

# School Health Update 2022

## School Health Update 2022

**Pennsylvania Department of Health  
Bureau of Community Health Systems  
Division of School Health**

# Division of School Health

- Chief of School Division
  - ▣ Colleen Schultz, M.Ed.,  
CSN RN
- School Health Consultants
  - ▣ Sheri Mountz, RN
  - ▣ Ed Woods, RN
- Bureau Administrative Support
  - ▣ Christine Weltmer,  
Administrative Officer 1

Professional Caregiver  
Invaluable  
Improves Attendance  
School Nurse  
Healthy Children Learn Better  
Caring Healer Kind  
Awesome Educated  
Emergency Disease Manager  
Listener Compassionate  
Wellness Assessment Skilled

# School Health Consultants

## Pennsylvania Department of Health Community Health Districts

**NC, NE and SW**

**Sheri Mountz**  
1-877-PAHEALTH  
[smountz@pa.gov](mailto:smountz@pa.gov)

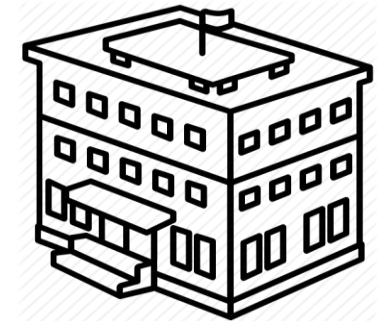
**SE, SC and NW**

**Ed Woods**  
1-877-PAHEALTH  
[edwoods@pa.gov](mailto:edwoods@pa.gov)



# PA School Snapshot

- 67 Counties
- 500 School Districts
- 164 Brick and Mortar/Regional Charter Schools
- 14 Cyber Charter Schools
- 29 Intermediate Units
- 3,000 PK-12 Private Schools



References:

[Pennsylvania Department of Education Non-Public/Private Schools](#)

[Pennsylvania Department of Education Types of Schools](#)

# CSN-RN-LPN Staffing



Credential	Full Time	Part Time	Total	# of Schools	Student Caseload(# of PK-12 Students)
CSN	2,101	123	2,224	3,897	1,869,149
RN	610	340	950		
LPN	590	139	729		
<b>Total</b>	<b>3,301</b>	<b>602</b>	<b>3,909</b>	<b>3,897</b>	<b>1,869,149</b>

\*Based on 2019-2020 SY SHARRS Data

# Staffing Snapshot – CSN

Health District	CSN Staff	Number of Schools	Number of Students
NC	<b>Total: 101</b> FT: 96 PT: 5	213	85,225
NE	<b>Total: 287</b> FT: 284 PT: 3	447	236,956
NW	<b>Total: 169</b> FT: 166 PT: 3	314	123,668
SC	<b>Total: 250</b> FT: 244 PT: 6	526	252,361
SE	<b>Total: 955</b> FT: 860 PT: 95	1,586	806,315
SW	<b>Total: 462</b> FT: 451 PT: 111011	811	364,624
<b>Total</b>	<b>2,224</b>	<b>3,897</b>	<b>1,869,149</b>

\*Based on 2019-2020 SY SHARRS Data

# Staffing Snapshot

## Supplemental Nursing Staff

Health District	RN	LPN	Number of Buildings Assigned
NC	<b>Total: 23</b> FT: 22 PT: 1	<b>Total: 77</b> FT: 73 PT: 4	163
NE	<b>Total: 107</b> FT: 61 PT: 46	<b>Total: 105</b> FT: 74 PT: 31	349
NW	<b>Total: 64</b> FT: 39 PT: 25	<b>Total: 69</b> FT: 58 PT: 11	177
SC	<b>Total: 111</b> FT: 101 PT: 10	<b>Total: 158</b> FT: 131 PT: 27	366
SE	<b>Total: 454</b> FT: 264 PT: 190	<b>Total: 228</b> FT: 75 PT: 17	959
SW	<b>Total: 191</b> FT: 123 PT: 68	<b>Total: 92</b> FT: 75 PT: 17	420
<b>Total</b>	<b>950</b>	<b>729</b>	<b>2,434</b>

# The Big Picture – School Health Staffing



Credential	Number of Buildings	Role
CSN	3,897	*carry caseload of students
RN/LPN	2,434	assist CSN with daily care of students; may assist with health screenings; function under licensure
Difference	1,463	CSN responsible for both daily care and case management



# Administrative Authority

- The Public School Code of 1949 (law)
- Section 1410. Employment of School Health Personnel.
  - Except as otherwise provided in this article, all school districts alone or jointly with other districts or joint school boards shall employ school physicians and school dentists but only with the approval of the Secretary of Health... and **shall employ one or more school nurses**...
- The Pa Code (regulation)
  - 23.31. Administration.
    - (b) *Duties of the administrative officer.* The administrative officer, through the board of school directors, shall arrange for the appointment of all health personnel including physicians, dentists, **nurses**, dental hygienists, medical and dental assistants, and medical technicians.

# Administrative Authority (cont.)

- In loco parentis
  - Public School Code, Section 1317 Authority of Teachers, Vice Principals and Principals over Pupils.
    - Every teacher, vice principal and principal in the public schools shall have the right to exercise the same authority as to conduct and behavior over the pupils attending his school, during the time they are in attendance, including the time required in going to and from their homes, as the parents, guardians or persons in parental relation to such pupils may exercise over them.
  - Does not provide parental authority for medication administration and other nursing functions.

# School Nurse Certification Programs

- **School Nurse Certification Programs**
  - ▣ Cedar Crest College
  - ▣ Eastern Mennonite University/Lancaster
  - ▣ Eastern University
  - ▣ Gannon University
  - ▣ La Roche College
  - ▣ La Salle University
  - ▣ Millersville University of PA
  - ▣ Slippery Rock University of PA
  - ▣ University of Pittsburgh/Johnstown
  - ▣ University of Pittsburgh/Pittsburgh Campus
  - ▣ West Chester University of PA

The Public School Code of 1949 (law)

- **§ 14-1401. Definitions**

(8) "**SCHOOL NURSE**" means a licensed registered nurse properly certificated by the Superintendent of Public Instruction as a school nurse who is employed by a school district or joint school board as a school nurse, or is employed in providing school nurse services to children of school age by a county health unit or a department or board of health of any municipality with which a school district or joint school board has contracted for school health services pursuant to the provisions of section 1411 of this act. ....

- **§ 14-1402. Health services**

(a.1) Every child of school age shall be provided with school nurse services: Provided, however, That the number of pupils under the care of each school nurse shall not exceed one thousand five hundred (1,500).

# CSN (cont.)

- The PA Code (regulation)
  - § 23.53 The school administrator, in determining the number of pupils to be served by a school nurse, shall consider the number of schools, distance between schools, travel difficulties, and special health needs of the area.
    - \*\*Multiple factors are to be used in making the assignment/caseload determination; acuity of students' health needs, travel distance, number of children to be served, etc.*
- Responsibility of nurse to determine appropriate level of care for students.
  - PDE- CSPG 95- Principal
    - A principal may supervise and direct nurses ... exclusive of directing health services controlled by the Nurse Practice Act.

# CSPG 80 School Nurse

- CSPG 80

<https://www.education.pa.gov/Educators/Certification/Staffing%20Guidelines/Pages/CSPG80.aspx>

- A person holding a valid PA certificate as a School Nurse is qualified to serve in elementary, middle or secondary levels as a school nurse/health services provider in grades PK-12.

## **Certification Assignment**

- An educator holding a valid PA certificate as a School Nurse is qualified to provide information and services in school health related areas; assess, document and manage the health care needs of children in grades PK-12, including those with disabilities; and to recognize symptoms and consequences of safety and environmental factors.

# CSN (cont.)

- Responsibilities:
  - Coordinate care
  - Develop plans of care
  - Participate in teams (ex. student assistance, IEP)
  - Communicate with parents
  - Perform duties exclusively connected with medical and dental school health activities (28 Pa. Code Chapter 23, Section 23.34)
    - The duties of school nurses shall be those assigned by the school district or joint school board which are **exclusively connected with medical and dental school health activities.** The technical content of the duties of the nurse shall be those prescribed by the Department of Health.

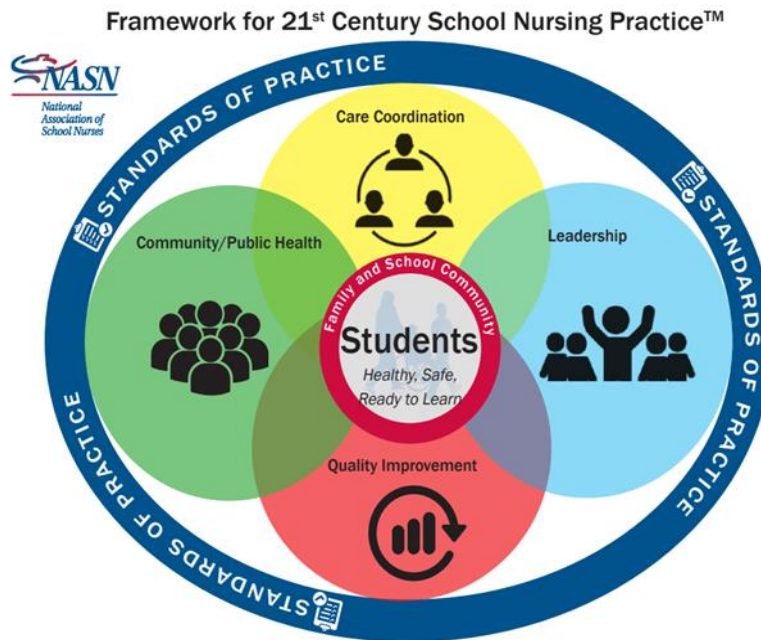
# CSN Duties

- The duties of the school nurse are listed at 28 Pa. Code §§ 23.71 to 23.79, and include:
  - Assisting in planning and organizing the school health program; maintaining health records of each child, advising pupils, teachers and parents about the procedures of the health examination;
  - Assisting in interpreting health needs of children to parents and teachers and assisting families to utilize community resources for improving the health of their children;
  - Providing information to school personnel on health issues and assisting in evaluation of the content of health curriculums; planning with school staff for a healthful environment with the school and planning for the needs of children with special health care needs;



# CSN Duties (cont.)

- Assisting the administrator in preparing the budget for the health program; coordinating the school health program with community programs and providers;
- Planning for first aid services and instructing personnel responsible for giving first aid.



# CSN Caseload

- CSN caseload
  - ▣ The CSN must go to all assigned buildings on a regular basis.
    - The school district is responsible for provision of school health services.
    - The amount of time necessary is based on assessment of student health needs as determined by the school nurse.
    - The CSN cannot cover a caseload they never see.
    - The CSN needs to be on duty and be available for verbal direction or provide on-site assistance to the supplemental staff nurses as needed.

# CSN Caseload (cont.)



- If a CSN is absent and a substitute is a supplemental licensed nurse covering the daily needs, the caseload of the absent CSN's assignment must be temporarily redistributed so the supplemental nurse has a CSN to report to and receive direction from.

# Supplemental Staff

- Supplemental staff:
  - ▣ May not carry a caseload
  - ▣ May not function as a substitute for a CSN
  - ▣ Function under their own license
  - ▣ Function under the direction of the CSN
  - ▣ Responsibilities:
    - Meet daily health care needs of students;
    - Follow written plans of care for assigned students;
    - Assist with completion of mandated screens and exams;
    - Consult with the student's assigned CSN on student health care issues; and
    - Function within their scope of practice.

# CSPG 101 Paraprofessional Staff

- **CSPG 101 Utilization of Paraprofessional Staff ...**

Paraprofessionals serving as health room aides cannot be directed to engage in health-related activities reserved exclusively for licensed professionals and controlled by the Nurse Practice Act, or other medically related laws...

# Working with Agency Nurses

- The CSN maintains the caseload at all times the student is under school jurisdiction.
- The agency staff functions as a supplemental staff under the guidance of the CSN.
- The agency must share with the school district the most current provider orders and nursing plans of care.
- School nurses should be included in care conferences and receive all updated information.

## ▶ Working with Agency Nurses (cont.)

- The school nurse should also receive copies of agency nurse notes to show care provided during school day (maintenance of comprehensive school health record).
- The school nurse should receive copies of the medication administration record (MAR). Meds administered by an agency should be counted in SHARRS.

## ▶ Working with Agency Nurses (cont.)

- Home Health Agencies function under HIPAA except when in a school setting, at which time they function under FERPA.
- Agencies must ensure the school is provided with all the appropriated parental consents, a daily report of the care provided and medication administered.



# School Health Website


<https://www.health.pa.gov/topics/school/Pages/School%20Health.aspx>

[Health](#) > [All Health Topics](#) > [School Health](#)

## School Health

The School Health Program is the oldest program of public health services in Pennsylvania, with responsibilities predating 1895. The program serves all children of school age attending public, private and non-public schools in Pennsylvania and is responsible for providing technical assistance, training and coordination of programs and services to schools, parents and the community at large regarding school health programs and services.

### Coronavirus Information

- [PA Department of Education - Responding to Cases](#)
- [PA Department of Health Coronavirus Resources](#)
- [CDC Guidance for Schools and Childcare](#) 
- [Back to School Toolkit](#)
- [K-12 Pooled Testing Guidance](#)
- [Answers to Frequently Asked Questions about the Secretary of Health's Masking Order](#)
- [COVID-19 Vaccine for Children and Teens: What to Know About Side Effects](#)
- [Five Key Questions for Assessing Children and Teens: Decision Tree for School Settings](#)

[SCHOOL HEALTH  
TOPICS A-Z](#)

[SCHOOL HEALTH  
UPDATES](#)

[SCHOOL HEALTH  
STATISTICS](#)

# School Health Website (cont.)

## School Health Topics A-Z

### A

[Abuse \(Adult and Child\)](#)  
[Access \(Pennsylvania School-Based Access Program\)](#)  
[Act 48](#)  
[Allergies/Epinephrine Administration](#)  
[Asthma](#)  
[Automated External Defibrillator \(AED\)/CPR Requirements for Schools](#)

### B

### C

[Certification and Licensure](#)  
[Communicable and Vaccine-Preventable Diseases](#)  
[Concussion Management](#)  
[Confidentiality/HIPAA/FERPA](#)  
[Continuing Education](#)  
[Coronavirus](#)

### D

[Delegation](#)  
[Dental Health Program](#)  
[Diabetes](#)  
[Dietary Accommodations](#)

### E

[Early Intervention](#)  
[E-cigarettes/Vaping](#)  
[Environmental Issues/Air Quality/Drinking Water/Bloodborne Pathogens/IPM/Pests \(Bed Bugs, Lice, Scabies\)](#)  
[Evaluation Rubric \(School Nurse and School Dental Hygienist\)](#)

### F

[Field Trips](#)  
[Flu](#)

### G

### H

[Homeless Students](#)

### I

[Immunizations](#)

### J

### K

### L

[Laws and Regulations](#)

### N

[Naloxone Program](#)

### O

### P

[Pennsylvania Statewide Immunization Information System \(PA-SIIS\)](#)  
[Plans of Care](#)  
[Pre-School](#)  
[Private and Non-Public School Health Services](#)  
[Pregnancy](#)

### Q

### R

### S

[School Health Consultant Contacts](#)  
[School Health Inquiry Directory](#)  
[SHARRS](#)  
[Special Health Care Needs](#)  
[Statistics](#)  
[Sudden Cardiac Arrest](#)

### T

[Tobacco](#)

# School Health Website (cont.)

[Health](#) > [All Health Topics](#) > [School Health](#) > [Updates](#)

## School Health Updates

### Emailed Updates

- [2022 School Health Update February 2022](#)
- [2021 School Health Update October 2021](#)
- [2021 School Health Update January 2021](#)
- [2020 School Health Update March 2020](#)
- [2019 School Health Update December 2019](#)
- [2019 School Health Update August 2019](#)
- [2019 School Health Update May 2019](#)
- [2019 School Health Update February 2019](#)
- [2018 School Health Update August 2018](#)
- [2018 School Health Update March 2018](#)
- [2018 School Health Update January 2018](#)
- [2017-18 School Health Update Oct 2017](#)

### PowerPoint Presentations

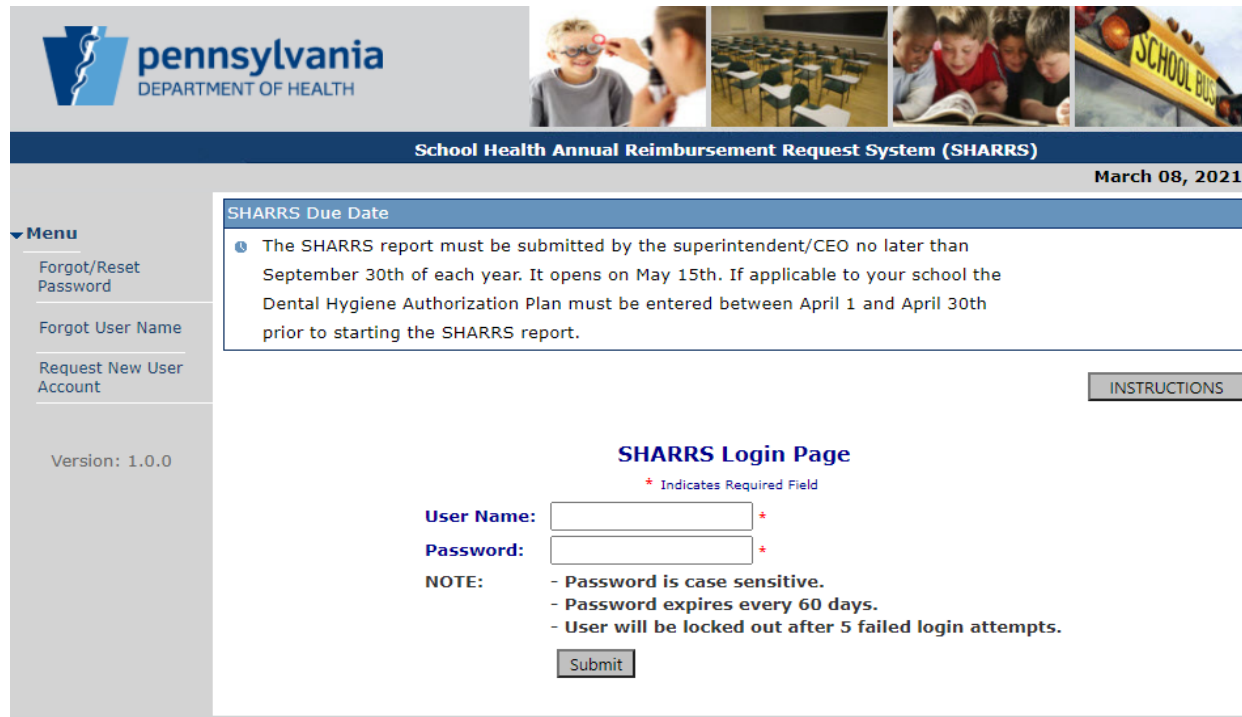
- [2020-2021 School Health Update](#)
- [2018-2019 School Health Update](#)
- [2018 School Health Update April 2018](#)
- [2017 School Health Update](#)

# SHARRS

## School Health Annual Reimbursement Request System (SHARRS)

SHARRS can be accessed at the following link:

<https://apps.health.pa.gov/sharrs>



**pennsylvania**  
DEPARTMENT OF HEALTH

School Health Annual Reimbursement Request System (SHARRS) March 08, 2021

**SHARRS Due Date**

The SHARRS report must be submitted by the superintendent/CEO no later than September 30th of each year. It opens on May 15th. If applicable to your school the Dental Hygiene Authorization Plan must be entered between April 1 and April 30th prior to starting the SHARRS report.

**SHARRS Login Page**

\* Indicates Required Field

**User Name:**  \*

**Password:**  \*

**NOTE:**

- Password is case sensitive.
- Password expires every 60 days.
- User will be locked out after 5 failed login attempts.

Version: 1.0.0

# SHARRS (cont.)

SHARRS September 30 due date is required by the Public School Code of 1949:

- Section 2505.1. Reimbursement for Health Services. “...(b) ...Reimbursement on account of health services rendered by a school district or joint school board may be withheld by the Secretary of Health unless the actual expenditures for the health services are certified to the Secretary of Health within three months after the end of the school year...” (the school year officially ends June 30 per the Department of Education).

# SHARRS (cont.)

- Chronic Conditions Count: The Chronic Conditions count is to be taken March 15-30. These are reported on the school's annual SHARRS report.
- The SHARRS instruction manual provides further guidance on collecting this data.

# SHARRS (cont.)

- A School Dentist is still required for a school with an approved Dental Hygiene Services Program (DHSP).
- The School Dentist must review and approve the Dental Hygiene Authorization Plan.
- The Dental Hygiene Authorization Plan must be closed before the SHARRS system can be opened for data entry in order for the system to process reports correctly.

**Note:** Only the Superintendent/CEO may submit the SHARRS report. Any user may submit the Dental Hygiene Authorization Plan.

# SHARRS (cont.)

- For a DHSP, schools must:
  - Have a Dept. of Education certified dental hygienist hired.
  - Have an authorization plan, developed and approved by the school dentist and administration, submitted to and approved by the Division of School Health between April 1<sup>st</sup> and April 30<sup>th</sup>.



# SHARRS (cont.)

- An “Instructions” button is located in the top right corner of every page.
  - ▣ Provides detailed guidance on how to complete the report, manage user accounts and determine what data must be included.
  - ▣ Button will direct the user to the section of the instructions that correlates to the page the user is on.

# SHARRS (cont.)

- **CSN Days Per Cycle in Building or OTHER Cycle**
  - Days per Cycle reflect the number of days in the School's cycle the school nurse is assigned to each specific building under their caseload.
  - Formula to calculate days per cycle: Number of hours spent in a building per cycle divided ( $\div$ ) by the number of hours in a work week multiplied ( $\times$ ) by the days in the cycle equals ( $=$ ) days per cycle. (the sum of hours for all buildings needs to equal the week's work hours)
  - Example of a 6 day cycle, 30 hour work week, covering 3 buildings:
    - Bldg 1: 5 hours per cycle  $\div$  30 hour work week  $\times$  6 day cycle = 1 out of 6
    - Bldg 2: 17 hours per cycle  $\div$  30 hour work week  $\times$  6 day cycle = 3.4 out of 6
    - Bldg 3: 8 hours per cycle  $\div$  30 hour work week  $\times$  6 day cycle = 1.6 out of 6

# SHARRS (cont.)

- **OTHER Cycle**

- ▣ Is checked when the number of hours or days the CSN is scheduled to be present at a specific building is outside of the school's standard "Cycle" schedule, such as two hours every other week, one day per month, or when the cycle varies from week to week.
- ▣ A **description** of the "OTHER Cycle" is required in the comment box.
  - **The term "PRN" or "As Needed" is not an acceptable description.**

# SHARRS (cont.)

- If a CSN retires, etc. and is replaced by another CSN prior to the end of the school year - only count who finished the year but include all expenses.
- If both are included on the report then it alters the caseload report.

# SHARRS (cont.)

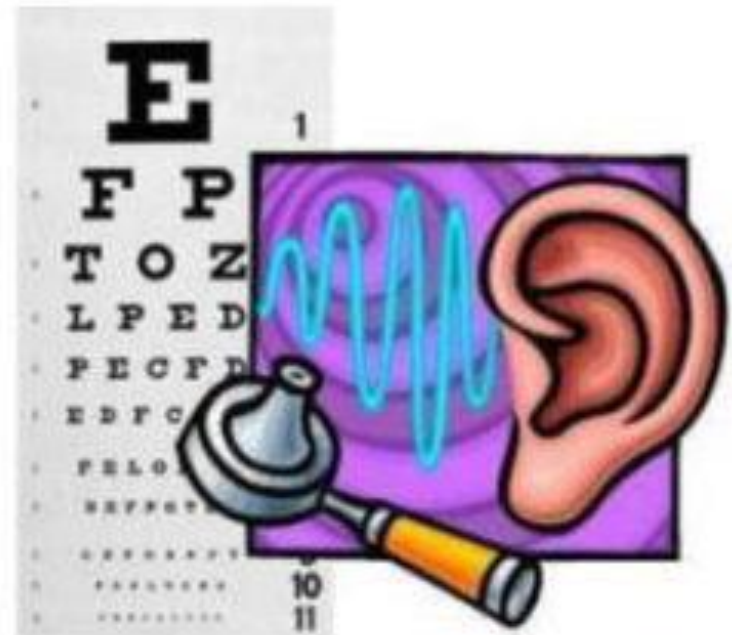
- SHARRS data is used for statistical reporting and research and should be accurate.
  - ▣ Ungraded special education has been removed from the ADM field, as directed by PDE.
  - ▣ Grade should be entered as defined in the student's IEP.
- A CSN should review the report prior to submission to ensure healthcare data is accurate, as data entry errors delay the processing of the SHARRS report.

# SHARRS (cont.)

- For the 21-22 SHARRS report:  
If screenings/exams are not completed/incomplete due to COVID-19, ensure that the data entry person places the following verbiage in the "Comment" box on the "ADM page":
  - *"Health screens and exams not completed/incomplete due to COVID-19."*
  - This will aid in expediting the processing of the report.

# Screenings and Exams

- Written into law and regulation.
- Required for ALL students in the mandated grades.
- Prioritize starting with the most vulnerable and those with known problems.
- Encourage parents to have exams done by student's PCP/Dentist.



# Act 122: Vision Screening

- Act 122 of 2020 Highlights:
  - Prior to admission for first time, documentation from PCP or screener with specific training in vision screening techniques and protocols, that the child has passed or failed a vision screening.
  - Vision screen to be done every school year, until the child completes fifth grade, and at least every two years thereafter until the child graduates from twelfth grade.
  - Vision screen to be performed by school health personnel or screeners with specific training in vision screening techniques and protocols.



# ▶ Act 122: Vision Screening (cont.)

- Act 122 of 2020 Highlights:
  - New vision screening guidelines will go into effect **after** regulations are promulgated. Additional info will be provided once the regs are promulgated.
  - The Advisory Health Board shall promulgate regulations to establish vision screening standards based on instrument based vision screening technologies or visual acuity testing, taking into consideration national guidelines from the American Academy of Pediatrics AND AMERICAN ASSOCIATION FOR PEDIATRIC OPHTHALMOLOGY AND STRABISMUS.
- **The regulations shall apply to school years beginning after the regulations are promulgated by the Advisory Health Board.**

# Welch Spot Screener

- Our guidance remains that schools may use devices to assist in their screening efforts, as long as the devices conform to our requirements.
- Welch Allyn SPOT screener is not appropriate for children over the age of 5 if child is able to read. It does not perform visual acuity and their acuity conversion chart is no longer recommended by their company.

# Mandated Health Services Grid

Date of Issue September 2017

## Provision of School Health Services and Mandated School Health Services

School entities are to provide the following health services for students who attend or who should attend an elementary, grade or high school, either public or private, and children who are attending a kindergarten which is an integral part of a local school district. These requirements also apply to students who are home schooled.

Mandated School Health Services

SERVICE	K	1	2	3	4	5	6	7	8	9	10	11	12	Notes
School Nurse Services	X	X	X	X	X	X	X	X	X	X	X	X	X	
Maintenance of Health Record	X	X	X	X	X	X	X	X	X	X	X	X	X	
Immunization Assessment	X	X	X	X	X	X	X	X	X	X	X	X	X	
Medical Examination	*	*					X					X		*Required on original entry- K or 1st grade
Dental Examination	*	*		X				X						*Required on original entry- K or 1st grade
Growth Screen	X	X	X	X	X	X	X	X	X	X	X	X	X	
Hearing Screen	X	X	X	X				X				X		
Scoliosis Screen							X	X						6th grade physical may be used in lieu of 6th grade screen
Tuberculin Test	*	*								X				*Required on original entry- K or 1st grade. Unless approved to discontinue
Vision Screen-Far Visual Acuity Test	X	X	X	X	X	X	X	X	X	X	X	X	X	
Vision Screen-Near Visual Acuity Test	X	X	X	X	X	X	X	X	X	X	X	X	X	
Vision Screen-Convex Lens Test (Plus Lens)		X												1st grade students meeting criteria & new students (any grade) not previously screened
Vision Screen-Color Vision Test		*	*											*1st or 2nd grade & new students (any grade) not previously screened
Vision Screen-Stereo/Depth Perception Test		*	*											*1st or 2nd grade & new students (any grade) not previously screened

# Suspected Child Abuse & Neglect (SCAN)

- ▀ Free live training for school nurses.
- ▀ Developed by the PA Academy of Pediatrics.
  - Presented by a Physician and a local Children & Youth worker.
  - Approved for three credits (Act 48/58) that satisfy Act 126 and Act 31 requirements.
  - Go to [www.pascan.org](http://www.pascan.org) to submit your presentation request.
  - Contact Teresa Olsen, Program Director at the PA Chapter, American Academy of Pediatrics at [tolsen@paaap.org](mailto:tolsen@paaap.org) with questions.

# Medical Marijuana

- **All questions** regarding **medical** marijuana refer to:
  - ▣ [RA-DHMedMarijuana@pa.gov](mailto:RA-DHMedMarijuana@pa.gov)
  - ▣ Medical marijuana webpage  
<https://www.health.pa.gov/topics/programs/Medical%20Marijuana/Pages/Medical%20Marijuana.aspx>
  - ▣ Guidance for schools  
<https://www.health.pa.gov/topics/programs/Medical%20Marijuana/Pages/School.aspx>

# CBD

- Local school decision whether to allow CBD in school setting. Division of School Health cannot give any guidance on this issue.
- If the decision is to allow CBD, then a policy should be developed in consultation with the district solicitor and administration.
- FDA regulation of Cannabis derived products including CBD.

<https://www.fda.gov/news-events/public-health-focus/fda-regulation-cannabis-and-cannabis-derived-products-including-cannabidiol-cbd#approved>

# Private/Non-Public Services

- **Provision of School Health Services to Private/Non-Public Schools**
  - School Nurse Act, Act 707 of 1962
    - Equal health services are required for public and non-public schools.
    - Neither the law nor regulation distinguish differences in the level of service to public vs. non-public schools.
  - Pa. Public School Code, § 14-1401 and 14-1402
    - (1) "Children of school age" ...means every child attending or who should attend an elementary grade or high school, either public or private, within the Commonwealth.
    - Section 1402(a.1) requires that "every child of school age shall be provided with school nurse services ..."

# Private/Non-Public Services (cont.)

- Private, parochial and non-public school entities may request school health services from the public school district within its geographical boundaries.
  - DOH Division of School Health recommends the administrators of the two school entities come to an agreement on the services to be provided, through a written memorandum of understanding (MOU).
  - 28 Pa. Code § 23.52 states that the **school nurse services shall be provided through the public school system** and the administration of this service shall be the responsibility of the public school administrator in consultation, as needed, with the private or parochial school administrator.



# Private/Non-Public Services (cont.)

- Provision of School Health Services to Private/Non-Public Schools.
  - 28 Pa. Code § 23.1 states school districts are required to provide specified health services for children of school age who attend an elementary, grade or high school, either public or private.
  - 28 Pa. Code § 23.51 states that a child in private, parochial and public schools shall be provided with school nurse services in the school which the child attends.

<https://www.health.pa.gov/topics/school/Pages/Private%20School%20Services.aspx>

# Private/Non-Public Services (cont.)

- 28 Pa. Code § 23.74
  - A function of the school nurse is to interpret the health needs of individual children. Includes assessment of student health care needs, development of appropriate plans of care, medication administration, first aid and emergency care, **etc.**
- Certified school nurses must rotate to **every** assigned building. Amount of time necessary is based on assessment of student health needs as determined by the school nurse.

# Medication Administration

- CSN may identify unlicensed school staff to administer the following medications:
  - ▣ Asthma rescue inhalers;
  - ▣ Epinephrine auto-injectors;
  - ▣ Glucagon (if the district opts into Act 86);
  - ▣ Insulin (if the district opts into Act 86); and
  - ▣ Naloxone (Narcan).

# ▶ Medication Administration (cont.)

- If self-administration or unlicensed staff are permitted, it requires at a minimum:
  - ▾ School policies and procedures;
  - ▾ Provider order and permission; and
  - ▾ Parent/guardian permission.
- CSN determines staff designation based on a student's health needs:
  - ▾ CSN assures staff training is completed.
  - ▾ CSN assesses staff/student annual competency.
  - ▾ CSN assures student acknowledgement.

# Medical Orders

- Prescribed orders are good for one year.
  - Renew orders at the start of each school year.
  - School year officially begins July 1 per the Department of Education.
  - OTC/CAM medications require an order.
- Parent/guardian provides orders from the student's licensed prescriber for all medications and treatments.
  - Parent/guardian provides all medications and treatment equipment/supplies for use in school.
- Parent/guardian without prescriptive authority may not direct medical care and treatments.

# Medical Orders (cont.)

- Standing orders must have school physician approval for use in the following cases:
  - Non-licensed staff giving emergency medications like rescue inhalers, epinephrine auto-injectors, and naloxone.
  - District licensed nurses providing care at non-public/private schools.
  - District licensed volunteers providing care.
  - Supplemental nurses at CTCs using district standing orders.

# Medical Orders (cont.)



- Schools may minimize use of medications under standing orders for various factors, including cost, expiration date, etc.
- Standing orders are null and void if the district loses its school physician, necessitating individual orders.

# Medical Orders (cont.)

- Refer to the medication manual for further guidance.
  - <https://www.health.pa.gov/topics/school/Pages/Medications.aspx>
- Orders must contain student name; signature and phone number of licensed prescriber; name and dosage of medication; frequency; route and time of administration; effective start and end dates; and specific directions if needed.
  - Orders may not state, “per package or parental instructions.”



# Bloodborne Pathogens

- Bloodborne Pathogen (BBP) information for schools can be found on the school health Environmental Issues web page
  - ▀ <https://www.health.pa.gov/topics/school/Pages/Environmental.aspx> this page has been updated with the following information on BBP
    - <https://www.cdc.gov/niosh/docs/2004-101/default.html> (Safety Checklist Program for Schools)
    - <https://www.cdc.gov/niosh/topics/bbp/occupations.html>

# School Jurisdiction

- School jurisdiction
  - ▣ Public School Code, Section 510

School board may adopt rules during time students are under supervision of school, including time spent in coming to and returning from school.
  - ▣ 22 Pa. Code, Section 15.1

Equal opportunity to participate in the school program and extracurricular activities.

# School Jurisdiction (cont.)

- ▣ Schools are required to provide nursing services to students any time they are under school jurisdiction
- ▣ School jurisdiction includes:
  - Trips to and from school while in school furnished transportation.
  - Class time (including lunch, recess, physical education).
  - School sponsored extracurricular activities, field trips and camps.
  - **Non PIAA** sports/athletic activities (such as intramural activities).

# School Jurisdiction (cont.)

- U.S. Department of Education Office for Civil Rights
  - <https://www2.ed.gov/about/offices/list/ocr/index.html>

“OCR’s mission is to ensure equal access to education and to promote educational excellence through vigorous enforcement of civil rights in our nation’s schools”.
  - <https://www2.ed.gov/about/offices/list/ocr/faqs.html?src=go>

Frequently Asked Questions on OCR's work, including information related to our areas of enforcement and the Civil Rights Data Collection.

# School Jurisdiction (cont.)

- ▀ <http://www2.ed.gov/about/offices/list/ocr/letters/colleague-201301-504.html>

## III. Ensure Equal Opportunity for Participation

“A school district that offers extracurricular athletics must do so in such manner as is necessary to afford qualified students with disabilities an equal opportunity for participation. This means making reasonable modifications and providing those aids and services that are necessary to ensure an equal opportunity to participate, unless the school district can show that doing so would be a fundamental alteration to its program”.

# Pre-K And K

- School Districts do not have to provide services to private-nonpublic K and/or pre-K students if those grades are not offered in the public school.
  - Schools do have to provide services if the K or pre-K is an “integral” part of the school district.
  - Integral means that the pre-K is operated by the public school entity, not just renting space in the school building.
  - School administrators may have an agreement to provide those services; it then becomes a contractual issue between the nurses and administrators.
  - Schools may not receive reimbursement via SHARRS for “Pre-K Counts” students or any preschool program that receives funding from any other source.

# Child Care Centers

- **Chapter 3270: Child care centers are regulated by the Department of Human Services**

- ▣ <https://www.pacode.com/secure/data/055/chapter3270/chap3270toc.html>

- 3270.131. [Health assessment.](#)
- 3270.131a. [\[Reserved\].](#)
- 3270.132. [Emergency medical care.](#)
- 3270.133. [Child medication and special diets.](#)
- 3270.134. [Child hygiene.](#)
- 3270.135. [Diapering requirements.](#)
- 3270.136. [Reporting diseases.](#)
- 3270.137. [Children with symptoms of disease.](#)
- 3270.138. [Discrimination based on illness.](#)

# Sharing Health Information

- Sharing health information
  - ▣ 49 Pa. Code § 21.18 Nurse Practice Act
    - Covers standards of nursing conduct, requirement for registered nurses to safeguard patients' dignity, right to privacy and the confidentiality of patient information.
    - Records that are transferred to a student's new school are to be maintained by the new school.
    - Records entered into an electronic database must be secure from unauthorized personnel access to a student's health information.

Records should never be sent back to the student's previous school, as that school no longer has a right to the student's health information.



# Sharing Health Information (cont.)

- Sharing health information
  - ▣ Pa. Public School Code, § 14-1409

All health records ... shall be confidential, and their contents shall be divulged only when necessary for the health of the child or at the request of the parent or guardian to a physician ...
  - ▣ 28 Pa. Code § 23.55

Health records shall be maintained for each child ... kept in the school building where the child attends ... available to the school nurse at all times ... shall be transferred with the child when he moves from one school to another or from one district to another.
  - ▣ Personally identifiable information should not be submitted to the Division of School Health.

# FERPA HIPAA

- Family Educational Rights and Privacy Act
  - Health records maintained by a school district that receives funds under any program administered by the U.S. Department of Education are “education records” subject to the Family Educational Rights and Privacy Act (FERPA).
  - FERPA allows schools to disclose a student’s health and medical information to teachers and other school officials, without written consent, if these school officials have “legitimate educational interests” in accordance with school policy.

# FERPA HIPAA (cont.)

- Family Educational Rights and Privacy Act
  - ▼ The school district must issue annual notice of rights under FERPA to parents and to students over age 18, which includes information regarding criteria used by the school for determining which school staff members have been designated as “school officials” and what is “legitimate educational interest” for staff access to education records.
  - ▼ <https://www2.ed.gov/policy/gen/guid/fpco/faq.html>
    - [FERPA@ed.gov](mailto:FERPA@ed.gov)
  - ▼ <https://www.hhs.gov/hipaa/for-professionals/index.html>
  - ▼ <http://www.dhs.pa.gov/yourprivacyrightshipaa/index.htm>

# FERPA HIPAA (cont.)

- Health Insurance Portability and Accountability Act (HIPAA)

School nurses may communicate concerns about medical orders or share related health issues or information that may be relevant to the treatment regimen with the physician.

- HIPAA allows the school nurse and physician to communicate verbally with each other without written authorization of the parent if it is for treatment purposes.

This does not apply to requests for release of health records.

- State licensure statutes and professional standards of practice for nurses and physicians require nurses to question/clarify medical orders, when indicated, before carrying them out, regardless of the healthcare setting. They also require physicians to provide nurses with sufficient information for safe execution of the treatment plan.

# Seizure

- The following medications must be administered by licensed medical professional:
  - ▣ Diastat and Versed
- The Only meds that an unlicensed staff can administer are:
- Epi auto-injectors, Narcan/Naloxone, Asthma inhalers, and Diabetes meds per Act 86.

# Seizure Training

- [HB 416](#) goes into effect for the 2022-2023 school year.
  - DOH, in consultation with Dept of Education, is to identify and approve an online course by June 30, 2022.
  - The training is for school nurses and staff that have direct contact with students.
  - The training is not mandatory, and it does not permit unlicensed staff to administer meds.

# Epinephrine Training School Staff

- Food Allergy Research & Education (F.A.R.E.) has updated the training module for school staff.
  - The new link *F.A.R.E Recognizing and Responding to Anaphylaxis* may be found on the School Health website
  - Individuals must register for the Food Allergy Academy and select the correct course module.

<https://www.health.pa.gov/topics/school/Pages/Epinephrine-Training.aspx>

# Epinephrine Training School Staff (cont.)



## Recognizing & Responding to Anaphylaxis

Anaphylaxis (pronounced an-uh-FIH-LAX-iss) is a severe, potentially life-threatening allergic reaction. Symptoms can affect several areas of the body, including breathing and blood circulation.

Food allergy is the most common cause of anaphylaxis, although several other allergens—such as insect stings, medications or latex—can be potential triggers. Rarely, anaphylaxis is caused by exercise. Another uncommon form can occur when a person exercises soon after eating a problem food.

The link leads to the initial registration page

## Register Now

This course is now available through the Food Allergy Academy, FARE's new learning management system. Click here for the registration page for the Food Allergy Academy platform, and then once you have registered you can search for the training course or content you are looking for.

REGISTER NOW →



Clicking on "Register Now" will bring up the following screen

### Log In

To log in, please enter your username and password.

User Name:

Password:

[Forgot password?](#)



**FARE**  
Food Allergy Academy

Food Allergy Academy

Welcome to FARE's Food Allergy Academy! The Food Allergy Academy provides access to training and resources that help make the world a safer and more inclusive place for those managing food allergies.

[Register for Account](#)



**pennsylvania**  
DEPARTMENT OF HEALTH



# Diabetes

- **Continuous Glucose Monitoring (CGM)**
  - It is not the nurse's responsibility to monitor a student's glucose level continuously
  - The monitoring frequency during school hours should be ordered by the student's provider not by the parent
  - Confirm out of range levels via a manual blood sampling in case the monitor is malfunctioning
- **Diabetes Manual/PPT has been updated to include training on glucagon nasal spray and pre-filled auto injector**

# ADMINISTRATION OF DIABETES MEDICATIONS

The following slides are meant to provide instruction on administering several forms of glucagon and insulin.

\*Please note: There are various treatments for hypoglycemia, hyperglycemia and other diabetic emergencies. The Pennsylvania Department of Health does not recommend the use of one treatment or medication delivery method over another.

# ADMINISTRATION OF DIABETES MEDICATIONS

- Glucagon
  - Administer for treatment of severe hypoglycemia (low blood sugar) as outlined in student's DMMP and ECP
  - Delivery Methods
    - Intramuscular (IM)
    - Nasal Spray
    - Pre-filled syringe/auto-injector
  - Activate 9-1-1
  - May cause nausea and vomiting when student regains consciousness

# ADMINISTRATION OF DIABETES MEDICATIONS

## American Diabetes Association Safe at Schools Campaign

- ▀ Glucagon Delivery – Intramuscular

<https://www.youtube.com/watch?v=OC-dcDgmXuI&index=7&list=PL3DE9DDE8EB2A2E56>

- ▀ Glucagon Delivery by Nasal Spray

[https://www.baqsimi.ca/en/got-your-baq#instructions\\_for\\_use\\_video](https://www.baqsimi.ca/en/got-your-baq#instructions_for_use_video)

- ▀ Glucagon Delivery by Pre-filled Syringe/Auto-Injector

<https://youtu.be/9RxvgQjFwl4>

# Nebulizers

- During this COVID-19 pandemic, asthma treatments using inhalers with spacers (with or without face mask, according to each student's individualized treatment plan) are preferred over nebulizer treatments whenever possible. Based on limited data, use of asthma inhalers (with or without spacers or face masks) is not considered an aerosol-generating procedure.

# Field Trips

- Students on field trips are entitled to the same health services, including medication administration, to which they are entitled while attending school. The school may ask a parent to accompany their student on a field trip to provide the necessary care, but it cannot require the parent to do so.
- Please see Field Trip Considerations:
  - <https://www.health.pa.gov/topics/Documents/School%20Health/Field%20Trip%20Considerations%20updated%20April%202018.pdf>

# Coronavirus Resources PA-HAN

## PA Health Alert Network (PA-HAN)

PA-HAN

<https://www.health.pa.gov/topics/prep/PA-HAN/Pages/HAN.aspx>

- [Sign up](#) for the Pennsylvania Health Alert Network (PA HAN).
- The Health Alert Network is part of the Pennsylvania Department of Health's Public Health Emergency Preparedness and Response Program and was established under a cooperative agreement with the U.S. Centers for Disease Control and Prevention (CDC).

# COVID-19 Testing in Schools

DOH's COVID-19 school testing program is operational:

Testing Program Letter to Schools

<https://www.education.pa.gov/Documents/K-12/Safe%20Schools/COVID/LetterSchoolsGinkgo.pdf>

Statement of Assurances

<https://www.education.pa.gov/Documents/K-12/Safe%20Schools/COVID/StatementofAssurances.pdf>



# Home-Self Test

- Definition of “at-home testing”: The patient obtains a COVID test kit and collects the specimen and performs the test themselves. The results of at-home test kits purchased over the counter (without a prescription) and/or done without the assistance of a proctor will generally NOT appear in PA-NEDSS.

<https://www.cdc.gov/coronavirus/2019-ncov/testing/self-testing.html>

- Are at-home COVID antigen tests approved by the FDA?  
Several at-home tests have received an FDA EUA. As long as they are used according to the FDA EUA requirements, the results are considered valid.

[In Vitro Diagnostics EUAs - Antigen Diagnostic Tests for SARS-CoV-2 | FDA](#)

The acceptance of home tests is at the school’s discretion. The tests should be FDA approved.

# Promoting Vaccination

- Vaccination is currently the leading public health prevention strategy to end the COVID-19 pandemic.
- Vaccines are safe and effective and the best way to protect you and those around you from serious illnesses.
- **All Pennsylvanians aged 5 and older are eligible to receive a COVID-19 vaccine.**



# Promoting Vaccination (cont.)

## COVID 19 Resources

- [PA School Health](#)
  - [COVID-19 Vaccine for Children and Teens: What to Know About Side Effects](#)
  - [Five Key Questions for Assessing Children and Teens: Decision Tree for School Settings](#)
- [PA DOH COVID Vaccines](#)
- [CDC - How Schools Can Support COVID-19 Vaccination](#)
- [CDC – Building Confidence in COVID-19 Vaccines](#)
- [CDC COVID -19 Vaccine Toolkit](#)
- [CDC COVID-19 Vaccine Myths and Facts](#)

# Coronavirus Website Resources

- CDC Covid-19-  
<https://www.cdc.gov/coronavirus/2019-ncov/index.html>
- CDC Covid-19 K-12-  
[School Settings | COVID-19 | CDC](#)
- PA School Health  
<https://www.health.pa.gov/topics/school/Pages/School%20Health.aspx>
- PA Dept of Health -  
<https://www.health.pa.gov/Pages/default.aspx>
- PDE Resources for School Communities  
<https://www.education.pa.gov/Schools/safeschools/emergencyplanning/COVID-19/Pages/default.aspx>
- PDE responding to case(s) in school-  
<https://www.education.pa.gov/Schools/safeschools/emergencyplanning/COVID-19/SchoolReopeningGuidance/ReopeningPreKto12/RespondingtoCases/Pages/default.aspx>

# Communications

- Advice on legal, personnel or policy development may not be provided by the Division of School Health.
- Utilize available tools such as the Division of School Health's website to research topics.
  - ▣ <https://www.health.pa.gov/topics/school/Pages/School%20Health.aspx>
    - The School Health updates (emails and PowerPoints) are posted on the school health website and contain valuable information.
    - These updates are excellent training tools for both healthcare and administrative staff. Please share accordingly.
- Contact the appropriate licensing/ enforcement entities (Immunizations, Education, Board of Nursing, Department of Human Services, etc.)

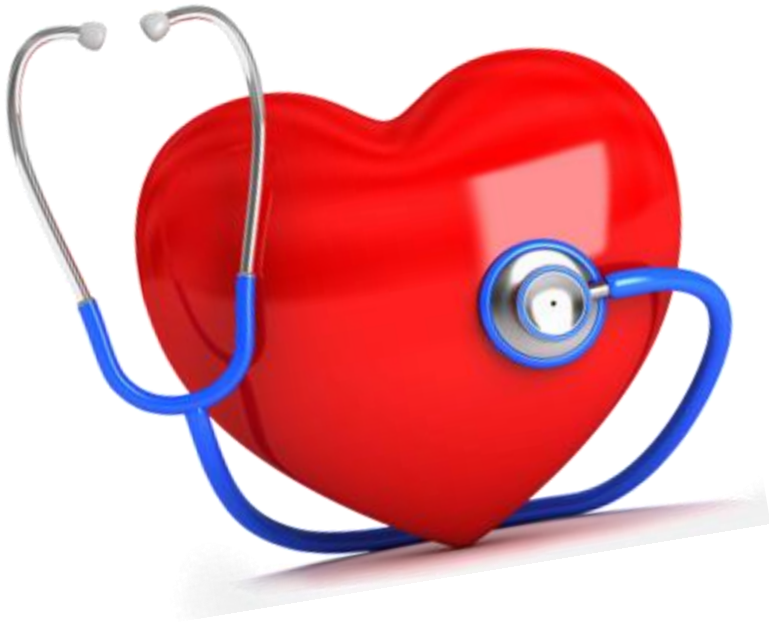
# Communications (cont.)

- Pa Department of Education
  - <https://www.education.pa.gov/Pages/default.aspx>
- Pa Department of Human Services
  - <https://www.compass.state.pa.us/compass.web/Public/CMPHome>
- Pa State Board of Nursing
  - <https://www.dos.pa.gov/ProfessionalLicensing/BoardsCommissions/Nursing/Pages/default.aspx>
- Office of Child Development & Early Learning
  - <https://www.education.pa.gov/Early%20Learning/Pages/default.aspx>

# Immunizations and Communicable Diseases

- Immunization questions should be directed to your local State Health Center/District Immunization Nurse Consultant, or your local Health Department. If they are not able to assist you, contact the Division of Immunizations at 717-787-5681.
  - For information on the school immunization requirements select the link below.  
<https://www.health.pa.gov/topics/programs/immunizations/Pages/School.aspx>
- Report suspected cases and questions related to communicable diseases and vaccine preventable diseases to your local state health center or the local county or municipal health department.
  - <https://www.health.pa.gov/About/Pages/State%20Health%20Centers.aspx>

# Thank You



A Heartfelt Thanks for all you do for Pennsylvania K-12 students, staff and families.