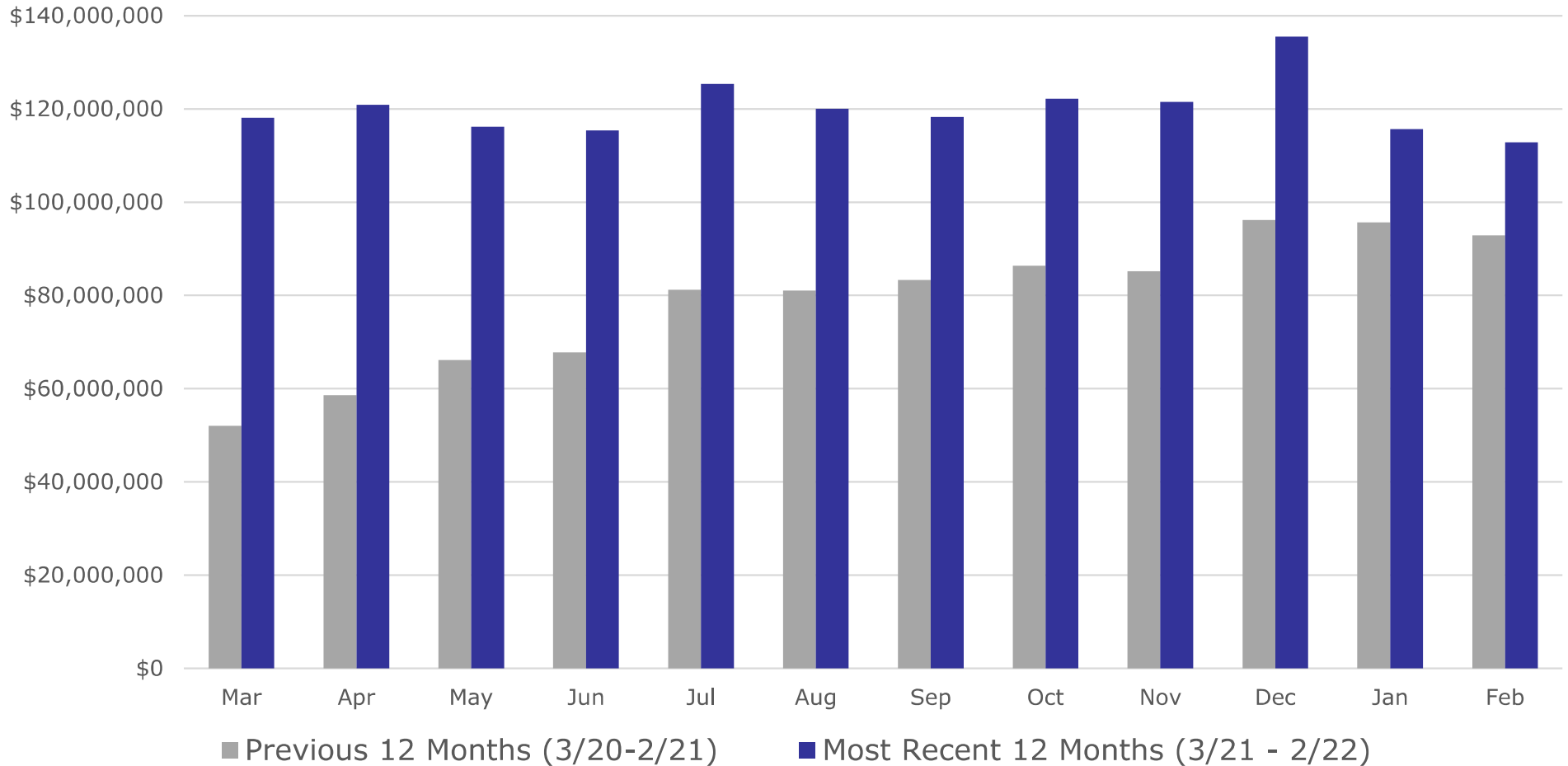


Medical Marijuana Program Update

- Program to date:
 - 740,757 Patients and Caregivers Registered;
 - 406,454 Active Patient Certifications;
 - 1,779 Approved Practitioners;
 - 20.0 Million Patient Dispensing Events;
 - 56.8 Million Products Dispensed;
 - \$4.8 Billion in Total Sales;
 - \$1.9 Billion by G/Ps to Dispensaries; and
 - \$2.9 Billion by Dispensaries.

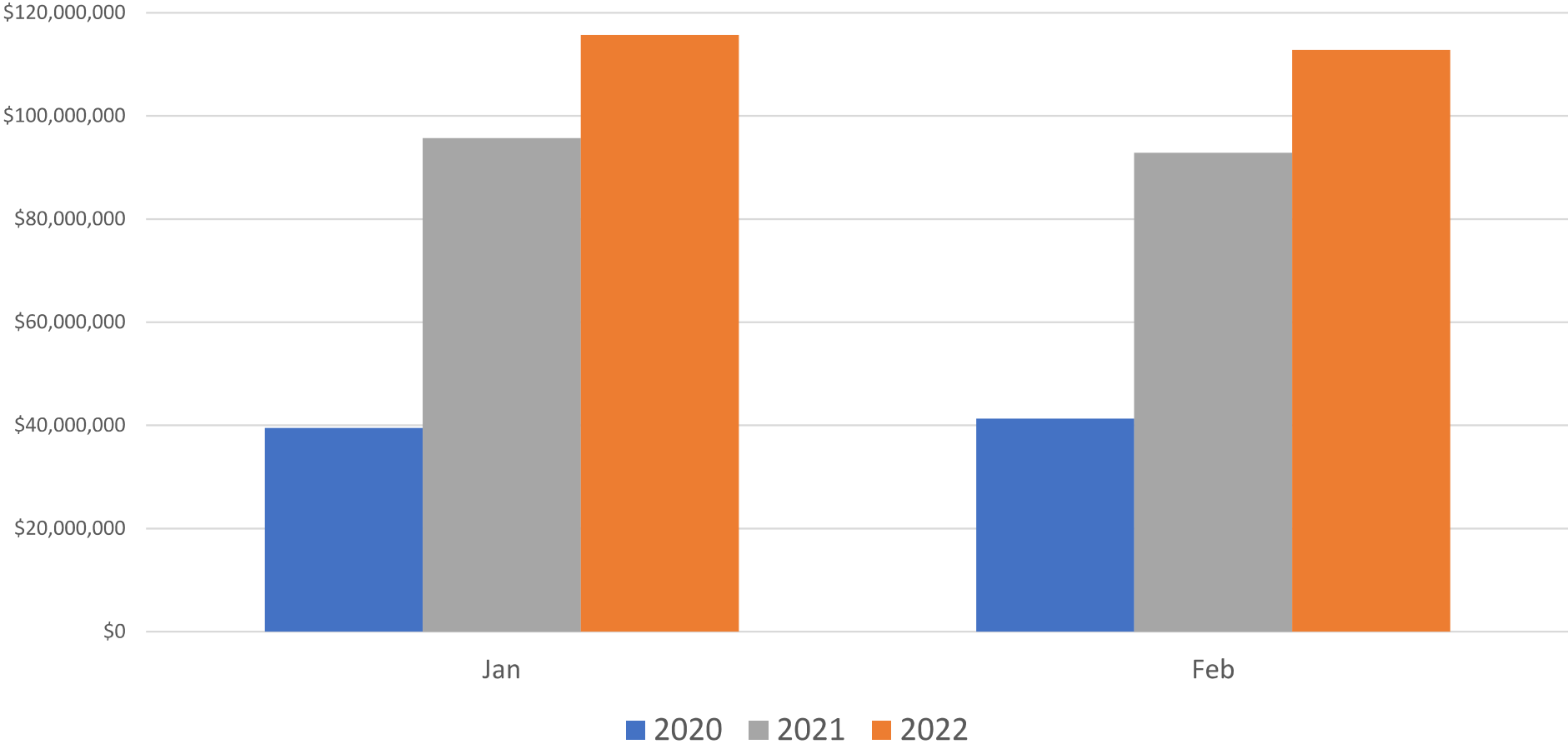
Medical Marijuana Program Update

Month on Month Dispensary Sales



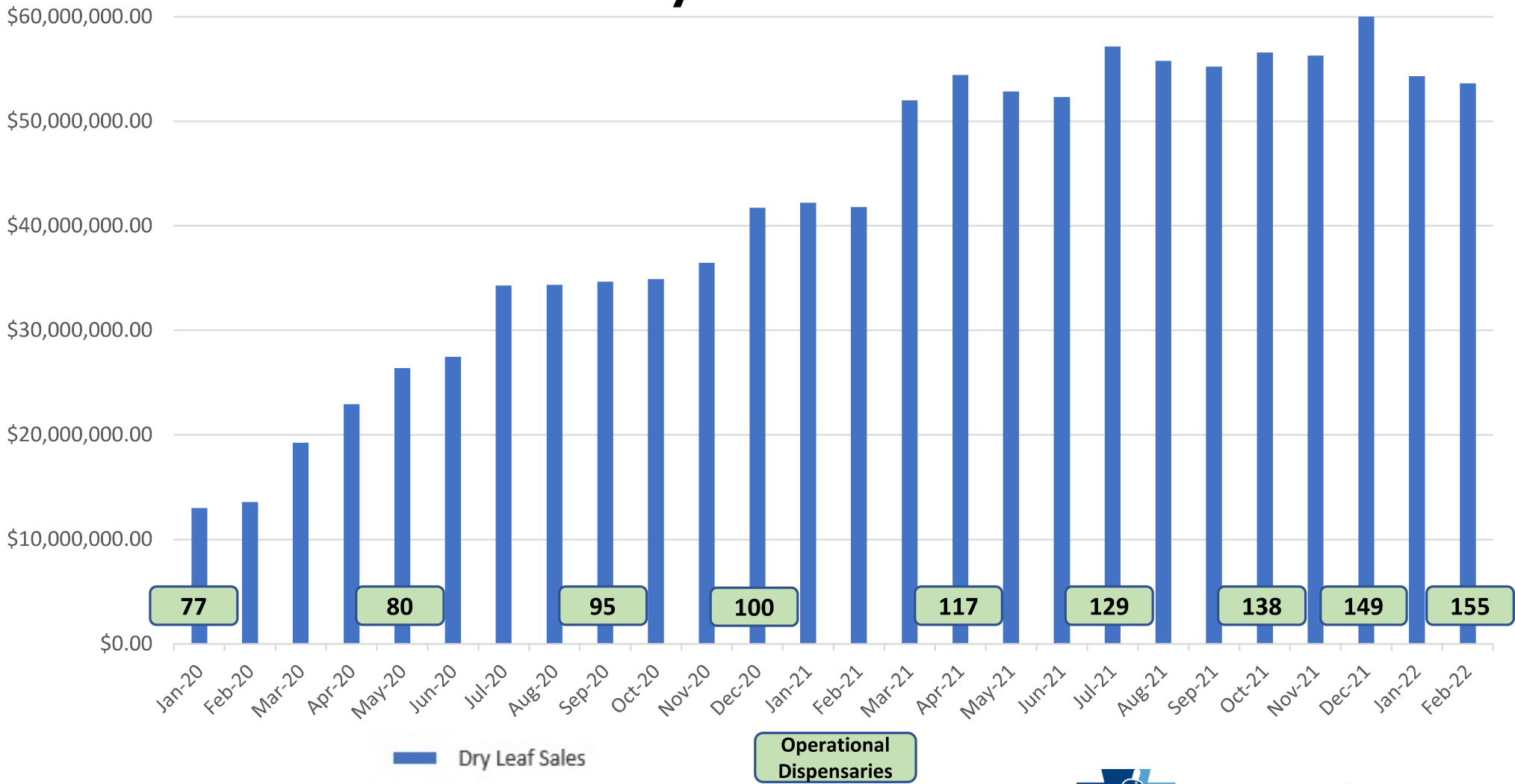
Medical Marijuana Program Update

Year on Year Dispensary Sales for Jan and Feb



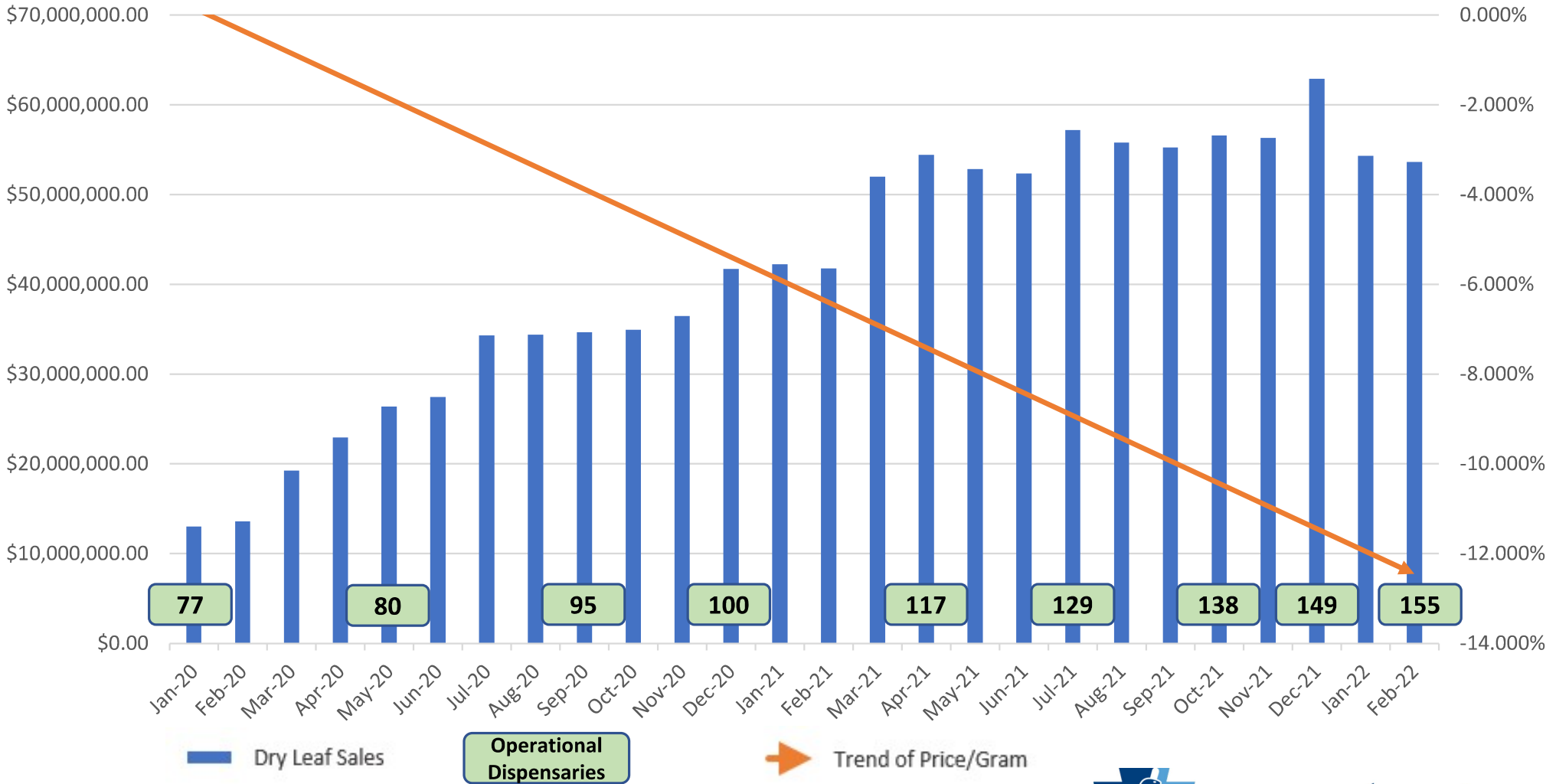
Medical Marijuana Program Update

Sales Volume Increases as Demand and Operational Dispensaries Grow
Dry Leaf Sales



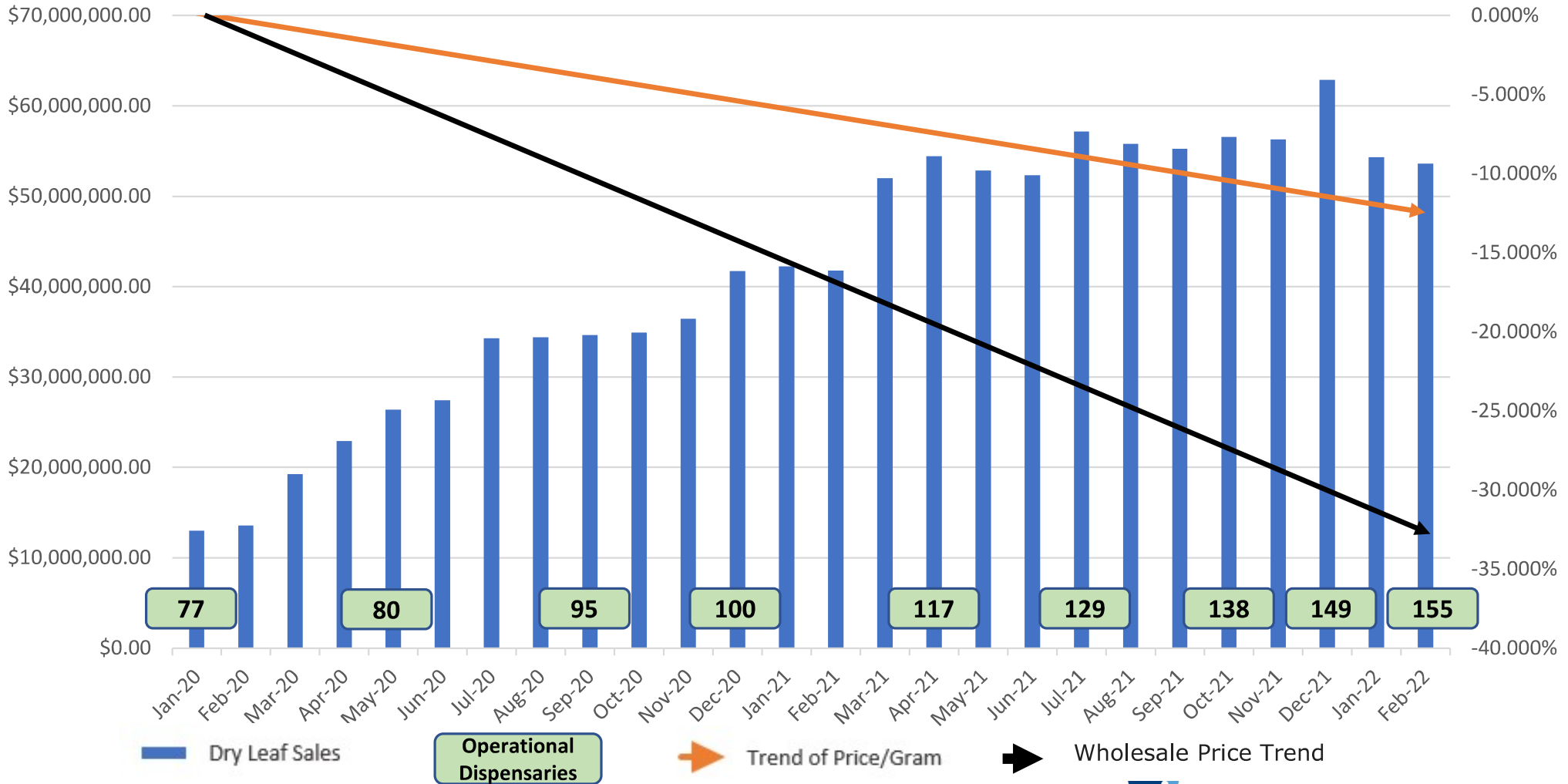
Medical Marijuana Program Update

Sales Volume Increases as Demand and Operational Dispensaries Grow
Dry Leaf Sales and Retail Pricing Trends



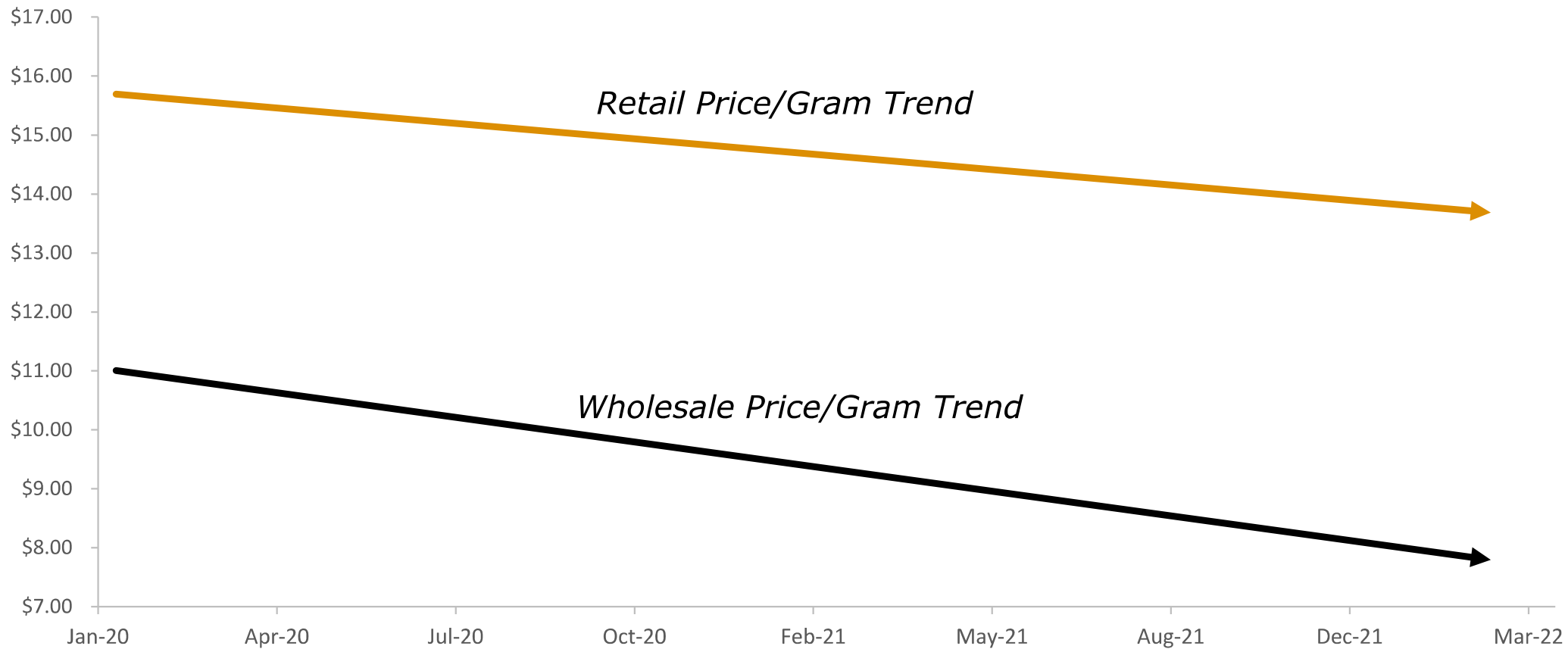
Medical Marijuana Program Update

Wholesale Price Decline Trend Greater Than Retail Price Reductions
Dry Leaf Retail and Wholesale Pricing Trends



Medical Marijuana Program Update

Dry Leaf Dispensary Pricing Trailing Grower/Processor Wholesale Pricing
Dry Leaf Retail and Wholesale Pricing Trends



Medical Marijuana Program Update

Dry Leaf Retail and Wholesale Pricing Details

