

ANNUAL HIV SURVEILLANCE SUMMARY REPORT

COMMONWEALTH OF PENNSYLVANIA

December 2014



Contact Information & Contributors

The Annual HIV Surveillance Summary is prepared by the
Bureau of Epidemiology
Pennsylvania Department of Health

Bureau of Epidemiology
Division of Infectious Disease Epidemiology
HIV Surveillance & Epidemiology Section

Atmaram Nambiar, MD, MPH, Director, Division of Infectious Disease Epidemiology
Godwin Obiri, DrPH, MS, Director, HIV Surveillance & Epidemiology
Martin Ngokion, MD, MPH, Epidemiologist
Michael Allen, MPH, Epidemiology Research Associate
Bonnie Krampe, MPH, Epidemiology Research Associate
Ikechukwu Onukogu, MS, Epidemiology Program Specialist

The HIV Surveillance & Epidemiology Section gratefully acknowledges the support of community health districts, county/municipal health departments, physicians, hospitals and laboratories reporting HIV cases in Pennsylvania. This project is funded by a grant award from the Centers for Disease Control and Prevention.

Requests for reprints, updates and inquiries may be sent to:

ATTN: 'Annual HIV Summary Report' Requests
HIV Surveillance & Epidemiology Section
Division of Infectious Disease Epidemiology
Bureau of Epidemiology
Pennsylvania Department of Health
Health & Welfare Building, Room 933
625 Forster Street
Harrisburg, PA 17120

The data provided in the tables, figures and maps are based on HIV reports received through March 31, 2015. Expanded analysis of data presented in the Annual HIV Surveillance Summary and other HIV data may be requested by sending e-mail to c-hivepi@state.pa.us or by telephone/fax to our office at 717-783-0481 (tel) or 717-772-6975 (fax).

The Pennsylvania Department of Health is an equal opportunity provider of grants, contracts, services and employment

Suggested Citation of Data Source: Annual HIV Surveillance Summary
Bureau of Epidemiology, PA Dept. of Health
Publication Number: HD0234P

A Special Note for the Readers of Pennsylvania HIV Surveillance Report Explanation for Changes in the Annual HIV Surveillance Summary Report

This note is intended to inform all readers of changes we have introduced in the Pennsylvania Annual Human Immunodeficiency Virus (HIV) Surveillance Summary Report. The format of this annual summary has changed from the format used in previous years to reflect some changes in the way HIV is viewed. This report considers HIV infection as a single disease entity with varying degrees of severity rather than using separate disease classifications for HIV infection without AIDS and acquired immunodeficiency syndrome (AIDS).

Since the inception of the annual summary report, HIV has been depicted as two conditions, HIV infection without AIDS and AIDS, respectively. This artificial separation served a purpose at the time. However, with advances in the clinical and epidemiologic experiences with HIV infection, HIV disease is now viewed as a spectrum condition; progressing from early stage of infection to full-blown symptomatic infection.

In 2002, Pennsylvania promulgated public health regulations revising the reportability of adult and pediatric AIDS, adding HIV, CD4 count (<200 cells/uL or <14%), detectable viral load and perinatal exposure to HIV. The new regulations took effect on October 18, 2002 and active surveillance was conducted retrospectively to January 1, 2000. Since that time, HIV reporting has been ongoing statewide with the exception of the county of Philadelphia where it did not become reportable by name until October 2005.

In addition, the US Centers for Disease Control and Prevention (CDC) has recently made changes to the HIV case definition, taking into account advances in testing and detection. This new case definition recognizes HIV infection as a disease with varying degrees of severity. For adults and adolescents (i.e., persons aged >13 years), the HIV infection classification system and the surveillance case definitions for HIV infection and AIDS were revised by the CDC in 2008 and combined into a single case definition for HIV infection. In addition, the HIV infection case definition for children aged <13 years and the AIDS case definition for children aged 18 months to <13 years were also revised. No changes were made to the HIV infection classification system, the 24 AIDS-defining conditions for children aged <13 years, or the AIDS case definition for children aged <18 months. These case definitions are intended for public health surveillance only and not as a guide for clinical diagnosis. CDC and the Council of State and Territorial Epidemiologists recommended that all states and territories conduct case surveillance of HIV infection and AIDS using the 2008 surveillance case definitions.

The data in previous years tables and figures were constructed separately for HIV infection without AIDS and AIDS. Most tables and figures now have HIV infection without AIDS combined with AIDS under one identity called HIV disease. Consequently, any comparison of this report to previous years should take into account these differences.

Questions or comments can be directed to

Dr. Godwin Obiri, Director, HIV Surveillance & Epidemiology
Bureau of Epidemiology
717/783-0481 or e-mail: gobiri@pa.gov

Table of Contents

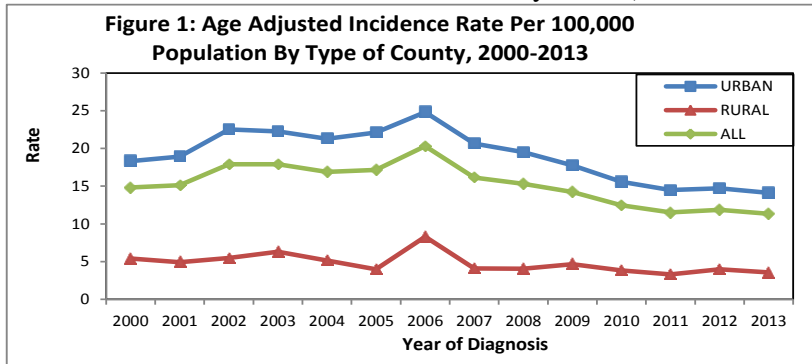
	PAGE
2014 HIV Surveillance Spotlight	4
Figure 1 Annual Diagnoses of AIDS and HIV infection Without AIDS, 1980-2014	5
Figure 2 Number of Cases of AIDS and HIV Infection Without AIDS by Current Vital Status and Year of Diagnosis	6
Table 1 Annual Diagnoses of HIV Disease for Adult/Adolescent and Pediatric by Year of Diagnosis	7
Table 2 Number of Cases of HIV Disease by Sex, Race/Ethnicity, and Year of Diagnosis, 2008-2014	8
Table 3 Number of Cases of HIV Disease by Age and Year of Diagnosis, 2008-2014	9
Table 4 Number of Cases of HIV Disease by Mode of Transmission and Year of Diagnosis, 2008-2014	10
Table 5 Number of HIV Disease by Mode of Transmission and Race/Ethnicity	11
Table 6 Cumulative Cases of HIV Disease by Vital Status and County of Residence, 2008-2014	12
Table 7 Annual Diagnoses of HIV Disease by County of Residence, 2010-2014	13
Figure 3 New Diagnoses of HIV Disease by County, 2013	14
Figure 4 Rate of New HIV Disease Diagnosed by County, 2013	15
Table 8 Characteristics of HIV Disease Cases by Time Interval of Diagnosis, 2008-2014	16
<i>Characteristics of HIV Disease For 7 Geographic Areas</i>	
Table 9 Characteristics of HIV Disease Cases by Time Interval of Diagnosis, AIDS Activities Coordinating Office	17
Table 10 Characteristics of HIV Disease Cases by Time Interval of Diagnosis, AIDSNET	18
Table 11 Characteristics of HIV Disease Cases by Time Interval of Diagnosis, Northeast Region	19
Table 12 Characteristics of HIV Disease Cases by Time Interval of Diagnosis, Northcentral Region	20
Table 13 Characteristics of HIV Disease Cases by Time Interval of Diagnosis, Southcentral Region	21
Table 14 Characteristics of HIV Disease Cases by Time Interval of Diagnosis, Southwest Region	22
Table 15 Characteristics of HIV Disease Cases by Time Interval of Diagnosis, Northwest Region	23
Figure 5 Confirmed Cases of Pediatric HIV Disease and Perinatal HIV Exposure, 2000-2012	24

HIV Surveillance Spotlight

Burden of HIV in Rural Counties of Pennsylvania

In this edition of the annual report, the HIV Surveillance Spotlight will examine new HIV disease diagnoses among individuals living in rural counties of Pennsylvania.

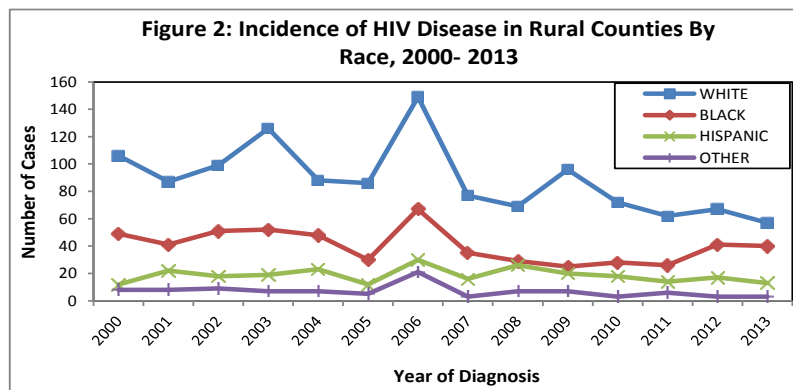
We examined HIV cases diagnosed between 2000 and 2013 by urban versus rural counties. There are 48 rural counties and 19 urban counties in Pennsylvania (The Center for Rural Pennsylvania). Over the 14



years examined, the age-adjusted incidence rate shows a preponderance of HIV cases in the 19 urban counties (Figure 1). While the HIV epidemic in Pennsylvania is largely concentrated in urban areas, cases of HIV disease have been diagnosed in 47 of the 48 rural counties in Pennsylvania (no HIV cases have been diagnosed in Cameron County). The crude

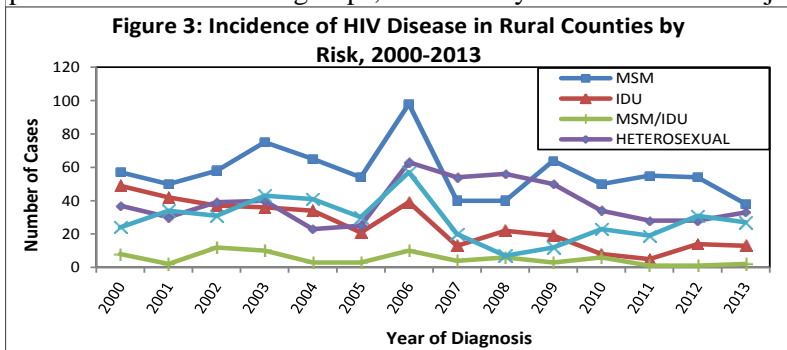
prevalence rate in rural counties in 2013 was 82.9/100,000 compared to a crude prevalence rate of 332.3/100,000 in the 19 urban counties. The racial distribution in rural counties tends to be

predominantly Caucasian (55%) among prevalent cases while Blacks make up the majority (51%) of prevalent cases in urban counties. The incident cases over the 14 years of observation shows more Caucasian diagnosed with HIV in the rural areas (Figure 2).



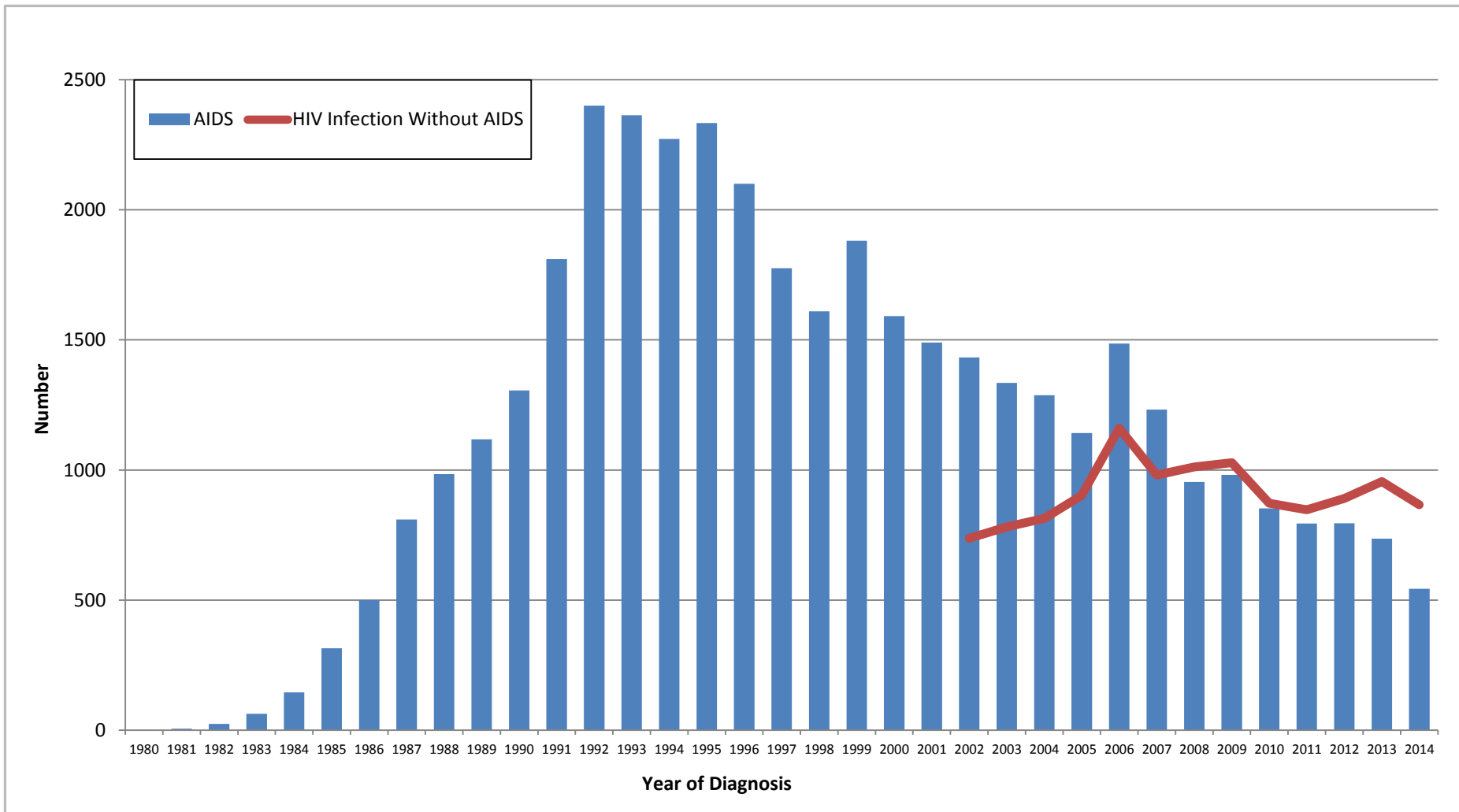
In examining the mode of HIV transmission in the rural counties over time (Figure 3), data show that Men having Sex with Men (MSM) predominates other risk groups, followed by heterosexual and Injection Drug Use (IDU). In 2012 and 2013 the rate of IDU in rural

counties as an identified risk factor was nearly double the rate among cases diagnosed in urban counties, but these data should be interpreted with caution due to potential effect of incarcerated populations and small numbers.



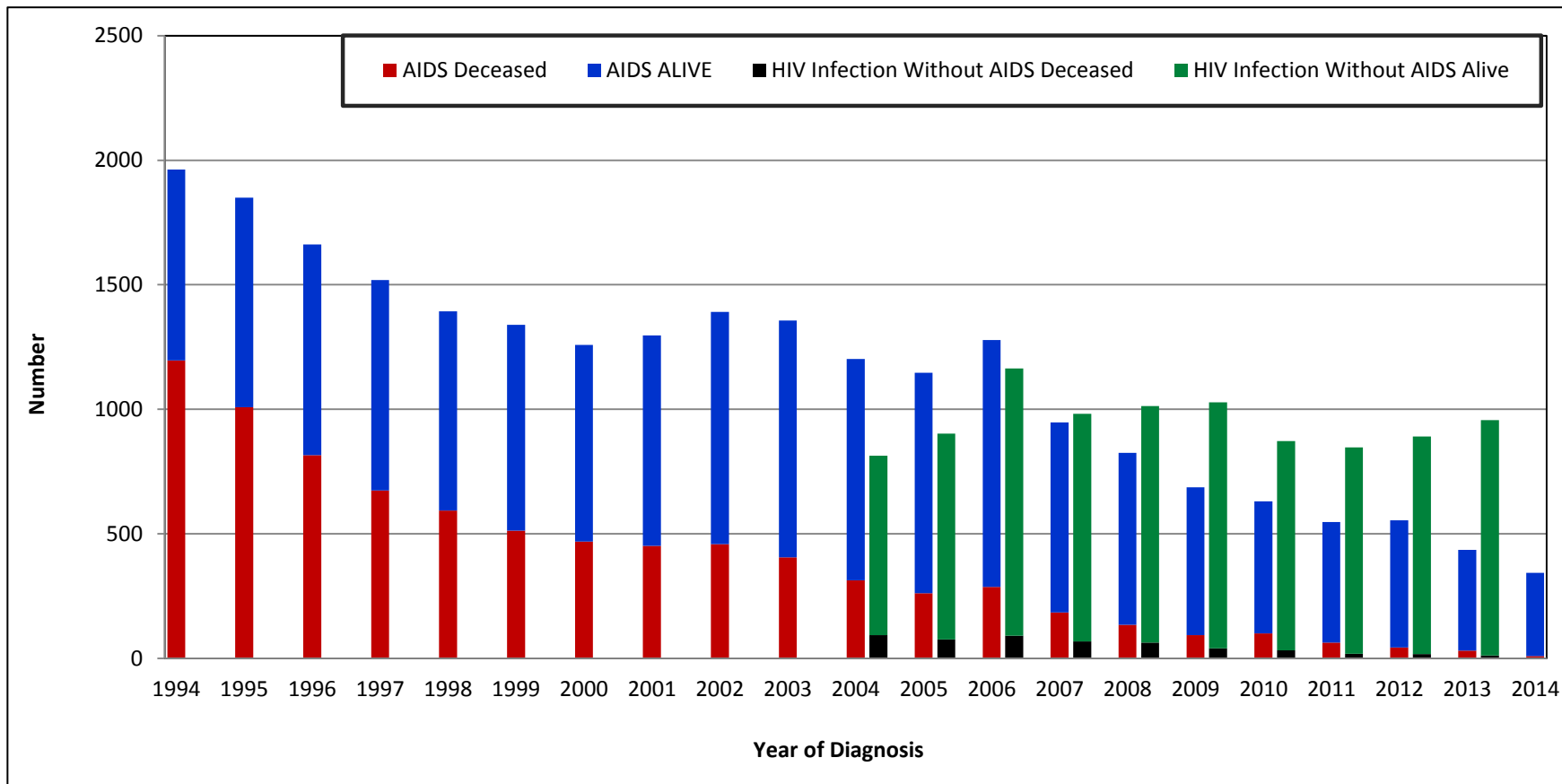
counties as an identified risk factor was nearly double the rate among cases diagnosed in urban counties, but these data should be interpreted with caution due to potential effect of incarcerated populations and small numbers.

Figure 1
 Annual Diagnoses of AIDS and HIV Infection Without AIDS by Year of Diagnosis in Pennsylvania
 1980-2014



Note: HIV Infection Without AIDS became reportable in PA in October 2002

Figure 2
 Number of Cases of AIDS and HIV Infection Without AIDS in Pennsylvania
 Current Vital Status by Year of Diagnosis
 1994-2014



Note: HIV Infection Without AIDS became reportable in PA in October 2002

TABLE 1

ANNUAL DIAGNOSES OF HIV DISEASE IN PENNSYLVANIA
 AMONG ADULT/ADOLESCENT AND PEDIATRIC CASES
 BY YEAR OF DIAGNOSIS, 1980-2014

YEAR OF DIAGNOSIS	ADULT/ADOLESCENT	PEDIATRIC*	TOTAL
1980	3	0	3
1981	8	1	9
1982	50	3	53
1983	107	5	112
1984	257	4	261
1985	779	27	806
1986	1,083	14	1,097
1987	1,548	15	1,563
1988	1,909	22	1,931
1989	2,441	26	2,467
1990	2,946	38	2,984
1991	2,965	39	3,004
1992	2,863	68	2,931
1993	2,352	69	2,421
1994	2,233	43	2,276
1995	2,144	45	2,189
1996	2,045	35	2,080
1997	1,888	28	1,916
1998	1,805	32	1,837
1999	1,736	31	1,767
2000	1,754	20	1,774
2001	1,780	21	1,801
2002 [^]	2,111	18	2,129
2003	2,118	19	2,137
2004	2,006	10	2,016
2005	2,037	13	2,050
2006	2,427	15	2,442
2007	1,920	10	1,930
2008	1,826	13	1,839
2009	1,710	5	1,715
2010	1,491	12	1,503
2011	1,388	6	1,394
2012	1,437	9	1,446
2013	1,388	4	1,392
2014	1,206	4	1,210
TOTAL	57,761	724	58,485

[^] HIV Infection Without AIDS became a reportable condition in Pennsylvania in October 2002

*Cases diagnosed with HIV disease before age 13

Table 2
 Number of Cases of HIV Disease Diagnosed in Pennsylvania
 Sex and Race/Ethnicity by Year of Diagnosis, 2009-2014.

	2009		2010		2011		2012		2013*		2014*		1980-2014 TOTAL TO DATE	
	number	percent	number	percent	number	percent	number	percent	number	percent	number	percent	number	percent
TOTAL MALE	1,265	100	1,141	100	1,081	100	1,078	100	1,093	100	952	100	43,956	100
WHITE (NON-HISPANIC)	395	31	380	33	345	32	335	31	321	29	304	32	16,597	38
BLACK (NON-HISPANIC)	553	44	531	47	535	49	546	51	574	53	475	50	20,347	46
HISPANIC	255	20	185	16	173	16	157	15	142	13	134	14	5,606	13
ASIAN/PACIFIC	14	1	14	1	7	1	15	1	22	2	19	2	260	1
NATIVE AMERICAN	1	0	1	0	0	0	2	0	5	0	4	0	37	0
MULTIPLE RACE	47	4	30	3	21	2	23	2	29	3	16	2	1,109	3
TOTAL FEMALE	450	100	362	100	313	100	368	100	299	100	258	100	14,529	100
WHITE (NON-HISPANIC)	75	17	73	20	66	21	70	19	62	21	55	21	3,142	22
BLACK (NON-HISPANIC)	251	56	215	59	209	67	228	62	193	65	155	60	8,544	59
HISPANIC	102	23	64	18	28	9	54	15	31	10	41	16	2,264	16
ASIAN/PACIFIC	4	1	3	1	5	2	6	2	8	3	5	2	76	1
NATIVE AMERICAN	1	0	1	0	0	0	1	0	0	0	0	0	18	0
MULTIPLE RACE	17	4	6	2	5	2	9	2	5	2	2	1	485	3
TOTAL	1,715	100	1,503	100	1,394	100	1,446	100	1,392	100	1,210	100	58,485	100

* Data may be incomplete partially due to reporting delays.

Note: Percentages may not add to 100% due to 'rounding'.

Table 3
 Number of Cases of HIV Disease Diagnosed in Pennsylvania
 Age by Year of Diagnosis, 2009-2014

	2009		2010		2011		2012		2013*		2014*		1980-2014 TOTAL TO DATE	
	number	percent	number	percent	number	percent	number	percent	number	percent	number	percent	number	percent
ALL AGES	1,722	100	1510	100	1403	100	1,498	100	1,392	100	1,210	100	58,485	100
0-12	5	0	12	1	6	0	9	1	4	0	4	0	724	1
13-19	82	5	83	5	71	5	68	5	70	5	60	5	1,789	3
20-29	483	28	426	28	408	29	453	30	429	31	390	32	14,052	24
30-39	394	23	361	24	310	22	300	20	318	23	271	22	20,500	35
40-49	464	27	350	23	335	24	329	22	284	20	236	20	14,104	24
OVER 49	287	17	271	18	264	19	287	19	287	21	249	21	7,316	13

* Data may be incomplete partially due to reporting delays.

Note: Percentages may not add to 100% due to 'rounding'.

Table 4
 Number of Cases of HIV Disease in Pennsylvania
 Mode of Transmission by Year of Diagnosis, 2009-2014

	2009		2010		2011		2012		2013*		2014*		TOTAL TO DATE 1980-2014	
	number	percent	number	percent	number	percent	number	percent	number	percent	number	percent	number	percent
ALL MODES	1,715	100	1,503	100	1,394	100	1,446	100	1,392	100	1,210	100	58,485	100
MEN SEX W/MEN (MSM)	667	39	656	44	619	44	640	44	686	49	608	50	21,828	37
INJECTING DRUG USE (IDU)	177	10	125	8	98	7	103	7	86	6	57	5	14,962	26
MSM & IDU	38	2	34	2	24	2	28	2	17	1	18	1	2,584	4
COAGULATION DISORDER	0	0	0	0	0	0	0	0	0	0	0	0	267	0
HETEROSEXUAL CONTACT	549	32	559	37	535	38	490	34	475	34	370	31	14,796	25
TRANSFUSION RECEIVED	0	0	0	0	0	0	0	0	0	0	0	0	222	0
UNDETERMINED/OTHER	276	16	115	8	111	8	176	12	122	9	152	13	3,085	5
ALL PEDIATRIC MODES**	8	0	14	1	7	1	9	1	6	0	5	0	741	1

* Data may be incomplete partially due to reporting delays.

**Includes adult cases that had pediatric modes of transmission (e.g., perinatal exposure)

Note: Percentages may not add to 100% due to 'rounding'.

Table 5

HIV Disease by Mode of Transmission by Race/Ethnicity 1980-1990, 1991-2000 and 2001-2014

	WHITE NON-HISPANIC		BLACK NON-HISPANIC		HISPANIC		ASIAN/PACIFIC		NATIVE AMERICAN		MULTIPLE RACE		ALL RACES	
	number	percent	number	percent	number	percent	number	percent	number	percent	number	percent	number	percent
1980-1990														
ALL MODES	5,524	100	4,290	100	1,306	100	25	100	5	100	136	100	11,286	100
MEN SEX W/MEN (MSM)	3,789	69	1,780	41	226	17	19	76	2	40	53	39	5,869	52
INJECTING DRUG USE (IDU)	701	13	1,558	36	787	60	1	4	2	40	51	38	3,100	27
MSM & IDU	319	6	415	10	88	7	1	4	0	0	24	18	847	8
COAGULATION DISORDER	194	4	10	0	6	0	0	0	0	0	0	0	210	2
HETEROSEXUAL CONTACT	235	4	338	8	145	11	2	8	0	0	6	4	726	6
TRANSFUSION RECEIVED	119	2	18	0	3	0	1	4	0	0	0	0	141	1
ALL PEDIATRIC MODES	55	1	68	2	29	2	0	0	1	20	2	1	155	1
UNDETERMINED/OTHER	112	2	103	2	22	2	1	4	0	0	0	0	238	2
1991-2000														
ALL MODES	6,900	100	11,783	100	2,907	100	68	100	16	100	521	100	22,195	100
MEN SEX W/MEN (MSM)	3,746	54	2,865	24	395	14	33	49	8	50	141	27	7,188	32
INJECTING DRUG USE (IDU)	1,505	22	4,838	41	1,407	48	5	7	2	13	200	38	7,957	36
MSM & IDU	314	5	629	5	129	4	0	0	0	0	46	9	1,118	5
COAGULATION DISORDER	42	1	4	0	1	0	0	0	0	0	1	0	48	0
HETEROSEXUAL CONTACT	936	14	2,862	24	751	26	17	25	4	25	107	21	4,677	21
TRANSFUSION RECEIVED	42	1	21	0	4	0	5	7	0	0	1	0	73	0
ALL PEDIATRIC MODES	55	1	257	2	88	3	2	3	0	0	9	2	411	2
UNDETERMINED/OTHER	260	4	307	3	132	5	6	9	2	13	16	3	723	3
2001-2014*														
ALL MODES	7,315	100	12,818	100	3,657	100	243	100	34	100	937	100	25,004	100
MEN SEX W/MEN (MSM)	3,782	52	3,700	29	881	24	96	40	14	41	298	32	8,771	35
INJECTING DRUG USE (IDU)	926	13	1,899	15	895	24	12	5	2	6	171	18	3,905	16
MSM & IDU	238	3	234	2	104	3	2	1	1	3	40	4	619	2
COAGULATION DISORDER	6	0	1	0	2	0	0	0	0	0	0	0	9	0
HETEROSEXUAL CONTACT	1,651	23	5,917	46	1,365	37	97	40	17	50	346	37	9,393	38
TRANSFUSION RECEIVED	3	0	4	0	1	0	0	0	0	0	0	0	8	0
ALL PEDIATRIC MODES	22	0	107	1	35	1	4	2	0	0	7	1	175	1
UNDETERMINED/OTHER	687	9	956	7	374	10	32	13	0	0	75	8	2,124	8

* The more recent pattern, 2001-2014 is better reflection of current distribution of cases than the earlier periods, 1980-1990 and 1991-2000.

Note: Percentages may not add to 100% due to 'rounding'.

Table 6
 Cumulative Cases for HIV Disease in Pennsylvania
 Mortality Status and County of Residence, 1980-2014

COUNTY	ALIVE	REPORTED DEAD	CUMULATIVE CASES
PHILADELPHIA	18,286	12,832	31,118
ALLEGHENY	2,758	1,841	4,599
DELAWARE	1,670	1,195	2,865
MONTGOMERY	1,125	716	1,841
DAUPHIN	1,024	655	1,679
BERKS	995	585	1,580
LEHIGH	1,041	482	1,523
LANCASTER	856	519	1,375
BUCKS	819	532	1,351
YORK	770	435	1,205
CHESTER	520	449	969
NORTHAMPTON	409	266	675
LUZERNE	359	228	587
CUMBERLAND	392	192	584
ERIE	327	193	520
LACKAWANNA	293	172	465
MONROE	284	173	457
LYCOMING	226	169	395
WESTMORELAND	175	161	336
CENTRE	174	65	239
LEBANON	138	95	233
SCHUYLKILL	140	83	223
CAMBRIA	132	85	217
FRANKLIN	142	74	216
BEAVER	110	105	215
WASHINGTON	117	96	213
UNION	131	45	176
BLAIR	81	69	150
FAYETTE	96	46	142
NORTHUMBERLAND	80	57	137
PIKE	97	37	134
SOMERSET	89	41	130
ADAMS	78	50	128
BUTLER	81	46	127
CARBON	84	42	126

COUNTY	PRESUMED ALIVE	REPORTED DEAD	CUMULATIVE CASES
MERCER	71	55	126
WAYNE	68	54	122
HUNTINGDON	71	40	111
CRAWFORD	68	41	109
CLEARFIELD	67	33	100
LAWRENCE	52	45	97
COLUMBIA	63	26	89
INDIANA	38	29	67
BRADFORD	39	27	66
ARMSTRONG	33	32	65
MCKEAN	30	20	50
PERRY	32	17	49
GREENE	24	23	47
VENANGO	20	27	47
BEDFORD	25	16	41
TIOGA	21	18	39
MIFFLIN	20	15	35
SUSQUEHANNA	19	15	34
WARREN	22	11	33
SNYDER	18	9	27
CLARION	20	6	26
MONTOUR	16	10	26
JEFFERSON	15	10	25
WYOMING	12	13	25
JUNIATA	17	7	24
CLINTON	14	9	23
FOREST	13	1	14
ELK	8	3	11
FULTON	9	1	10
POTTER	3	6	9
SULLIVAN	6	2	8
CAMERON	0	0	0
STATE TOTAL	35,033	23,452	58,485

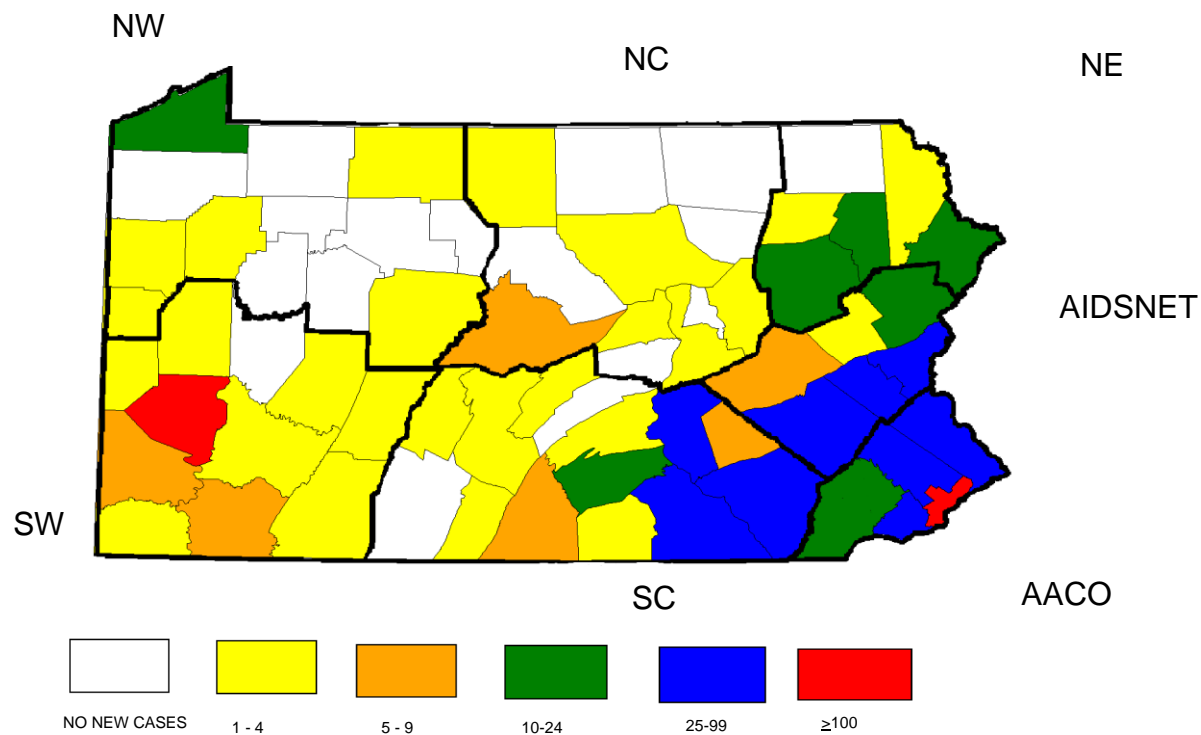
Table 7
Annual Diagnoses of HIV Disease in Pennsylvania
By County of Residence
2011-2014

COUNTY	2011	2012	2013	2014	2013 RATE PER 100,000*
ADAMS	8	5	1	8	0.98
ALLEGHENY	131	125	123	132	9.99
ARMSTRONG	3	2	0	1	0.00
BEAVER	7	6	4	6	2.35
BEDFORD	1	5	0	1	0.00
BERKS	27	39	36	37	8.71
BLAIR	3	3	3	4	2.38
BRADFORD	4	1	0	0	0.00
BUCKS	45	41	39	35	6.22
BUTLER	7	4	3	5	1.62
CAMBRIA	3	10	4	6	2.85
CAMERON	0	0	0	0	0.00
CARBON	5	6	1	10	1.54
CENTRE	3	7	8	11	5.15
CHESTER	32	33	20	18	3.93
CLARION	2	2	0	0	0.00
CLEARFIELD	1	1	1	1	1.23
CLINTON	0	3	0	1	0.00
COLUMBIA	5	4	1	3	1.50
CRAWFORD	5	5	0	3	0.00
CUMBERLAND	9	9	16	10	6.63
DAUPHIN	57	40	33	38	12.18
DELAWARE	86	92	81	65	14.41
ELK	0	0	0	1	0.00
ERIE	10	10	16	11	5.71
FAYETTE	4	6	7	7	5.19
FOREST	1	0	0	0	0.00
FRANKLIN	8	4	7	8	4.60
FULTON	0	0	1	0	6.82
GREENE	0	2	1	1	2.64
HUNTINGDON	0	1	1	0	2.19
INDIANA	2	3	1	0	1.14
JEFFERSON	0	0	0	0	0.00
JUNIATA	0	1	0	0	0.00
LACKAWANNA	16	13	12	10	5.61

COUNTY	2011	2012	2013	2014	2013 RATE PER 100,000*
LANCASTER	39	32	35	28	6.61
LAWRENCE	4	0	3	6	3.36
LEBANON	7	10	6	6	4.43
LEHIGH	51	43	40	44	11.26
LUZERNE	18	17	17	16	5.31
LYCOMING	5	6	4	4	3.43
MCKEAN	1	2	2	0	4.65
MERCER	4	2	2	1	1.74
MIFFLIN	1	1	1	0	2.15
MONROE	10	14	18	7	10.77
MONTGOMERY	40	47	70	42	8.62
MONTOUR	0	0	0	0	0.00
NORTHAMPTON	7	4	26	2	8.67
NORTHUMBERLAND	0	1	3	2	3.19
PERRY	1	0	2	2	4.39
PHILADELPHIA	666	724	674	564	43.40
PIKE	3	4	13	4	22.97
POTTER	0	0	1	0	5.72
SCHUYLKILL	4	7	5	4	3.40
SNYDER	0	0	0	1	0.00
SOMERSET	2	2	2	2	2.61
SULLIVAN	0	1	0	0	0.00
SUSQUEHANNA	0	1	0	2	0.00
TIOGA	0	0	0	0	0.00
UNION	4	5	3	1	6.69
VENANGO	1	0	1	0	1.86
WARREN	0	0	0	0	0.00
WASHINGTON	3	7	9	2	4.32
WAYNE	0	0	3	3	5.82
WESTMORELAND	5	9	4	11	1.10
WYOMING	0	0	1	0	3.57
YORK	33	23	27	23	6.15
STATE TOTAL	1,394	1,445	1,392	1,210	10.90

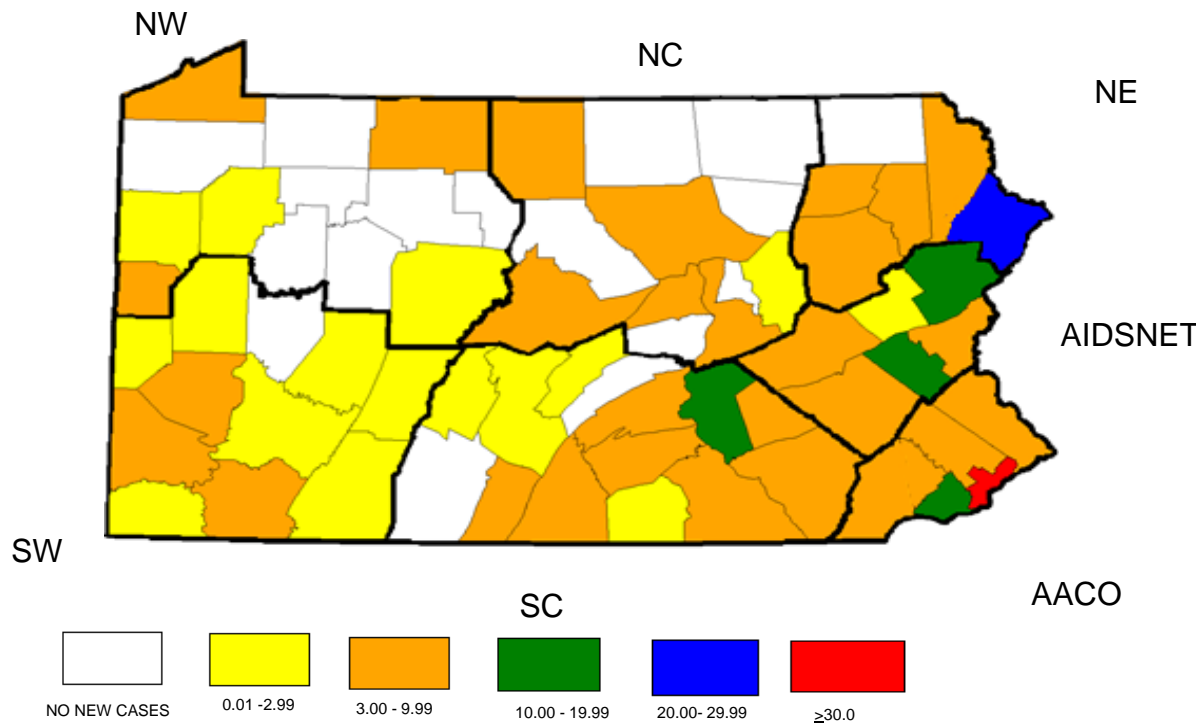
*Rates based on 2013 estimated population

Figure 3
 New HIV Disease Diagnosed in Pennsylvania
 Number of Cases for Each County, 2013



AACO=AIDS Activities Coordinating Office
 AIDSNET = AIDSNET
 NE = Northeastern Regional AIDS Planning Coalition
 NC = North Central District AIDS Coalition
 SC = South Central Pennsylvania AIDS Planning Coalition
 SW = Southwest Pennsylvania AIDS Planning Coalition
 NW = Northwest Pennsylvania Rural AIDS Alliance

Figure 4
HIV Disease Diagnosed In Pennsylvania
Rate* (per 100,000) for Each County, 2013



AACO=AIDS Activities Coordinating Office
AIDSNET = AIDSNET
NE = Northeastern Regional AIDS Planning Coalition
NC = North Central District AIDS Coalition
SC = South Central Pennsylvania AIDS Planning Coalition
SW = Southwest Pennsylvania AIDS Planning Coalition
NW = Northwest Pennsylvania Rural AIDS Alliance

* Rates are based on 2013 estimated population

Table 8
HIV Disease in Pennsylvania
Characteristics of Cases by Interval of Diagnosis, 2009-2014.

		BEFORE 2009		2009		2010		2011		2012		2013*		2014*		TOTAL TO DEC 31, 2014		CURRENTLY LIVING DEC 31, 2014	
		number	percent	number	percent	number	percent	number	percent	number	percent	number	percent	number	percent	number	percent	number	percent
	TOTAL CASES	49,826	100	1,715	100	1,503	100	1,394	100	1,445	100	1,392	100	1,210	100	58,485	100	35,033	100
SEX	MALE	37,347	75	1,265	74	1,141	76	1,081	78	1,077	75	1,093	79	952	79	43,956	75	25,201	72
	FEMALE	12,479	25	450	26	362	24	313	22	368	25	299	21	258	21	14,529	25	9,832	28
RACE/ETHNICITY	WHITE	17,259	35	470	27	453	30	411	29	404	28	383	28	359	30	19,739	34	10,918	31
	BLACK	24,426	49	804	47	746	50	744	53	774	54	767	55	630	52	28,891	49	17,194	49
	HISPANIC	6,504	13	357	21	249	17	201	14	211	15	173	12	175	14	7,870	13	5,364	15
	ASIAN/PACIFIC	214	0	18	1	17	1	12	1	21	1	30	2	24	2	336	1	274	1
	NATIVE AMERICAN	39	0	2	0	2	0	0	0	3	0	5	0	4	0	55	0	43	0
	MULTIRACE	1,384	3	64	4	36	2	26	2	32	2	34	2	18	1	1,594	3	1,240	4
AGE (YEARS)	< 13	684	1	5	0	12	1	6	0	9	1	4	0	4	0	724	1	540	2
	13 - 19	1,355	3	82	5	83	6	71	5	68	5	70	5	60	5	1,789	3	1,484	4
	20 - 29	11,464	23	483	28	426	28	408	29	452	31	429	31	390	32	14,052	24	9,569	27
	30 - 39	18,546	37	394	23	361	24	310	22	300	21	318	23	271	22	20,500	35	11,544	33
	40 - 49	12,106	24	464	27	350	23	335	24	329	23	284	20	236	20	14,104	24	8,142	23
	Over 49	5,671	11	287	17	271	18	264	19	287	20	287	21	249	21	7,316	13	3,754	11
MODE OF TRANSMISSION	MEN SEX W/MEN (MSM)	17,953	36	667	39	656	44	619	44	639	44	686	49	608	50	21,828	37	12,844	37
	INJECTING DRUG USE(IDU)	14,316	29	177	10	125	8	98	7	103	7	86	6	57	5	14,962	26	6,929	20
	MSM & IDU	2,425	5	38	2	34	2	24	2	28	2	17	1	18	1	2,584	4	1,246	4
	COAGULATION DISORDER	267	1	0	0	0	0	0	0	0	0	0	0	0	0	267	0	70	0
	HETEROSEXUAL CONTACT	11,818	24	549	32	559	37	535	38	490	34	475	34	370	31	14,796	25	11,091	32
	TRANSFUSION	222	0	0	0	0	0	0	0	0	0	0	0	0	0	222	0	31	0
	ALL PEDIATRIC	692	1	8	0	14	1	7	1	9	1	6	0	5	0	741	1	555	2
	UNDETERMINED/OTHER	2,133	4	276	16	115	8	111	8	176	12	122	9	152	13	3,085	5	2,267	6
COALITION AREA	AIDS ACTIVITIES COORDINATING OFFICE	32,640	66	1,145	67	945	63	869	62	937	65	884	64	724	60	38,144	65	22,420	64
	AIDSNET	3,890	8	122	7	125	8	104	7	113	8	126	9	104	9	4,584	8	2,953	8
	NORTHEASTERN REGIONAL HIV PLANNING COALITION	1,128	2	50	3	36	2	37	3	35	2	46	3	35	3	1,367	2	848	2
	NORTH CENTRAL DISTRICT AIDS COALITION	1,082	2	32	2	28	2	21	2	28	2	20	1	23	2	1,234	2	791	2
	SOUTH CENTRAL PENNSYLVANIA AIDS PLANNING COALITION	4,958	10	159	9	161	11	167	12	134	9	133	10	128	11	5,840	10	3,655	10
	SOUTHWEST PENNSYLVANIA AIDS PLANNING COALITION	5,142	10	172	10	170	11	167	12	176	12	158	11	173	14	6,158	11	3,653	10
	NORTHWEST PENNSYLVANIA RURAL AIDS ALLIANCE	986	2	35	2	38	3	29	2	22	2	25	2	23	2	1,158	2	713	2

* Data may be incomplete due to lag in reporting.

Cummulative are cases diagnosed through December 31, 2014 and reported through March 31, 2015.

Note: Percentages may not add to 100% due to 'rounding'.

Table 9
HIV Disease in Pennsylvania
Characteristics of Cases by Time Interval of Diagnosis

AIDS Activities Coordinating Office
Bucks, Delaware, Chester, Montgomery, and Philadelphia Counties

		BEFORE 2009		2009		2010		2011		2012		2013*		2014*		TOTAL TO DEC 31, 2014		CURRENTLY LIVING DEC 31, 2014	
		number	percent	number	percent	number	percent	number	percent	number	percent	number	percent	number	percent	number	percent	number	percent
	TOTAL CASES	32,640	100	1,145	100	945	100	869	100	937	100	884	100	724	100	38,144	100	22,420	100
SEX	MALE	24,318	75	845	74	692	73	661	76	693	74	701	79	573	79	28,483	75	15,981	71
	FEMALE	8,322	25	300	26	253	27	208	24	244	26	183	21	151	21	9,661	25	6,439	29
RACE/ETHNICITY	WHITE	8,430	26	213	19	189	20	185	21	181	19	157	18	147	20	9,502	25	5,075	23
	BLACK	19,779	61	635	55	572	61	557	64	600	64	588	67	457	63	23,188	61	13,516	60
	HISPANIC	3,511	11	249	22	149	16	112	13	126	13	98	11	97	13	4,342	11	2,972	13
	ASIAN/PACIFIC	157	0	14	1	16	2	8	1	14	1	22	2	14	2	245	1	201	1
	NATIVE AMERICAN	27	0	2	0	1	0	0	0	3	0	5	1	4	1	42	0	36	0
	MULTIRACE	736	2	32	3	18	2	7	1	13	1	14	2	5	1	825	2	620	3
AGE (YEARS)	< 13	457	1	4	0	6	1	3	0	6	1	1	0	1	0	478	1	366	2
	13 - 19	920	3	58	5	53	6	50	6	45	5	50	6	35	5	1,211	3	1,016	5
	20 - 29	7,483	23	364	32	284	30	263	30	322	34	293	33	250	35	9,259	24	6,335	28
	30 - 39	11,933	37	258	23	225	24	195	22	187	20	194	22	152	21	13,144	34	7,220	32
	40 - 49	7,971	24	281	25	207	22	204	23	200	21	170	19	130	18	9,163	24	5,106	23
	Over 49	3,876	12	180	16	170	18	154	18	177	19	176	20	156	22	4,889	13	2,377	11
			0	0	0	0	0	0	0	0	0	0	0	0	0	0	0	0	0
MODE OF TRANSMISSION	MSM	11,220	34	430	38	385	41	355	41	391	42	441	50	371	51	13,593	36	7,878	35
	IDU	9,963	31	114	10	87	9	64	7	68	7	39	4	33	5	10,368	27	4,630	21
	MSM/IDU	1,569	5	29	3	19	2	19	2	23	2	12	1	9	1	1,680	4	800	4
	COAGULATION DISORDER	65	0	0	0	0	0	0	0	0	0	0	0	0	0	65	0	19	0
	HETEROSEXUAL	8,579	26	344	30	408	43	400	46	399	43	364	41	281	39	10,775	28	8,015	36
	TRANSFUSION	99	0	0	0	0	0	0	0	0	0	0	0	0	0	99	0	10	0
	PEDIATRIC	459	1	5	0	7	1	4	0	6	1	2	0	2	0	485	1	371	2
	UNDETERMINED MODE	686	2	223	19	39	4	27	3	50	5	26	3	28	4	1,079	3	697	3
COUNTY	BUCKS	1,117	3	39	3	35	4	45	5	41	4	39	4	35	5	1,351	4	819	4
	CHESTER	818	3	27	2	21	2	32	4	33	4	20	2	18	2	969	3	520	2
	DELAWARE	2,343	7	110	10	88	9	86	10	92	10	81	9	65	9	2,865	8	1,670	7
	MONTGOMERY	1,510	5	63	6	69	7	40	5	47	5	70	8	42	6	1,841	5	1,125	5
	PHILADELPHIA	26,852	82	906	79	732	77	666	77	724	77	674	76	564	78	31,118	82	18,286	82

* Data may be incomplete due to lag in reporting.
Cumulative are cases diagnosed through December 31, 2014 and reported through March 31, 2015.
Note: Percentages may not add to 100% due to 'rounding'.

Table 10
HIV Disease in Pennsylvania
Characteristics of Cases by Time Interval of Diagnosis

AIDSNET
Berks, Carbon, Lehigh, Monroe, Northampton, and Schuylkill Counties

		BEFORE 2009		2009		2010		2011		2012		2013*		2014*		TOTAL TO DEC 31, 2014		CURRENTLY LIVING DEC 31, 2014	
		number	percent	number	percent	number	percent	number	percent	number	percent	number	percent	number	percent	number	percent	number	percent
	TOTAL CASES	3,890	100	122	100	125	100	104	100	113	100	126	100	104	100	4,584	100	2,953	100
SEX	MALE	2,624	67	78	64	95	76	76	73	81	72	94	75	67	64	3,115	68	1,913	65
	FEMALE	1,266	33	44	36	30	24	28	27	32	28	32	25	37	36	1,469	32	1,040	35
RACE/ETHNICITY	WHITE	1,509	39	43	35	55	44	30	29	39	35	50	40	27	26	1,753	38	1,000	34
	BLACK	682	18	28	23	27	22	34	33	26	23	35	28	25	24	857	19	596	20
	HISPANIC	1,536	39	46	38	41	33	35	34	44	39	33	26	49	47	1,784	39	1,193	40
	ASIAN/PACIFIC	10	0	0	0	0	0	0	0	1	1	3	2	1	1	15	0	11	0
	NATIVE AMERICAN	2	0	0	0	0	0	0	0	0	0	0	0	0	0	2	0	2	0
	MULTIRACE	151	4	5	4	2	2	5	5	3	3	5	4	2	2	173	4	151	5
			0		0		0		0		0		0		0		0		0
AGE (YEARS)	< 13	68	2	1	1	2	2	0	0	1	1	0	0	1	1	73	2	56	2
	13 - 19	98	3	3	2	4	3	1	1	5	4	3	2	6	6	120	3	94	3
	20 - 29	883	23	20	16	34	27	27	26	29	26	24	19	22	21	1,039	23	715	24
	30 - 39	1,503	39	31	25	23	18	22	21	20	18	26	21	26	25	1,651	36	981	33
	40 - 49	942	24	42	34	37	30	25	24	24	21	38	30	28	27	1,136	25	741	25
	Over 49	396	10	25	20	25	20	29	28	34	30	35	28	21	20	565	12	366	12
			0		0		0		0		0		0		0		0		0
MODE OF TRANSMISSION	MSM	924	24	39	32	56	45	38	37	42	37	48	38	34	33	1,181	26	727	25
	IDU	1,285	33	17	14	13	10	12	12	14	12	10	8	6	6	1,357	30	721	24
	MSM/IDU	148	4	1	1	3	2	3	3	2	2	2	2	2	2	161	4	95	3
	COAGULATION DISORDER	39	1	0	0	0	0	0	0	0	0	0	0	0	0	39	1	14	0
	HETEROSEXUAL	930	24	59	48	36	29	33	32	33	29	40	32	34	33	1,165	25	883	30
	TRANSFUSION	19	0	0	0	0	0	0	0	0	0	0	0	0	0	19	0	4	0
	PEDIATRIC	72	2	2	2	2	2	0	0	1	1	0	0	1	1	78	2	61	2
	UNDETERMINED MODE	473	12	4	3	15	12	18	17	21	19	26	21	27	26	584	13	448	15
COUNTY	BERKS	1,368	35	38	31	35	28	27	26	39	35	36	29	37	36	1,580	34	995	34
	CARBON	89	2	6	5	9	7	5	5	6	5	1	1	10	10	126	3	84	3
	LEHIGH	1,258	32	47	39	40	32	51	49	43	38	40	32	44	42	1,523	33	1,041	35
	MONROE	377	10	15	12	16	13	10	10	14	12	18	14	7	7	457	10	284	10
	NORTHAMPTON	607	16	8	7	21	17	7	7	4	4	26	21	2	2	675	15	409	14
	SCHUYLKILL	191	5	8	7	4	3	4	4	7	6	5	4	4	4	223	5	140	5

* Data may be incomplete due to lag in reporting.
Cumulative are cases diagnosed through December 31, 2014 and reported through March 31, 2015.
Note: Percentages may not add to 100% due to 'rounding'.

Table 11
HIV Disease in Pennsylvania
Characteristics of Cases by Time Interval of Diagnosis
NORTHEASTERN REGIONAL HIV PLANNING COALITION
Lackawanna, Luzerne, Pike, Susquehanna, Wayne, and Wyoming Counties

		BEFORE 2009		2009		2010		2011		2012		2013*		2014*		TOTAL TO DEC 31, 2014		CURRENTLY LIVING DEC 31, 2014	
		number	percent	number	percent	number	percent	number	percent	number	percent	number	percent	number	percent	number	percent	number	percent
	TOTAL CASES	1,128	100	50	100	36	100	37	100	35	100	46	100	35	100	1,367	100	848	100
SEX	MALE	875	78	35	70	26	72	29	78	27	77	29	63	22	63	1,043	76	605	71
	FEMALE	253	22	15	30	10	28	8	22	8	23	17	37	13	37	324	24	243	29
RACE/ETHNICITY	WHITE	706	63	20	40	21	58	22	59	23	66	23	50	23	66	838	61	472	56
	BLACK	222	20	13	26	7	19	9	24	7	20	14	30	7	20	279	20	193	23
	HISPANIC	145	13	14	28	7	19	6	16	5	14	6	13	3	9	186	14	135	16
	ASIAN/PACIFIC	3	0	1	2	0	0	0	0	0	0	0	0	1	3	5	0	5	1
	NATIVE AMERICAN	3	0	0	0	1	3	0	0	0	0	0	0	0	0	4	0	2	0
	MULTIRACE	49	4	2	4	0	0	0	0	0	0	3	7	1	3	55	4	41	5
		0	0	0	0	0	0	0	0	0	0	0	0	0	0	0	0	0	0
AGE (YEARS)	< 13	20	2	0	0	0	0	0	0	0	0	1	2	0	0	21	2	16	2
	13 - 19	27	2	3	6	1	3	1	3	1	3	0	0	0	0	33	2	29	3
	20 - 29	227	20	9	18	5	14	6	16	7	20	16	35	7	20	277	20	189	22
	30 - 39	405	36	13	26	8	22	11	30	5	14	10	22	8	23	460	34	271	32
	40 - 49	328	29	18	36	16	44	14	38	8	23	11	24	11	31	406	30	245	29
	Over 49	121	11	7	14	6	17	5	14	14	40	8	17	9	26	170	12	98	12
		0	0	0	0	0	0	0	0	0	0	0	0	0	0	0	0	0	0
MODE OF TRANSMISSION	MSM	368	33	16	32	14	39	14	38	20	57	15	33	9	26	456	33	267	31
	IDU	323	29	7	14	3	8	4	11	4	11	10	22	2	6	353	26	170	20
	MSM/IDU	62	5	0	0	1	3	1	3	0	0	0	0	0	0	64	5	30	4
	COAGULATION DISORDER	13	1	0	0	0	0	0	0	0	0	0	0	0	0	13	1	5	1
	HETEROSEXUAL	200	18	24	48	18	50	16	43	8	23	16	35	16	46	298	22	245	29
	TRANSFUSION	5	0	0	0	0	0	0	0	0	0	0	0	0	0	5	0	1	0
	PEDIATRIC	21	2	1	2	0	0	0	0	0	0	1	2	0	0	23	2	18	2
	UNDETERMINED MODE	136	12	2	4	0	0	2	5	3	9	4	9	8	23	155	11	112	13
		0	0	0	0	0	0	0	0	0	0	0	0	0	0	0	0	0	0
COUNTY	LACKAWANNA	385	34	19	38	10	28	16	43	13	37	12	26	10	29	465	34	293	35
	LUZERNE	472	42	25	50	22	61	18	49	17	49	17	37	16	46	587	43	359	42
	PIKE	104	9	3	6	3	8	3	8	4	11	13	28	4	11	134	10	97	11
	SUSQUEHANNA	29	3	1	2	1	3	0	0	1	3	0	0	2	6	34	2	19	2
	WAYNE	114	10	2	4	0	0	0	0	0	0	3	7	3	9	122	9	68	8
	WYOMING	24	2	0	0	0	0	0	0	0	0	1	2	0	0	25	2	12	1

* Data may be incomplete due to lag in reporting.
Cumulative are cases diagnosed through December 31, 2014 and reported through March 31, 2015.
Note: Percentages may not add to 100% due to 'rounding' .

Table 12
HIV Disease in Pennsylvania
Characteristics of Cases by Time Interval of Diagnosis

NORTH CENTRAL DISTRICT AIDS COALITION
Bradford, Centre, Clinton, Columbia, Lycoming, Montour, Northumberland
Potter, Snyder, Sullivan, Tioga, and Union Counties

		BEFORE 2009		2009		2010		2011		2012		2013*		2014*		TOTAL TO DEC 31, 2014		CURRENTLY LIVING DEC 31, 2014	
		number	percent	number	percent	number	percent	number	percent	number	percent	number	percent	number	percent	number	percent	number	percent
	TOTAL CASES	1,082	100	32	100	28	100	21	100	28	100	20	100	23	100	1,234	100	791	100
SEX	MALE	808	75	26	81	25	89	19	90	25	89	14	70	20	87	937	76	593	75
	FEMALE	274	25	6	19	3	11	2	10	3	11	6	30	3	13	297	24	198	25
RACE/ETHNICITY	WHITE	541	50	17	53	18	64	9	43	5	18	7	35	7	30	604	49	356	45
	BLACK	361	33	7	22	4	14	6	29	17	61	10	50	10	43	415	34	281	36
	HISPANIC	138	13	5	16	5	18	5	24	4	14	2	10	6	26	165	13	110	14
	ASIAN/PACIFIC	7	1	0	0	0	0	0	0	0	0	0	0	0	0	7	1	7	1
	NATIVE AMERICAN	0	0	0	0	0	0	0	0	0	0	0	0	0	0	0	0	0	0
	MULTIRACE	35	3	3	9	1	4	1	5	2	7	1	5	0	0	43	3	37	5
AGE (YEARS)	< 13	13	1	0	0	1	4	0	0	0	0	0	0	1	4	15	1	12	2
	13 - 19	23	2	0	0	1	4	0	0	2	7	1	5	1	4	28	2	25	3
	20 - 29	238	22	7	22	9	32	4	19	9	32	6	30	6	26	279	23	189	24
	30 - 39	435	40	6	19	5	18	4	19	5	18	4	20	5	22	464	38	278	35
	40 - 49	256	24	16	50	7	25	9	43	7	25	3	15	7	30	305	25	204	26
	Over 49	117	11	3	9	5	18	4	19	5	18	6	30	3	13	143	12	83	10
MODE OF TRANSMISSION	MSM	346	32	12	38	17	61	8	38	13	46	4	20	13	57	413	33	257	32
	IDU	369	34	7	22	1	4	0	0	4	14	2	10	1	4	384	31	212	27
	MSM/IDU	75	7	1	3	2	7	0	0	0	0	1	5	0	0	79	6	42	5
	COAGULATION DISORDER	16	1	0	0	0	0	0	0	0	0	0	0	0	0	16	1	5	1
	HETEROSEXUAL	164	15	12	38	3	11	8	38	6	21	3	15	2	9	198	16	154	19
	TRANSFUSION	7	1	0	0	0	0	0	0	0	0	0	0	0	0	7	1	2	0
	PEDIATRIC	13	1	0	0	1	4	0	0	0	0	0	0	1	4	15	1	12	2
	UNDETERMINED MODE	92	9	0	0	4	14	5	24	5	18	10	50	6	26	122	10	107	14
	COUNTY	BRADFORD	57	5	3	9	1	4	4	19	1	4	0	0	0	0	66	5	39
CENTRE		185	17	16	50	9	32	3	14	7	25	8	40	11	48	239	19	174	22
CLINTON		18	2	0	0	1	4	0	0	3	11	0	0	1	4	23	2	14	2
COLUMBIA		68	6	3	9	5	18	5	24	4	14	1	5	3	13	89	7	63	8
LYCOMING		366	34	7	22	3	11	5	24	6	21	4	20	4	17	395	32	226	29
MONTOUR		24	2	0	0	2	7	0	0	0	0	0	0	0	0	26	2	16	2
NORTHUMBERLAND		124	11	3	9	4	14	0	0	1	4	3	15	2	9	137	11	80	10
POTTER		8	1	0	0	0	0	0	0	0	0	1	5	0	0	9	1	3	0
SNYDER		25	2	0	0	1	4	0	0	0	0	0	0	1	4	27	2	18	2
SULLIVAN		7	1	0	0	0	0	0	0	1	4	0	0	0	0	8	1	6	1
TIOGA		38	4	0	0	1	4	0	0	0	0	0	0	0	0	39	3	21	3
UNION		162	15	0	0	1	4	4	19	5	18	3	15	1	4	176	14	131	17

* Data may be incomplete due to lag in reporting.
Cumulative are cases diagnosed through December 31, 2014 and reported through March 31, 2015.
Note: Percentages may not add to 100% due to 'rounding'.

Table 13
HIV Disease in Pennsylvania
Characteristics of Cases by Time Interval of Diagnosis

SOUTH CENTRAL PENNSYLVANIA AIDS PLANNING COALITION
Adams, Bedford, Blair, Cumberland, Dauphin, Franklin, Fulton, Huntingdon,
Juniata, Lancaster, Lebanon, Mifflin, Perry, and York Counties

		BEFORE 2009		2009		2010		2011		2012		2013*		2014*		TOTAL TO DEC 31, 2014		CURRENTLY LIVING DEC 31, 2014	
		number	percent	number	percent	number	percent	number	percent	number	percent	number	percent			number	percent	number	percent
	TOTAL CASES	4,958	100	159	100	161	100	167	100	134	100	133	100	128	100	5,840	100	3,655	100
SEX	MALE	3,645	74	113	71	116	72	133	80	91	68	103	77	108	84	4,309	74	2,603	71
	FEMALE	1,313	26	46	29	45	28	34	20	43	32	30	23	20	16	1,531	26	1,052	29
RACE/ETHNICITY	WHITE	2,501	50	76	48	67	42	72	43	58	43	70	53	60	47	2,904	50	1,755	48
	BLACK	1,304	26	44	28	51	32	55	33	41	31	40	30	47	37	1,582	27	980	27
	HISPANIC	933	19	33	21	38	24	36	22	26	19	21	16	16	13	1,103	19	733	20
	ASIAN/PACIFIC	9	0	2	1	1	1	2	1	2	1	1	1	1	1	18	0	14	0
	NATIVE AMERICAN	4	0	0	0	0	0	0	0	0	0	0	0	0	0	4	0	1	0
	MULTIRACE	207	4	4	3	4	2	2	1	7	5	1	1	4	3	229	4	172	5
			0		0		0		0		0		0		0		0		0
AGE (YEARS)	< 13	80	2	0	0	0	0	3	2	1	1	1	1	1	1	86	1	51	1
	13 - 19	133	3	8	5	13	8	10	6	3	2	9	7	7	5	183	3	147	4
	20 - 29	1,109	22	33	21	32	20	37	22	31	23	31	23	33	26	1,306	22	886	24
	30 - 39	1,970	40	41	26	49	30	39	23	33	25	30	23	34	27	2,196	38	1,329	36
	40 - 49	1,142	23	43	27	38	24	45	27	43	32	34	26	26	20	1,371	23	846	23
	Over 49	524	11	34	21	29	18	33	20	23	17	28	21	27	21	698	12	396	11
			0		0		0		0		0		0		0		0		0
MODE OF TRANSMISSION	MSM	1,742	35	65	41	63	39	80	48	56	42	70	53	63	49	2,139	37	1,352	37
	IDU	1,397	28	14	9	13	8	12	7	8	6	14	11	9	7	1,467	25	729	20
	MSM/IDU	249	5	2	1	1	1	1	1	2	1	1	1	5	4	261	4	122	3
	COAGULATION DISORDER	55	1	0	0	0	0	0	0	0	0	0	0	0	0	55	1	12	0
	HETEROSEXUAL	1,022	21	60	38	52	32	41	25	24	18	27	20	22	17	1,248	21	935	26
	TRANSFUSION	35	1	0	0	0	0	0	0	0	0	0	0	0	0	35	1	6	0
	PEDIATRIC	80	2	0	0	1	1	3	2	1	1	2	2	1	1	88	2	53	1
	UNDETERMINED MODE	378	8	18	11	31	19	30	18	43	32	19	14	28	22	547	9	446	12
COUNTY	ADAMS	97	2	5	3	4	2	8	5	5	4	1	1	8	6	128	2	78	2
	BEDFORD	29	1	3	2	2	1	1	1	5	4	0	0	1	1	41	1	25	1
	BLAIR	131	3	4	3	2	1	3	2	3	2	3	2	4	3	150	3	81	2
	CUMBERLAND	510	10	16	10	14	9	9	5	9	7	16	12	10	8	584	10	392	11
	DAUPHIN	1,432	29	39	25	40	25	57	34	40	30	33	25	38	30	1,679	29	1,024	28
	FRANKLIN	168	3	10	6	11	7	8	5	4	3	7	5	8	6	216	4	142	4
	FULTON	7	0	0	0	2	1	0	0	0	0	1	1	0	0	10	0	9	0
	HUNTINGDON	105	2	3	2	1	1	0	0	1	1	1	1	0	0	111	2	71	2
	JUNIATA	19	0	2	1	2	1	0	0	1	1	0	0	0	0	24	0	17	0
	LANCASTER	1,156	23	41	26	44	27	39	23	32	24	35	26	28	22	1,375	24	856	23
	LEBANON	195	4	6	4	3	2	7	4	10	7	6	5	6	5	233	4	138	4
	MIFFLIN	31	1	1	1	0	0	1	1	1	1	1	1	0	0	35	1	20	1
	PERRY	41	1	3	2	0	0	1	1	0	0	2	2	2	2	49	1	32	1
	YORK	1,037	21	26	16	36	22	33	20	23	17	27	20	23	18	1,205	21	770	21

* Data may be incomplete due to lag in reporting.
Cumulative are cases diagnosed through December 31, 2014 and reported through March 31, 2015.
Note: Percentages may not add to 100% due to 'rounding'.

Table 14
HIV Disease in Pennsylvania
Characteristics of Cases by Time Interval of Diagnosis

SOUTHWEST PENNSYLVANIA AIDS PLANNING COALITION
Allegheny, Armstrong, Beaver, Butler, Cambria, Fayette, Greene,
Indiana, Somerset, Washington, and Westmoreland Counties

		BEFORE 2009		2009		2010		2011		2012		2013*		2014*		TOTAL TO DEC 31, 2014		CURRENTLY LIVING DEC 31, 2014	
		number	percent	number	percent	number	percent	number	percent	number	percent	number	percent	number	percent	number	percent	number	percent
	TOTAL CASES	5,142	100	172	100	170	100	167	100	176	100	158	100	173	100	6,158	100	3,653	100
SEX	MALE	4,292	83	141	82	155	91	136	81	144	82	136	86	141	82	5,145	84	2,958	81
	FEMALE	850	17	31	18	15	9	31	19	32	18	22	14	32	18	1,013	16	695	19
RACE/ETHNICITY	WHITE	2,946	57	78	45	80	47	76	46	89	51	64	41	84	49	3,417	55	1,859	51
	BLACK	1,841	36	69	40	77	45	77	46	72	41	71	45	75	43	2,282	37	1,433	39
	HISPANIC	149	3	7	4	4	2	4	2	4	2	11	7	3	2	182	3	138	4
	ASIAN/PACIFIC	22	0	1	1	0	0	2	1	4	2	2	1	7	4	38	1	31	1
	NATIVE AMERICAN	2	0	0	0	0	0	0	0	0	0	0	0	0	0	2	0	1	0
	MULTIRACE	182	4	17	10	9	5	8	5	7	4	10	6	4	2	237	4	191	5
			0		0		0		0		0		0		0		0		0
AGE (YEARS)	< 13	32	1	0	0	2	1	0	0	1	1	1	1	0	0	36	1	27	1
	13 - 19	126	2	9	5	11	6	7	4	10	6	5	3	11	6	179	3	148	4
	20 - 29	1,266	25	42	24	52	31	62	37	51	29	52	33	62	36	1,587	26	1,046	29
	30 - 39	1,950	38	37	22	37	22	32	19	41	23	49	31	38	22	2,184	35	1,233	34
	40 - 49	1,237	24	51	30	38	22	31	19	45	26	25	16	29	17	1,456	24	834	23
	Over 49	531	10	33	19	30	18	35	21	28	16	26	16	33	19	716	12	365	10
			0		0		0		0		0		0		0		0		0
MODE OF TRANSMISSION	MSM	2,943	57	92	53	108	64	103	62	109	62	101	64	103	60	3,559	58	2,090	57
	IDU	755	15	16	9	6	4	6	4	2	1	8	5	5	3	798	13	338	9
	MSM/IDU	255	5	4	2	5	3	0	0	1	1	1	1	2	1	268	4	113	3
	COAGULATION DISORDER	64	1	0	0	0	0	0	0	0	0	0	0	0	0	64	1	14	0
	HETEROSEXUAL	756	15	36	21	29	17	31	19	14	8	15	9	12	7	893	15	690	19
	TRANSFUSION	47	1	0	0	0	0	0	0	0	0	0	0	0	0	47	1	8	0
	PEDIATRIC	33	1	0	0	2	1	0	0	1	1	1	1	0	0	37	1	28	1
	UNDETERMINED MODE	289	6	24	14	20	12	27	16	49	28	32	20	51	29	492	8	372	10
COUNTY	ALLEGHENY	3,829	74	126	73	133	78	131	78	125	71	123	78	132	76	4,599	75	2,758	75
	ARMSTRONG	57	1	2	1	0	0	3	2	2	1	0	0	1	1	65	1	33	1
	BEAVER	176	3	5	3	11	6	7	4	6	3	4	3	6	3	215	3	110	3
	BUTLER	100	2	4	2	4	2	7	4	4	2	3	2	5	3	127	2	81	2
	CAMBRIA	187	4	3	2	4	2	3	2	10	6	4	3	6	3	217	4	132	4
	FAYETTE	108	2	9	5	1	1	4	2	6	3	7	4	7	4	142	2	96	3
	GREENE	40	1	1	1	2	1	0	0	2	1	1	1	1	1	47	1	24	1
	INDIANA	59	1	2	1	0	0	2	1	3	2	1	1	0	0	67	1	38	1
	SOMERSET	113	2	7	4	2	1	2	1	2	1	2	1	2	1	130	2	89	2
	WASHINGTON	181	4	6	3	5	3	3	2	7	4	9	6	2	1	213	3	117	3
	WESTMORELAND	292	6	7	4	8	5	5	3	9	5	4	3	11	6	336	5	175	5

* Data may be incomplete due to lag in reporting.
Cumulative are cases diagnosed through December 31, 2014 and reported through March 31, 2015.
Note: Percentages may not add to 100% due to 'rounding'.

Table 15
HIV Disease in Pennsylvania
Characteristics of Cases by Time Interval of Diagnosis

NORTHWEST PENNSYLVANIA RURAL AIDS ALLIANCE
Cameron, Clarion, Clearfield, Crawford, Elk, Erie, Forest, Jefferson,
Lawrence, McKean, Mercer, Venango, and Warren Counties

		BEFORE 2009		2009		2010		2011		2012		2013*		2014*		TOTAL TO DEC 31, 2014		CURRENTLY LIVING DEC 31, 2014	
		number	percent	number	percent	number	percent	number	percent	number	percent	number	percent	number	percent	number	percent	number	percent
	TOTAL CASES	986	100	35	100	38	100	29	100	22	100	25	100	23	100	1,158	100	713	100
SEX	MALE	785	80	27	77	32	84	27	93	16	73	16	64	21	91	924	80	548	77
	FEMALE	201	20	8	23	6	16	2	7	6	27	9	36	2	9	234	20	165	23
RACE/ETHNICITY	WHITE	626	63	23	66	23	61	17	59	9	41	12	48	11	48	721	62	401	56
	BLACK	237	24	8	23	8	21	6	21	11	50	9	36	9	39	288	25	195	27
	HISPANIC	92	9	3	9	5	13	3	10	2	9	2	8	1	4	108	9	83	12
	ASIAN/PACIFIC	6	1	0	0	0	0	0	0	0	0	2	8	0	0	8	1	5	1
	NATIVE AMERICAN	1	0	0	0	0	0	0	0	0	0	0	0	0	0	1	0	1	0
	MULTIRACE	24	2	1	3	2	5	3	10	0	0	0	0	2	9	32	3	28	4
			0		0		0		0		0		0		0		0		0
AGE (YEARS)	< 13	14	1	0	0	1	3	0	0	0	0	0	0	0	0	15	1	12	2
	13 - 19	28	3	1	3	0	0	2	7	2	9	2	8	0	0	35	3	25	4
	20 - 29	258	26	8	23	10	26	9	31	3	14	7	28	10	43	305	26	209	29
	30 - 39	350	35	8	23	14	37	7	24	9	41	5	20	8	35	401	35	232	33
	40 - 49	230	23	13	37	7	18	7	24	2	9	3	12	5	22	267	23	166	23
	Over 49	106	11	5	14	6	16	4	14	6	27	8	32	0	0	135	12	69	10
			0		0		0		0		0		0		0		0		0
MODE OF TRANSMISSION	MSM	410	42	13	37	13	34	21	72	8	36	7	28	15	65	487	42	273	38
	IDU	224	23	2	6	2	5	0	0	3	14	3	12	1	4	235	20	129	18
	MSM/IDU	67	7	1	3	3	8	0	0	0	0	0	0	0	0	71	6	44	6
	COAGULATION DISORDER	15	2	0	0	0	0	0	0	0	0	0	0	0	0	15	1	1	0
	HETEROSEXUAL	167	17	14	40	13	34	6	21	6	27	10	40	3	13	219	19	169	24
	TRANSFUSION	10	1	0	0	0	0	0	0	0	0	0	0	0	0	10	1	0	0
	PEDIATRIC	14	1	0	0	1	3	0	0	0	0	0	0	0	0	15	1	12	2
	UNDETERMINED MODE	79	8	5	14	6	16	2	7	5	23	5	20	4	17	106	9	85	12
COUNTY	CAMERON	0	0	0	0	0	0	0	0	0	0	0	0	0	0	0	0	0	0
	CLARION	20	2	1	3	1	3	2	7	2	9	0	0	0	0	26	2	20	3
	CLEARFIELD	88	9	3	9	5	13	1	3	1	5	1	4	1	4	100	9	67	9
	CRAWFORD	90	9	5	14	1	3	5	17	5	23	0	0	3	13	109	9	68	10
	ELK	9	1	0	0	1	3	0	0	0	0	0	0	1	4	11	1	8	1
	ERIE	434		19		20		10		10		16		11		520		327	45
	FOREST	12		0		1		1		0		0		0		14		13	2
	JEFFERSON	24		0		1		0		0		0		0		25		15	2
	LAWRENCE	80		1		3		4		0		3		6		97		52	7
	MCKEAN	42		1		2		1		2		2		0		50		30	4
	MERCER	112		4		1		4		2		2		1		126		71	10
	VENANGO	44		0		1		1		0		1		0		47		20	3
	WARREN	31		1		1		0		0		0		0		33		22	4

* Data may be incomplete due to lag in reporting

Cumulative are cases diagnosed through December 31, 2014 and reported through March 31, 2015.

Note: Percentages may not add to 100% due to 'rounding' .

Figure 5

Confirmed Cases of Pediatric HIV Disease and Perinatal HIV Exposure by Year of Diagnosis, 2000 - 2014

