

ANNUAL HIV SURVEILLANCE SUMMARY REPORT

COMMONWEALTH OF PENNSYLVANIA

December 2012



Contact Information & Contributors

The Annual HIV Surveillance Summary is prepared by the
Bureau of Epidemiology
Pennsylvania Department of Health

Bureau of Epidemiology
Division of Infectious Disease Epidemiology
HIV Surveillance & Epidemiology Section

Atmaram Nambiar, MD, MPH, Director, Division of Infectious Disease Epidemiology
Godwin Obiri, DrPH, MS, Director, HIV Surveillance & Epidemiology
Martin Ngokion, MD, MPH, Epidemiologist
Michelle Clarke, BS, Epidemiology Program Specialist
Michael Allen, MPH, Epidemiology Research Associate
Bonnie Krampe, MPH, Epidemiology Research Associate
Ikechukwu Onukogu, MS, Epidemiology Program Specialist

The HIV Surveillance & Epidemiology Section gratefully acknowledges the support of community health districts, county/municipal health departments, physicians, hospitals and laboratories reporting HIV cases in Pennsylvania. This project is funded by a grant award from the Centers for Disease Control and Prevention.

Requests for reprints, updates and inquiries may be sent to:

ATTN: 'Annual HIV Summary Report' Requests
Pennsylvania Department of Health
Bureau of Epidemiology
HIV Surveillance & Epidemiology Section
Health & Welfare Building, Room 933
625 Forster Street
Harrisburg, PA 17120

The data provided in the tables, figures and maps are based on HIV reports received through March 31, 2013. Expanded analysis of data presented in the Annual HIV Surveillance Summary and other HIV data may be requested by sending e-mail to c-hivepi@state.pa.us or by telephone/fax to our office at 717-783-0481 (tel) or 717-772-6975 (fax).

The Pennsylvania Department of Health is an equal opportunity provider of grants, contracts, services and employment

Suggested Citation of Data Source:	Annual HIV Surveillance Summary
Bureau of Epidemiology, PA Dept. of Health	
Publication Number: HD0234P	

A Special Note for the Readers of Pennsylvania HIV Surveillance Report Explanation for Changes in the Annual HIV Surveillance Summary Report

This note is intended to inform all readers of changes we have introduced in the Pennsylvania Annual Human Immunodeficiency Virus (HIV) Surveillance Summary Report. The format of this annual summary has changed from the format used in previous years to reflect some changes in the way HIV is viewed. This report considers HIV infection as a single disease entity with varying degrees of severity rather than using separate disease classifications for HIV infection without AIDS and acquired immunodeficiency syndrome (AIDS).

Since the inception of the annual summary report, HIV has been depicted as two conditions, HIV infection without AIDS and AIDS, respectively. This artificial separation served a purpose at the time. However, with advances in the clinical and epidemiologic experiences with HIV infection, HIV disease is now viewed as a spectrum condition; progressing from early stage of infection to full-blown symptomatic infection.

In 2002, Pennsylvania promulgated public health regulations revising the reportability of adult and pediatric AIDS, adding HIV, CD4 count (<200 cells/uL or <14%), detectable viral load and perinatal exposure to HIV. The new regulations took effect on October 18, 2002 and active surveillance was conducted retrospectively to January 1, 2000. Since that time, HIV reporting has been ongoing statewide with the exception of the county of Philadelphia where it did not become reportable by name until October 2005.

In addition, the US Centers for Disease Control and Prevention (CDC) has recently made changes to the HIV case definition, taking into account advances in testing and detection. This new case definition recognizes HIV infection as a disease with varying degrees of severity. For adults and adolescents (i.e., persons aged ≥ 13 years), the HIV infection classification system and the surveillance case definitions for HIV infection and AIDS were revised by the CDC in 2008 and combined into a single case definition for HIV infection. In addition, the HIV infection case definition for children aged <13 years and the AIDS case definition for children aged 18 months to <13 years were also revised. No changes were made to the HIV infection classification system, the 24 AIDS-defining conditions for children aged <13 years, or the AIDS case definition for children aged <18 months. These case definitions are intended for public health surveillance only and not as a guide for clinical diagnosis. CDC and the Council of State and Territorial Epidemiologists recommended that all states and territories conduct case surveillance of HIV infection and AIDS using the 2008 surveillance case definitions.

The data in previous years tables and figures were constructed separately for HIV infection without AIDS and AIDS. Most tables and figures now have HIV infection without AIDS combined with AIDS under one identity called HIV disease. Consequently, any comparison of this report to previous years should take into account these differences.

Question or comment can be directed to

Dr. Godwin Obiri, Director, HIV Surveillance & Epidemiology Section
Bureau of Epidemiology
717/783-0481 or e-mail: gobiri@pa.gov

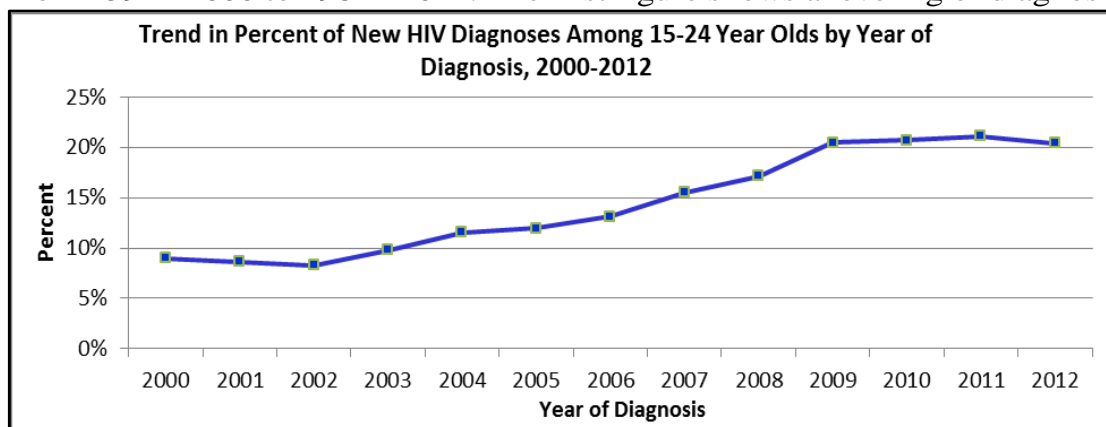
Table of Contents

	PAGE
2013 HIV Surveillance Spotlight	4
Figure 1 Annual Diagnoses of AIDS and HIV infection Without AIDS, 1980-2012	5
Figure 2 Number of Cases of AIDS and HIV Infection Without AIDS by Current Vital Status and Year of Diagnosis	6
Table 1 Annual Diagnoses of HIV Disease for Adult/Adolescent and Pediatric by Year of Diagnosis	7
Table 2 Number of Cases of HIV Disease by Sex, Race/Ethnicity, and Year of Diagnosis, 2007-2012	8
Table 3 Number of Cases of HIV Disease by Age and Year of Diagnosis, 2007-2012	9
Table 4 Number of Cases of HIV Disease by Mode of Transmission and Year of Diagnosis, 2007-2012	10
Table 5 Number of HIV Disease by Mode of Transmission and Race/Ethnicity	11
Table 6 Cumulative Cases of HIV Disease by Vital Status and County of Residence, 2007-2012	12
Table 7 Annual Diagnoses of HIV Disease by County of Residence, 2009-2012	13
Figure 3 New Diagnoses of HIV Disease by County, 2011	14
Figure 4 Rate of New HIV Disease Diagnosed by County, 2011	15
Table 8 Characteristics of HIV Disease Cases by Time Interval of Diagnosis, 2007-2012	16
<i>Characteristics of HIV Disease For 7 Geographic Areas</i>	
Table 9 Characteristics of HIV Disease Cases by Time Interval of Diagnosis, AIDS Activities Coordinating Office	17
Table 10 Characteristics of HIV Disease Cases by Time Interval of Diagnosis, AIDSNET	18
Table 11 Characteristics of HIV Disease Cases by Time Interval of Diagnosis, Northeast Region	19
Table 12 Characteristics of HIV Disease Cases by Time Interval of Diagnosis, Northcentral Region	20
Table 13 Characteristics of HIV Disease Cases by Time Interval of Diagnosis, Southcentral Region	21
Table 14 Characteristics of HIV Disease Cases by Time Interval of Diagnosis, Southwest Region	22
Table 15 Characteristics of HIV Disease Cases by Time Interval of Diagnosis, Northwest Region	23
Figure 5 Confirmed Cases of Pediatric HIV Disease and Perinatal HIV Exposure, 2000-2012	24

HIV Surveillance Spotlight

The HIV Surveillance Spotlight is a new addition to the Annual HIV Surveillance Summary Report. It is intended to highlight a specific area of significance in HIV disease burden in Pennsylvania. For this edition of the Annual Report we will showcase the trend in new HIV disease diagnoses among individuals 15-24 years old in Pennsylvania.

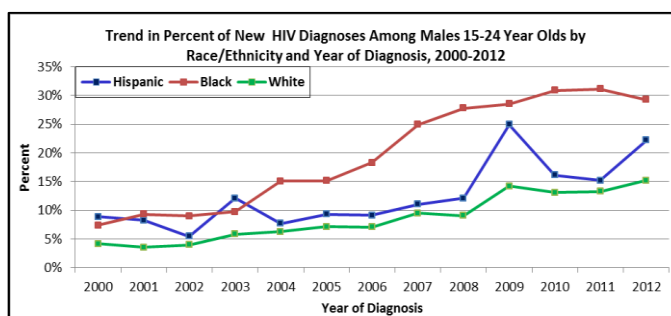
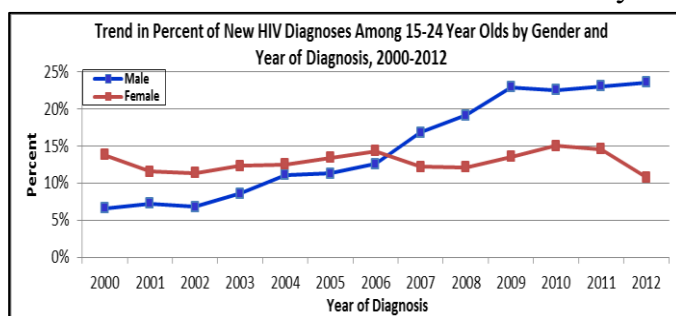
We examined all HIV cases with diagnosis date beginning in 2000 through 2012. All cases ages 15-24 years old were compared to the total cases diagnosed in each year to establish age-group specific disease burden. The absolute number of new diagnoses in this age group has increased from 159 in 2000 to 298 in 2012. The first figure shows a leveling of diagnosis through 2002



followed by gradual rise in cases diagnosed with HIV disease. This rising trend reached its peak in 2009 and was followed with a general leveling in proportion of

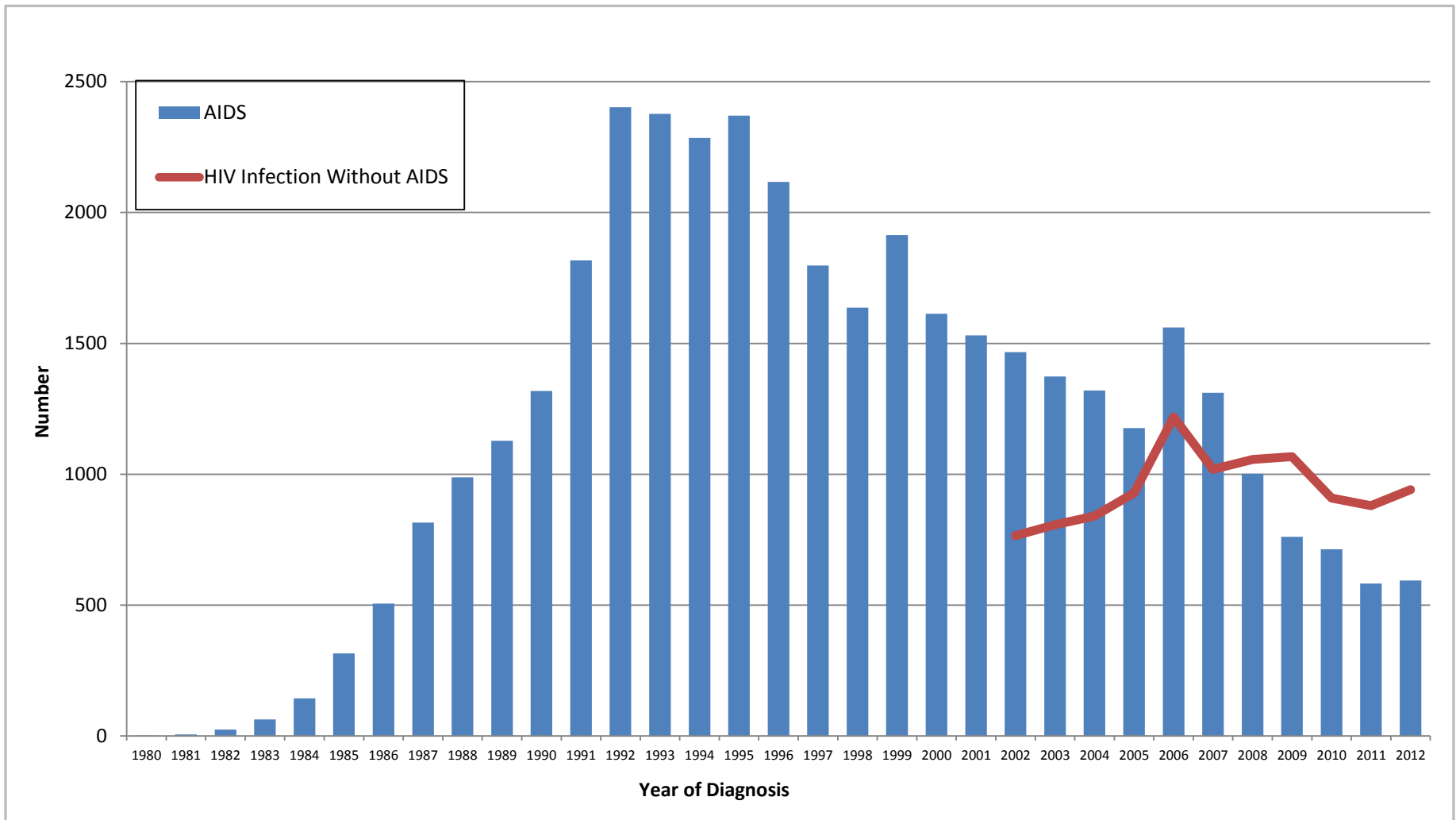
cases for the remaining three year.

When stratified by gender, the rate was found to be increasing among males while decreasing among females. While increases were seen in all male racial groups, African American males had the most dramatic increases followed by Hispanic males.



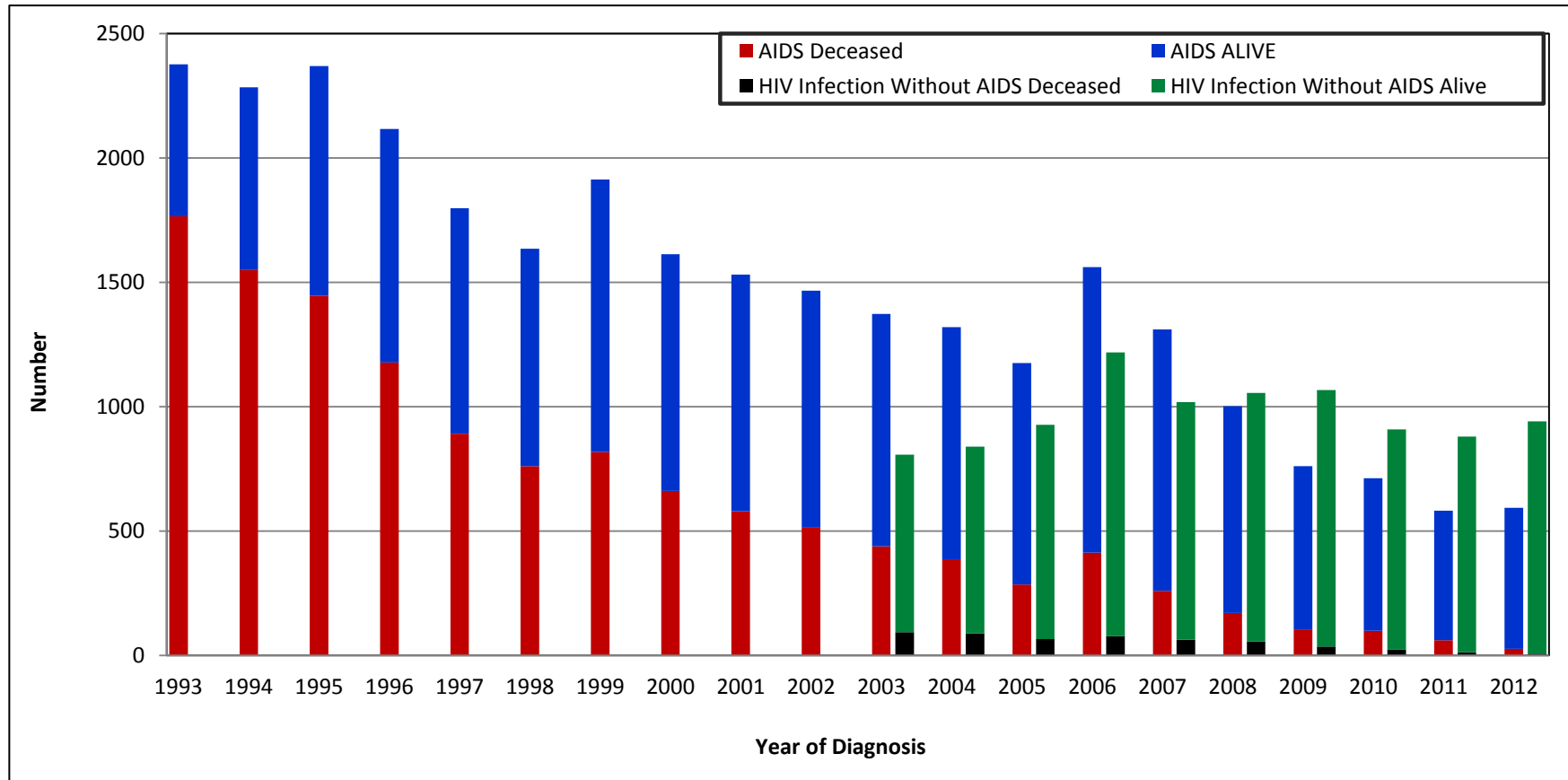
This finding of increasing number of diagnoses of HIV disease among adolescents and young adults is consistent with trends in this age group at the national level. Young males are experiencing high rates of HIV transmission. More targeted education, counseling, and testing for this age group will help to reverse this trend and improve public health.

Figure 1
 Annual Diagnoses of AIDS and HIV Infection Without AIDS by Year of Diagnosis in Pennsylvania
 1980-2012



Note: HIV Infection Without AIDS became reportable in PA in October 2002

Figure 2
 Number of Cases of AIDS and HIV Infection Without AIDS in Pennsylvania
 Current Vital Status by Year of Diagnosis
 1993-2012



Note: HIV Infection Without AIDS became reportable in PA in October 2002

TABLE 1
ANNUAL DIAGNOSES OF HIV DISEASE IN PENNSYLVANIA
AMONG ADULT/ADOLESCENT AND PEDIATRIC CASES
BY YEAR OF DIAGNOSIS, 1980-2012

YEAR OF DIAGNOSIS	ADULT/ADOLESCENT	PEDIATRIC*	TOTAL
1980	1	0	1
1981	8	1	9
1982	49	3	52
1983	107	5	112
1984	254	4	258
1985	777	28	805
1986	1,079	16	1,095
1987	1,547	16	1,563
1988	1,908	23	1,931
1989	2,434	24	2,458
1990	2,946	40	2,986
1991	2,963	35	2,998
1992	2,854	66	2,920
1993	2,348	69	2,417
1994	2,223	39	2,262
1995	2,141	44	2,185
1996	2,035	36	2,071
1997	1,882	28	1,910
1998	1,803	33	1,836
1999	1,728	32	1,760
2000	1,751	17	1,768
2001	1,780	20	1,800
2002^	2,112	16	2,128
2003	2,117	20	2,137
2004	2,002	10	2,012
2005	2,023	14	2,037
2006	2,435	13	2,448
2007	1,918	10	1,928
2008	1,819	14	1,833
2009	1,695	5	1,700
2010	1,481	10	1,491
2011	1,376	6	1,382
2012	1,453	8	1,461
TOTAL	55,049	705	55,754

^ HIV Infection Without AIDS became a reportable condition in Pennsylvania in October 2002

*Cases diagnosed with HIV disease before age 13

Table 2
 Number of Cases of HIV Disease Diagnosed in Pennsylvania
 Sex and Race/Ethnicity by Year of Diagnosis, 2007-2012.

	2007		2008		2009		2010		2011*		2012*		1980-2012 TOTAL TO DATE	
	number	percent	number	percent	number	percent	number	percent	number	percent	number	percent	number	percent
TOTAL MALE	1,379	100	1,306	100	1,256	100	1,132	100	1,073	100	1,099	100	41,832	100
WHITE (NON-HISPANIC)	464	34	386	30	394	31	382	34	339	32	342	31	15,954	38
BLACK (NON-HISPANIC)	610	44	645	49	551	44	528	47	533	50	561	51	19,301	46
HISPANIC	226	16	215	16	249	20	180	16	171	16	162	15	5,297	13
ASIAN/PACIFIC	20	1	11	1	14	1	12	1	7	1	15	1	222	1
NATIVE AMERICAN	0	0	1	0	1	0	2	0	0	0	2	0	29	0
MULTIPLE RACE	59	4	48	4	47	4	28	2	23	2	17	2	1,029	2
TOTAL FEMALE	549	100	527	100	444	100	359	100	309	100	362	100	13,922	100
WHITE (NON-HISPANIC)	114	21	102	19	78	18	72	20	68	22	68	19	3,031	22
BLACK (NON-HISPANIC)	335	61	303	57	246	55	212	59	204	66	227	63	8,182	59
HISPANIC	71	13	86	16	101	23	65	18	28	9	53	15	2,172	16
ASIAN/PACIFIC	5	1	4	1	3	1	3	1	5	2	6	2	61	0
NATIVE AMERICAN	0	0	0	0	1	0	1	0	0	0	1	0	18	0
MULTIPLE RACE	24	4	32	6	15	3	6	2	4	1	7	2	458	3
TOTAL	1,928	100	1,833	100	1,700	100	1,491	100	1,382	100	1,461	100	55,754	100

*Reduced numbers may be partially due to reporting delays.

Note: Percentages may not add to 100% due to 'rounding'.

Table 3
 Number of Cases of HIV Disease Diagnosed in Pennsylvania
 Age by Year of Diagnosis, 2007-2012

	2007		2008		2009		2010		2011*		2012*		1980-2012 TOTAL TO DATE	
	number	percent	number	percent	number	percent	number	percent	number	percent	number	percent	number	percent
ALL AGES	1,928	100	1,833	100	1,700	100	1,491	100	1,382	100	1,461	100	55,754	100
0-12	10	1	14	1	5	0	10	1	6	0	8	1	705	1
13-19	107	6	103	6	82	5	81	5	71	5	66	5	1,645	3
20-29	437	23	426	23	477	28	418	28	404	29	452	31	13,162	24
30-39	466	24	404	22	388	23	358	24	311	23	302	21	19,890	36
40-49	557	29	531	29	462	27	352	24	329	24	338	23	13,573	24
OVER 49	351	18	355	19	286	17	272	18	261	19	295	20	6,779	12

*Reduced numbers may be partially due to reporting delays.

Note: Percentages may not add to 100% due to 'rounding'.

Table 4
 Number of Cases of HIV Disease in Pennsylvania
 Mode of Transmission by Year of Diagnosis, 2007-2012.

	2007		2008		2009		2010		2011*		2012*		TOTAL TO DATE 1980-2012	
	number	percent	number	percent	number	percent	number	percent	number	percent	number	percent	number	percent
ALL MODES	1,928	100	1,833	100	1,700	100	1,491	100	1,382	100	1,461	100	55,754	100
MEN SEX W/MEN (MSM)	616	32	628	34	671	39	642	43	615	45	647	44	20,461	37
INJECTING DRUG USE (IDU)	259	13	224	12	177	10	124	8	96	7	96	7	14,812	27
MSM & IDU	47	2	42	2	30	2	33	2	20	1	29	2	2,486	4
COAGULATION DISORDER	1	0	0	0	0	0	0	0	0	0	0	0	267	0
HETEROSEXUAL CONTACT	893	46	830	45	539	32	564	38	531	38	493	34	13,932	25
TRANSFUSION RECEIVED	0	0	0	0	0	0	0	0	0	0	0	0	223	0
UNDETERMINED/OTHER	101	5	92	5	276	16	116	8	113	8	187	13	2,855	5
ALL PEDIATRIC MODES**	11	1	17	1	7	0	12	1	7	1	9	1	718	1

*Reduced numbers may be partially due to reporting delays.

**Includes adult cases that had pediatric modes of transmission (e.g., perinatal exposure)

Note: Percentages may not add to 100% due to 'rounding'.

Table 5
Number of Cases of HIV Disease in Pennsylvania
Mode of Transmission by Race/Ethnicity
1980-1990, 1991-2000 and 2001-2012

	WHITE NON-HISPANIC		BLACK NON-HISPANIC		HISPANIC		ASIAN/PACIFIC		NATIVE AMERICAN		MULTIPLE RACE		ALL RACES	
	number	percent	number	percent	number	percent	number	percent	number	percent	number	percent	number	percent
1980-1990														
ALL MODES	5,512	100	4,290	100	1,304	100	25	100	5	100	134	100	11,270	100
MEN SEX W/MEN (MSM)	3,777	69	1,778	41	226	17	19	76	2	40	53	40	5,855	52
INJECTING DRUG USE (IDU)	700	13	1,559	36	785	60	1	4	2	40	50	37	3,097	27
MSM & IDU	320	6	412	10	86	7	1	4	0	0	23	17	842	7
COAGULATION DISORDER	194	4	10	0	6	0	0	0	0	0	0	0	210	2
HETEROSEXUAL CONTACT	235	4	340	8	145	11	2	8	0	0	6	4	728	6
TRANSFUSION RECEIVED	118	2	18	0	3	0	1	4	0	0	0	0	140	1
ALL PEDIATRIC MODES	57	1	70	2	30	2	0	0	1	20	2	1	160	1
UNDETERMINED/OTHER	111	2	103	2	23	2	1	4	0	0	0	0	238	2
1991-2000														
ALL MODES	6,889	100	11,777	100	2,880	100	70	100	16	100	495	100	22,127	100
MEN SEX W/MEN (MSM)	3,732	54	2,860	24	393	14	34	49	8	50	134	27	7,161	32
INJECTING DRUG USE (IDU)	1,510	22	4,849	41	1,405	49	7	10	2	13	184	37	7,957	36
MSM & IDU	309	4	612	5	122	4	0	0	0	0	45	9	1,088	5
COAGULATION DISORDER	42	1	4	0	1	0	0	0	0	0	1	0	48	0
HETEROSEXUAL CONTACT	933	14	2,862	24	743	26	17	24	4	25	106	21	4,665	21
TRANSFUSION RECEIVED	43	1	21	0	4	0	5	7	0	0	1	0	74	0
ALL PEDIATRIC MODES	55	1	253	2	80	3	2	3	0	0	9	2	399	2
UNDETERMINED/OTHER	265	4	316	3	132	5	5	7	2	13	15	3	735	3
2001-2012*														
ALL MODES	6,584	100	11,416	100	3,285	100	188	100	26	100	858	100	22,357	100
MEN SEX W/MEN (MSM)	3,335	51	3,054	27	710	22	71	38	11	42	264	31	7,445	33
INJECTING DRUG USE (IDU)	872	13	1,855	16	853	26	11	6	2	8	165	19	3,758	17
MSM & IDU	218	3	207	2	89	3	3	2	1	4	38	4	556	2
COAGULATION DISORDER	6	0	1	0	2	0	0	0	0	0	0	0	9	0
HETEROSEXUAL CONTACT	1,521	23	5,370	47	1,242	38	77	41	12	46	317	37	8,539	38
TRANSFUSION RECEIVED	4	0	4	0	1	0	0	0	0	0	0	0	9	0
ALL PEDIATRIC MODES	20	0	93	1	37	1	4	2	0	0	5	1	159	1
UNDETERMINED/OTHER	608	9	832	7	351	11	22	12	0	0	69	8	1,882	8

* The more recent pattern, 2001-2012 is better reflection of current distribution of cases than the earlier periods, 1980-1990 and 1991-2000.

Note: Percentages may not add to 100% due to 'rounding'.

Table 6

Cumulative Cases for HIV Disease in Pennsylvania
Mortality Status and County of Residence, 1980-2012

COUNTY	ALIVE	REPORTED DEAD	CUMULATIVE CASES
PHILADELPHIA	17,862	12,030	29,892
ALLEGHENY	2,533	1,792	4,325
DELAWARE	1,549	1,143	2,692
MONTGOMERY	1,017	692	1,709
DAUPHIN	966	635	1,601
BERKS	939	557	1,496
LEHIGH	961	456	1,417
LANCASTER	810	505	1,315
BUCKS	745	513	1,258
YORK	730	422	1,152
CHESTER	498	419	917
NORTHAMPTON	404	273	677
CUMBERLAND	378	182	560
LUZERNE	332	218	550
ERIE	305	191	496
LACKAWANNA	277	163	440
MONROE	256	169	425
LYCOMING	226	162	388
WESTMORELAND	161	161	322
LEBANON	130	90	220
CENTRE	155	64	219
SCHUYLKILL	134	80	214
WASHINGTON	113	94	207
CAMBRIA	122	84	206
BEAVER	111	93	204
FRANKLIN	128	73	201
UNION	126	45	171
BLAIR	78	65	143
NORTHUMBERLAND	73	57	130
FAYETTE	81	45	126
MERCER	69	55	124
SOMERSET	84	40	124
BUTLER	77	46	123
WAYNE	66	56	122
ADAMS	66	48	114

COUNTY	PRESUMED ALIVE	REPORTED DEAD	CUMULATIVE CASES
PIKE	77	36	113
CARBON	73	36	109
HUNTINGDON	70	38	108
CRAWFORD	65	40	105
CLEARFIELD	67	28	95
LAWRENCE	45	43	88
COLUMBIA	57	25	82
INDIANA	36	29	65
BRADFORD	36	27	63
ARMSTRONG	32	30	62
MCKEAN	28	20	48
GREENE	23	23	46
PERRY	28	18	46
VENANGO	19	27	46
BEDFORD	24	15	39
TIOGA	21	18	39
WARREN	25	11	36
MIFFLIN	19	15	34
SUSQUEHANNA	16	15	31
JEFFERSON	15	11	26
MONTOUR	16	10	26
SNYDER	17	9	26
CLARION	20	5	25
WYOMING	12	13	25
JUNIATA	16	6	22
CLINTON	12	8	20
FOREST	11	2	13
ELK	7	4	11
SULLIVAN	6	3	9
FULTON	7	1	8
POTTER	2	6	8
CAMERON	0	0	0
STATE TOTAL	33,464	22,290	55,754

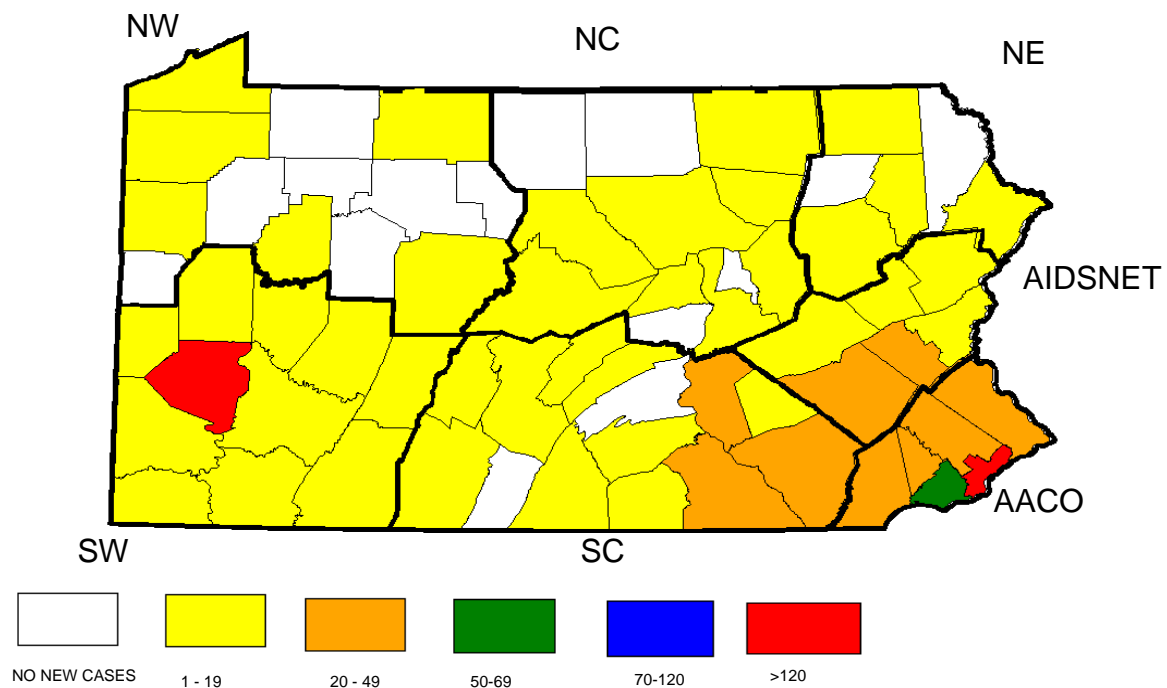
Table 7
Annual Diagnoses of HIV Disease in Pennsylvania
By County of Residence
2009-2012

COUNTY	2009	2010	2011	2012	2011 RATE PER 100,000*
ADAMS	5	4	8	4	7.90
ALLEGHENY	126	133	128	128	10.00
ARMSTRONG	2	0	3	2	4.40
BEAVER	5	11	7	6	4.10
BEDFORD	3	2	0	4	0.00
BERKS	38	34	26	36	6.30
BLAIR	5	2	3	3	2.40
BRADFORD	2	1	2	2	3.20
BUCKS	39	34	43	43	6.90
BUTLER	4	4	7	4	3.80
CAMBRIA	3	4	3	9	2.10
CAMERON	0	0	0	0	0.00
CARBON	6	8	5	7	7.70
CENTRE	15	9	3	7	1.90
CHESTER	23	21	30	32	6.00
CLARION	1	1	2	2	5.00
CLEARFIELD	3	5	1	1	1.20
CLINTON	0	1	0	3	0.00
COLUMBIA	3	5	5	4	7.40
CRAWFORD	5	1	5	6	5.60
CUMBERLAND	16	14	9	8	3.80
DAUPHIN	39	40	56	41	21.00
DELAWARE	108	87	82	91	15.00
ELK	0	1	0	0	0.00
ERIE	18	20	10	10	3.60
FAYETTE	9	1	4	5	2.90
FOREST	0	1	1	0	13.00
FRANKLIN	10	11	8	3	5.30
FULTON	0	2	0	0	0.00
GREENE	1	2	0	2	0.00
HUNTINGDON	3	1	0	1	0.00
INDIANA	2	0	2	3	2.30
JEFFERSON	0	1	0	0	0.00
JUNIATA	2	2	0	1	0.00
LACKAWANNA	19	10	15	15	7.00

COUNTY	2009	2010	2011	2012	2011 RATE PER 100,000*
LANCASTER	41	44	39	29	7.50
LAWRENCE	1	3	4	0	4.40
LEBANON	6	3	7	9	5.20
LEHIGH	46	39	50	45	14.00
LUZERNE	24	22	17	17	5.30
LYCOMING	7	3	4	6	3.40
MCKEAN	1	2	1	2	2.30
MERCER	4	1	4	2	3.40
MIFFLIN	1	0	1	1	2.10
MONROE	14	15	10	12	5.90
MONTGOMERY	60	66	41	43	5.10
MONTOUR	0	2	0	0	0.00
NORTHAMPTON	8	22	7	4	2.40
NORTHUMBERLAND	3	4	0	1	0.00
PERRY	3	0	1	0	2.20
PHILADELPHIA	905	728	671	746	44.00
PIKE	3	4	3	3	5.20
POTTER	0	0	0	0	0.00
SCHUYLKILL	8	5	4	7	2.70
SNYDER	0	1	0	0	0.00
SOMERSET	7	2	2	2	2.60
SULLIVAN	0	0	0	1	0.00
SUSQUEHANNA	1	1	0	1	0.00
TIOGA	0	1	0	0	0.00
UNION	0	1	5	5	11.00
VENANGO	0	1	1	0	1.80
WARREN	1	1	0	0	0.00
WASHINGTON	6	6	3	6	1.40
WAYNE	2	0	0	0	0.00
WESTMORELAND	7	8	5	9	1.40
WYOMING	0	0	0	0	0.00
YORK	26	33	34	27	7.80
STATE TOTAL	1,700	1,491	1,382	1,461	11.00

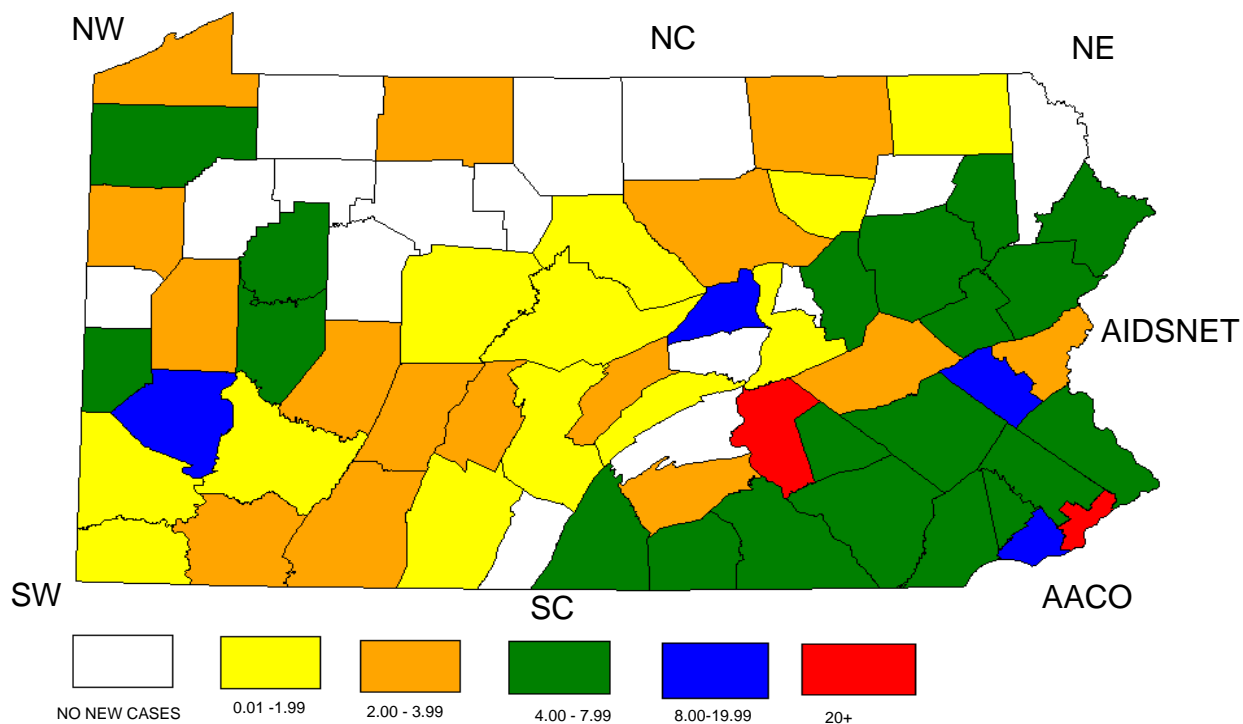
*Rates based on 2011 estimated population

Figure 3
 New HIV Disease Diagnosed in Pennsylvania
 Number of Cases for Each County, 2011



AACO=AIDS Activities Coordinating Office
 AIDSNET = AIDSNET
 NE = Northeastern Regional AIDS Planning Coalition
 NC = North Central District AIDS Coalition
 SC = South Central Pennsylvania AIDS Planning Coalition
 SW = Southwest Pennsylvania AIDS Planning Coalition
 NW = Northwest Pennsylvania Rural AIDS Alliance

Figure 4
HIV Disease Diagnosed In Pennsylvania
Rate* (per 100,000) for Each County, 2011



AACO=AIDS Activities Coordinating Office
AIDSNET = AIDSNET
NE = Northeastern Regional AIDS Planning Coalition
NC = North Central District AIDS Coalition
SC = South Central Pennsylvania AIDS Planning Coalition
SW = Southwest Pennsylvania AIDS Planning Coalition
NW = Northwest Pennsylvania Rural AIDS Alliance

* Rates are based on 2010 estimated population

Table 8
HIV Disease in Pennsylvania
Characteristics of Cases by Interval of Diagnosis, 2007-2012.

		BEFORE 2007		2007		2008		2009		2010		2011		2012		TOTAL TO DEC 31, 2012*		CURRENTLY LIVING DEC 31, 2012	
		number	percent	number	percent	number	percent	number	percent	number	percent	number	percent	number	percent	number	percent	number	percent
	TOTAL CASES	45,959	100	1,928	100	1,833	100	1,700	100	1,491	100	1,382	100	1,461	100	55,754	100	33,464	100
SEX	MALE	34,587	75	1,379	72	1,306	71	1,256	74	1,132	76	1,073	78	1,099	75	41,832	75	23,934	72
	FEMALE	11,372	25	549	28	527	29	444	26	359	24	309	22	362	25	13,922	25	9,530	28
RACE/ETHNICITY	WHITE	16,176	35	578	30	488	27	472	28	454	30	407	29	410	28	18,985	34	10,479	31
	BLACK	22,528	49	945	49	948	52	797	47	740	50	737	53	788	54	27,483	49	16,419	49
	HISPANIC	5,862	13	297	15	301	16	350	21	245	16	199	14	215	15	7,469	13	5,132	15
	ASIAN/PACIFIC	178	0	25	1	15	1	17	1	15	1	12	1	21	1	283	1	223	1
	NATIVE AMERICAN	38	0	0	0	1	0	2	0	3	0	0	0	3	0	47	0	35	0
	MULTIRACE	1,177	3	83	4	80	4	62	4	34	2	27	2	24	2	1,487	3	1,176	4
AGE (YEARS)	< 13	652	1	10	1	14	1	5	0	10	1	6	0	8	1	705	1	506	2
	13 - 19	1,135	2	107	6	103	6	82	5	81	5	71	5	66	5	1,645	3	1,355	4
	20 - 29	10,548	23	437	23	426	23	477	28	418	28	404	29	452	31	13,162	24	8,905	27
	30 - 39	17,661	38	466	24	404	22	388	23	358	24	311	23	302	21	19,890	36	11,317	34
	40 - 49	11,004	24	557	29	531	29	462	27	352	24	329	24	338	23	13,573	24	7,930	24
	Over 49	4,959	11	351	18	355	19	286	17	272	18	261	19	295	20	6,779	12	3,451	10
MODE OF TRANSMISSION	MEN SEX W/MEN (MSM)	16,642	36	616	32	628	34	671	39	642	43	615	45	647	44	20,461	37	11,775	35
	INJECTING DRUG (IDU)	13,836	30	259	13	224	12	177	10	124	8	96	7	96	7	14,812	27	7,239	22
	MSM & IDU	2,285	5	47	2	42	2	30	2	33	2	20	1	29	2	2,486	4	1,222	4
	COAGULATION DISORDER	266	1	1	0	0	0	0	0	0	0	0	0	0	0	267	0	71	0
	HETEROSEXUAL CONTACT	10,082	22	893	46	830	45	539	32	564	38	531	38	493	34	13,932	25	10,537	31
	TRANSFUSION	223	0	0	0	0	0	0	0	0	0	0	0	0	0	223	0	34	0
	ALL PEDIATRIC	655	1	11	1	17	1	7	0	12	1	7	1	9	1	718	1	518	2
	UNDETERMINED/OTHER	1,970	4	101	5	92	5	276	16	116	8	113	8	187	13	2,855	5	2,068	6
COALITION AREA	AIDS ACTIVITIES COORDINATING OFFICE	30,049	65	1,294	67	1,232	67	1,135	67	936	63	867	63	955	65	36,468	65	21,671	65
	AIDSNET	3,570	8	153	8	159	9	120	7	123	8	102	7	111	8	4,338	8	2,767	8
	NORTHEASTERN REGIONAL HIV PLANNING COALITION	1,030	2	49	3	45	2	49	3	37	2	35	3	36	2	1,281	2	780	2
	NORTH CENTRAL DISTRICT AIDS COALITION	999	2	46	2	30	2	30	2	28	2	19	1	29	2	1,181	2	747	2
	SOUTH CENTRAL PENNSYLVANIA AIDS PLANNING COALITION	4,639	10	164	9	145	8	160	9	158	11	166	12	131	9	5,563	10	3,450	10
	SOUTHWEST PENNSYLVANIA AIDS PLANNING COALITION	4,744	10	189	10	194	11	172	10	171	11	164	12	176	12	5,810	10	3,373	10
	NORTHWEST PENNSYLVANIA RURAL AIDS ALLIANCE	928	2	33	2	28	2	34	2	38	3	29	2	23	2	1,113	2	676	2

* Includes cases diagnosed prior to 2002

Cummulative are cases diagnosed through December 31, 2012 and reported through March 31, 2013.

Note: Percentages may not add to 100% due to 'rounding'.

Table 9
HIV Disease in Pennsylvania
Characteristics of Cases by Time Interval of Diagnosis

AIDS Activities Coordinating Office
Bucks, Delaware, Chester, Montgomery, and Philadelphia Counties

		BEFORE 2007		2007		2008		2009		2010		2011		2012		TOTAL TO DEC 31, 2012*		CURRENTLY LIVING DEC 31, 2012	
		number	percent	number	percent	number	percent	number	percent	number	percent	number	percent	number	percent	number	percent	number	percent
	TOTAL CASES	30,049		1,294		1,232		1,135		936		867		955		36,468		21,671	
SEX	MALE	22,480	75	923	71	865	70	839	74	685	73	661	76	716	75	27,169	75	15,346	71
	FEMALE	7,569	25	371	29	367	30	296	26	251	27	206	24	239	25	9,299	25	6,325	29
RACE/ETHNICITY	WHITE	7,884	26	288	22	243	20	215	19	192	21	185	21	191	20	9,198	25	4,973	23
	BLACK	18,265	61	772	60	739	60	629	55	563	60	555	64	611	64	22,134	61	13,027	60
	HISPANIC	3,139	10	166	13	182	15	245	22	148	16	112	13	127	13	4,119	11	2,878	13
	ASIAN/PACIFIC	130	0	20	2	10	1	14	1	14	1	8	1	14	1	210	1	168	1
	NATIVE AMERICAN	26	0	0	0	1	0	2	0	2	0	0	0	3	0	34	0	28	0
	MULTIRACE	605	2	48	4	57	5	30	3	17	2	7	1	9	1	773	2	597	3
AGE (YEARS)	< 13	435	1	5	0	11	1	4	0	5	1	3	0	5	1	468	1	344	2
	13 - 19	756	3	84	6	72	6	58	5	52	6	50	6	41	4	1,113	3	928	4
	20 - 29	6,825	23	314	24	312	25	360	32	276	29	263	30	322	34	8,672	24	5,931	27
	30 - 39	11,366	38	300	23	259	21	255	22	224	24	196	23	191	20	12,791	35	7,184	33
	40 - 49	7,266	24	361	28	339	28	280	25	209	22	203	23	212	22	8,870	24	5,060	23
	Over 49	3,401	11	230	18	239	19	178	16	170	18	152	18	184	19	4,554	12	2,224	10
MODE OF TRANSMISSION	MSM	10,370	35	402	31	409	33	433	38	379	40	355	41	403	42	12,751	35	7,251	33
	IDU	9,620	32	196	15	154	13	114	10	86	9	64	7	64	7	10,298	28	4,952	23
	MSM/IDU	1,477	5	34	3	23	2	22	2	18	2	15	2	24	3	1,613	4	796	4
	COAGULATION DISORDER	64	0	0	0	0	0	0	0	0	0	0	0	0	0	64	0	18	0
	HETEROSEXUAL	7,364	25	625	48	591	48	340	30	408	44	402	46	407	43	10,137	28	7,633	35
	TRANSFUSION	100	0	0	0	0	0	0	0	0	0	0	0	0	0	100	0	12	0
	PEDIATRIC	435	1	5	0	11	1	4	0	6	1	4	0	5	1	470	1	346	2
	UNDETERMINED MODE	619	2	32	2	44	4	222	20	39	4	27	3	52	5	1,035	3	663	3
COUNTY	BUCKS	1,009	3	36	3	54	4	39	3	34	4	43	5	43	5	1,258	3	745	3
	CHESTER	748	2	38	3	25	2	23	2	21	2	30	3	32	3	917	3	498	2
	DELAWARE	2,121	7	99	8	104	8	108	10	87	9	82	9	91	10	2,692	7	1,549	7
	MONTGOMERY	1,355	5	67	5	77	6	60	5	66	7	41	5	43	5	1,709	5	1,017	5
	PHILADELPHIA	24,816	83	1,054	81	972	79	905	80	728	78	671	77	746	78	29,892	82	17,862	82

* Includes cases diagnosed prior to 2002

Cummulative are cases diagnosed through December 31, 2011 and reported through March 31, 2012.

Note: Percentages may not add to 100% due to 'rounding'.

Table 10
HIV Disease in Pennsylvania
Characteristics of Cases by Time Interval of Diagnosis

AIDSNET
Berks, Carbon, Lehigh, Monroe, Northampton, and Schuylkill Counties

		BEFORE 2007		2007		2008		2009		2010		2011		2012		TOTAL TO DEC 31, 2012*		CURRENTLY LIVING DEC 31, 2012	
		number	percent	number	percent	number	percent	number	percent	number	percent	number	percent	number	percent	number	percent	number	percent
	TOTAL CASES	3,570		153		159		120		123		102		111		4,338		2,767	
SEX	MALE	2,421	68	104	68	100	63	78	65	94	76	75	74	76	68	2,948	68	1,791	65
	FEMALE	1,149	32	49	32	59	37	42	35	29	24	27	26	35	32	1,390	32	976	35
RACE/ETHNICITY	WHITE	1,403	39	52	34	57	36	42	35	53	43	30	29	37	33	1,674	39	945	34
	BLACK	626	18	31	20	29	18	28	23	29	24	32	31	26	23	801	18	551	20
	HISPANIC	1,403	39	62	41	64	40	45	38	39	32	34	33	46	41	1,693	39	1,122	41
	ASIAN/PACIFIC	9	0	1	1	0	0	0	0	0	0	0	0	1	1	11	0	7	0
	NATIVE AMERICAN	2	0	0	0	0	0	0	0	0	0	0	0	0	0	2	0	2	0
	MULTIRACE	127	4	7	5	9	6	5	4	2	2	6	6	1	1	157	4	140	5
		0		0		0		0		0		0		0		0		0	
AGE (YEARS)	< 13	62	2	3	2	2	1	1	1	1	1	0	0	1	1	70	2	52	2
	13 - 19	88	2	4	3	6	4	3	3	3	2	1	1	6	5	111	3	87	3
	20 - 29	821	23	31	20	25	16	20	17	34	28	25	25	28	25	984	23	675	24
	30 - 39	1,416	40	43	28	47	30	29	24	23	19	22	22	17	15	1,597	37	940	34
	40 - 49	848	24	41	27	53	33	41	34	36	29	24	24	26	23	1,069	25	689	25
	Over 49	335	9	31	20	26	16	26	22	26	21	30	29	33	30	507	12	324	12
MODE OF TRANSMISSION	MSM	848	24	31	20	39	25	40	33	53	43	40	39	40	36	1,091	25	655	24
	IDU	1,246	35	22	14	20	13	18	15	13	11	11	11	13	12	1,343	31	730	26
	MSM/IDU	138	4	3	2	5	3	0	0	3	2	3	3	2	2	154	4	90	3
	COAGULATION DISORDER	40	1	0	0	0	0	0	0	0	0	0	0	0	0	40	1	15	1
	HETEROSEXUAL	762	21	79	52	74	47	57	48	39	32	32	31	30	27	1,073	25	805	29
	TRANSFUSION	20	1	0	0	0	0	0	0	0	0	0	0	0	0	20	0	5	0
	PEDIATRIC	65	2	3	2	4	3	2	2	1	1	0	0	2	2	77	2	58	2
	UNDETERMINED MODE	451	13	15	10	17	11	3	3	14	11	16	16	24	22	540	12	409	15
COUNTY	BERKS	1,258	35	55	36	49	31	38	32	34	28	26	25	36	32	1,496	34	939	34
	CARBON	78	2	1	1	4	3	6	5	8	7	5	5	7	6	109	3	73	3
	LEHIGH	1,111	31	62	41	64	40	46	38	39	32	50	49	45	41	1,417	33	961	35
	MONROE	347	10	10	7	17	11	14	12	15	12	10	10	12	11	425	10	256	9
	NORTHAMPTON	600	17	19	12	17	11	8	7	22	18	7	7	4	4	677	16	404	15
	SCHUYLKILL	176	5	6	4	8	5	8	7	5	4	4	4	7	6	214	5	134	5

* Includes cases diagnosed prior to 2002

Cummulative are cases diagnosed through December 31, 2011 and reported through March 31, 2012.

Note: Percentages may not add to 100% due to 'rounding'.

Table 11
HIV Disease in Pennsylvania
Characteristics of Cases by Time Interval of Diagnosis
NORTHEASTERN REGIONAL HIV PLANNING COALITION
Lackawanna, Luzerne, Pike, Susquehanna, Wayne, and Wyoming Counties

		BEFORE 2007		2007		2008		2009		2010		2011		2012		TOTAL TO DEC 31, 2012*		CURRENTLY LIVING DEC 31, 2012	
		number	percent	number	percent	number	percent	number	percent	number	percent	number	percent	number	percent	number	percent	number	percent
	TOTAL CASES	1,030		49		45		49		37		35		36		1,281		780	
SEX	MALE	807	78	32	65	36	80	34	69	27	73	28	80	28	78	992	77	569	73
	FEMALE	223	22	17	35	9	20	15	31	10	27	7	20	8	22	289	23	211	27
RACE/ETHNICITY	WHITE	661	64	26	53	20	44	19	39	22	59	21	60	22	61	791	62	438	56
	BLACK	197	19	10	20	14	31	13	27	7	19	8	23	8	22	257	20	171	22
	HISPANIC	124	12	9	18	8	18	14	29	7	19	6	17	6	17	174	14	129	17
	ASIAN/PACIFIC	3	0	0	0	0	0	1	2	0	0	0	0	0	0	4	0	4	1
	NATIVE AMERICAN	3	0	0	0	0	0	0	0	1	3	0	0	0	0	4	0	2	0
	MULTIRACE	42	4	4	8	3	7	2	4	0	0	0	0	0	0	51	4	36	5
AGE (YEARS)	< 13	0		0		0		0		0		0		0		0		0	
	13 - 19	21	2	0	0	0	0	0	0	0	0	0	0	0	0	21	2	15	2
	20 - 29	20	2	2	4	5	11	3	6	1	3	1	3	1	3	33	3	29	4
	30 - 39	206	20	11	22	7	16	9	18	6	16	6	17	8	22	253	20	169	22
	40 - 49	387	38	9	18	8	18	12	24	8	22	11	31	5	14	440	34	252	32
	Over 49	293	28	16	33	15	33	18	37	16	43	12	34	8	22	378	30	226	29
		103	10	11	22	10	22	7	14	6	16	5	14	14	39	156	12	89	11
MODE OF TRANSMISSION	MSM	340	33	11	22	17	38	16	33	15	41	13	37	18	50	430	34	245	31
	IDU	311	30	4	8	4	9	7	14	3	8	4	11	3	8	336	26	159	20
	MSM/IDU	58	6	1	2	3	7	0	0	1	3	1	3	0	0	64	5	31	4
	COAGULATION DISORDER	13	1	0	0	0	0	0	0	0	0	0	0	0	0	13	1	5	1
	HETEROSEXUAL	143	14	32	65	20	44	23	47	18	49	15	43	9	25	260	20	213	27
	TRANSFUSION	5	0	0	0	0	0	0	0	0	0	0	0	0	0	5	0	1	0
	PEDIATRIC	21	2	0	0	1	2	1	2	0	0	0	0	0	0	23	2	17	2
	UNDETERMINED MODE	139	13	1	2	0	0	2	4	0	0	2	6	17	150	12	109	14	
COUNTY	LACKAWANNA	351	34	13	27	17	38	19	39	10	27	15	43	15	42	440	34	277	36
	LUZERNE	423	41	28	57	19	42	24	49	22	59	17	49	17	47	550	43	332	43
	PIKE	91	9	4	8	5	11	3	6	4	11	3	9	3	8	113	9	77	10
	SUSQUEHANNA	27	3	1	2	0	0	1	2	1	3	0	0	1	3	31	2	16	2
	WAYNE	114	11	3	6	3	7	2	4	0	0	0	0	0	0	122	10	66	8
	WYOMING	24	2	0	0	1	2	0	0	0	0	0	0	0	0	25	2	12	2

* Includes cases diagnosed prior to 2002

Cummulative are cases diagnosed through December 31, 2011 and reported through March 31, 2012.

Note: Percentages may not add to 100% due to 'rounding'.

Table 12
HIV Disease in Pennsylvania
Characteristics of Cases by Time Interval of Diagnosis

NORTH CENTRAL DISTRICT AIDS COALITION
Bradford, Centre, Clinton, Columbia, Lycoming, Montour, Northumberland

		BEFORE 2007		2007		2008		2009		2010		2011		2012		TOTAL TO DEC 31, 2012*		CURRENTLY LIVING DEC 31, 2012	
		number	percent	number	percent	number	percent	number	percent	number	percent	number	percent	number	percent	number	percent	number	percent
	TOTAL CASES	999	100	46	100	30	100	30	100	28	100	19	100	29	100	1,181	100	747	100
SEX	MALE	748	75	34	74	22	73	24	80	25	89	17	89	26	90	896	76	558	75
	FEMALE	251	25	12	26	8	27	6	20	3	11	2	11	3	10	285	24	189	25
RACE/ETHNICITY	WHITE	504	50	28	61	11	37	16	53	18	64	7	37	6	21	590	50	346	46
	BLACK	338	34	12	26	8	27	7	23	4	14	6	32	17	59	392	33	263	35
	HISPANIC	124	12	4	9	8	27	4	13	5	18	5	26	4	14	154	13	99	13
	ASIAN/PACIFIC	4	0	0	0	3	10	0	0	0	0	0	0	0	0	7	1	7	1
	NATIVE AMERICAN	0	0	0	0	0	0	0	0	0	0	0	0	0	0	0	0	0	0
	MULTIRACE	29	3	2	4	0	0	3	10	1	4	1	5	2	7	38	3	32	4
AGE (YEARS)	< 13	11	1	1	2	0	0	0	0	1	4	0	0	0	0	13	1	10	1
	13 - 19	19	2	1	2	2	7	0	0	1	4	0	0	2	7	25	2	22	3
	20 - 29	228	23	6	13	6	20	7	23	9	32	4	21	9	31	269	23	179	24
	30 - 39	410	41	11	24	7	23	5	17	5	18	5	26	5	17	448	38	267	36
	40 - 49	235	24	12	26	9	30	15	50	7	25	7	37	7	24	292	25	193	26
	Over 49	96	10	15	33	6	20	3	10	5	18	3	16	6	21	134	11	76	10
MODE OF TRANSMISSION	MSM	324	32	15	33	6	20	12	40	17	61	7	37	13	45	394	33	240	32
	IDU	357	36	5	11	4	13	6	20	1	4	1	5	4	14	378	32	210	28
	MSM/IDU	71	7	1	2	2	7	1	3	2	7	0	0	0	0	77	7	42	6
	COAGULATION DISORDER	16	2	0	0	0	0	0	0	0	0	0	0	0	0	16	1	5	1
	HETEROSEXUAL	126	13	21	46	18	60	11	37	3	11	7	37	7	24	193	16	150	20
	TRANSFUSION	7	1	0	0	0	0	0	0	0	0	0	0	0	0	7	1	2	0
	PEDIATRIC	11	1	1	2	0	0	0	0	1	4	0	0	0	0	13	1	10	1
	UNDETERMINED MODE	87	9	3	7	0	0	0	0	4	14	4	21	5	17	103	9	88	12
COUNTY	BRADFORD	53	5	2	4	1	3	2	7	1	4	2	11	2	7	63	5	36	5
	CENTRE	162	16	10	22	13	43	15	50	9	32	3	16	7	24	219	19	155	21
	CLINTON	15	2	1	2	0	0	0	0	1	4	0	0	3	10	20	2	12	2
	COLUMBIA	63	6	2	4	0	0	3	10	5	18	5	26	4	14	82	7	57	8
	LYCOMING	342	34	17	37	9	30	7	23	3	11	4	21	6	21	388	33	226	30
	MONTOUR	21	2	3	7	0	0	0	0	2	7	0	0	0	0	26	2	16	2
	NORTHUMBERLAND	113	11	6	13	3	10	3	10	4	14	0	0	1	3	130	11	73	10
	POTTER	8	1	0	0	0	0	0	0	0	0	0	0	0	0	8	1	2	0
	SNYDER	24	2	0	0	1	3	0	0	1	4	0	0	0	0	26	2	17	2
	SULLIVAN	7	1	0	0	1	3	0	0	0	0	0	0	1	3	9	1	6	1
	TIOGA	36	4	1	2	1	3	0	0	1	4	0	0	0	0	39	3	21	3
	UNION	155	16	4	9	1	3	0	0	1	4	5	26	5	17	171	14	126	17

* Includes cases diagnosed prior to 2002

Cummulative are cases diagnosed through December 31, 2011 and reported through March 31, 2012.

Note: Percentages may not add to 100% due to 'rounding'.

Table 13
HIV Disease in Pennsylvania
Characteristics of Cases by Time Interval of Diagnosis

SOUTH CENTRAL PENNSYLVANIA AIDS PLANNING COALITION
Adams, Bedford, Blair, Cumberland, Dauphin, Franklin, Fulton, Huntingdon,
Juniata, Lancaster, Lebanon, Mifflin, Perry, and York Counties

		BEFORE 2007		2007		2008		2009		2010		2011		2012		TOTAL TO DEC 31, 2012*		CURRENTLY LIVING DEC 31, 2012	
		number	percent	number	percent	number	percent	number	percent	number	percent	number	percent	number	percent	number	percent	number	percent
	TOTAL CASES	4,639		164		145		160		158		166		131		5,563		3,450	
SEX	MALE	3,424	74	112	68	99	68	112	70	114	72	132	80	91	69	4,084	73	2,431	70
	FEMALE	1,215	26	52	32	46	32	48	30	44	28	34	20	40	31	1,479	27	1,019	30
RACE/ETHNICITY	WHITE	2,369	51	67	41	63	43	77	48	66	42	72	43	56	43	2,770	50	1,654	48
	BLACK	1,204	26	45	27	53	37	44	28	51	32	55	33	40	31	1,492	27	912	26
	HISPANIC	861	19	43	26	27	19	33	21	37	23	35	21	26	20	1,062	19	704	20
	ASIAN/PACIFIC	8	0	0	0	1	1	2	1	1	1	2	1	2	2	16	0	12	0
	NATIVE AMERICAN	4	0	0	0	0	0	0	0	0	0	0	0	0	0	4	0	1	0
	MULTIRACE	193	4	9	5	1	1	4	3	3	2	2	1	7	5	219	4	167	5
		0		0		0		0		0		0		0		0		0	
AGE (YEARS)	< 13	77	2	0	0	1	1	0	0	0	0	3	2	1	1	82	1	46	1
	13 - 19	123	3	4	2	6	4	9	6	13	8	10	6	3	2	168	3	133	4
	20 - 29	1,058	23	24	15	22	15	32	20	32	20	37	22	31	24	1,236	22	829	24
	30 - 39	1,886	41	49	30	35	24	41	26	47	30	39	23	34	26	2,131	38	1,289	37
	40 - 49	1,036	22	57	35	45	31	44	28	37	23	45	27	39	30	1,303	23	800	23
	Over 49	459	10	30	18	36	25	34	21	29	18	32	19	23	18	643	12	353	10
MODE OF TRANSMISSION	MSM	1,645	35	50	30	41	28	65	41	60	38	78	47	53	40	1,992	36	1,226	36
	IDU	1,360	29	18	11	16	11	14	9	13	8	10	6	6	5	1,437	26	721	21
	MSM/IDU	236	5	3	2	4	3	2	1	1	1	1	1	2	2	249	4	115	3
	COAGULATION DISORDER	55	1	0	0	0	0	0	0	0	0	0	0	0	0	55	1	13	0
	HETEROSEXUAL	889	19	73	45	63	43	60	38	53	34	39	23	20	15	1,197	22	901	26
	TRANSFUSION	34	1	0	0	0	0	0	0	0	0	0	0	0	0	34	1	6	0
	PEDIATRIC	77	2	0	0	1	1	0	0	1	1	3	2	1	1	83	1	47	1
	UNDETERMINED MODE	343	7	20	12	20	14	19	12	30	19	35	21	49	37	516	9	421	12
COUNTY	ADAMS	86	2	4	2	3	2	5	3	4	3	8	5	4	3	114	2	66	2
	BEDFORD	29	1	1	1	0	0	3	2	2	1	0	0	4	3	39	1	24	1
	BLAIR	123	3	5	3	2	1	5	3	2	1	3	2	3	2	143	3	78	2
	CUMBERLAND	492	11	14	9	7	5	16	10	14	9	9	5	8	6	560	10	378	11
	DAUPHIN	1,339	29	46	28	40	28	39	24	40	25	56	34	41	31	1,601	29	966	28
	FRANKLIN	160	3	3	2	6	4	10	6	11	7	8	5	3	2	201	4	128	4
	FULTON	6	0	0	0	0	0	0	0	2	1	0	0	0	0	8	0	7	0
	HUNTINGDON	100	2	2	1	1	1	3	2	1	1	0	0	1	1	108	2	70	2
	JUNIATA	16	0	0	0	1	1	2	1	2	1	0	0	1	1	22	0	16	0
	LANCASTER	1,095	24	31	19	36	25	41	26	44	28	39	23	29	22	1,315	24	810	23
	LEBANON	179	4	9	5	7	5	6	4	3	2	7	4	9	7	220	4	130	4
	MIFFLIN	30	1	0	0	1	1	1	1	0	0	1	1	1	1	34	1	19	1
	PERRY	41	1	1	1	0	0	3	2	0	0	1	1	0	0	46	1	28	1
	YORK	943	20	48	29	41	28	26	16	33	21	34	20	27	21	1,152	21	730	21

* Includes cases diagnosed prior to 2002

Cumulative are cases diagnosed through December 31, 2011 and reported through March 31, 2012.

Note: Percentages may not add to 100% due to 'rounding'.

Table 14
HIV Disease in Pennsylvania
Characteristics of Cases by Time Interval of Diagnosis

SOUTHWEST PENNSYLVANIA AIDS PLANNING COALITION
Allegheny, Armstrong, Beaver, Butler, Cambria, Fayette, Greene,
Indiana, Somerset, Washington, and Westmoreland Counties

		BEFORE 2007		2007		2008		2009		2010		2011		2012		TOTAL TO DEC 31, 2012*		CURRENTLY LIVING DEC 31, 2012	
		number	percent	number	percent	number	percent	number	percent	number	percent	number	percent	number	percent	number	percent	number	percent
	TOTAL CASES	4,744		189		194		172		171		164		176		5,810		3,373	
SEX	MALE	3,966	84	146	77	163	84	142	83	155	91	133	81	147	84	4,852	84	2,719	81
	FEMALE	778	16	43	23	31	16	30	17	16	9	31	19	29	16	958	16	654	19
RACE/ETHNICITY	WHITE	2,769	58	95	50	74	38	80	47	79	46	75	46	90	51	3,262	56	1,740	52
	BLACK	1,670	35	68	36	102	53	69	40	78	46	75	46	73	41	2,135	37	1,313	39
	HISPANIC	127	3	11	6	7	4	6	3	4	2	4	2	4	2	163	3	119	4
	ASIAN/PACIFIC	18	0	3	2	1	1	0	0	0	0	2	1	4	2	28	0	21	1
	NATIVE AMERICAN	2	0	0	0	0	0	0	0	0	0	0	0	0	0	2	0	1	0
	MULTIRACE	158	3	12	6	10	5	17	10	10	6	8	5	5	3	220	4	179	5
		0		0		0		0		0		0		0		0		0	
AGE (YEARS)	< 13	32	1	1	1	0	0	0	0	2	1	0	0	1	1	36	1	27	1
	13 - 19	103	2	11	6	11	6	8	5	11	6	7	4	11	6	162	3	131	4
	20 - 29	1,171	25	42	22	46	24	42	24	51	30	60	37	51	29	1,463	25	933	28
	30 - 39	1,860	39	46	24	41	21	38	22	37	22	31	19	40	23	2,093	36	1,161	34
	40 - 49	1,112	23	59	31	63	32	51	30	40	23	31	19	44	25	1,400	24	799	24
	Over 49	466	10	30	16	33	17	33	19	30	18	35	21	29	16	656	11	322	10
MODE OF TRANSMISSION	MSM	2,729	58	94	50	106	55	92	53	105	61	101	62	113	64	3,340	57	1,906	57
	IDU	724	15	11	6	21	11	16	9	6	4	6	4	2	1	786	14	336	10
	MSM/IDU	240	5	5	3	3	2	4	2	5	3	0	0	1	1	258	4	104	3
	COAGULATION DISORDER	63	1	1	0	0	0	0	0	0	0	0	0	0	0	64	1	14	0
	HETEROSEXUAL	652	14	51	27	54	28	35	20	31	18	30	18	13	7	866	15	676	20
	TRANSFUSION	47	1	0	0	0	0	0	0	0	0	0	0	0	0	47	1	8	0
	PEDIATRIC	32	1	2	1	0	0	0	0	2	1	0	0	1	1	37	1	28	1
	UNDETERMINED MODE	257	5	25	13	10	5	25	15	22	13	27	16	46	26	412	7	301	9
COUNTY	ALLEGHENY	3,511	74	147	78	152	78	126	73	133	78	128	78	128	73	4,325	74	2,533	75
	ARMSTRONG	55	1	0	0	0	0	2	1	0	0	3	2	2	1	62	1	32	1
	BEAVER	167	4	5	3	3	2	5	3	11	6	7	4	6	3	204	4	111	3
	BUTLER	96	2	4	2	4	2	4	2	4	2	7	4	4	2	123	2	77	2
	CAMBRIA	172	4	10	5	5	3	3	2	4	2	3	2	9	5	206	4	122	4
	FAYETTE	97	2	3	2	7	4	9	5	1	1	4	2	5	3	126	2	81	2
	GREENE	39	1	1	1	1	1	1	1	2	1	0	0	2	1	46	1	23	1
	INDIANA	54	1	2	1	2	1	2	1	0	0	2	1	3	2	65	1	36	1
	SOMERSET	103	2	3	2	5	3	7	4	2	1	2	1	2	1	124	2	84	2
	WASHINGTON	178	4	3	2	5	3	6	3	6	4	3	2	6	3	207	4	113	3
	WESTMORELAND	272	6	11	6	10	5	7	4	8	5	5	3	9	5	322	6	161	5

* Includes cases diagnosed prior to 2002

Cummulative are cases diagnosed through December 31, 2011 and reported through March 31, 2012.

Note: Percentages may not add to 100% due to 'rounding'.

Table 15
HIV Disease in Pennsylvania
Characteristics of Cases by Time Interval of Diagnosis
NORTHWEST PENNSYLVANIA RURAL AIDS ALLIANCE
Cameron, Clarion, Clearfield, Crawford, Elk, Erie, Forest, Jefferson,
Lawrence, McKean, Mercer, Venango, and Warren Counties

		BEFORE 2007		2007		2008		2009		2010		2011		2012		TOTAL TO DEC 31, 2012*		CURRENTLY LIVING DEC 31, 2012	
		number	percent	number	percent	number	percent	number	percent	number	percent	number	percent	number	percent	number	percent	number	percent
	TOTAL CASES	928		33		28		34		38		29		23		1,113		676	
SEX	MALE	741	80	28	85	21	75	27	79	32	84	27	93	15	65	891	80	520	77
	FEMALE	187	20	5	15	7	25	7	21	6	16	2	7	8	35	222	20	156	23
RACE/ETHNICITY	WHITE	586	63	22	67	20	71	23	68	24	63	17	59	8	35	700	63	383	57
	BLACK	228	25	7	21	3	11	7	21	8	21	6	21	13	57	272	24	182	27
	HISPANIC	84	9	2	6	5	18	3	9	5	13	3	10	2	9	104	9	81	12
	ASIAN/PACIFIC	6	1	1	3	0	0	0	0	0	0	0	0	0	0	7	1	4	1
	NATIVE AMERICAN	1	0	0	0	0	0	0	0	0	0	0	0	0	0	1	0	1	0
	MULTIRACE	23	2	1	3	0	0	1	3	1	3	3	10	0	0	29	3	25	4
		0		0		0		0		0		0		0		0		0	
AGE (YEARS)	< 13	14	2	0	0	0	0	0	0	1	3	0	0	0	0	15	1	12	2
	13 - 19	26	3	1	3	1	4	1	3	0	0	2	7	2	9	33	3	25	4
	20 - 29	239	26	9	27	8	29	7	21	10	26	9	31	3	13	285	26	189	28
	30 - 39	336	36	8	24	7	25	8	24	14	37	7	24	10	43	390	35	224	33
	40 - 49	214	23	11	33	7	25	13	38	7	18	7	24	2	9	261	23	163	24
	Over 49	99	11	4	12	5	18	5	15	6	16	4	14	6	26	129	12	63	9
MODE OF TRANSMISSION	MSM	386	42	13	39	10	36	13	38	13	34	21	72	7	30	463	42	252	37
	IDU	218	23	3	9	5	18	2	6	2	5	0	0	4	17	234	21	131	19
	MSM/IDU	65	7	0	0	2	7	1	3	3	8	0	0	0	0	71	6	44	7
	COAGULATION DISORDER	15	2	0	0	0	0	0	0	0	0	0	0	0	0	15	1	1	0
	HETEROSEXUAL	146	16	12	36	10	36	13	38	12	32	6	21	7	30	206	19	159	24
	TRANSFUSION	10	1	0	0	0	0	0	0	0	0	0	0	0	0	10	1	0	0
	PEDIATRIC	14	2	0	0	0	0	0	0	1	3	0	0	0	0	15	1	12	2
	UNDETERMINED MODE	74	8	5	15	1	4	5	15	7	18	2	7	5	22	99	9	77	11
COUNTY	CAMERON	0	0	0	0	0	0	0	0	0	0	0	0	0	0	0	0	0	0
	CLARION	18	2	1	3	0	0	1	3	1	3	2	7	2	9	25	2	20	3
	CLEARFIELD	79	9	2	6	4	14	3	9	5	13	1	3	1	4	95	9	67	10
	CRAWFORD	81	9	2	6	5	18	5	15	1	3	5	17	6	26	105	9	65	10
	ELK	9	1	0	0	1	4	0	0	1	3	0	0	0	0	11	1	7	1
	ERIE	417	45	13	39	8	29	18	53	20	53	10	34	10	43	496	45	305	45
	FOREST	10	1	0	0	1	4	0	0	1	3	1	3	0	0	13	1	11	2
	JEFFERSON	23	2	1	3	1	4	0	0	1	3	0	0	0	0	26	2	15	2
	LAWRENCE	68	7	9	27	3	11	1	3	3	8	4	14	0	0	88	8	45	7
	MCKEAN	42	5	0	0	0	0	1	3	2	5	1	3	2	9	48	4	28	4
	MERCER	108	12	3	9	2	7	4	12	1	3	4	14	2	9	124	11	69	10
	VENANGO	42	5	1	3	1	4	0	0	1	3	1	3	0	0	46	4	19	3
	WARREN	31	3	1	3	2	7	1	3	1	3	0	0	0	0	36	3	25	4

* Includes cases diagnosed prior to 2002

Cumulative are cases diagnosed through December 31, 2011 and reported through March 31, 2012.

Note: Percentages may not add to 100% due to 'rounding' .

Figure 5

Confirmed Cases of Pediatric HIV Disease and Perinatal HIV Exposure by Year of Diagnosis, 2000 - 2012

