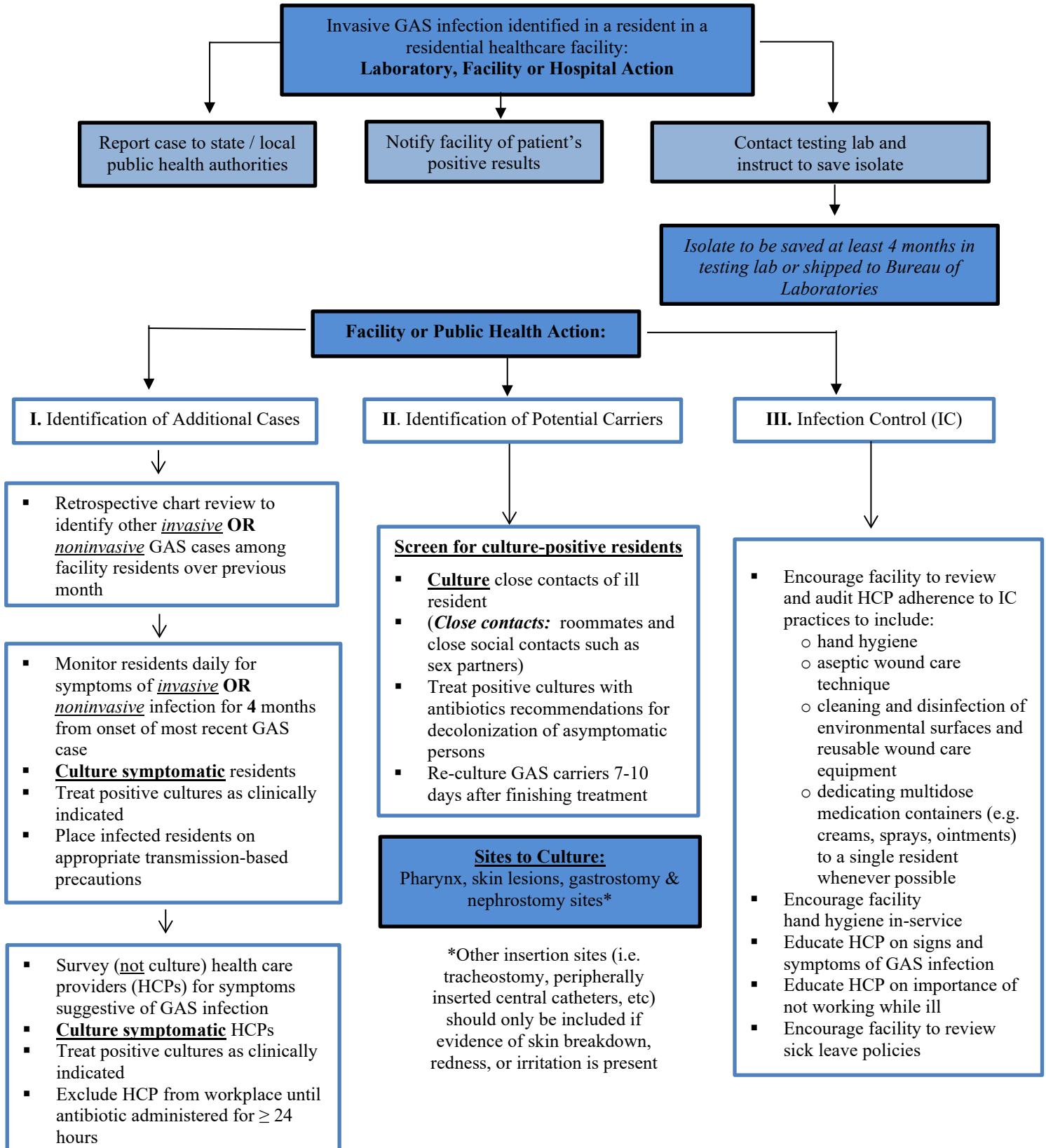




Investigation of One Culture-Confirmed Invasive Group A Streptococcus (GAS) Infection

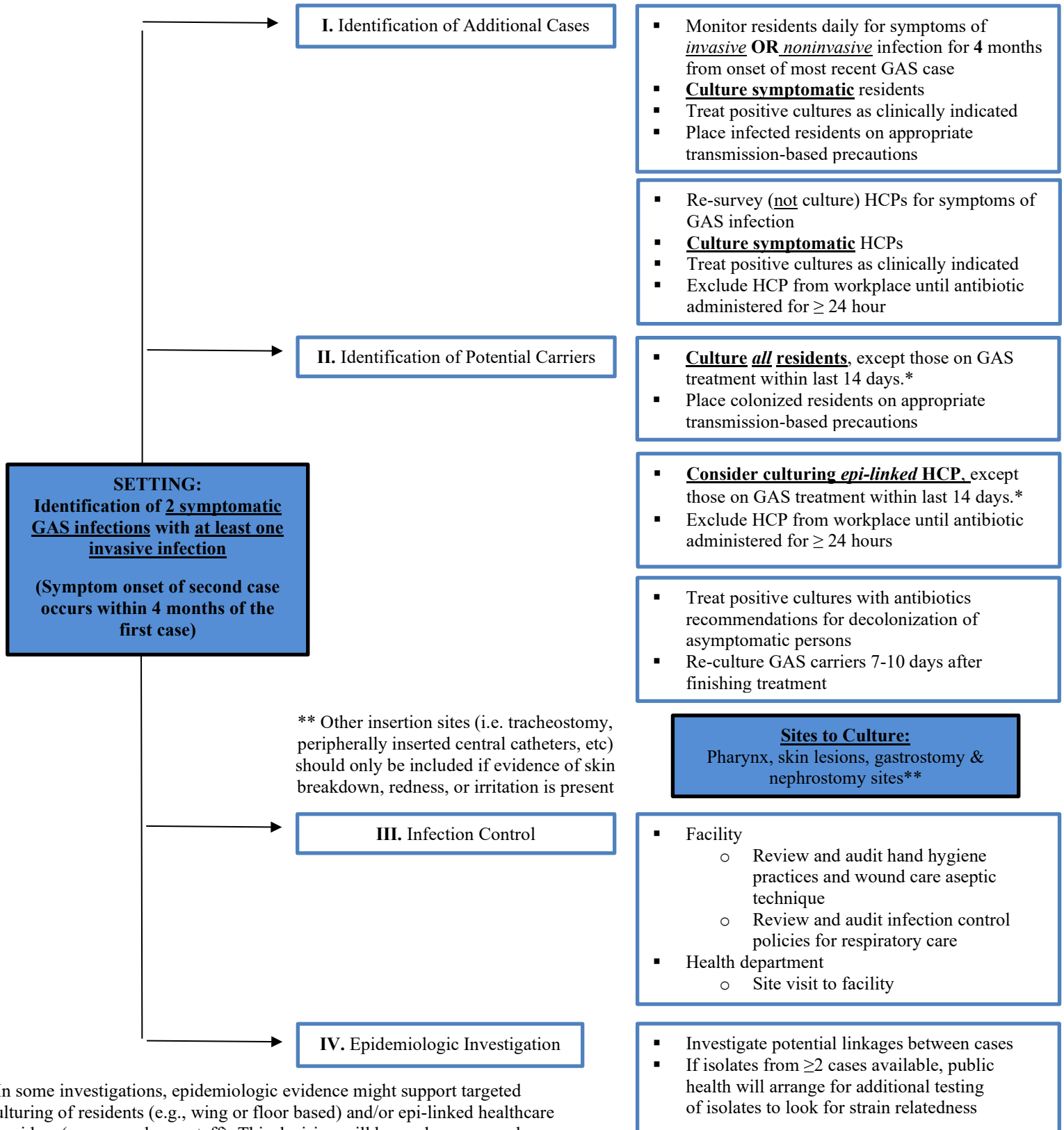
Given the potential severity of GAS in residential healthcare facilities, **even one case of invasive GAS** should prompt an epidemiological investigation by the facility and the health department.



Investigation of Two Culture-Confirmed Symptomatic Cases of GAS Infection

As outlined in the investigation of a single culture-confirmed case, the laboratory or hospital identifying the positive culture result should inform the facility as well as the health department.

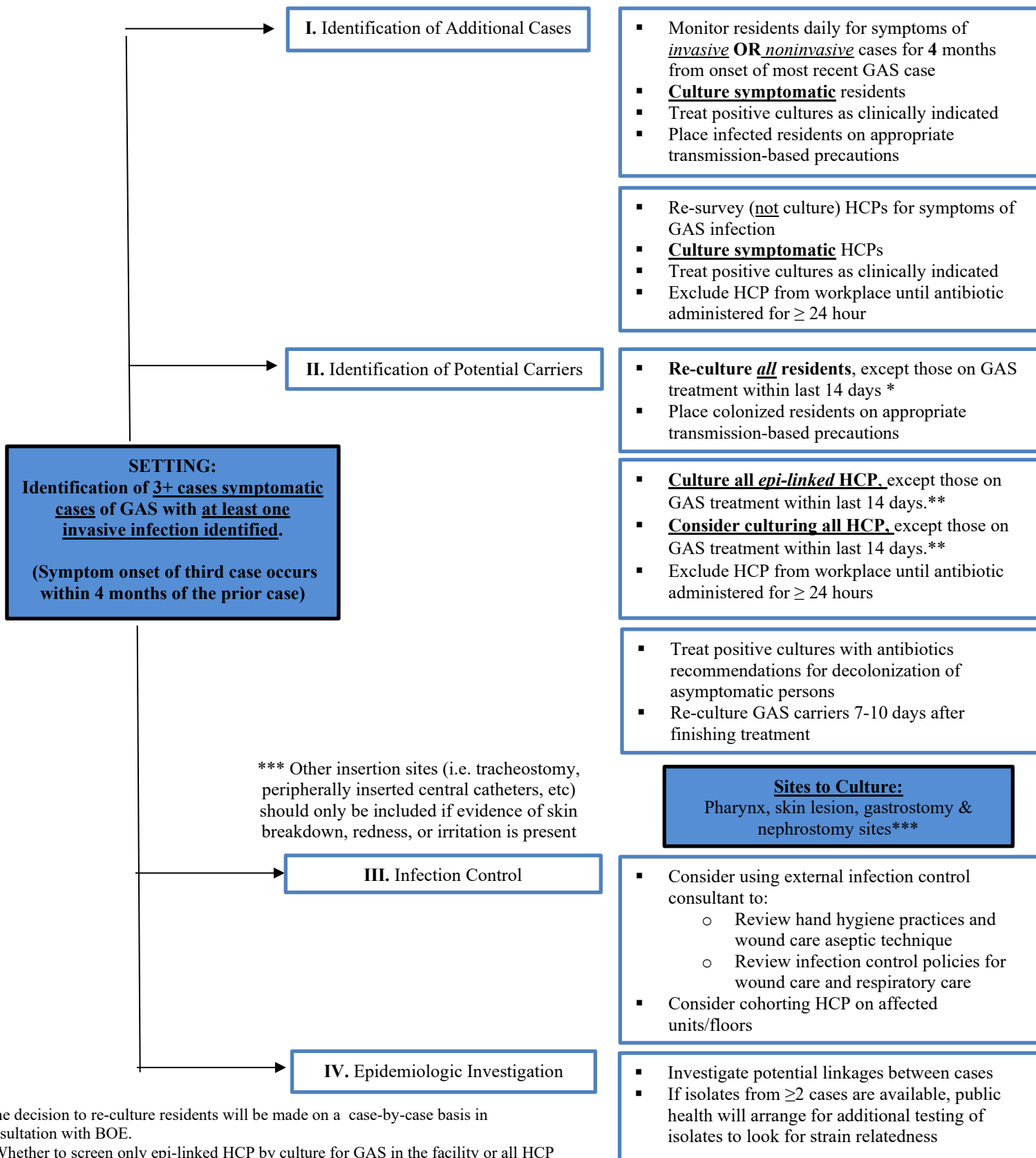
Save all GAS isolates to send to public health laboratory



*In some investigations, epidemiologic evidence might support targeted culturing of residents (e.g., wing or floor based) and/or epi-linked healthcare providers (e.g. wound care staff). This decision will be made on a case-by-case basis in consultation with Bureau of Epidemiology.

Investigation of Three or More Symptomatic Culture-Confirmed Cases of GAS

Continue steps outlined in algorithms for one or two cases: **1) notify facility of patient 2) notify health department of all new cases 3) save all GAS isolates to send to public health laboratory**



*The decision to re-culture residents will be made on a case-by-case basis in consultation with BOE.

**Whether to screen only epi-linked HCP by culture for GAS in the facility or all HCP is a decision that should be made on a case-by-case basis in consultation with BOE