

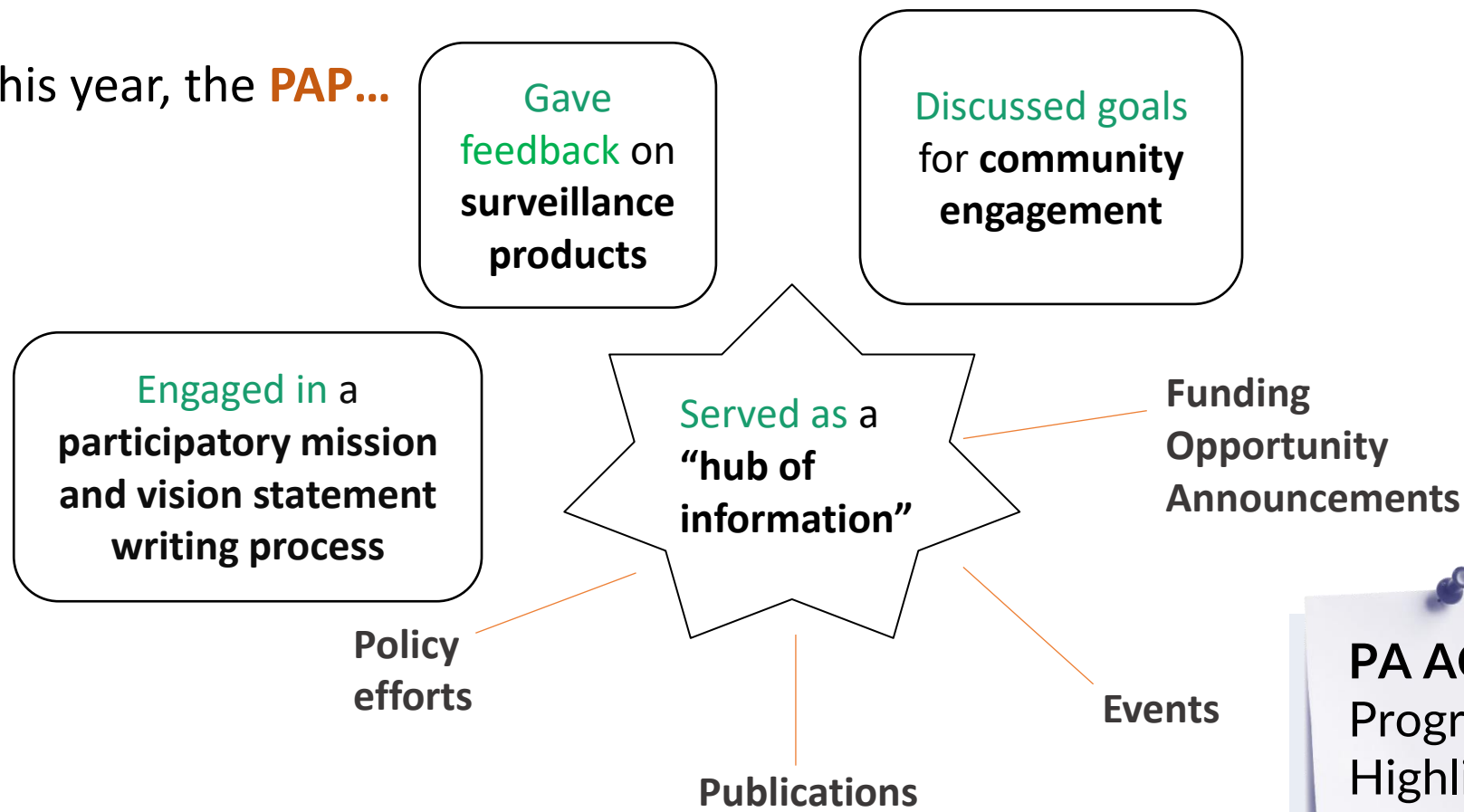
ASTHMA CONTROL PROGRAM YEAR 3 EVALUATION SUMMARY

Established in 2006, the PA Asthma Control Program (ACP) supports the EXHALE programs and policies, which include education, healthcare quality improvement activities, community resources, and asthma-friendly policies. Year 3 activities occurred from September 2022 to August 2023. The PA ACP is the collective work and interventions of many partners at the state and community levels. **The PA ACP promotes partnership by convening the PA Asthma Partnership (PAP).**

- ◇ Allegheny County Health Department
- ◇ American Lung Association
- ◇ Children’s Hospital of Philadelphia Community Asthma Prevention Program
- ◇ Duquesne University Center for Integrated Health
- ◇ Quality Insights
- ◇ Women for a Healthy Environment

22 entities participated in the **PAP**, which is comprised of the PA Department of Health, funded partners, and other asthma champions from across the state.

This year, the **PAP...**



PA ACP Program Highlight: **Duquesne school based ASME***

Expanding the role of pharmacists, pharmacy students, and nursing students in asthma education

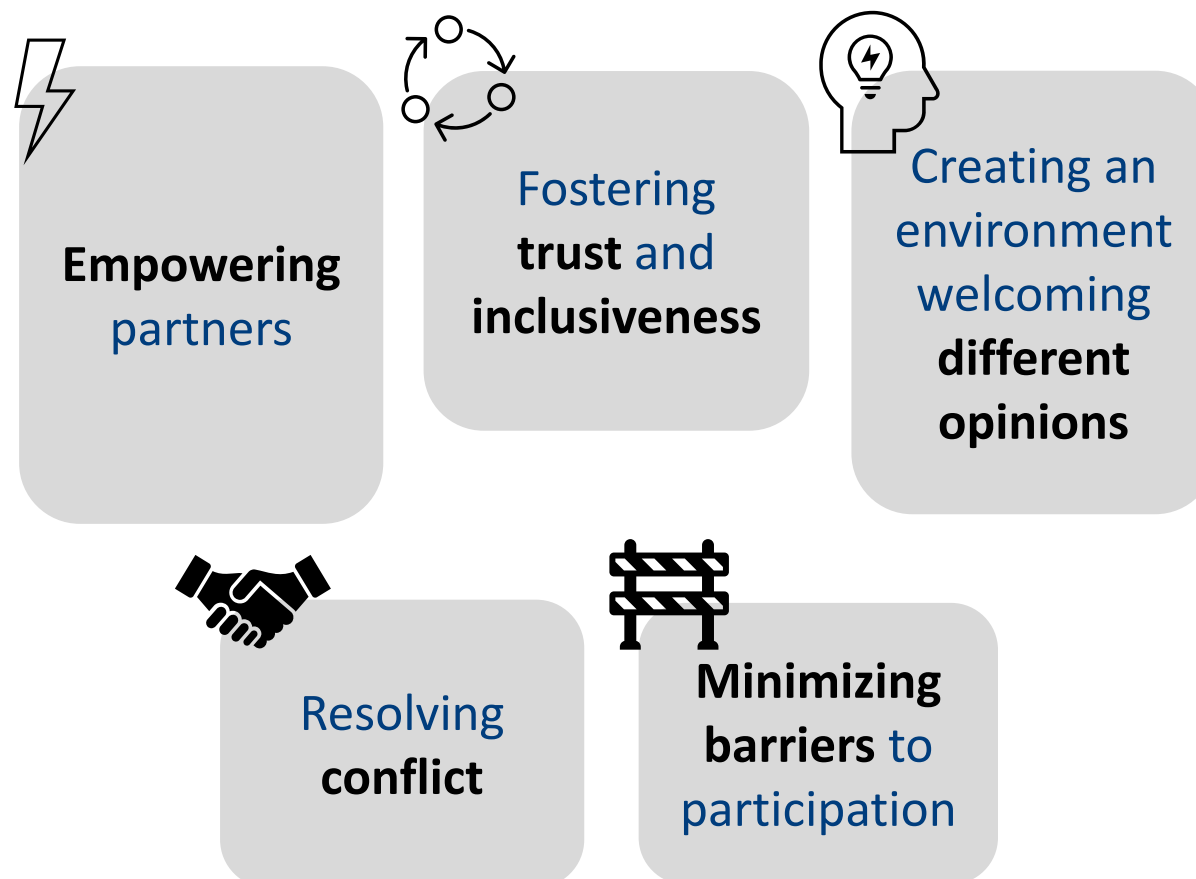
1/4 of all participants reported **one or more ER visits for asthma** in the past year

75% of participants with poorly controlled asthma **improved on ACT****

*asthma self-management education
**Asthma Control Test

PAP members agreed that they were effective in:

Member responses to the Partnership Self Assessment Tool showed characteristics of a healthy partnership.



PA ACP Program Highlight:

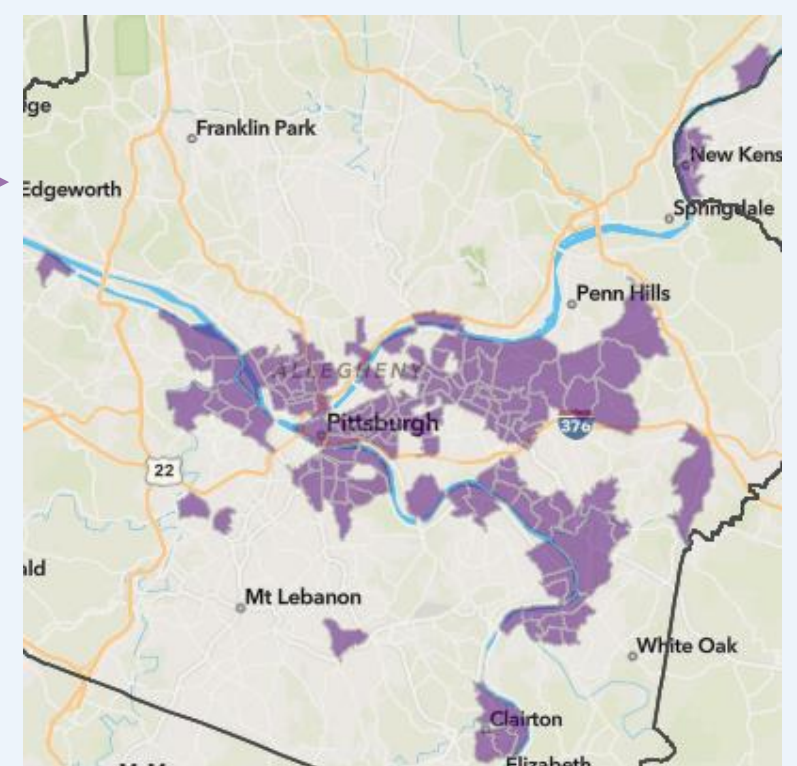
Women for a Healthy Environment (WHE)

WHE served *environmental justice areas*¹ in Allegheny County by distributing educational content at community outreach events and conducting home assessments.

46 events hosted in **23** ZIP codes

WHE provided:
 ◇ **low-cost solutions for indoor air quality,**
 ◇ **referrals to social determinants of health** resources, and
 ◇ **other health and environmental education materials.**

1,895 Estimated people reached



[Click here to learn more](#) or contact us at RA-DHPAAsthma@pa.gov

1. Pennsylvania Department of Health, Division of Environmental Health Epidemiology, (2022). Pennsylvania Environmental Health Indicators Map. <https://padoh.maps.arcgis.com/home/webmap/viewer.html?useExisting=1>

This publication was supported by the Centers for Disease Control and Prevention of the U.S. Department of Health and Human Services (HHS) as part of a financial assistance award totaling \$500,000 with 100 percent funded by CDC/HHS. The contents are those of the author(s) and do not necessarily represent the official views of, nor an endorsement, by CDC/HHS, or the U.S. Government.