



INFORMATION FOR TRAVELERS

Mosquitoes



Aedes aegypti *Aedes albopictus*

These mosquitoes usually live in tropical or subtropical areas of the world. They can be found in parts of the US.

Aedes albopictus can be found in Pennsylvania.

These are the mosquitoes that spread chikungunya virus and dengue virus.

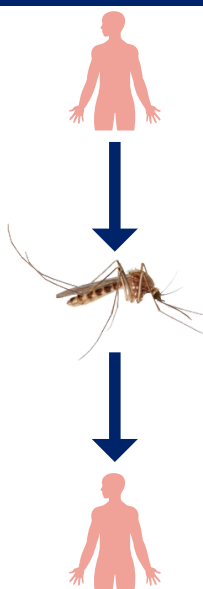
Areas at Risk for Chikungunya & Dengue

- Caribbean (including Puerto Rico)
- Central America
- South America
- Southeast Asia
- Pacific Islands

HOW IS IT SPREAD?

Step 1

Mosquito gets infected with virus from an infected human.



Step 2

Infected mosquito bites uninfected human and infects them.

WHAT CAN YOU DO?

Watch for symptoms if you have traveled to an area at-risk for these viruses.

Prevent Mosquito Bites

- Use EPA approved insect repellent
- Wear long sleeved shirts and long pants
- Use permethrin on shoes, clothing and gear
- Place screens in open windows, make sure screens do not have holes
- Use mosquito netting on strollers



Dengue Virus Infection Symptoms

- High fever
- Severe headache
- Severe pain
- Joint pain
- Bone and muscle pain
- Rash
- Mild bleeding (e.g.: nose or gums bleed, easy bruising)

Chikungunya Virus Infection Symptoms

- Fever
- Joint pain
- Headache
- Muscle pain
- Joint swelling
- Rash

Talk to your healthcare provider if you have a fever or other symptoms. Tell them where and when you traveled.

