

**PENNSYLVANIA WEEKLY INFLUENZA REPORT  
INFORMATION FROM 01OCT17 THROUGH 29SEP18**

**SEASON-TO-DATE INFLUENZA CASE COUNTS BY COUNTY AND INFLUENZA TYPE**

|            | Influenza Type |      |     | TOTAL |
|------------|----------------|------|-----|-------|
|            | A              | B    | U   |       |
| County     |                |      |     |       |
|            | 406            | 194  | 63  | 663   |
| ADAMS      | 838            | 233  | 1   | 1072  |
| ALLEGHENY  | 9420           | 2627 | 724 | 12771 |
| ARMSTRONG  | 304            | 102  | .   | 406   |
| BEAVER     | 1520           | 660  | 25  | 2205  |
| BEDFORD    | 275            | 94   | .   | 369   |
| BERKS      | 2574           | 1865 | 11  | 4450  |
| BLAIR      | 1664           | 339  | 1   | 2004  |
| BRADFORD   | 795            | 171  | .   | 966   |
| BUCKS      | 2498           | 1649 | 1   | 4148  |
| BUTLER     | 1061           | 418  | 35  | 1514  |
| CAMBRIA    | 1300           | 214  | 1   | 1515  |
| CAMERON    | 71             | 34   | .   | 105   |
| CARBON     | 255            | 167  | .   | 422   |
| CENTRE     | 1642           | 595  | .   | 2237  |
| CHESTER    | 2408           | 1741 | 6   | 4155  |
| CLARION    | 220            | 130  | .   | 350   |
| CLEARFIELD | 895            | 550  | .   | 1445  |
| CLINTON    | 166            | 64   | .   | 230   |
| COLUMBIA   | 357            | 172  | .   | 529   |
| CRAWFORD   | 976            | 835  | .   | 1811  |
| CUMBERLAND | 1828           | 1124 | 265 | 3217  |
| DAUPHIN    | 1693           | 1009 | 19  | 2721  |
| DELAWARE   | 3282           | 2181 | 7   | 5470  |
| ELK        | 386            | 234  | .   | 620   |
| ERIE       | 2196           | 1676 | .   | 3872  |
| FAYETTE    | 1029           | 463  | 6   | 1498  |
| FOREST     | 17             | 17   | .   | 34    |
| FRANKLIN   | 995            | 413  | .   | 1408  |
| FULTON     | 123            | 115  | .   | 238   |
| GREENE     | 195            | 111  | .   | 306   |
| HUNTINGDON | 684            | 285  | .   | 969   |
| INDIANA    | 1109           | 289  | .   | 1398  |
| JEFFERSON  | 625            | 425  | .   | 1050  |
| JUNIATA    | 176            | 105  | .   | 281   |

(Continued)

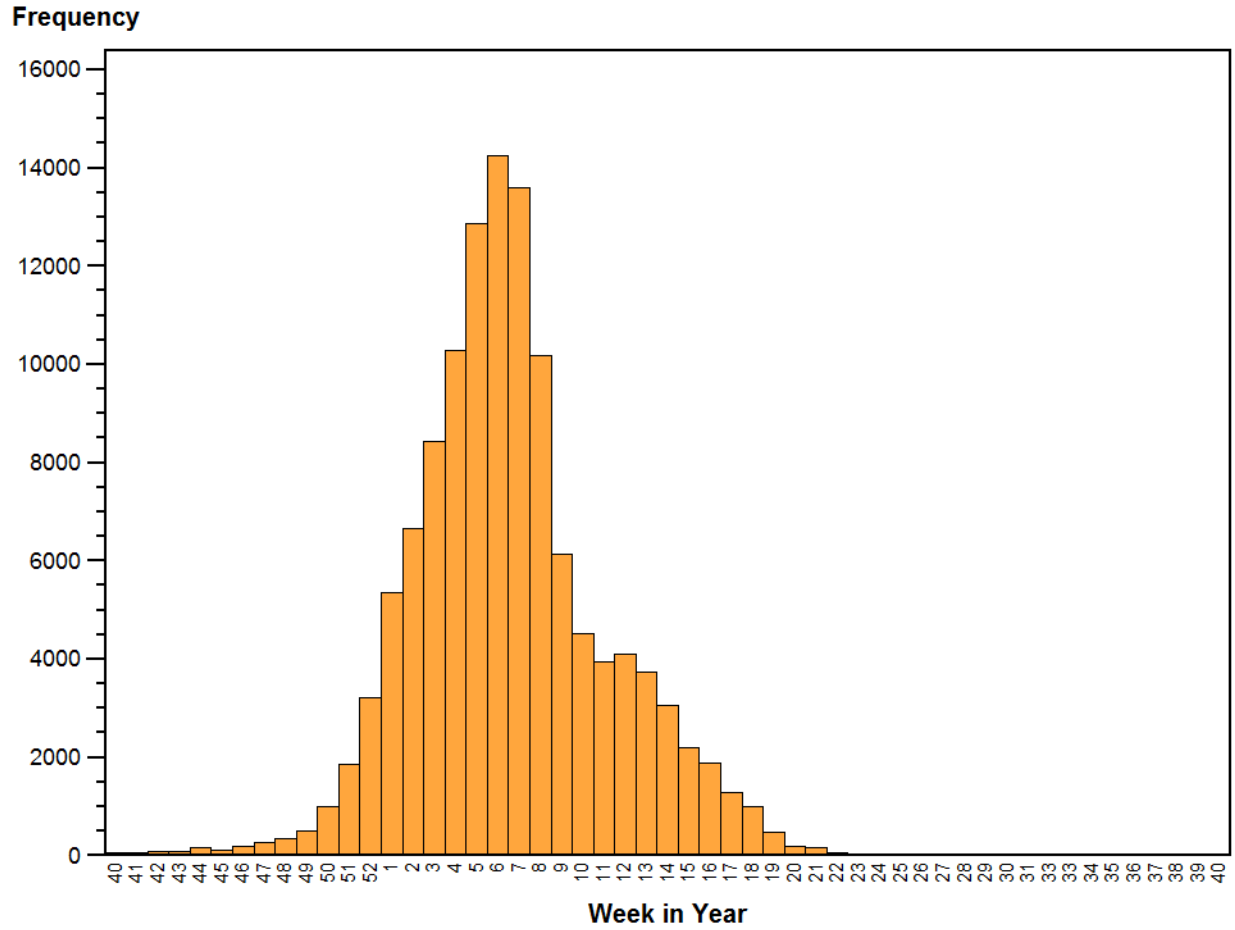
**PENNSYLVANIA WEEKLY INFLUENZA REPORT  
INFORMATION FROM 01OCT17 THROUGH 29SEP18**

**SEASON-TO-DATE INFLUENZA CASE COUNTS BY COUNTY AND INFLUENZA TYPE**

| County         | Influenza Type |       |      | TOTAL  |
|----------------|----------------|-------|------|--------|
|                | A              | B     | U    |        |
| LACKAWANNA     | 1478           | 692   | .    | 2170   |
| LANCASTER      | 3326           | 1242  | 2    | 4570   |
| LAWRENCE       | 476            | 426   | 1    | 903    |
| LEBANON        | 810            | 652   | .    | 1462   |
| LEHIGH         | 2000           | 1653  | 1    | 3654   |
| LUZERNE        | 2964           | 1651  | .    | 4615   |
| LYCOMING       | 593            | 307   | .    | 900    |
| MCKEAN         | 237            | 169   | .    | 406    |
| MERCER         | 472            | 251   | .    | 723    |
| MIFFLIN        | 496            | 306   | 287  | 1089   |
| MONROE         | 411            | 300   | .    | 711    |
| MONTGOMERY     | 3916           | 2436  | 71   | 6423   |
| MONTOUR        | 172            | 71    | .    | 243    |
| NORTHAMPTON    | 3198           | 2415  | 1    | 5614   |
| NORTHUMBERLAND | 488            | 207   | .    | 695    |
| PERRY          | 306            | 153   | .    | 459    |
| PHILADELPHIA   | 2781           | 1634  | 3    | 4418   |
| PIKE           | 108            | 66    | .    | 174    |
| POTTER         | 229            | 221   | .    | 450    |
| SCHUYLKILL     | 792            | 395   | 1    | 1188   |
| SNYDER         | 248            | 106   | .    | 354    |
| SOMERSET       | 424            | 107   | 20   | 551    |
| SULLIVAN       | 12             | 3     | .    | 15     |
| SUSQUEHANNA    | 121            | 46    | .    | 167    |
| TIOGA          | 158            | 87    | .    | 245    |
| UNION          | 501            | 162   | 1    | 664    |
| VENANGO        | 172            | 72    | .    | 244    |
| WARREN         | 385            | 290   | .    | 675    |
| WASHINGTON     | 1916           | 523   | 2    | 2441   |
| WAYNE          | 636            | 461   | .    | 1097   |
| WESTMORELAND   | 2778           | 796   | 10   | 3584   |
| WYOMING        | 131            | 70    | .    | 201    |
| YORK           | 3302           | 1155  | 19   | 4476   |
| All            | 80020          | 40426 | 1584 | 122030 |

**PENNSYLVANIA WEEKLY INFLUENZA REPORT  
INFORMATION FROM 01OCT17 THROUGH 29SEP18**

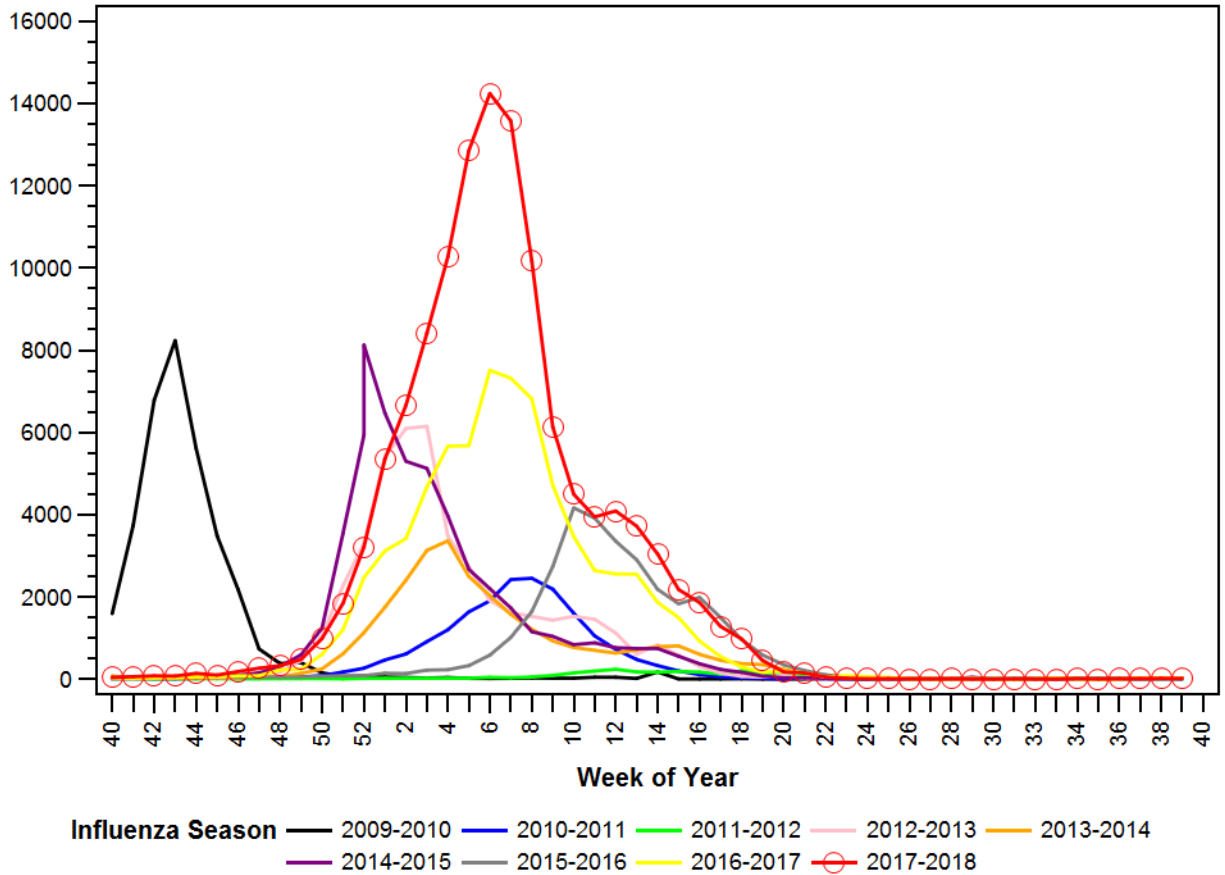
**NUMBER OF PA INFLUENZA CASES (ANTIGEN, CULTURE, OR PCR POSITIVE), BY WEEK OF  
FIRST REPORT**



## PENNSYLVANIA WEEKLY INFLUENZA REPORT INFORMATION FROM 01OCT17 THROUGH 29SEP18

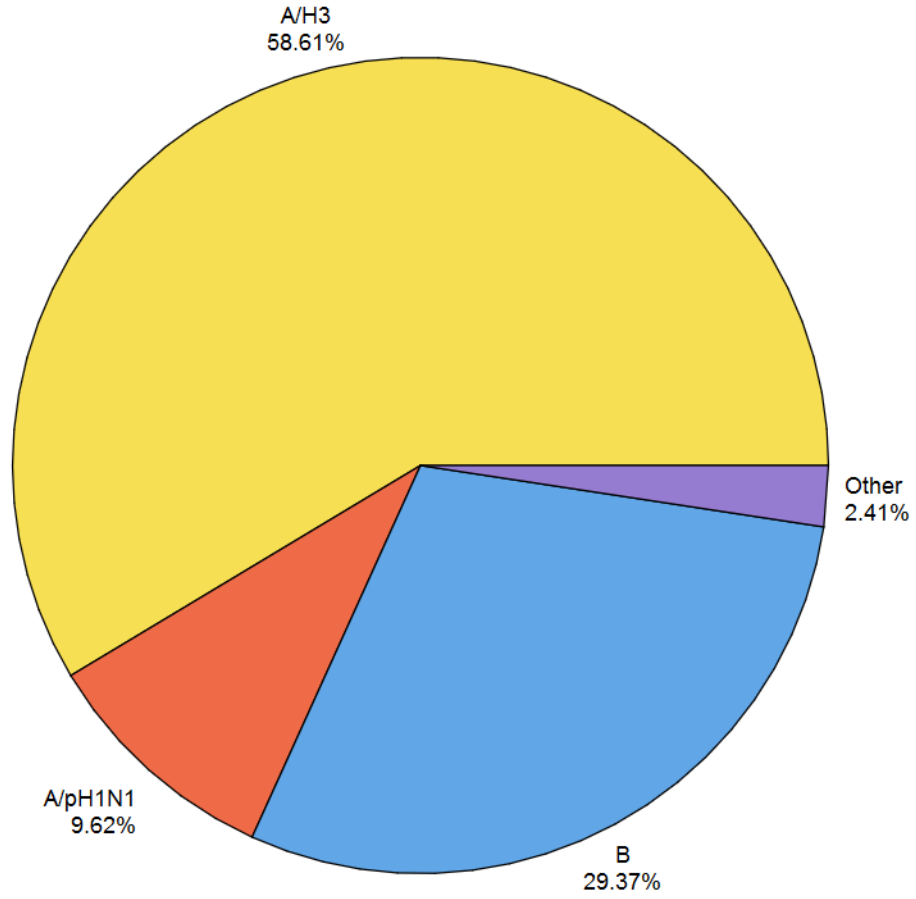
### COMPARISON OF PA-NEDSS INFLUENZA CASES (ALL TYPES) IN CURRENT SEASON TO THE 8 PREVIOUS SEASONS

Number of Cases



# PENNSYLVANIA WEEKLY INFLUENZA REPORT INFORMATION FROM 01OCT17 THROUGH 29SEP18

## SEASON-TO-DATE INFLUENZA SUB-TYPING RESULTS FROM STATE PUBLIC HEALTH LAB



**PENNSYLVANIA WEEKLY INFLUENZA REPORT  
INFORMATION FROM 01OCT17 THROUGH 29SEP18**

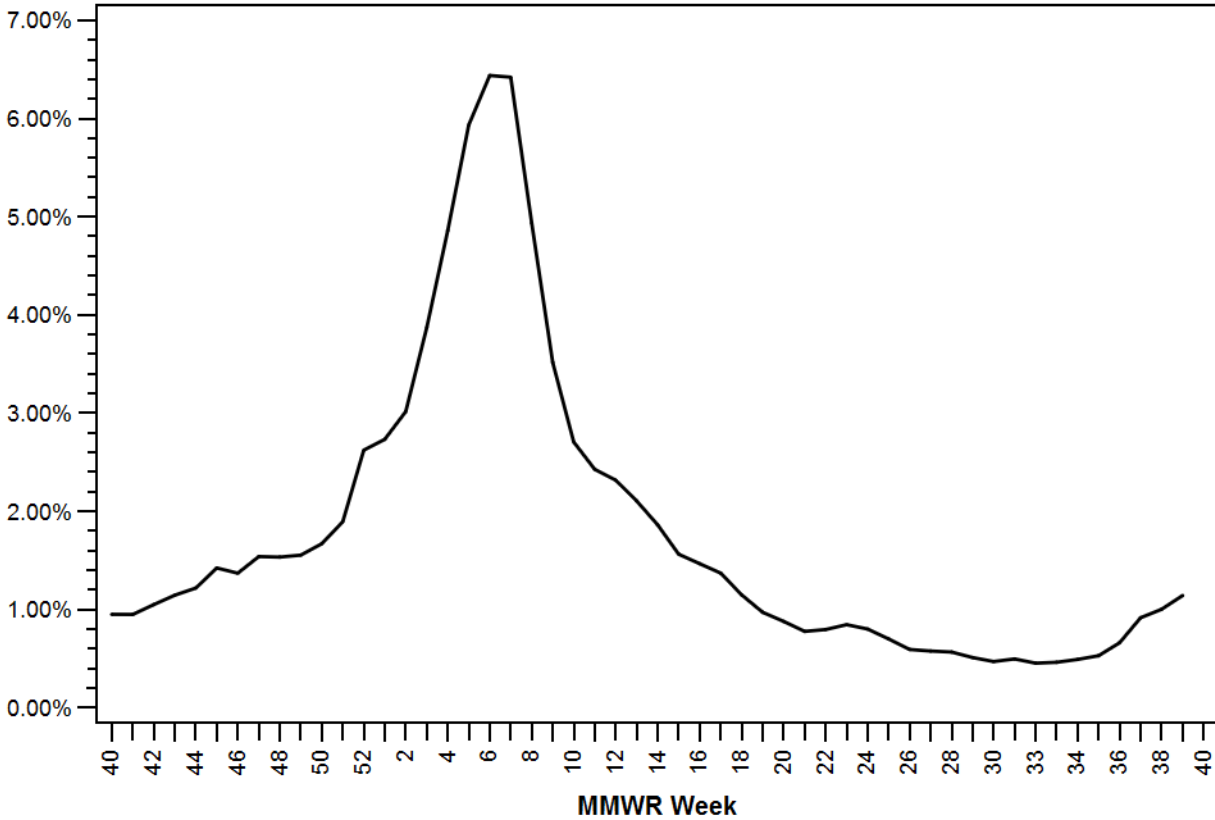
**SEASON-TO-DATE INFLUENZA-ASSOCIATED DEATHS BY AGE**

|              | Influenza-associated deaths |
|--------------|-----------------------------|
| <b>AGE</b>   |                             |
| <b>0-18</b>  | 7                           |
| <b>19-24</b> | 2                           |
| <b>25-49</b> | 6                           |
| <b>50-64</b> | 39                          |
| <b>65+</b>   | 204                         |
| <b>All</b>   | 258                         |

# PENNSYLVANIA WEEKLY INFLUENZA REPORT INFORMATION FROM 01OCT17 THROUGH 29SEP18

## PERCENT OF EMERGENCY DEPARTMENT VISITS WITH INFLUENZA-LIKE ILLNESS (ILI\*) AS REASON FOR VISIT Statewide, By Week of Emergency Department Visit

Percent of ED Visits for ILI



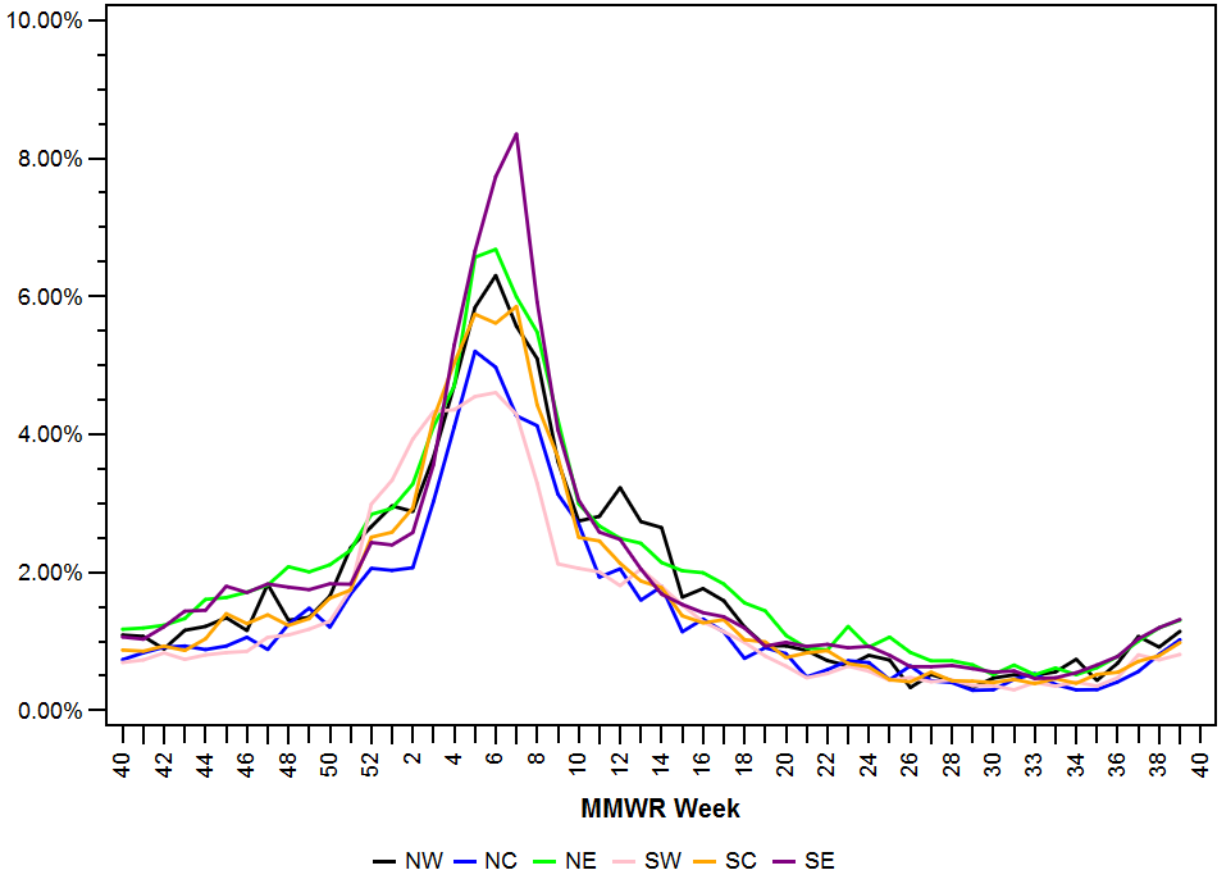
Influenza Season — 2017-2018

*\*ILI defined as presence of fever and (cough or sore throat) syndromes, or specific reference to flu ED data obtained daily from 146 Emergency Departments across Pennsylvania*

**PENNSYLVANIA WEEKLY INFLUENZA REPORT  
 INFORMATION FROM 01OCT17 THROUGH 29SEP18**

**PERCENT OF EMERGENCY DEPARTMENT VISITS WITH INFLUENZA-LIKE ILLNESS (ILI\*) AS  
 REASON FOR VISIT  
 By Region and Week of Emergency Department Visit**

Percent of ED Visits for ILI



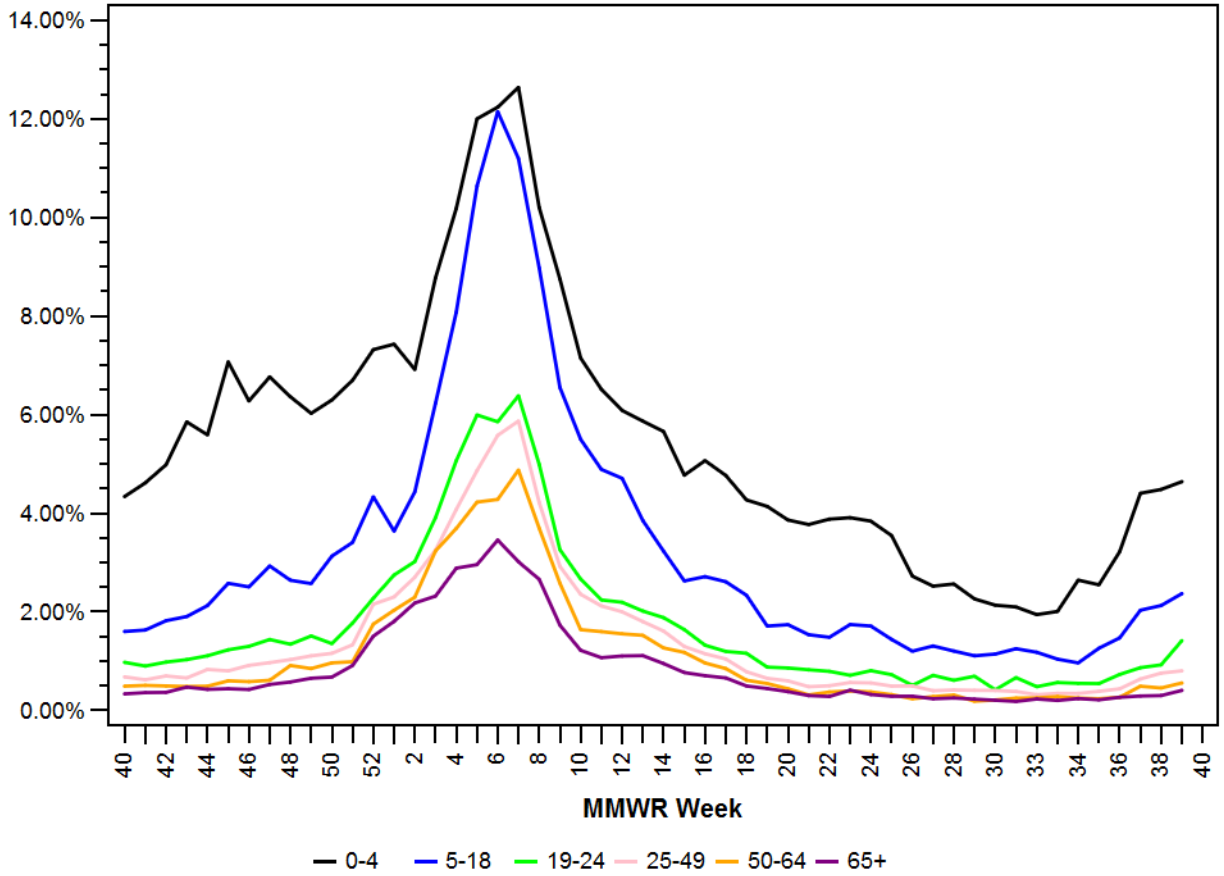
*\*ILI defined as presence of fever and (cough or sore throat) syndromes, or specific reference to flu ED data obtained daily from 146 Emergency Departments across Pennsylvania*



**PENNSYLVANIA WEEKLY INFLUENZA REPORT  
 INFORMATION FROM 01OCT17 THROUGH 29SEP18**

**PERCENT OF EMERGENCY DEPARTMENT VISITS WITH INFLUENZA-LIKE ILLNESS (ILI\*) AS  
 REASON FOR VISIT  
 By Age Group and Week of Emergency Department Visit**

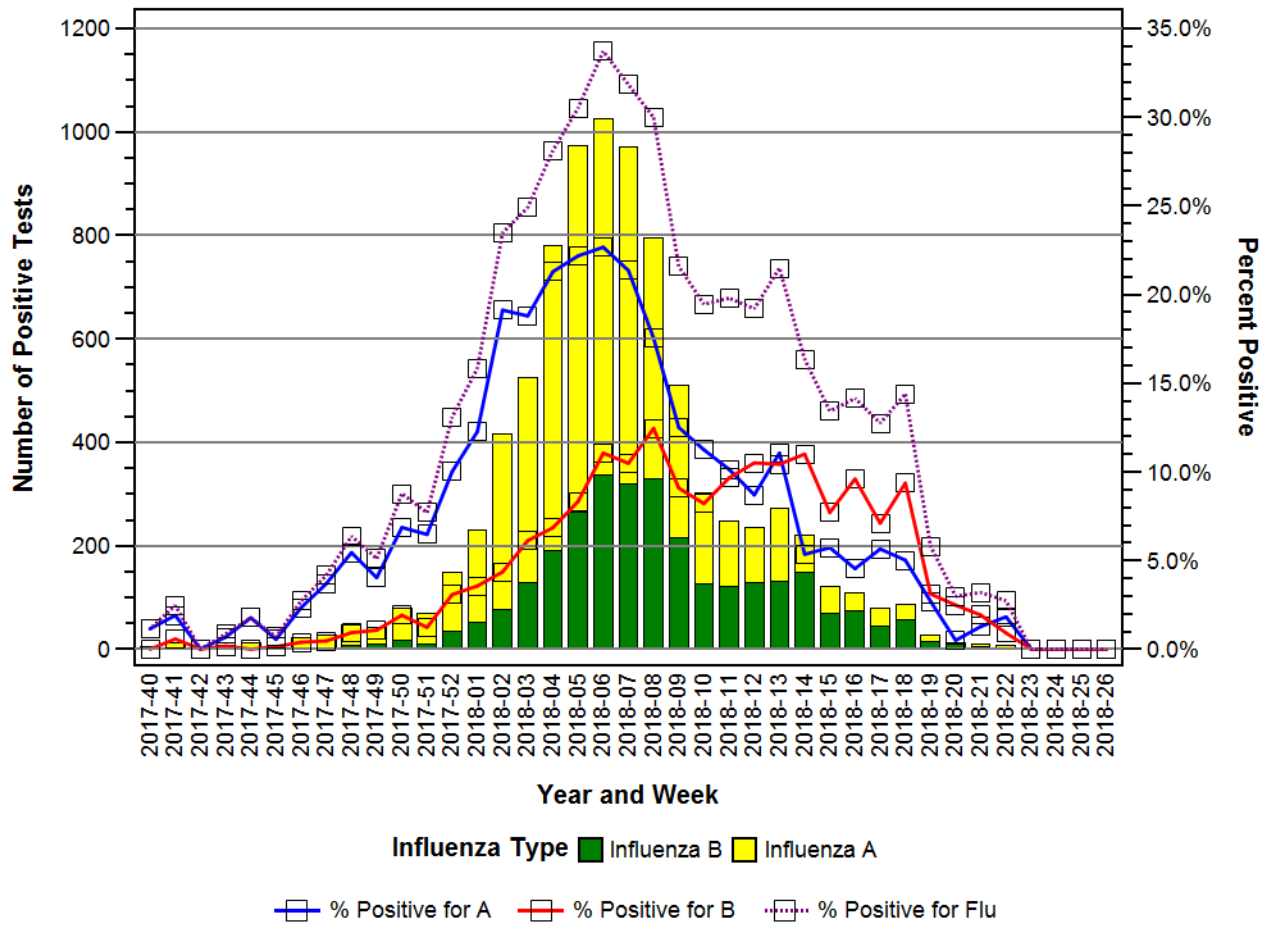
Percent of ED Visits for ILI



*\*ILI defined as presence of fever and (cough or sore throat) syndromes, or specific reference to flu ED data obtained daily from 146 Emergency Departments across Pennsylvania*

## PENNSYLVANIA WEEKLY INFLUENZA REPORT INFORMATION FROM 01OCT17 THROUGH 29SEP18

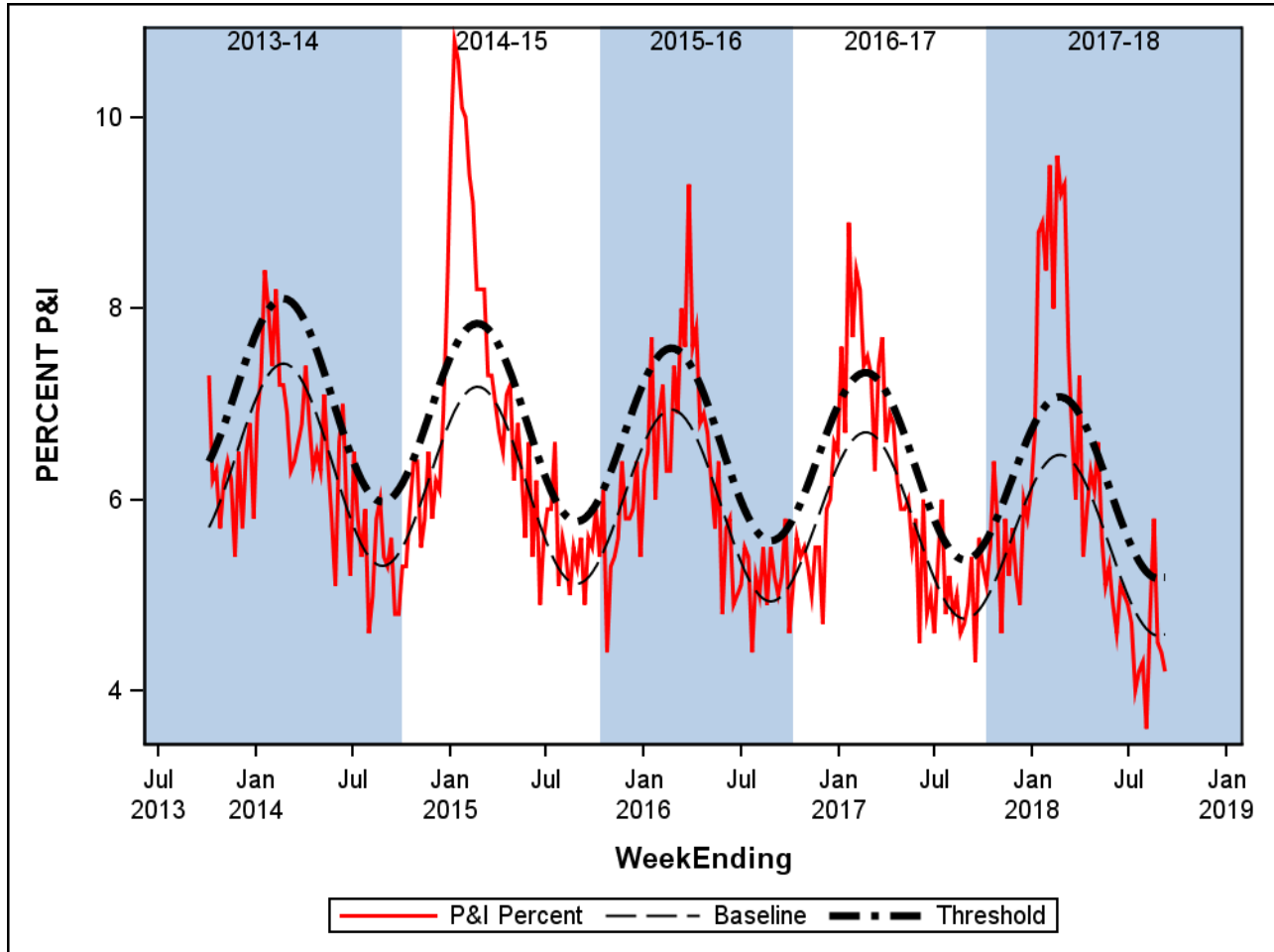
### Influenza Test Results Reported to the National Respiratory and Enteric Virus Surveillance System (NREVSS) Select Pennsylvania Laboratories, Season to date



*\*ILI defined as presence of fever and (cough or sore throat) syndromes, or specific reference to flu ED data obtained daily from 146 Emergency Departments across Pennsylvania*

**PENNSYLVANIA WEEKLY INFLUENZA REPORT  
 INFORMATION FROM 01OCT17 THROUGH 29SEP18**

**Percent of Total Deaths Attributed to Pneumonia and Influenza, Pennsylvania  
 Through Week 36 (Ending 08SEP18)**



*\*ILI defined as presence of fever and (cough or sore throat) syndromes, or specific reference to flu ED data obtained daily from 146 Emergency Departments across Pennsylvania*