

**PENNSYLVANIA WEEKLY INFLUENZA REPORT
 INFORMATION FROM 28SEP14 THROUGH 03OCT15**

**SEASON-TO-DATE INFLUENZA CASES BY COUNTY AND INFLUENZA
 TYPE**

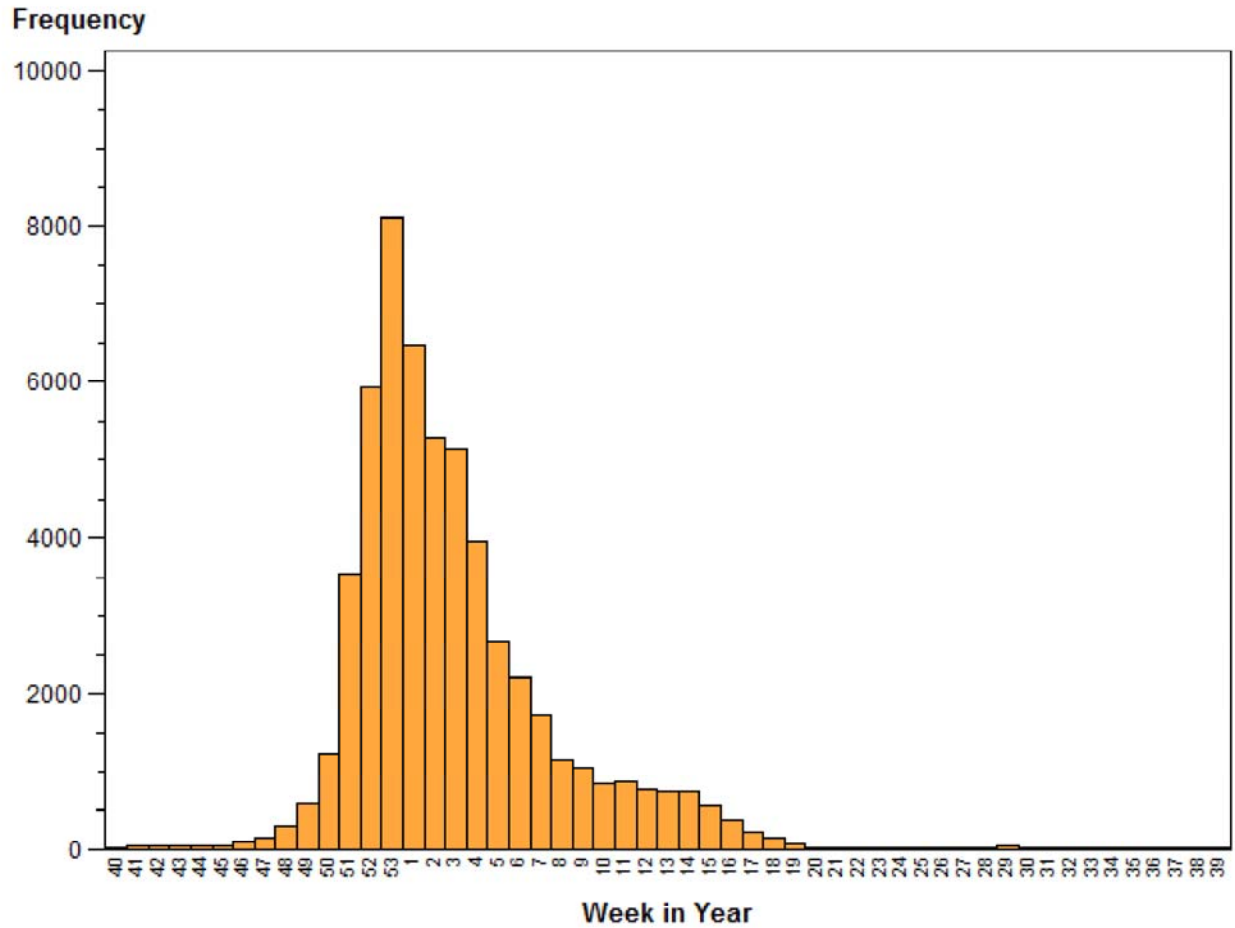
County	Influenza Type			TOTAL
	A	B	U	
	316	29	.	345
ADAMS	782	168	1	951
ALLEGHENY	4762	422	32	5216
ARMSTRONG	264	56	1	321
BEAVER	448	47	6	501
BEDFORD	170	33	1	204
BERKS	1623	110	1	1734
BLAIR	577	138	3	718
BRADFORD	94	61	2	157
BUCKS	1663	91	2	1756
BUTLER	939	267	80	1286
CAMBRIA	519	72	.	591
CAMERON	17	6	.	23
CARBON	274	32	.	306
CENTRE	718	68	.	786
CHESTER	1471	55	8	1534
CLARION	188	34	.	222
CLEARFIELD	320	51	14	385
CLINTON	176	5	.	181
COLUMBIA	187	26	.	213
CRAWFORD	710	151	1	862
CUMBERLAND	1225	109	.	1334
DAUPHIN	1279	208	.	1487

DELAWARE	1616	130	3	1749
ELK	143	76	.	219
ERIE	902	252	1	1155
FAYETTE	967	65	1	1033
FOREST	13	1	.	14
FRANKLIN	797	113	1	911
FULTON	192	27	.	219
GREENE	130	16	.	146
HUNTINGDON	215	33	.	248
INDIANA	562	153	2	717
JEFFERSON	230	50	1	281
JUNIATA	43	4	.	47
LACKAWANNA	662	82	.	744
LANCASTER	1345	138	1	1484
LAWRENCE	203	45	.	248
LEBANON	557	90	.	647
LEHIGH	3399	154	2	3555
LUZERNE	1690	205	3	1898
LYCOMING	588	44	.	632
MCKEAN	306	49	.	355
MERCER	264	54	1	319
MIFFLIN	395	17	.	412
MONROE	267	17	2	286
MONTGOMERY	2264	163	5	2432
MONTOUR	899	380	65	1344
NORTHAMPTON	1831	258	5	2094
NORTHUMBERLAND	454	62	.	516
PERRY	69	3	2	74
PHILADELPHIA	1605	104	19	1728
PIKE	68	3	.	71
POTTER				

	232	65	.	297
SCHUYLKILL	724	55	.	779
SNYDER	285	13	.	298
SOMERSET	321	69	37	427
SULLIVAN	7	1	.	8
SUSQUEHANNA	85	28	.	113
TIOGA	171	15	.	186
UNION	343	48	.	391
VENANGO	212	23	.	235
WARREN	107	111	.	218
WASHINGTON	1733	285	3	2021
WAYNE	237	17	.	254
WESTMORELAND	1324	155	133	1612
WYOMING	73	14	.	87
YORK	1750	163	3	1916
All	49002	6089	442	55533

**PENNSYLVANIA WEEKLY INFLUENZA REPORT
INFORMATION FROM 28SEP14 THROUGH 03OCT15**

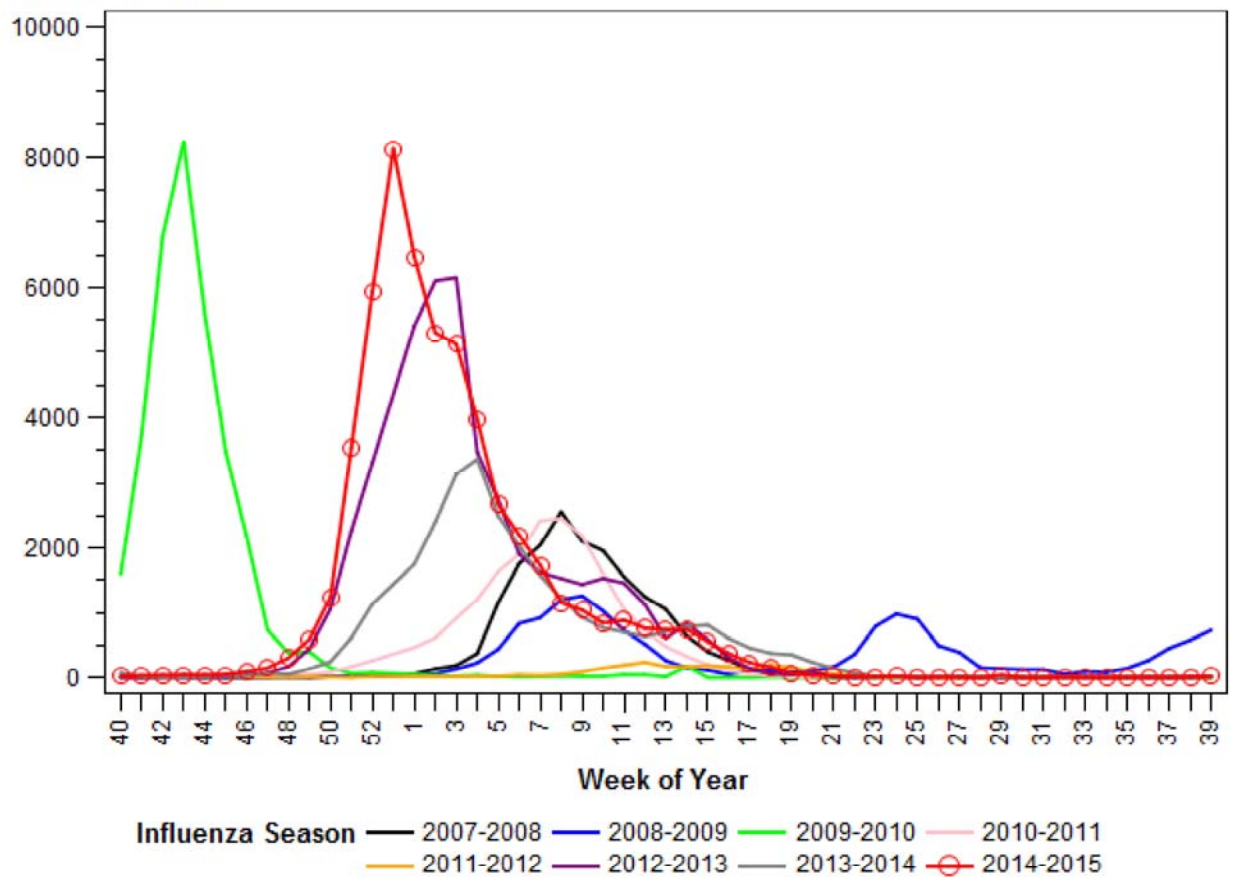
**NUMBER OF PA INFLUENZA CASES (ANTIGEN, CULTURE, OR PCR
POSITIVE), BY WEEK OF FIRST REPORT**



**PENNSYLVANIA WEEKLY INFLUENZA REPORT
INFORMATION FROM 28SEP14 THROUGH 03OCT15**

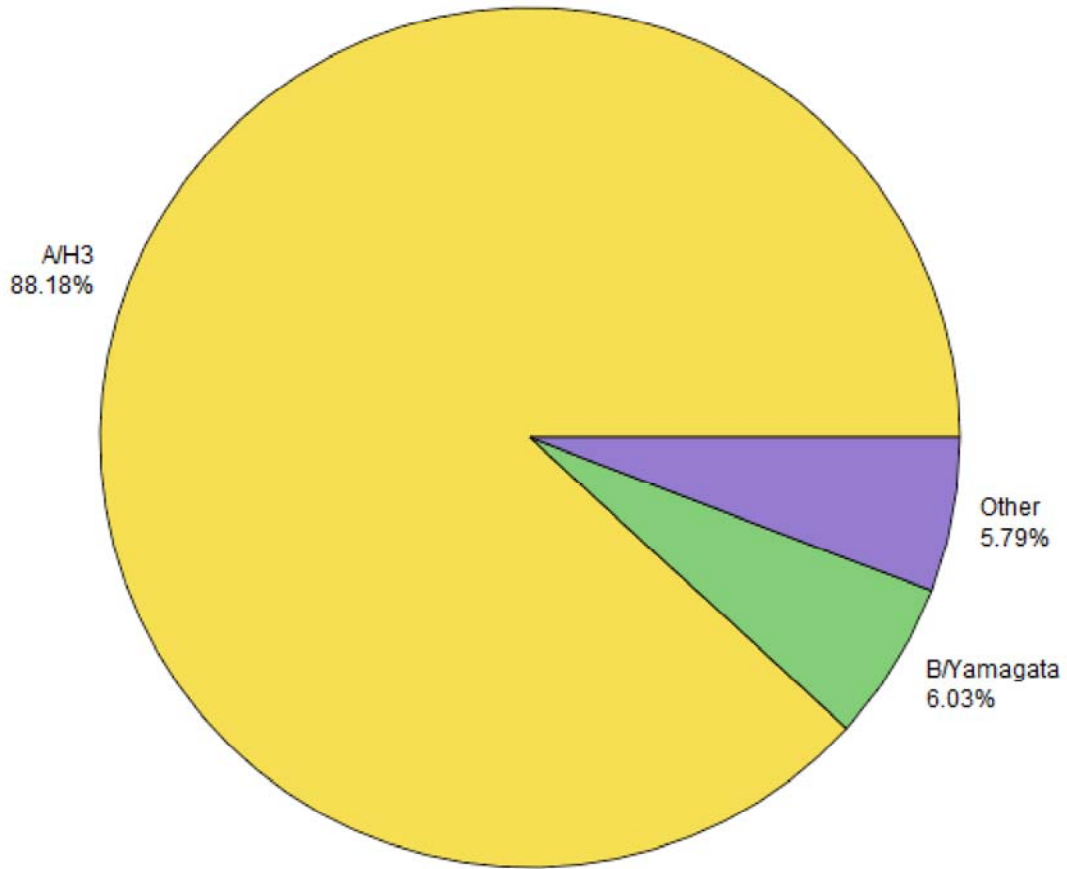
**COMPARISON OF PA-NEDSS INFLUENZA CASES (ALL TYPES) IN
CURRENT SEASON TO THE 6 PREVIOUS SEASONS**

Number of Cases



**PENNSYLVANIA WEEKLY INFLUENZA REPORT
INFORMATION FROM 28SEP14 THROUGH 03OCT15**

**SEASON-TO-DATE INFLUENZA SUB-TYPING RESULTS FROM STATE
PUBLIC HEALTH LAB**



**PENNSYLVANIA WEEKLY INFLUENZA REPORT
INFORMATION FROM 28SEP14 THROUGH 03OCT15**

SEASON-TO-DATE INFLUENZA-ASSOCIATED DEATHS BY AGE

	Influenza-associated deaths
AGE	
0-4	3
10-18	1
19-24	2
25-49	6
50-64	22
65+	187
All	221