

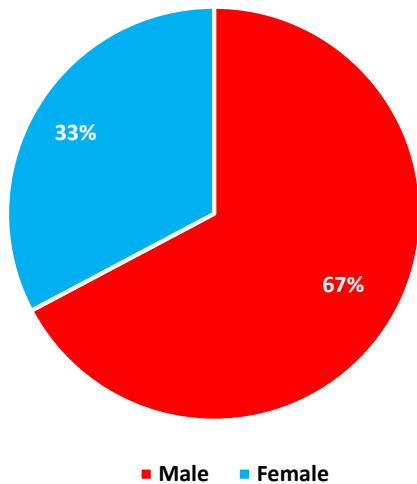
**BACKGROUND**

Northampton County, Pennsylvania is an urban county with a population of 303,405 people (149,347 males and 154,058 females). In 2017, Northampton County had 58 suicide deaths (39 males and 19 females) at a rate of 18.5 suicide deaths per 100,000 people. The Pennsylvania Violent Death Reporting System (PAVDRS) worked closely with the Bureau of Health Statistics and Registries and the Northampton County Coroner’s Office to gather detailed information about each violent death. Below are some results of those collaborations.

**In Northampton County, approximately 5 suicide deaths occurred every month.**

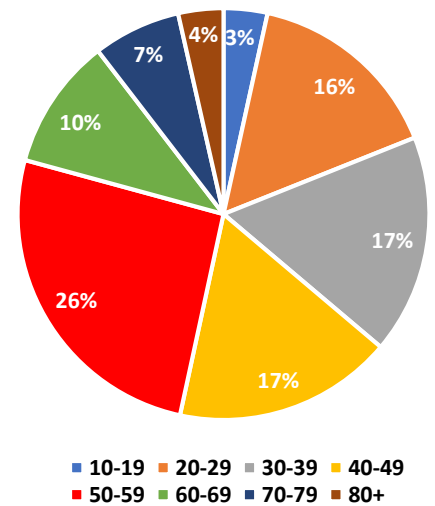
**Characteristics of Suicide Victims**

**Sex of Victims:**

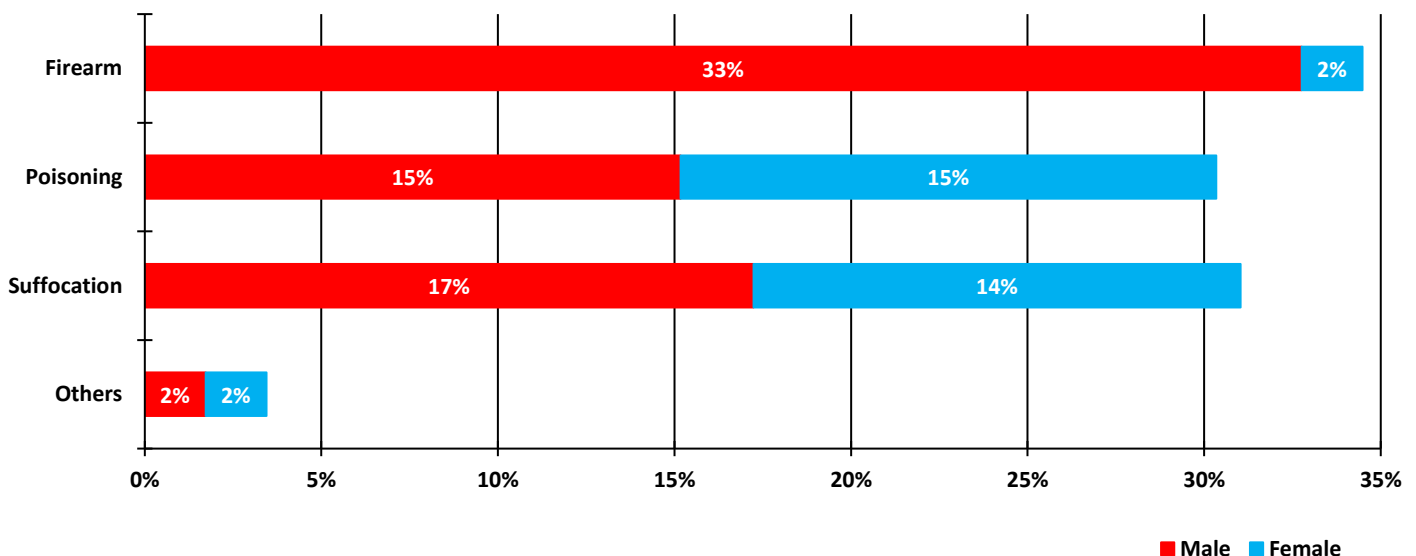


- Data showed that males were over 3 times more likely to die by suicide than females.
- Northampton residents, ages 30-39, were almost twice more likely to die by suicide compared to Pennsylvania residents, ages 30-39.
- Overall, suicide death rates in Northampton County were higher than the state average:  
**Northampton Rates:** 18.5 deaths per 100,000 population (males 24.4 and females 12.8).  
**Pennsylvania Rates:** 13.8 deaths per 100,000 population (males 21.4 and females 6.6).

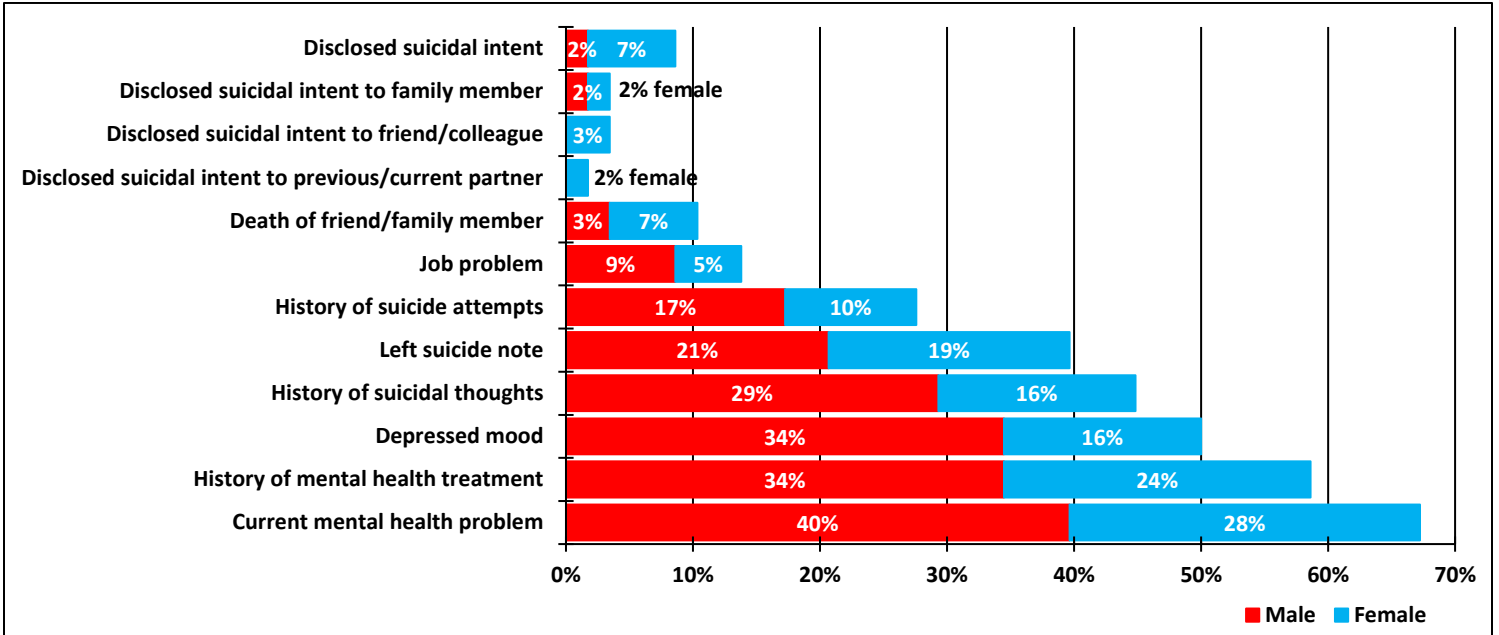
**Age of Victims:**



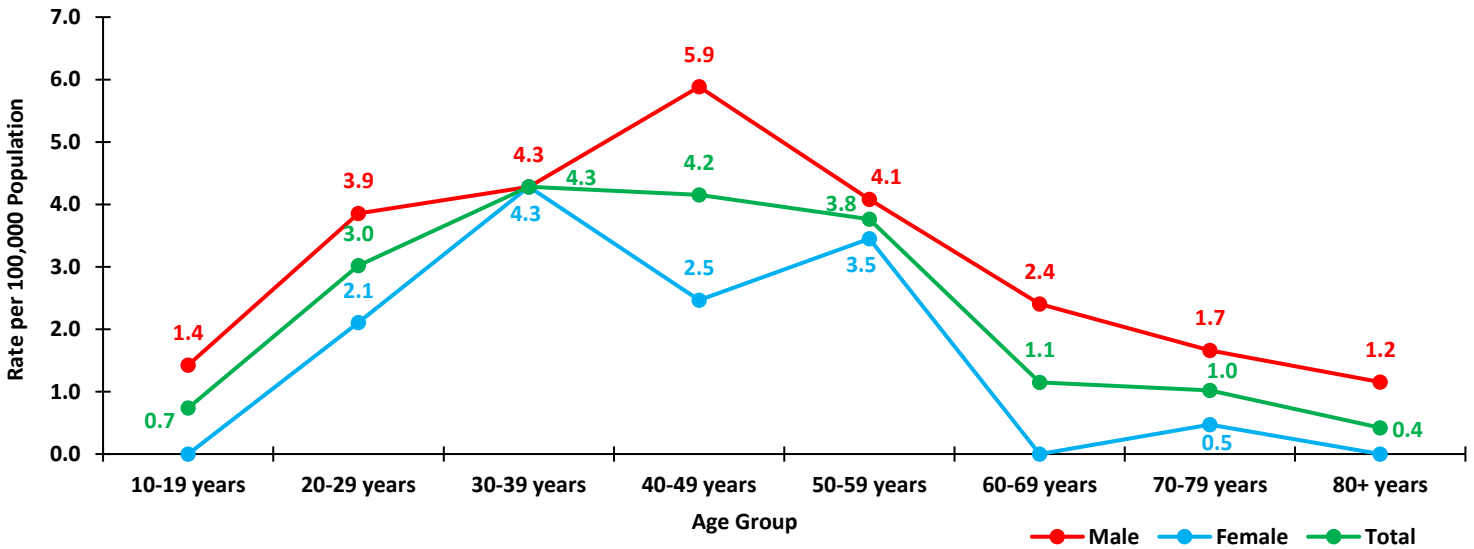
**Leading Cause of Suicide Deaths by Sex:**



**Most Common Precipitating Circumstances:**



**Age-adjusted Rates:**



The PAVDRS program is a state level surveillance system funded and overseen by the Centers for Disease Control and Prevention (CDC). It is part of the larger National Violent Death Reporting System (NVDRS). There is a Violent Death Reporting System in all 50 states and some US territories. The PAVDRS program collects data on suicides, homicides, deaths of undetermined intent, and accidental firearm deaths. The program is required to collect data directly from death certificates, coroners/medical examiners, and law enforcement. These sources contribute to a comprehensive understanding of each violent death. The program tries to understand what was happening in the victim’s life leading up to their death. PAVDRS/NVDRS data is used for research, policymaking, and, ultimately, to develop violence prevention programs and strategies that will enhance community safety. For more information about the PAVDRS program, please call 717-787-5900 or email RA-DHPAVDRS@pa.gov