



**Bureau of Family Health
Breastfeeding Awareness and Support Program**

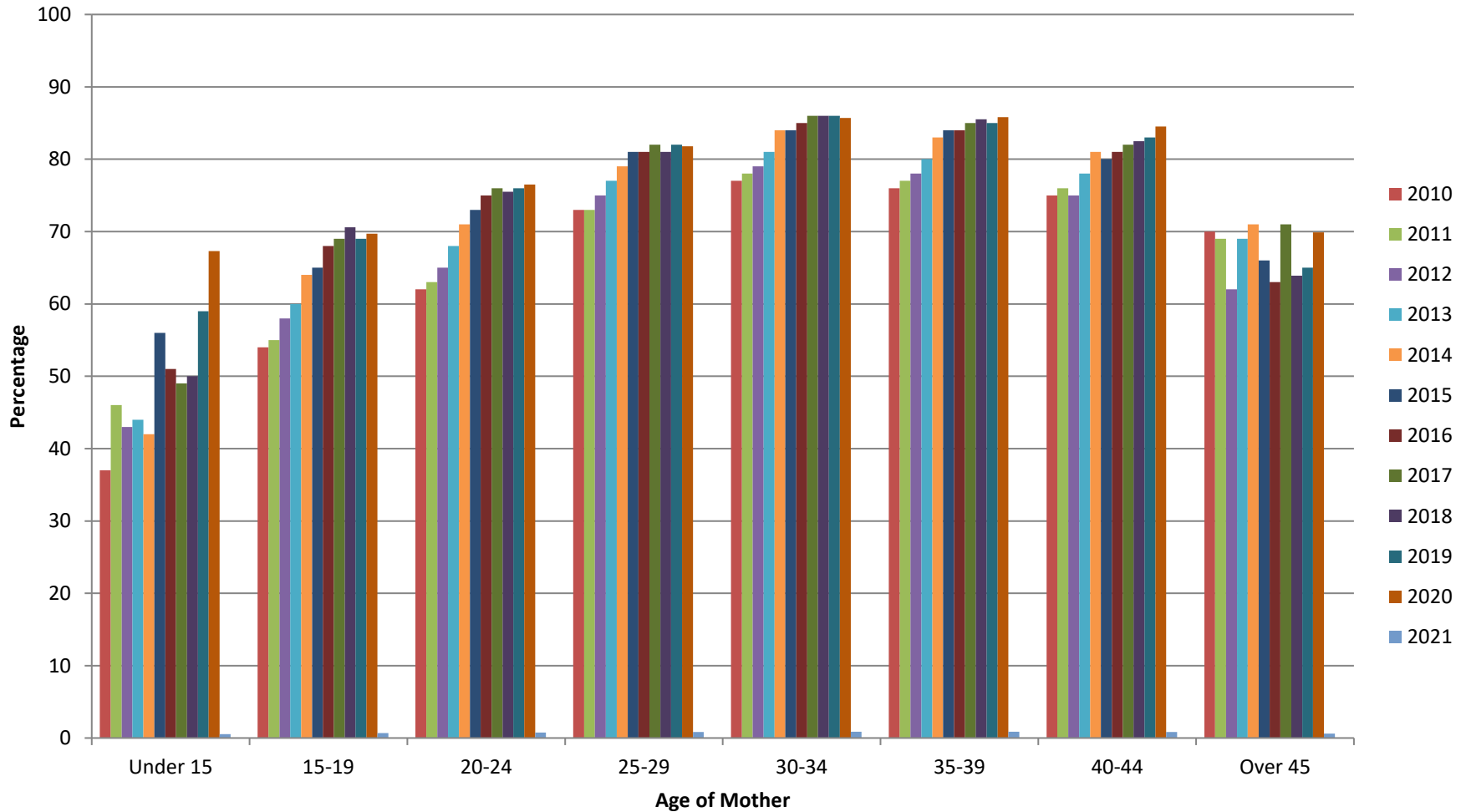
Birth certificate information is collected for both in-hospital and out-of-hospital Pennsylvania births. Each birth certificate is submitted to the Pennsylvania Department of Health, Division of Health Informatics where it is analyzed. The question: *Is newborn being breastfed?* was added to the birth certificate in 2003.

Pennsylvania Breastfeeding Initiation Rate by Age of Mother, 2010-2021

Age of Mother	2010	2011	2012	2013	2014	2015	2016	2017	2018	2019	2020	2021
Under 15	37%	46%	43%	44%	42%	56%	51%	49%	50.0%	58.9%	67.3%	53.1%
15-19	54%	55%	58%	60%	64%	65%	68%	69%	70.6%	69.0%	69.7%	68.8%
20-24	62%	63%	65%	68%	71%	73%	75%	76%	75.5%	76.4%	76.5%	76.3%
25-29	73%	73%	75%	77%	79%	81%	81%	82%	81.0%	82.1%	81.8%	82.1%
30-34	77%	78%	79%	81%	84%	84%	85%	86%	86%	86.1%	85.7%	85.6%
35-39	76%	77%	78%	80%	83%	84%	84%	85%	85.5%	85.7%	85.8%	86.5%
40-44	75%	76%	75%	78%	81%	80%	81%	82%	82.5%	83.5%	84.5%	83.1%
45 & Over	70%	69%	62%	69%	72%	66%	63%	71%	63.9%	65.2%	69.9%	62.5%
All Ages	70%	71%	73%	76%	78%	80%	81%	82%	81.8%	82.4%	82.4%	82.6%

Source: Pennsylvania Department of Health, Division of Health Informatics, Certificate of Live Birth. Provided by: Pennsylvania Breastfeeding Awareness and Support Program. Starting in 2013, calculating method changed to exclude infants not living at time of birth certificate reporting. Data excludes births from Holy Spirit Geisinger Hospital. The Department specifically disclaims responsibility for any analyses, interpretations, or conclusions.

Pennsylvania Breastfeeding Initiation Rate by Age of Mother 2010-2021



Source: Pennsylvania Department of Health, Division of Health Informatics, Certificate of Live Birth. Provided by: Pennsylvania Breastfeeding Awareness and Support Program. Starting in 2013, calculating method changed to exclude infants not living at time of birth certificate reporting. Data excludes births from Holy Spirit Geisinger Hospital. The Department specifically disclaims responsibility for any analyses, interpretations, or conclusions.