



**Bureau of Family Health
Breastfeeding Awareness and Support Program**

Birth certificate information is collected for both in-hospital and out-of-hospital Pennsylvania births. Each birth certificate is submitted to the Pennsylvania Department of Health, Division of Health Informatics where it is analyzed. The question: *Is newborn being breastfed?* was added to the birth certificate in 2003.

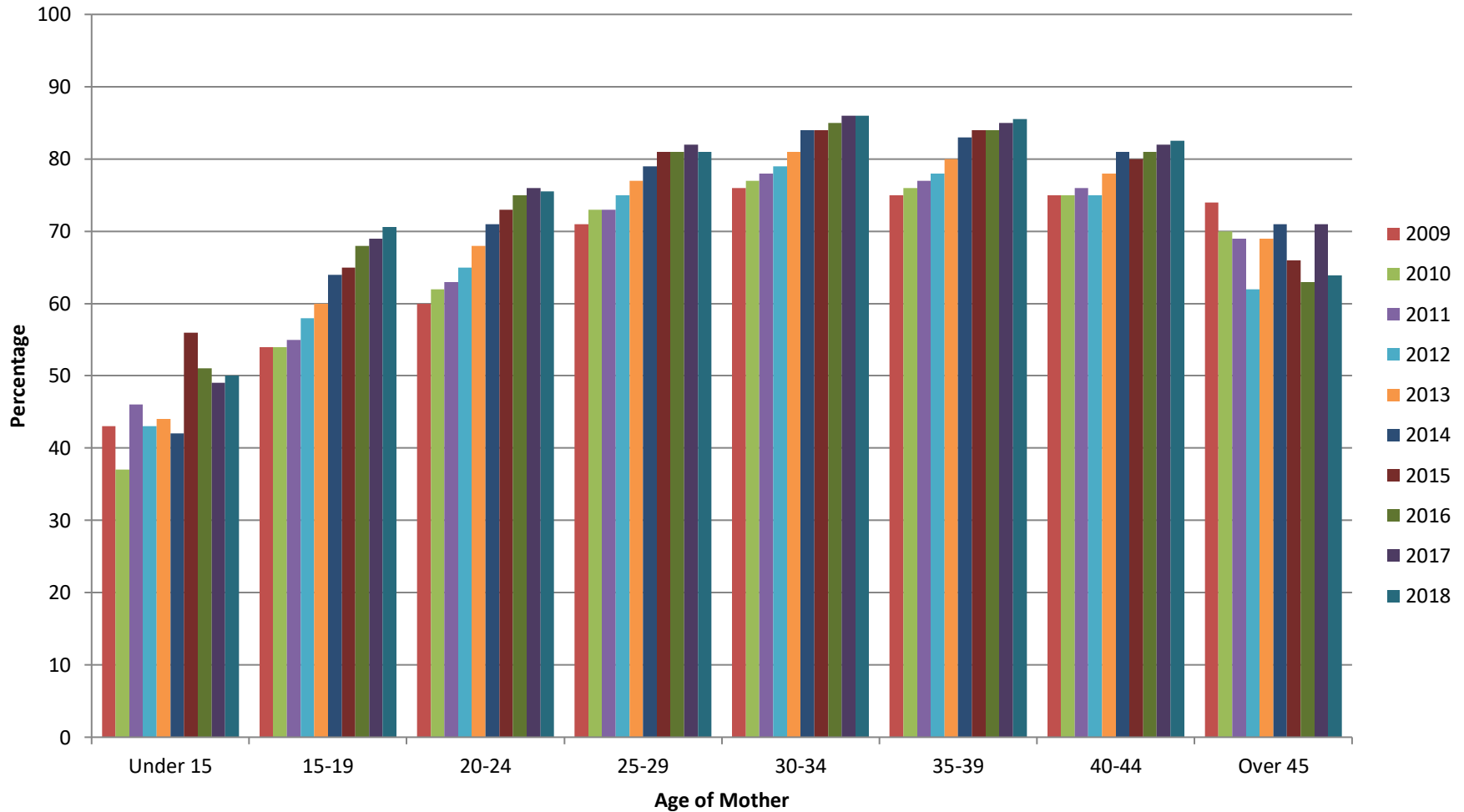
Pennsylvania Breastfeeding Initiation Rate by Age of Mother, 2009-2018

Age of Mother	2009	2010	2011	2012	2013	2014	2015	2016	2017	2018
Under 15	43%	37%	46%	43%	44%	42%	56%	51%	49%	50%
15-19	54%	54%	55%	58%	60%	64%	65%	68%	69%	70.6%
20-24	60%	62%	63%	65%	68%	71%	73%	75%	76%	75.5%
25-29	71%	73%	73%	75%	77%	79%	81%	81%	82%	81%
30-34	76%	77%	78%	79%	81%	84%	84%	85%	86%	86%
35-39	75%	76%	77%	78%	80%	83%	84%	84%	85%	85.5%
40-44	75%	75%	76%	75%	78%	81%	80%	81%	82%	82.5%
45 & Over	74%	70%	69%	62%	69%	72%	66%	63%	71%	63.9%
All Ages	68%	70%	71%	73%	76%	78%	80%	81%	82%	81.8%

Source: Pennsylvania Department of Health, Division of Health Informatics, Certificate of Live Birth. Provided by: Pennsylvania Breastfeeding Awareness and Support Program. Starting in 2013, calculating method changed to exclude infants not living at time of birth certificate reporting. The Department specifically disclaims responsibility for any analyses, interpretations or conclusions.

Pennsylvania has adopted the Healthy People 2020 breastfeeding initiation goal that 81.9% of women ever breastfed.

Pennsylvania Breastfeeding Initiation Rate by Age of Mother 2009-2018



Source: Pennsylvania Department of Health, Division of Health Informatics, Certificate of Live Birth. Provided by: Pennsylvania Breastfeeding Awareness and Support Program. Starting in 2013, calculating method changed to exclude infants not living at time of birth certificate reporting. The Department specifically disclaims responsibility for any analyses, interpretations, or conclusions.