

COVID -19 VACCINE PROVIDER

WEEKLY NEWSLETTER

8/6/2021

Highlights

Program Updates

On July 28, 2021, the U.S. Food and Drug Administration (FDA) announced the [extension to the expiration date](#) of the Janssen/Johnson & Johnson COVID-19 vaccine. The extension increased the shelf-life of this brand of vaccine from four and a half months to six months.

On 7/28/2021, the Department of Health updated the [Order Directing Vaccine Provider's administration of COVID-19 vaccines](#). Refer to the 'vaccine order update' section of this newsletter for more details.

Providers are only able to order Moderna-14 and Pfizer-450 through PA SIIS. Requests for Janssen may be entered into PA SIIS, however this vaccine is only available through redistribution. Moderna-10 has been completely phased out. Pfizer 1175 is no longer available for ordering.

Enrolled providers – please enter the **number of vaccines** instead of number of vials you want to order in PA SIIS. For example, if you want to order 140 doses, please enter 140 in the check box. This applies to all three brands of COVID-19 vaccines. After placing an order for COVID-19 vaccines in PA SIIS, please allow us two working days for review and uploading the orders to VTrcks. Once the orders are entered to VTrcks, the vaccines will be shipped and delivered within two-three business days. There are no weekend deliveries.

Data

Statewide data representing the 66 counties within the Department of Health's vaccine jurisdiction:

- Vaccine providers have administered 11,705,733 total vaccine doses as of Thursday, Aug 5.
- 5,734,642 people are fully vaccinated: with a seven-day moving average of more than 13,100 people per day receiving vaccinations.

Education

[Fact Sheet for Healthcare Providers Administering Vaccine](#)

[CDC COVID-19 Vaccine Webinar Series](#)

[CDC's COVID Vaccine Provider Education and Training](#)

[COVID-19 Vaccination Clinical and Professional Resources | CDC](#)

[CDC's COVID Vaccine Inventory Management Best Practices](#)

[CDC's COVID Vaccination Tool kit](#)

[Vaccinating Homebound Persons with COVID-19 Vaccine | CDC](#)

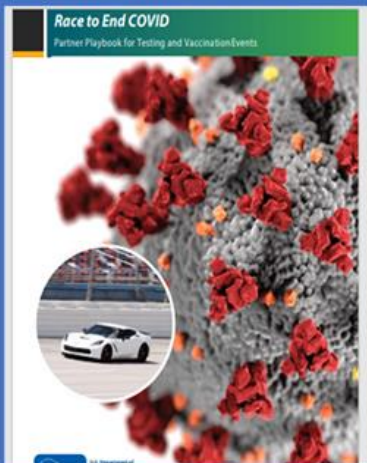
[COVID-19 Vaccine for Children and Teens \(cdc.gov\)](#)

[Communication Resources for COVID-19 Vaccines](#)

[Resources for Jurisdictions, Clinics, and Organizations](#)

[Home Page - COVID-19 VACCINE LOT NUMBER AND EXPIRATION DATES \(cdc.gov\)](#)

[Race to End Covid:
Partner Playbook for
Testing and
Vaccination Events
\(cdc.gov\)](#)



[Guidance for Implementing COVID-19 Prevention Strategies in the Context of Varying Community Transmission Levels and Vaccination Coverage | MMWR \(cdc.gov\)](#)

Communities and organizations should update COVID-19 prevention strategies based on:

Community spread 	Health system capacity 	Vaccination coverage 	Early detection of COVID-19 increases 	Populations at risk 
--	--	---	---	---

High vaccination + Low community spread = Less need for masking and other prevention strategies

CDC.GOV bit.ly/MMWR72721 MMWR

Also visit:

[Readout of the Sixth Covid-19 Health Equity Task Force Meeting | HHS.gov](#)

[HAN Archive - 00447 | Health Alert Network \(HAN\) \(cdc.gov\)](#)

[CDC/IDSA COVID-19 Clinician Call: Update on Variants & Immunity \(idsociety.org\)](#)



Vaccine Order Update

The Department of Health wants to make it easier to meet people where they are so you can offer a variety of vaccination opportunities, such as at local fairs and summer events. We are also working to ensure people follow up to get that very important second dose of Pfizer or Moderna.

In our ongoing effort to encourage people to get both doses of Pfizer and Moderna vaccine and to ease some of the burden on providers, the Department of Health on 7/28 updated the Order Directing Vaccine Providers' Administration of COVID-19 Vaccines with changes to:

1. Allow vaccine providers to put on the COVID-19 reminder card a date when the second dose should be obtained by an alternate provider, removing the requirement to return to the same vaccine provider for first and second doses.
2. Require vaccine providers to explain to a recipient how to locate another vaccine provider to get a second dose of the same vaccine at the appropriate time interval. Please be prepared to schedule and administer a second dose to individuals who request it and enter their data appropriately in PA-SIIS to ensure they are not counted twice as a first-dose recipient.
 - a. Individuals can use [Vaccines.gov](https://www.vaccines.gov) as the mapping source to find a location where they can get vaccinated, or
 - b. Text their zip code to GETVAX (438829) for English, or VACUNA (822862) for Spanish and receive three possible vaccination sites in their area, with types of vaccine available and phone numbers to call for an appointment.
3. Remove requirements to follow the Pennsylvania COVID-19 Vaccine Interim Plan and vaccine phase rollout. As vaccine is now allowed for everyone 12 years of age and older and there remain limitations due to the FDA EUA and CDC Provider Agreements, the plan and rollout reference were no longer necessary.
4. Remove language from the first and second amendments, which were relevant to Phase 1A and no longer necessary.
5. Update some language regarding first dose/second dose allocation, since DOH is now doing universal dose ordering (first and second dose are the exact same and with less demand second doses do not need to be separately allocated).
6. Incorporate relevant amendments, such as removing the 80% requirement that was already removed in amendment 4.
7. Make minor wording changes:
 - "Vaccine" is now defined to include a FDA approved COVID-19 vaccine, instead of just an EUA approved COVID-19 vaccine.
 - "Vaccine providers" is now defined so that the exemption is clear that it only applies to vaccine providers that have a provider agreement solely with the Philadelphia Department of Health.



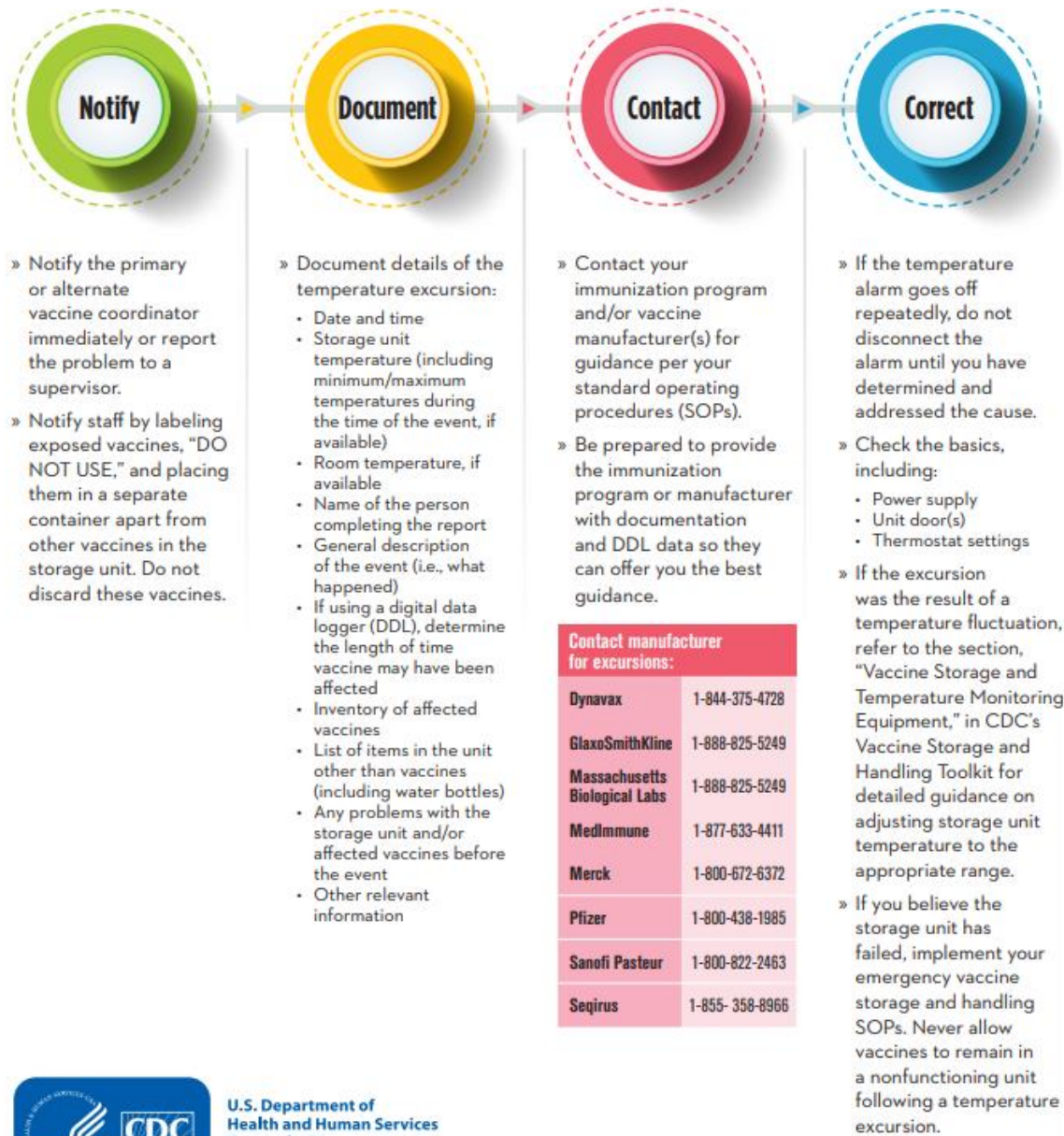
Best Practice Refresher

Transporting Vaccine in Vials and Pre drawn Syringes

- Ideally, vaccines should be delivered directly to the facility where they will be used. CDC does not recommend routine transport of vaccine vials.
- There may be circumstances where COVID-19 vaccine needs to be redistributed or transported (e.g., satellite, temporary, or off-site clinics, programs at long-term care facilities).
- If vaccines must be transported:
 - Follow the routine vaccine storage and handling transport guidance outlined in CDC's [Vaccine Storage and Handling Toolkit](#). The COVID-19 vaccine addendum includes additional specifics for COVID-19 vaccines, including:
 - Vaccine must be transported in a stable storage unit and monitored with a DDL.
 - Use CDC's [transport temperature log](#) to record temperatures and time in transport.
- Transport vaccine in vials whenever possible. Partially used vials may be transported.
- However, there may be limited instances when the only option is to transport vaccine in a provider pre drawn syringe. U.S. Pharmacopeia includes guidance for transporting provider pre drawn vaccine in syringes in the [USP COVID-19 Vaccine Toolkit: Operational Considerations for Healthcare Practitioners](#).
- Any time spent in transport MUST be included in the beyond-use dates or times for the vaccine products.

Handling Temperature Excursions

Any temperature reading outside ranges recommended in the manufacturers' package inserts is considered a temperature excursion. Identify temperature excursions quickly and take immediate action to correct them. This can prevent vaccine waste and the potential need to revaccinate patients.



U.S. Department of Health and Human Services
Centers for Disease Control and Prevention



Important Contact Information

- McKesson Customer Service: 1-833-272-6634 or SNSSupport@McKesson.com
- Pfizer Customer Service: (800) 666-7248 or cvgovernment@pfizer.com
- Moderna Customer Service: 1-866-MOD-ERNA or 1-866-663-3762
- Janssen Customer Service: 1-800-565-4008 or JSCCOVIDTEMPEXCURSION@its.inj.com

Calendar of Upcoming Events

Therapeutic Options to Prevent Severe COVID-19 in Immunocompromised People

Date: Thursday, August 12, 2021 Time: 2:00–3:00 P.M. ET

[CDC/IDSA Clinician COVID-19 Call](#)

Date: Aug 14th Time: 3 pm ET

[COVID-19 Vaccine All Provider Call](#)

Date: Aug 20th Time: 12 – 12:30 pm

Contact Us

For PA SIIS related inquiries

email: RA-DHPASIIS@PA.GOV Phone: 1- 877-774-4748

For all other COVID-19 vaccine related inquiries

email: RA-DHCOVIDVAX@PA.GOV Phone:1-877-724-3258

Print Resources

[COVID Resources Order Form | PA.GOV](#)

[Print Resources | CDC](#)