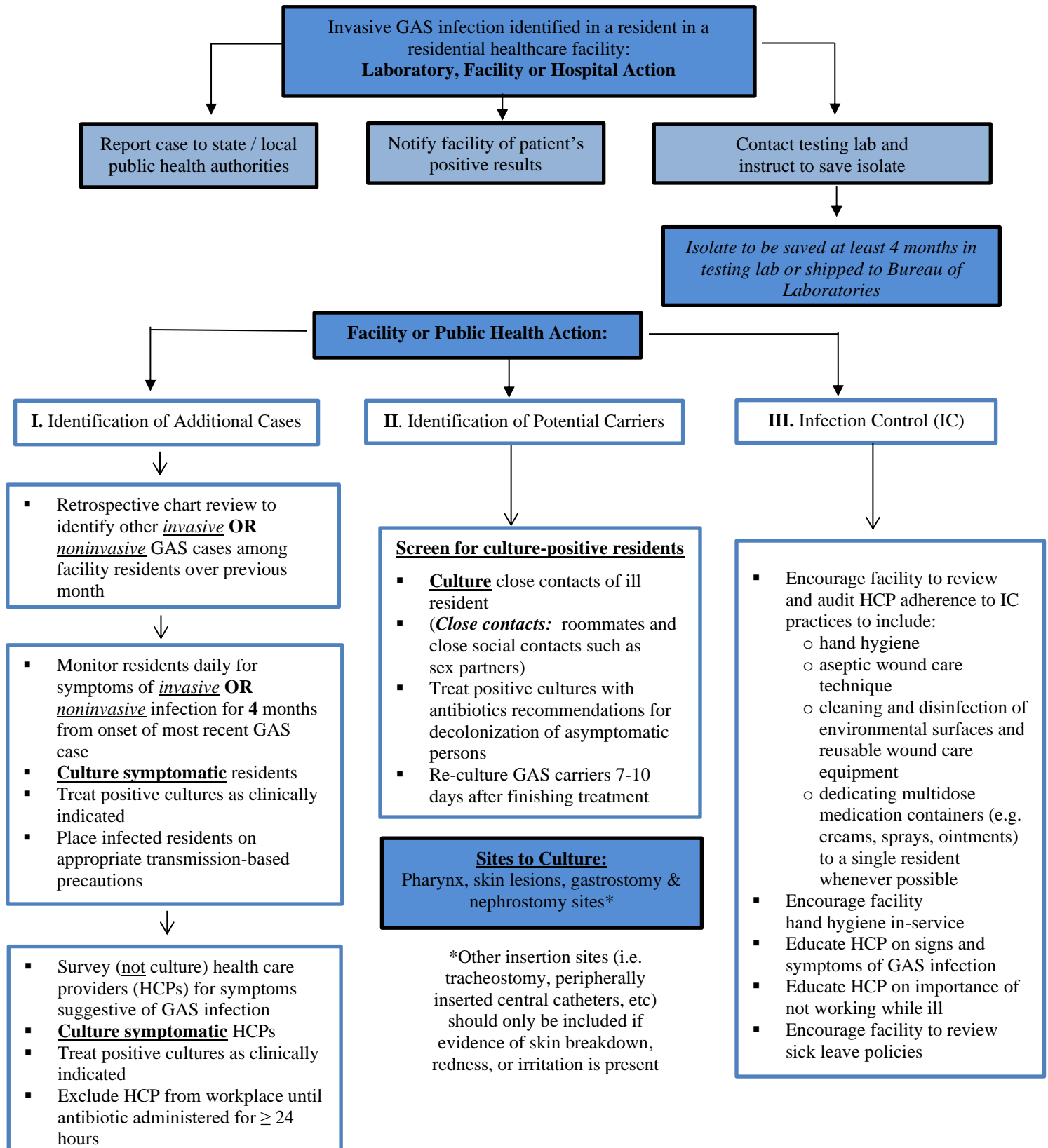




## Investigation of One Culture-Confirmed Invasive Group A Streptococcus (GAS) Infection

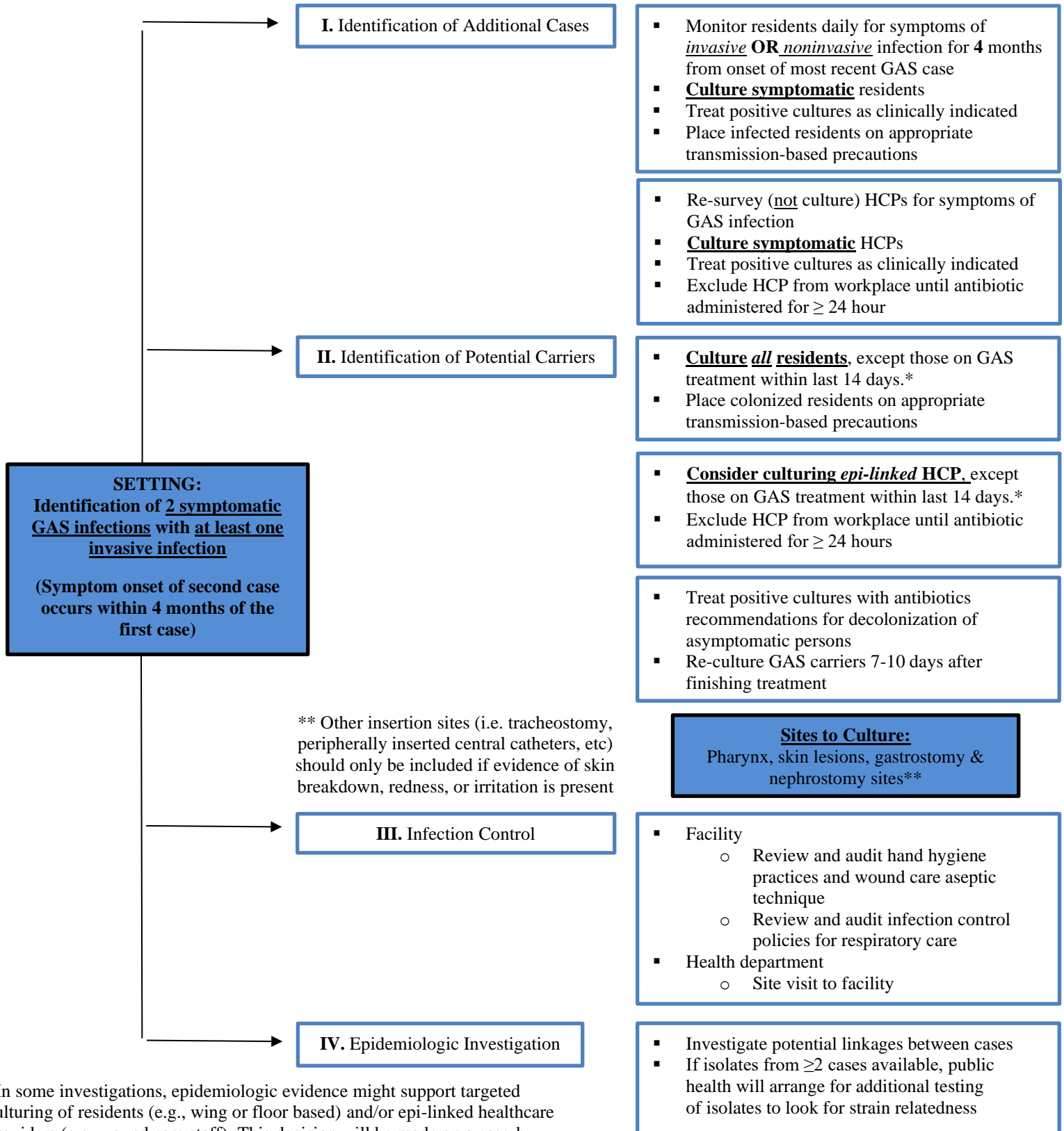
Given the potential severity of GAS in residential healthcare facilities, **even one case of invasive GAS** should prompt an epidemiological investigation by the facility and the health department.



## Investigation of Two Culture-Confirmed Symptomatic Cases of GAS Infection

As outlined in the investigation of a single culture-confirmed case, the laboratory or hospital identifying the positive culture result should inform the facility as well as the health department.

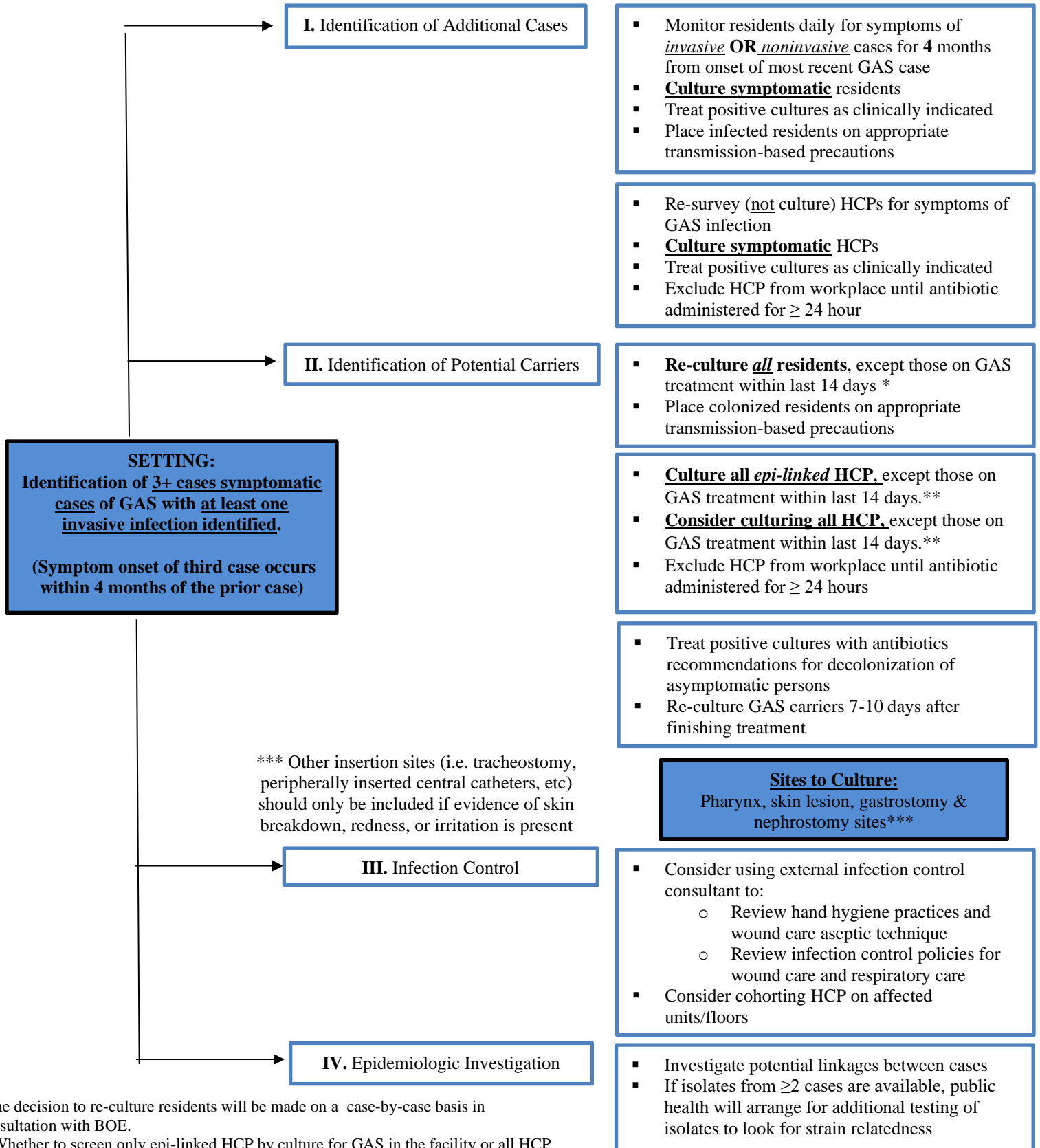
**Save all GAS isolates to send to public health laboratory**



\*In some investigations, epidemiologic evidence might support targeted culturing of residents (e.g., wing or floor based) and/or epi-linked healthcare providers (e.g. wound care staff). This decision will be made on a case-by-case basis in consultation with Bureau of Epidemiology.

## Investigation of Three or More Symptomatic Culture-Confirmed Cases of GAS

Continue steps outlined in algorithms for one or two cases: **1) notify facility of patient 2) notify health department of all new cases 3) save all GAS isolates to send to public health laboratory**



\*The decision to re-culture residents will be made on a case-by-case basis in consultation with BOE.

\*\*Whether to screen only epi-linked HCP by culture for GAS in the facility or all HCP is a decision that should be made on a case-by-case basis in consultation with BOE