

**PENNSYLVANIA WEEKLY INFLUENZA REPORT
INFORMATION FROM 29SEP19 THROUGH 26SEP20**

SEASON-TO-DATE INFLUENZA CASE COUNTS BY COUNTY AND INFLUENZA TYPE

County	Influenza Type			TOTAL
	A	B	U	
	179	173	4	356
ADAMS	762	1272	.	2034
ALLEGHENY	6247	6375	1269	13891
ARMSTRONG	350	362	.	712
BEAVER	1192	1477	259	2928
BEDFORD	186	425	.	611
BERKS	1586	2709	3	4298
BLAIR	588	1064	.	1652
BRADFORD	623	701	.	1324
BUCKS	2055	1549	.	3604
BUTLER	668	635	.	1303
CAMBRIA	720	1070	.	1790
CAMERON	14	31	.	45
CARBON	436	292	.	728
CENTRE	880	1367	.	2247
CHESTER	2072	1694	4	3770
CLARION	109	118	.	227
CLEARFIELD	649	634	.	1283
CLINTON	193	201	.	394
COLUMBIA	137	155	.	292
CRAWFORD	663	941	.	1604
CUMBERLAND	1129	1534	1	2664
DAUPHIN	1544	1839	1	3384
DELAWARE	2979	2255	33	5267
ELK	274	444	.	718
ERIE	2260	2290	.	4550
FAYETTE	737	889	.	1626
FOREST	6	3	.	9
FRANKLIN	567	421	.	988
FULTON	179	192	.	371
GREENE	248	316	.	564
HUNTINGDON	309	383	.	692
INDIANA	392	498	.	890
JEFFERSON	286	410	.	696
JUNIATA	98	47	.	145

(Continued)

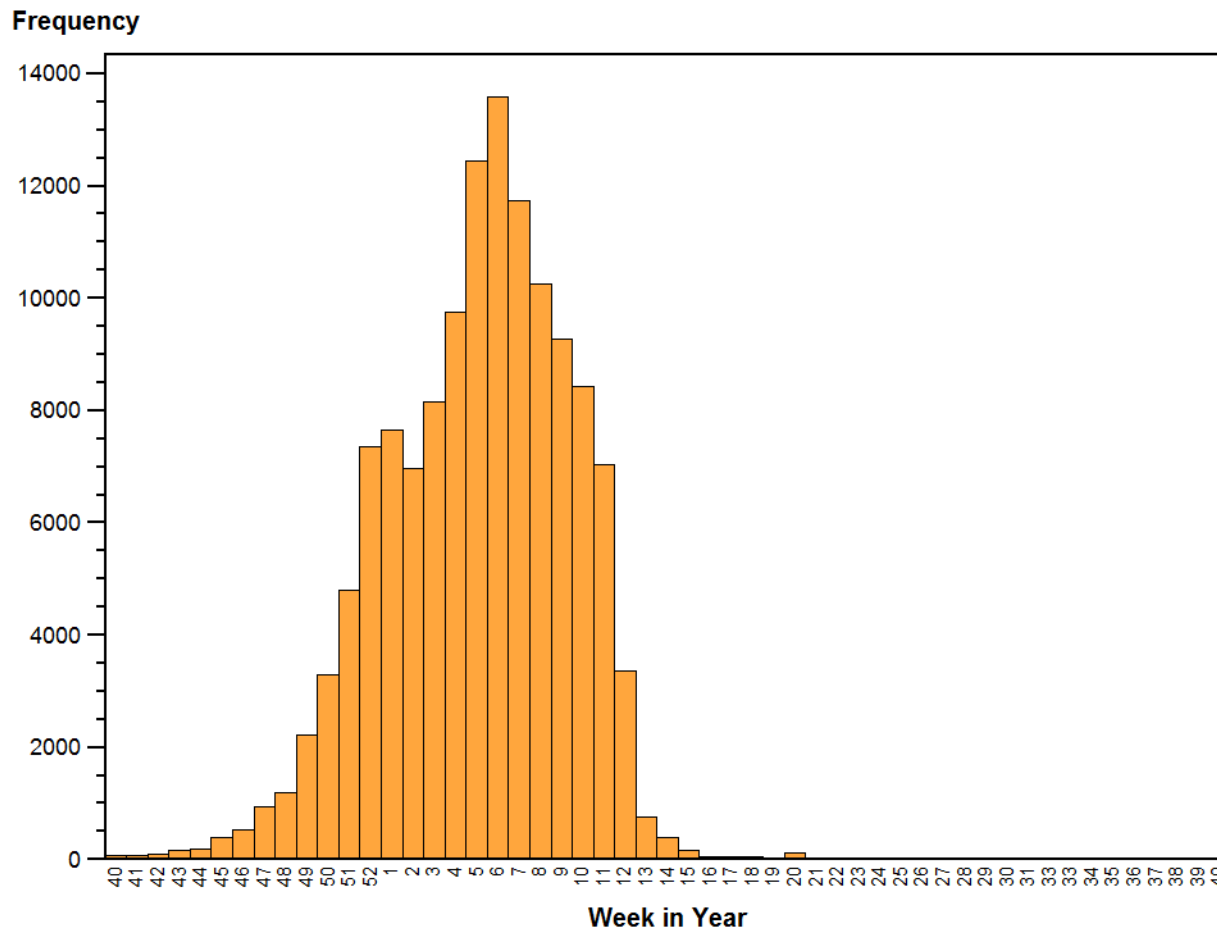
**PENNSYLVANIA WEEKLY INFLUENZA REPORT
INFORMATION FROM 29SEP19 THROUGH 26SEP20**

SEASON-TO-DATE INFLUENZA CASE COUNTS BY COUNTY AND INFLUENZA TYPE

County	Influenza Type			TOTAL
	A	B	U	
LACKAWANNA	1169	1071	1	2241
LANCASTER	1271	1519	.	2790
LAWRENCE	268	203	.	471
LEBANON	587	660	.	1247
LEHIGH	2397	2291	195	4883
LUZERNE	1938	1825	5	3768
LYCOMING	793	521	.	1314
MCKEAN	327	233	.	560
MERCER	400	425	.	825
MIFFLIN	255	179	11	445
MONROE	1022	1160	.	2182
MONTGOMERY	5197	4266	252	9715
MONTOUR	80	61	.	141
NORTHAMPTON	2800	2648	.	5448
NORTHUMBERLAND	385	480	.	865
PERRY	207	266	.	473
PHILADELPHIA	4334	3328	8	7670
PIKE	198	190	.	388
POTTER	212	325	.	537
SCHUYLKILL	856	1355	.	2211
SNYDER	224	282	9	515
SOMERSET	231	252	2	485
SULLIVAN	21	18	.	39
SUSQUEHANNA	185	142	.	327
TIOGA	138	180	.	318
UNION	281	215	.	496
VENANGO	100	87	.	187
WARREN	389	234	.	623
WASHINGTON	1167	1216	2	2385
WAYNE	670	713	.	1383
WESTMORELAND	1608	2060	2	3670
WYOMING	91	59	.	150
YORK	1915	2927	31	4873
All	63033	66157	2092	131282

**PENNSYLVANIA WEEKLY INFLUENZA REPORT
INFORMATION FROM 29SEP19 THROUGH 26SEP20**

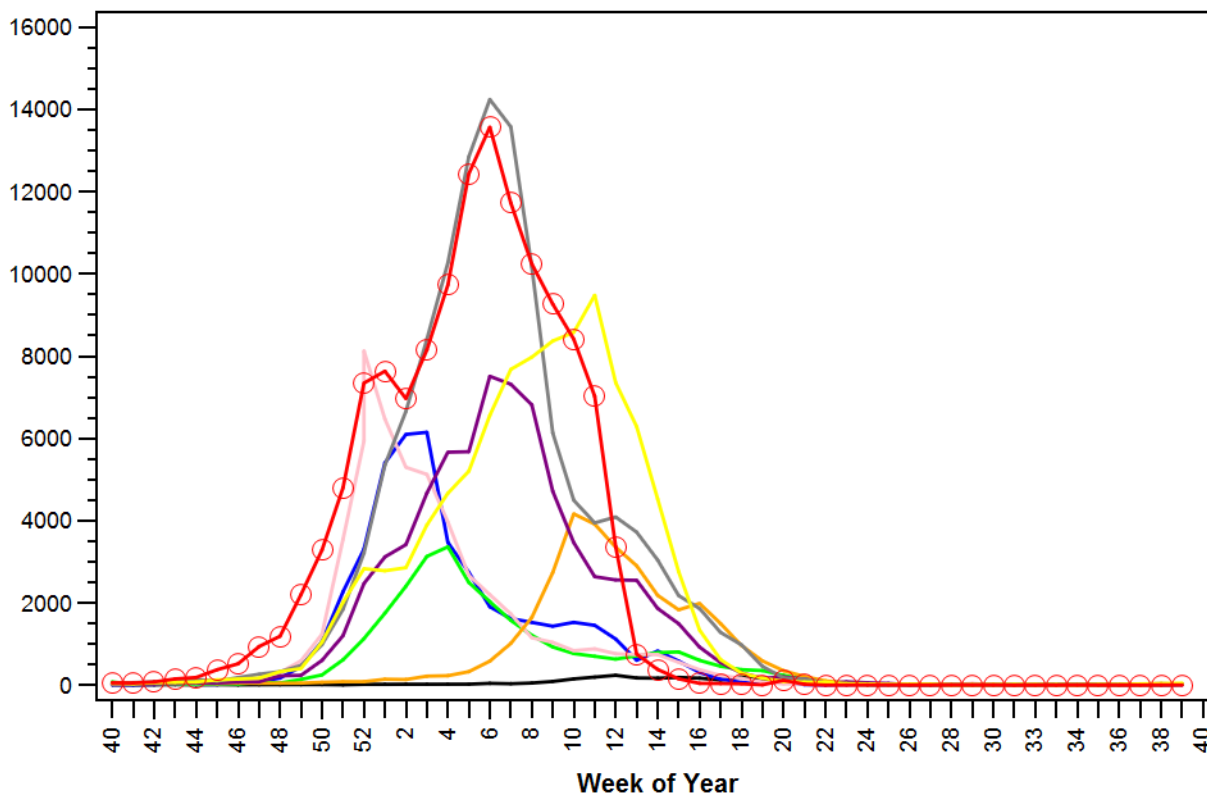
**NUMBER OF PA INFLUENZA CASES (ANTIGEN, CULTURE, OR PCR POSITIVE), BY WEEK OF
FIRST REPORT**



PENNSYLVANIA WEEKLY INFLUENZA REPORT INFORMATION FROM 29SEP19 THROUGH 26SEP20

COMPARISON OF PA-NEDSS INFLUENZA CASES (ALL TYPES) IN CURRENT SEASON TO THE 8 PREVIOUS SEASONS

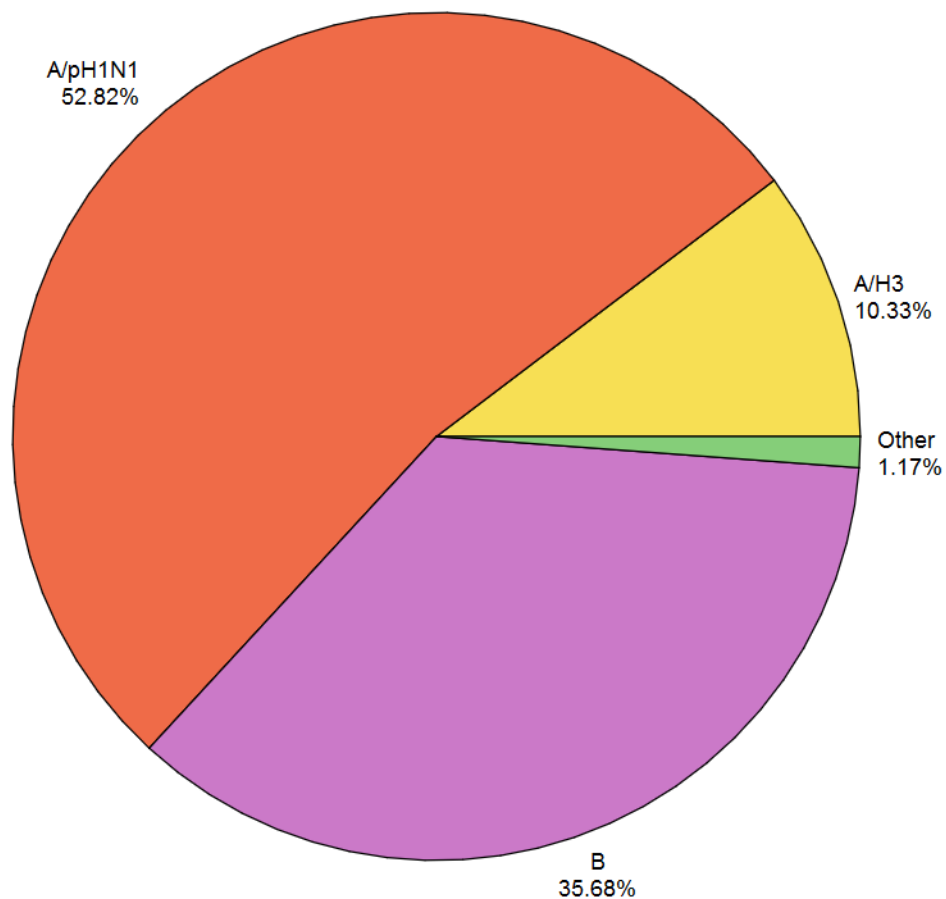
Number of Cases



Influenza Season — 2011-2012 — 2012-2013 — 2013-2014 — 2014-2015 — 2015-2016
— 2016-2017 — 2017-2018 — 2018-2019 — 2019-2020

**PENNSYLVANIA WEEKLY INFLUENZA REPORT
INFORMATION FROM 29SEP19 THROUGH 26SEP20**

SEASON-TO-DATE INFLUENZA SUB-TYPING RESULTS FROM STATE PUBLIC HEALTH LAB



**PENNSYLVANIA WEEKLY INFLUENZA REPORT
INFORMATION FROM 29SEP19 THROUGH 26SEP20**

SEASON-TO-DATE INFLUENZA-ASSOCIATED DEATHS BY AGE

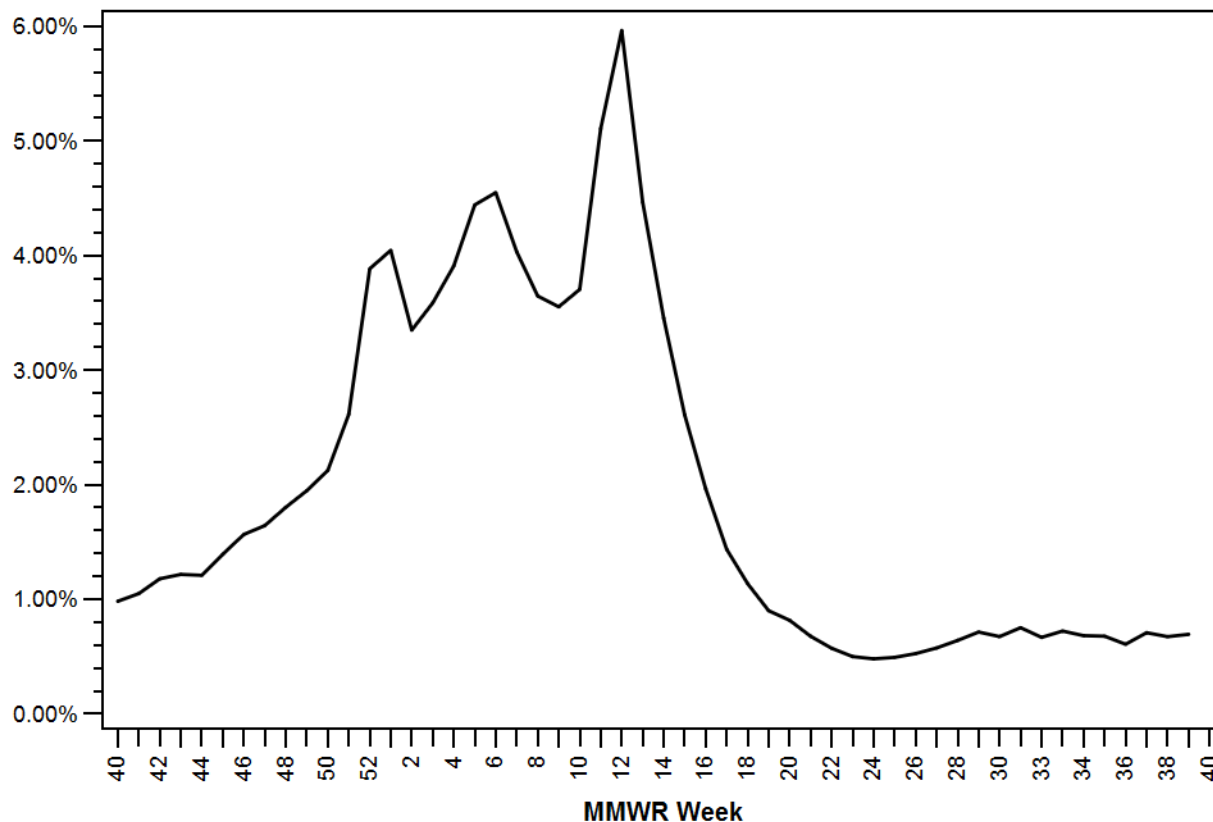
	Influenza-associated deaths
AGE	
05-18	1
19-49	12
50-64	34
65+	151
All	198

PENNSYLVANIA WEEKLY INFLUENZA REPORT INFORMATION FROM 29SEP19 THROUGH 26SEP20

PERCENT OF EMERGENCY DEPARTMENT VISITS WITH INFLUENZA-LIKE ILLNESS (ILI*) AS REASON FOR VISIT

Statewide, By Week of Emergency Department Visit

Percent of ED Visits for ILI



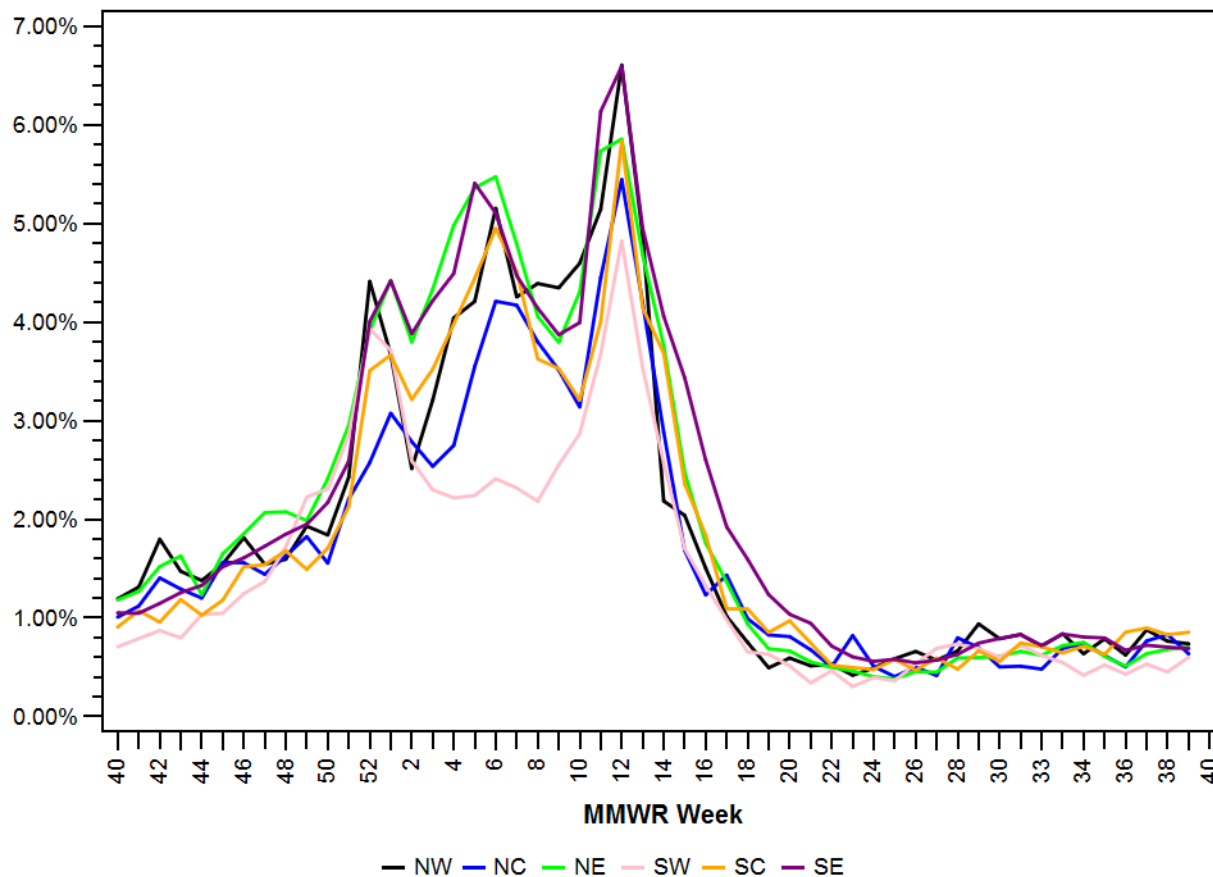
Influenza Season — 2019-2020

**ILI defined as presence of fever and (cough or sore throat) syndromes, or specific reference to flu ED data obtained daily from 146 Emergency Departments across Pennsylvania*

**PENNSYLVANIA WEEKLY INFLUENZA REPORT
 INFORMATION FROM 29SEP19 THROUGH 26SEP20**

**PERCENT OF EMERGENCY DEPARTMENT VISITS WITH INFLUENZA-LIKE ILLNESS (ILI*) AS
 REASON FOR VISIT
 By Region and Week of Emergency Department Visit**

Percent of ED Visits for ILI

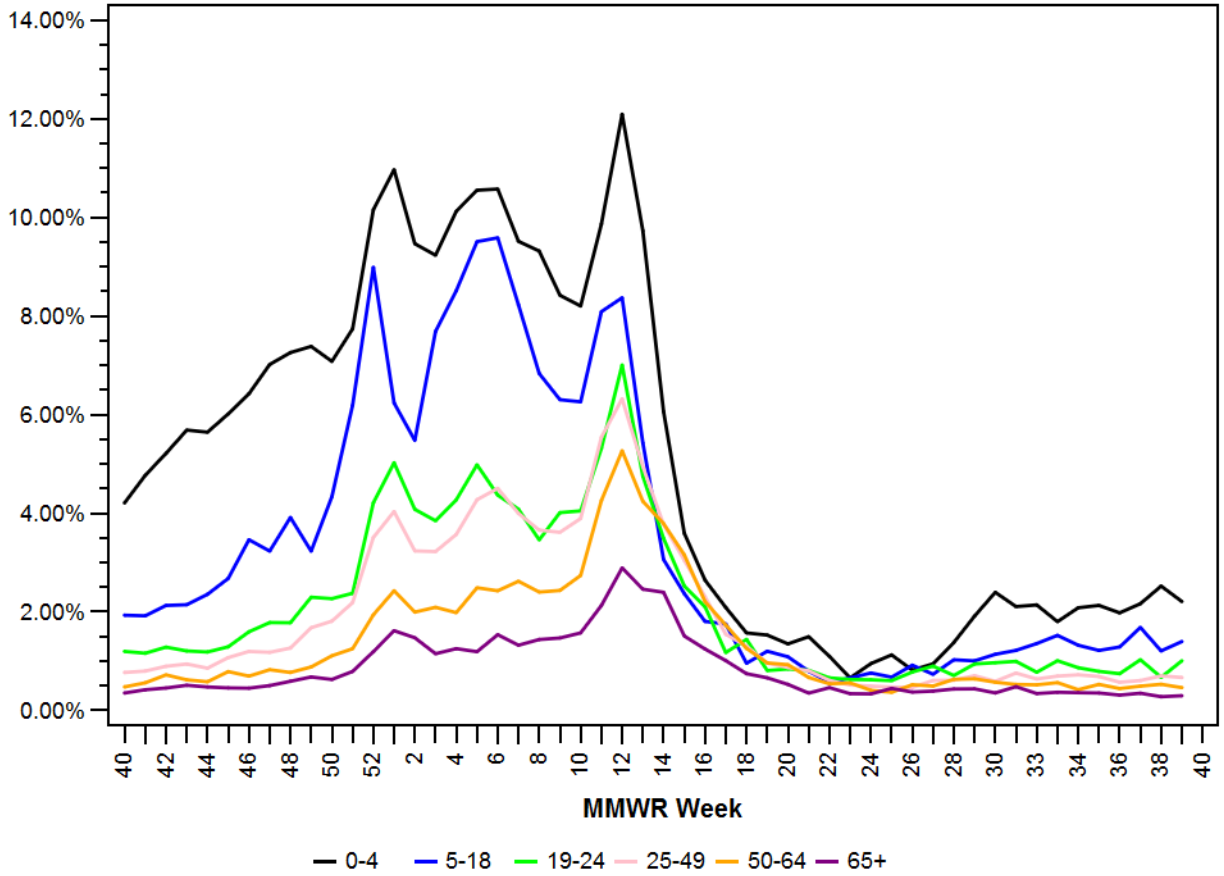


**ILI defined as presence of fever and (cough or sore throat) syndromes, or specific reference to flu ED data obtained daily from 146 Emergency Departments across Pennsylvania*

PENNSYLVANIA WEEKLY INFLUENZA REPORT INFORMATION FROM 29SEP19 THROUGH 26SEP20

PERCENT OF EMERGENCY DEPARTMENT VISITS WITH INFLUENZA-LIKE ILLNESS (ILI*) AS REASON FOR VISIT By Age Group and Week of Emergency Department Visit

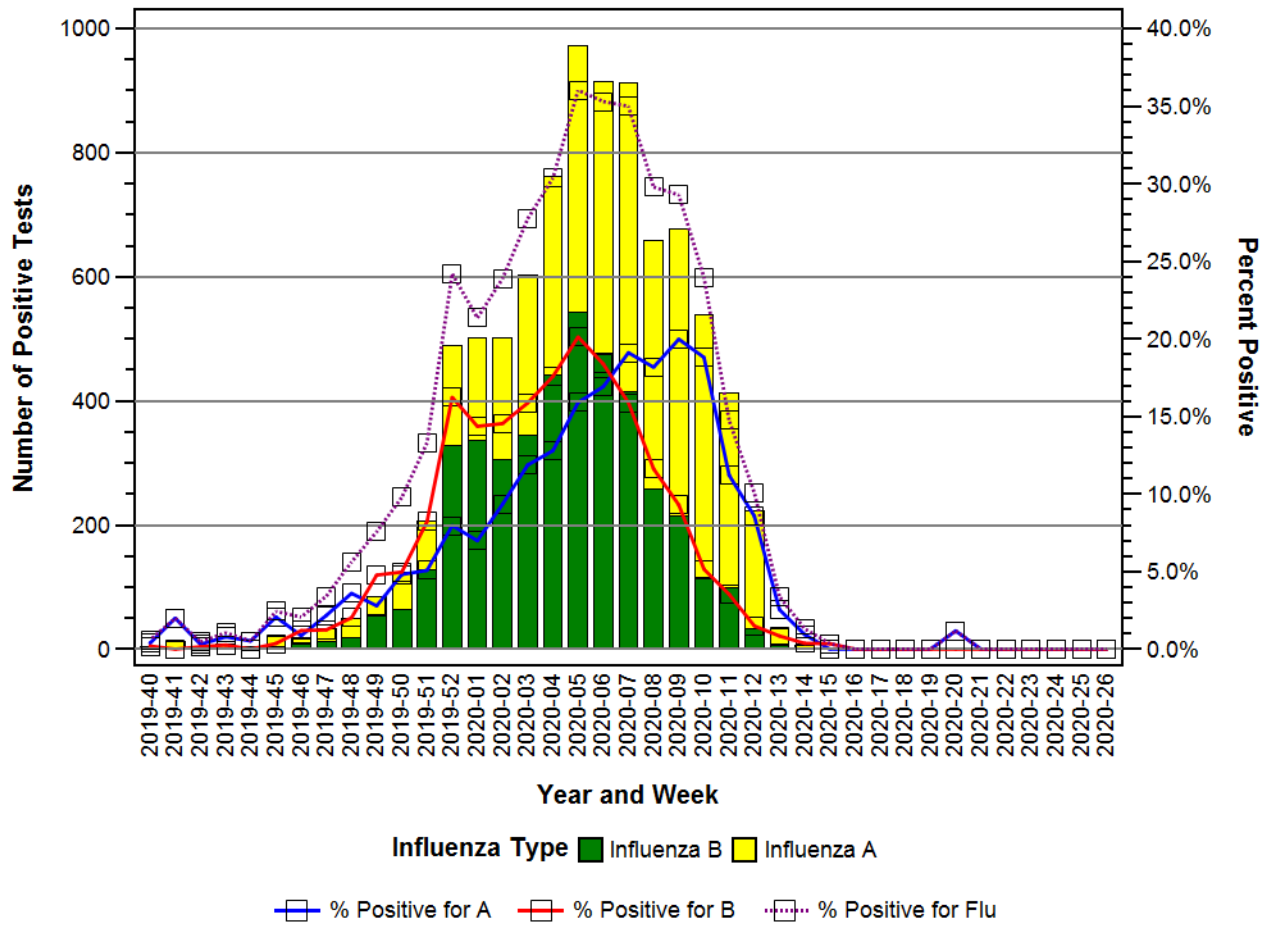
Percent of ED Visits for ILI



**ILI defined as presence of fever and (cough or sore throat) syndromes, or specific reference to flu ED data obtained daily from 146 Emergency Departments across Pennsylvania*

PENNSYLVANIA WEEKLY INFLUENZA REPORT INFORMATION FROM 29SEP19 THROUGH 26SEP20

Influenza Test Results Reported to the National Respiratory and Enteric Virus Surveillance System (NREVSS) Select Pennsylvania Laboratories, Season to date



**ILI defined as presence of fever and (cough or sore throat) syndromes, or specific reference to flu ED data obtained daily from 146 Emergency Departments across Pennsylvania*