

**PENNSYLVANIA WEEKLY INFLUENZA REPORT
INFORMATION FROM 29SEP19 THROUGH 26SEP20**

SEASON-TO-DATE INFLUENZA CASE COUNTS BY COUNTY AND INFLUENZA TYPE

	Influenza Type			TOTAL
	A	B	U	
County				
	179	173	4	356
ADAMS	762	1272	.	2034
ALLEGHENY	6247	6375	1269	13891
ARMSTRONG	350	362	.	712
BEAVER	1192	1477	259	2928
BEDFORD	186	425	.	611
BERKS	1586	2709	3	4298
BLAIR	588	1064	.	1652
BRADFORD	623	701	.	1324
BUCKS	2055	1549	.	3604
BUTLER	668	635	.	1303
CAMBRIA	720	1070	.	1790
CAMERON	14	31	.	45
CARBON	436	292	.	728
CENTRE	880	1367	.	2247
CHESTER	2072	1694	4	3770
CLARION	109	118	.	227
CLEARFIELD	649	634	.	1283
CLINTON	193	201	.	394
COLUMBIA	137	155	.	292
CRAWFORD	663	941	.	1604
CUMBERLAND	1129	1534	1	2664
DAUPHIN	1544	1839	1	3384
DELAWARE	2979	2255	33	5267
ELK	274	444	.	718
ERIE	2260	2290	.	4550
FAYETTE	737	889	.	1626
FOREST	6	3	.	9
FRANKLIN	567	421	.	988
FULTON	179	192	.	371
GREENE	248	316	.	564
HUNTINGDON	309	383	.	692
INDIANA	392	498	.	890
JEFFERSON	286	410	.	696
JUNIATA	98	47	.	145

(Continued)

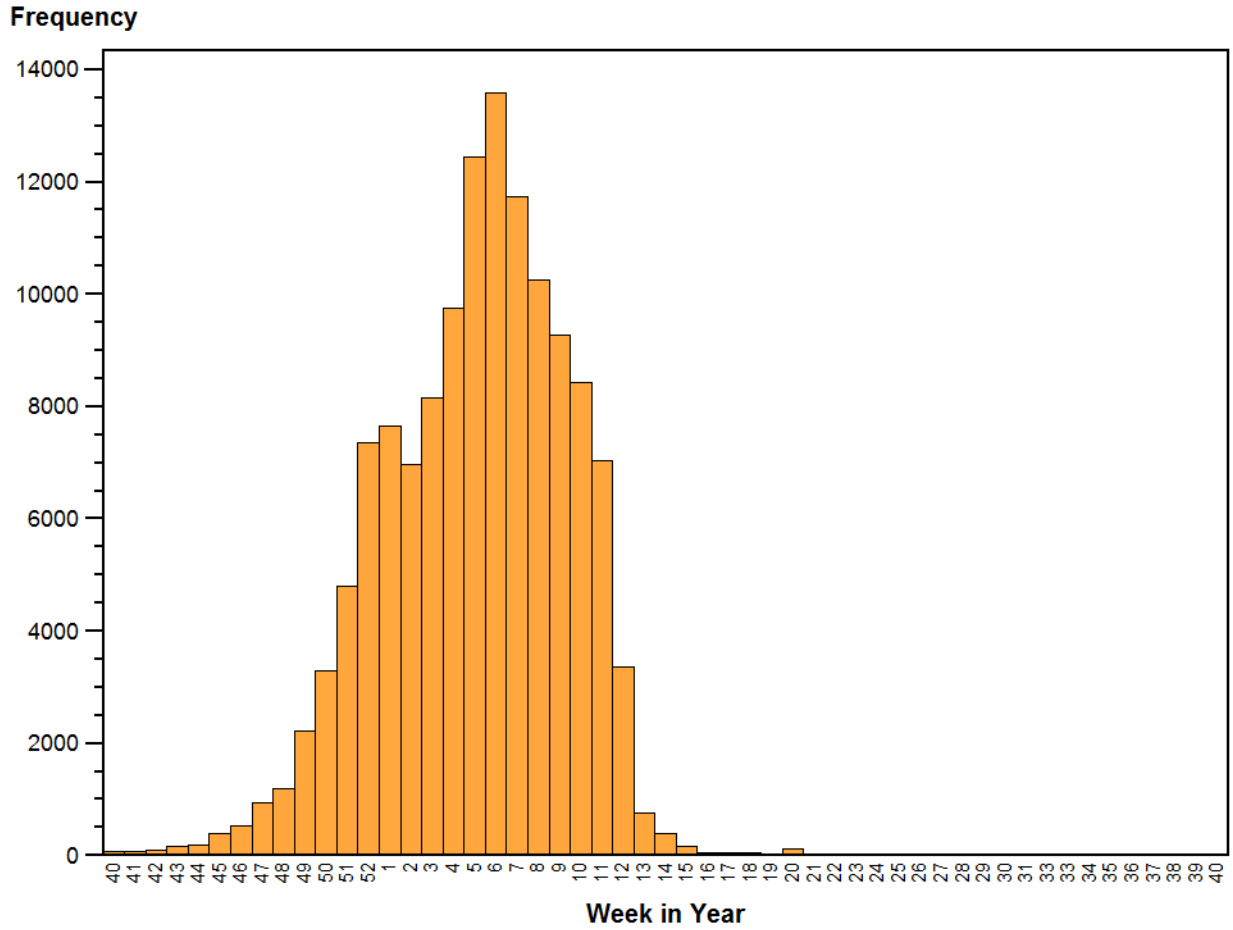
**PENNSYLVANIA WEEKLY INFLUENZA REPORT
INFORMATION FROM 29SEP19 THROUGH 26SEP20**

SEASON-TO-DATE INFLUENZA CASE COUNTS BY COUNTY AND INFLUENZA TYPE

	Influenza Type			TOTAL
	A	B	U	
County				
LACKAWANNA	1169	1071	1	2241
LANCASTER	1271	1519	.	2790
LAWRENCE	268	203	.	471
LEBANON	587	660	.	1247
LEHIGH	2397	2291	195	4883
LUZERNE	1938	1825	5	3768
LYCOMING	793	521	.	1314
MCKEAN	327	233	.	560
MERCER	400	425	.	825
MIFFLIN	255	179	11	445
MONROE	1022	1160	.	2182
MONTGOMERY	5197	4266	252	9715
MONTOUR	80	61	.	141
NORTHAMPTON	2800	2648	.	5448
NORTHUMBERLAND	385	480	.	865
PERRY	207	266	.	473
PHILADELPHIA	4334	3328	8	7670
PIKE	198	190	.	388
POTTER	212	325	.	537
SCHUYLKILL	856	1355	.	2211
SNYDER	224	282	9	515
SOMERSET	231	252	2	485
SULLIVAN	21	18	.	39
SUSQUEHANNA	185	142	.	327
TIOGA	138	180	.	318
UNION	281	215	.	496
VENANGO	100	87	.	187
WARREN	389	234	.	623
WASHINGTON	1167	1216	2	2385
WAYNE	670	713	.	1383
WESTMORELAND	1608	2060	2	3670
WYOMING	91	59	.	150
YORK	1915	2927	31	4873
All	63033	66157	2092	131282

PENNSYLVANIA WEEKLY INFLUENZA REPORT INFORMATION FROM 29SEP19 THROUGH 26SEP20

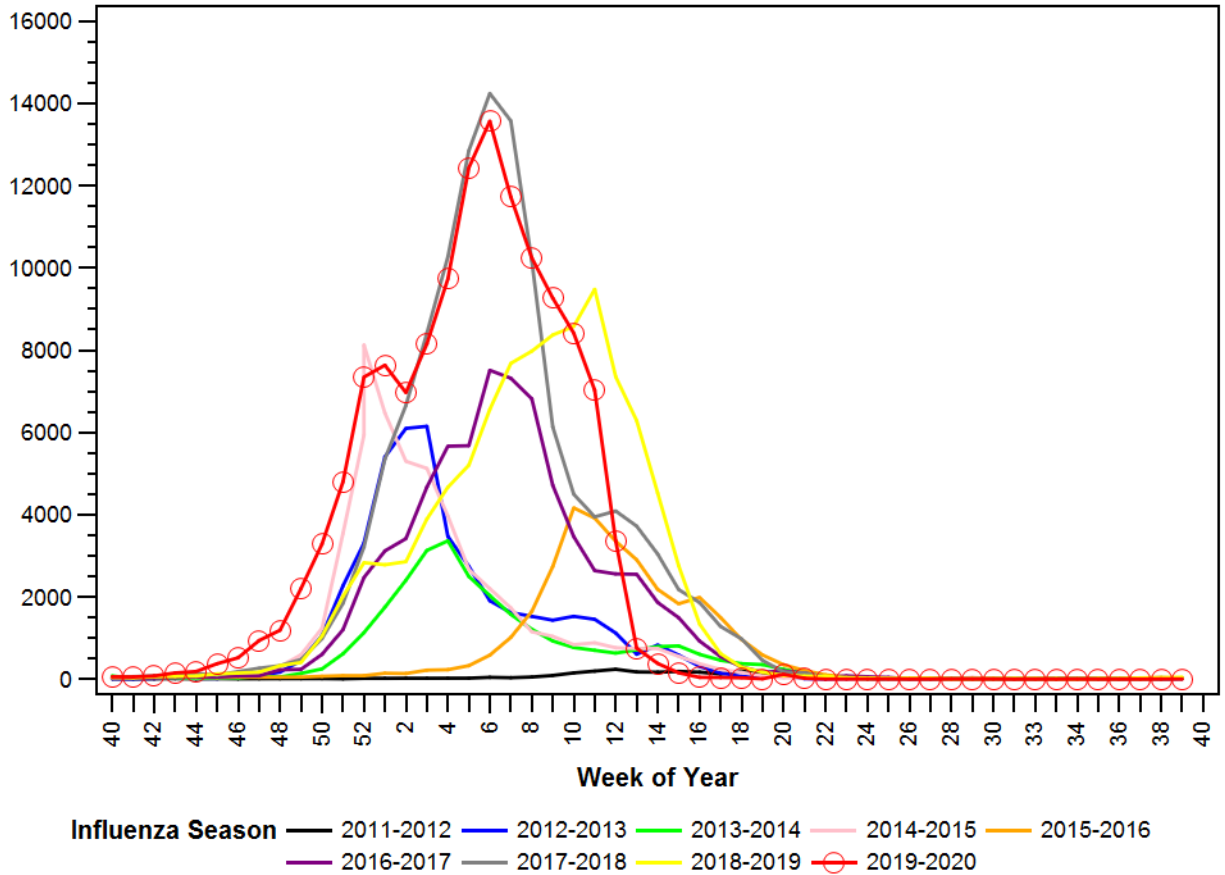
NUMBER OF PA INFLUENZA CASES (ANTIGEN, CULTURE, OR PCR POSITIVE), BY WEEK OF FIRST REPORT



PENNSYLVANIA WEEKLY INFLUENZA REPORT INFORMATION FROM 29SEP19 THROUGH 26SEP20

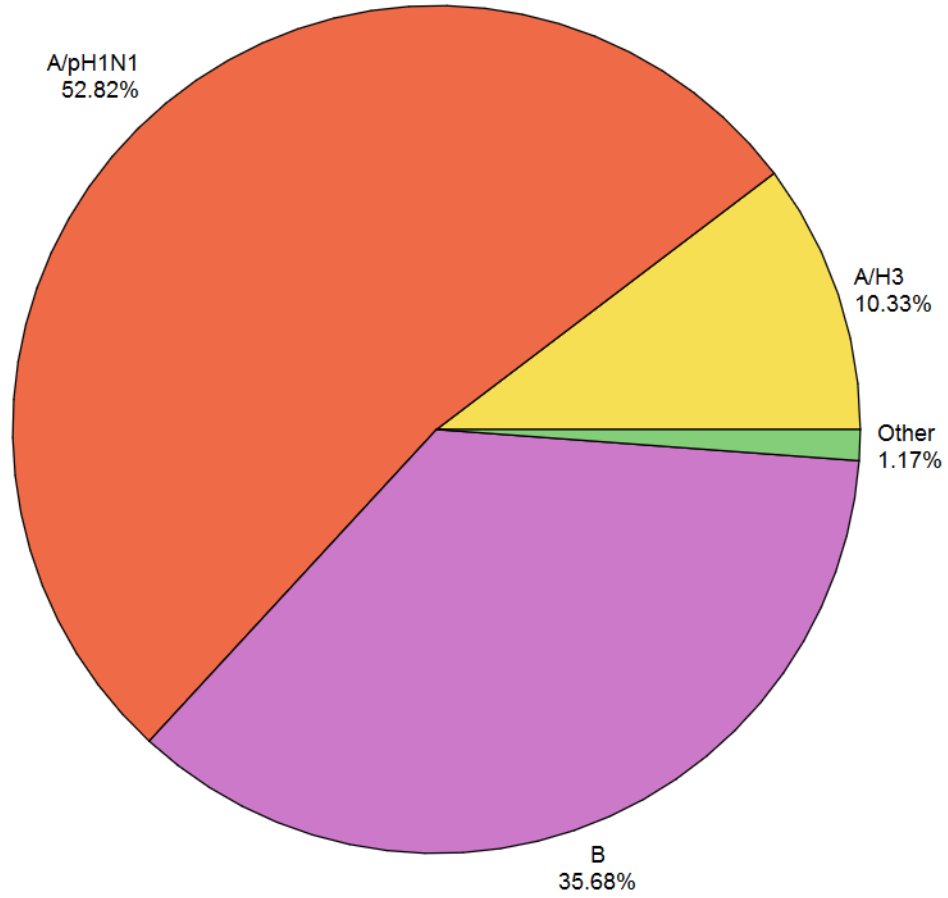
COMPARISON OF PA-NEDSS INFLUENZA CASES (ALL TYPES) IN CURRENT SEASON TO THE 8 PREVIOUS SEASONS

Number of Cases



PENNSYLVANIA WEEKLY INFLUENZA REPORT INFORMATION FROM 29SEP19 THROUGH 26SEP20

SEASON-TO-DATE INFLUENZA SUB-TYPING RESULTS FROM STATE PUBLIC HEALTH LAB



**PENNSYLVANIA WEEKLY INFLUENZA REPORT
INFORMATION FROM 29SEP19 THROUGH 26SEP20**

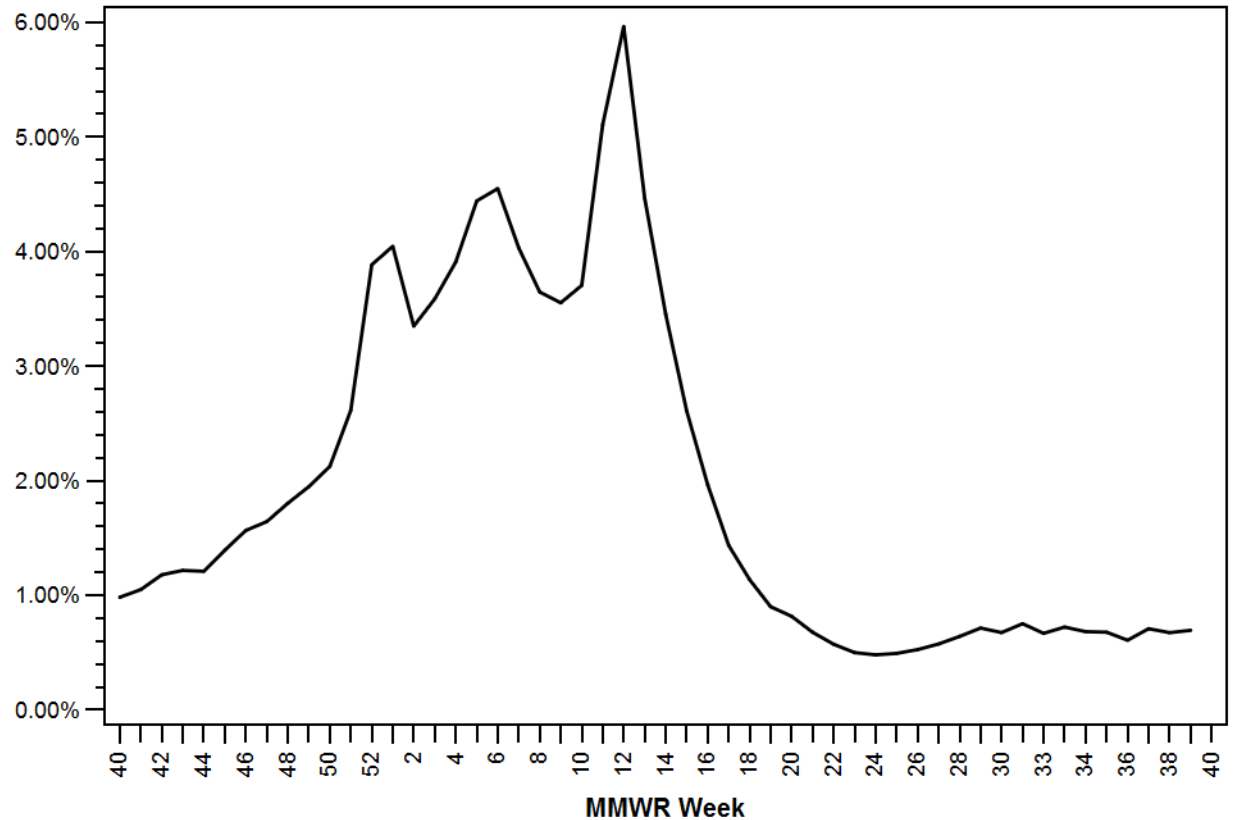
SEASON-TO-DATE INFLUENZA-ASSOCIATED DEATHS BY AGE

	Influenza-associated deaths
AGE	
05-9	2
25-49	12
50-64	34
65+	151
All	199

**PENNSYLVANIA WEEKLY INFLUENZA REPORT
INFORMATION FROM 29SEP19 THROUGH 26SEP20**

**PERCENT OF EMERGENCY DEPARTMENT VISITS WITH INFLUENZA-LIKE ILLNESS (ILI*) AS
REASON FOR VISIT
Statewide, By Week of Emergency Department Visit**

Percent of ED Visits for ILI



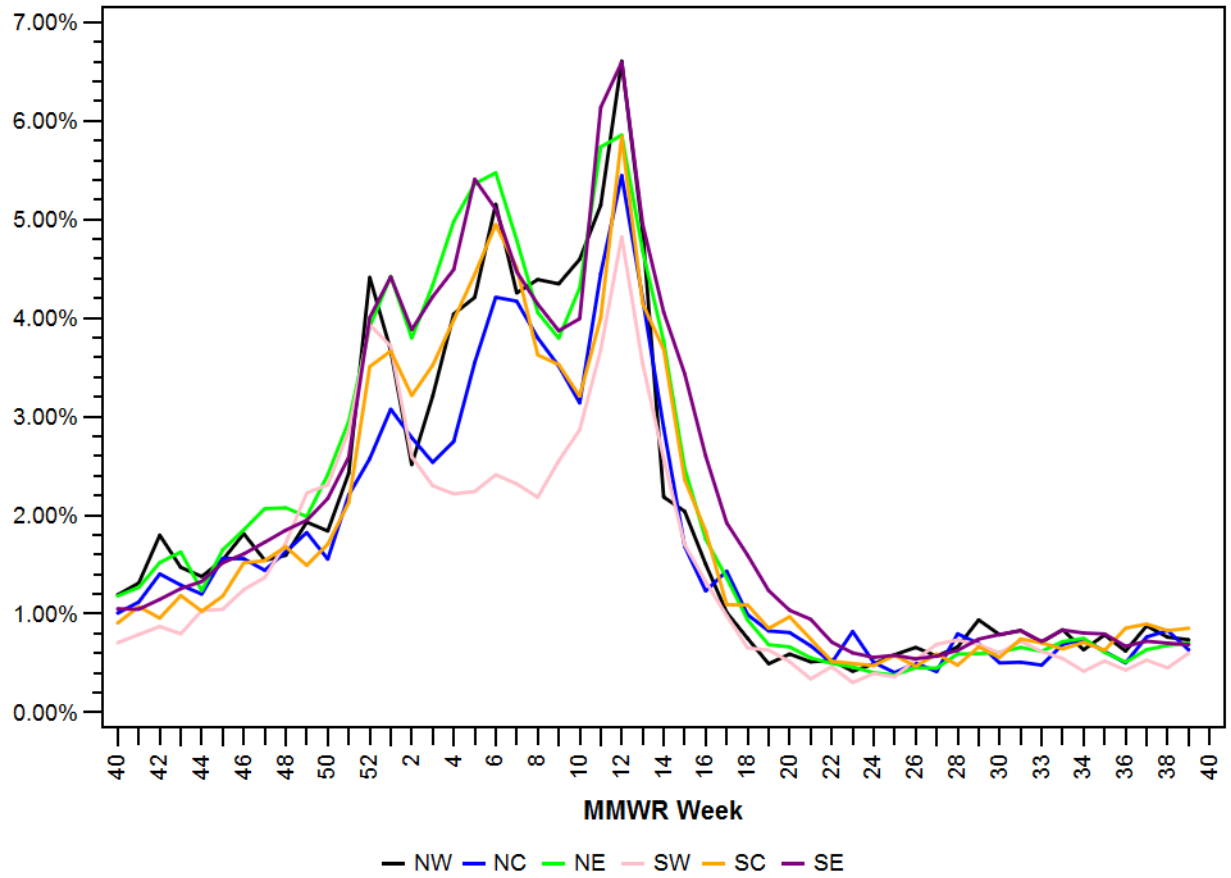
Influenza Season — 2019-2020

**ILI defined as presence of fever and (cough or sore throat) syndromes, or specific reference to flu ED data obtained daily from 146 Emergency Departments across Pennsylvania*

**PENNSYLVANIA WEEKLY INFLUENZA REPORT
 INFORMATION FROM 29SEP19 THROUGH 26SEP20**

**PERCENT OF EMERGENCY DEPARTMENT VISITS WITH INFLUENZA-LIKE ILLNESS (ILI*) AS
 REASON FOR VISIT
 By Region and Week of Emergency Department Visit**

Percent of ED Visits for ILI

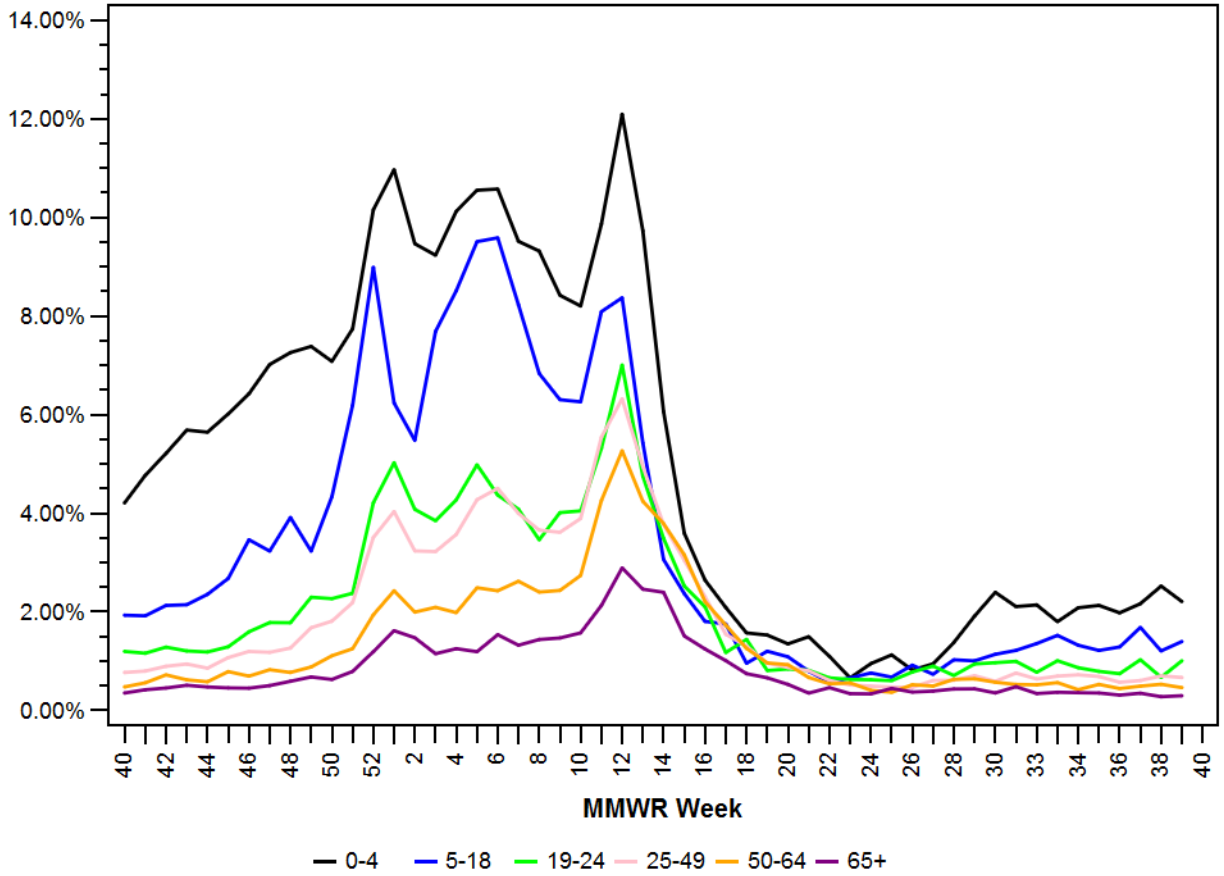


**ILI defined as presence of fever and (cough or sore throat) syndromes, or specific reference to flu ED data obtained daily from 146 Emergency Departments across Pennsylvania*

**PENNSYLVANIA WEEKLY INFLUENZA REPORT
 INFORMATION FROM 29SEP19 THROUGH 26SEP20**

**PERCENT OF EMERGENCY DEPARTMENT VISITS WITH INFLUENZA-LIKE ILLNESS (ILI*) AS
 REASON FOR VISIT
 By Age Group and Week of Emergency Department Visit**

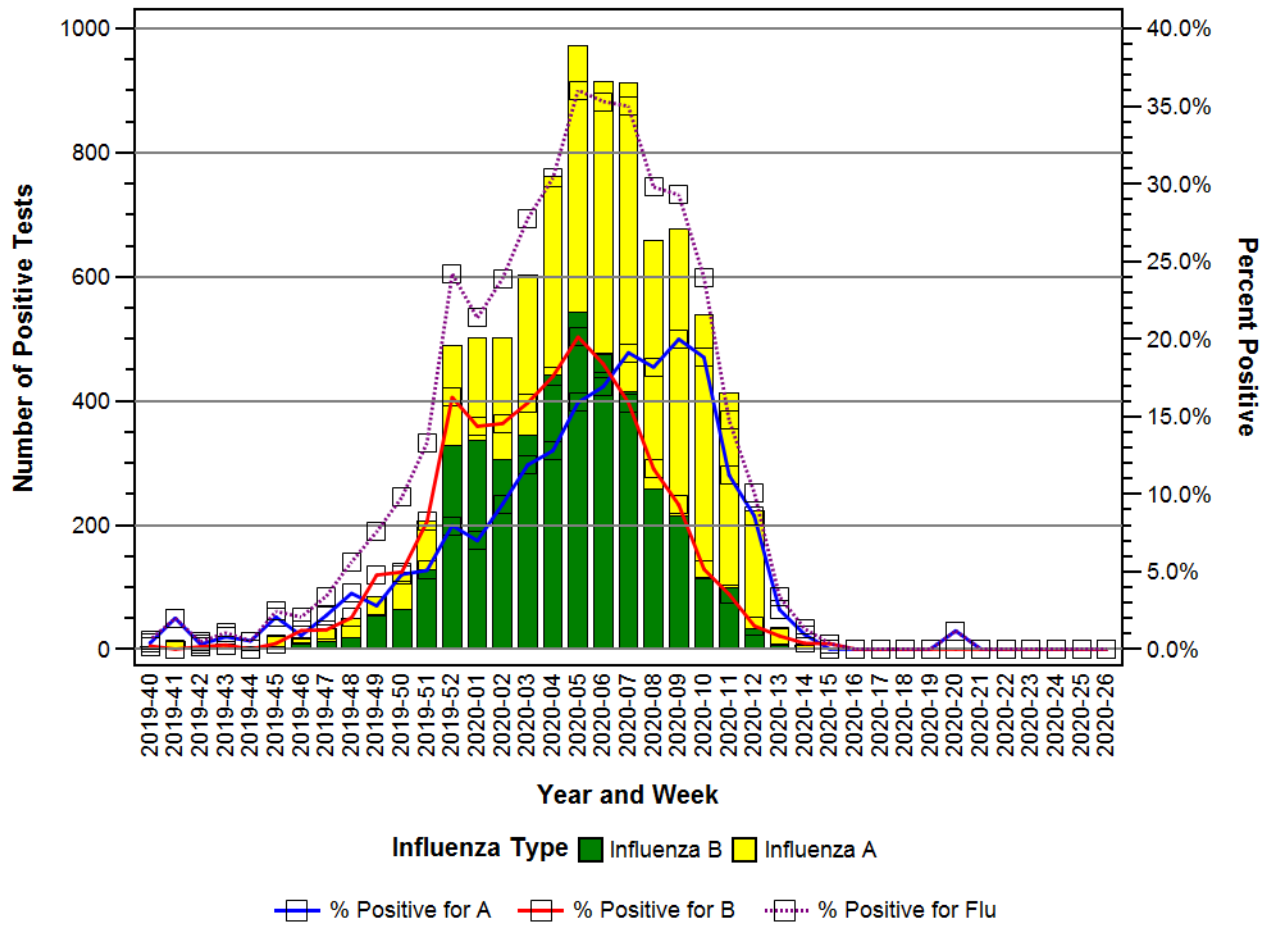
Percent of ED Visits for ILI



**ILI defined as presence of fever and (cough or sore throat) syndromes, or specific reference to flu ED data obtained daily from 146 Emergency Departments across Pennsylvania*

PENNSYLVANIA WEEKLY INFLUENZA REPORT INFORMATION FROM 29SEP19 THROUGH 26SEP20

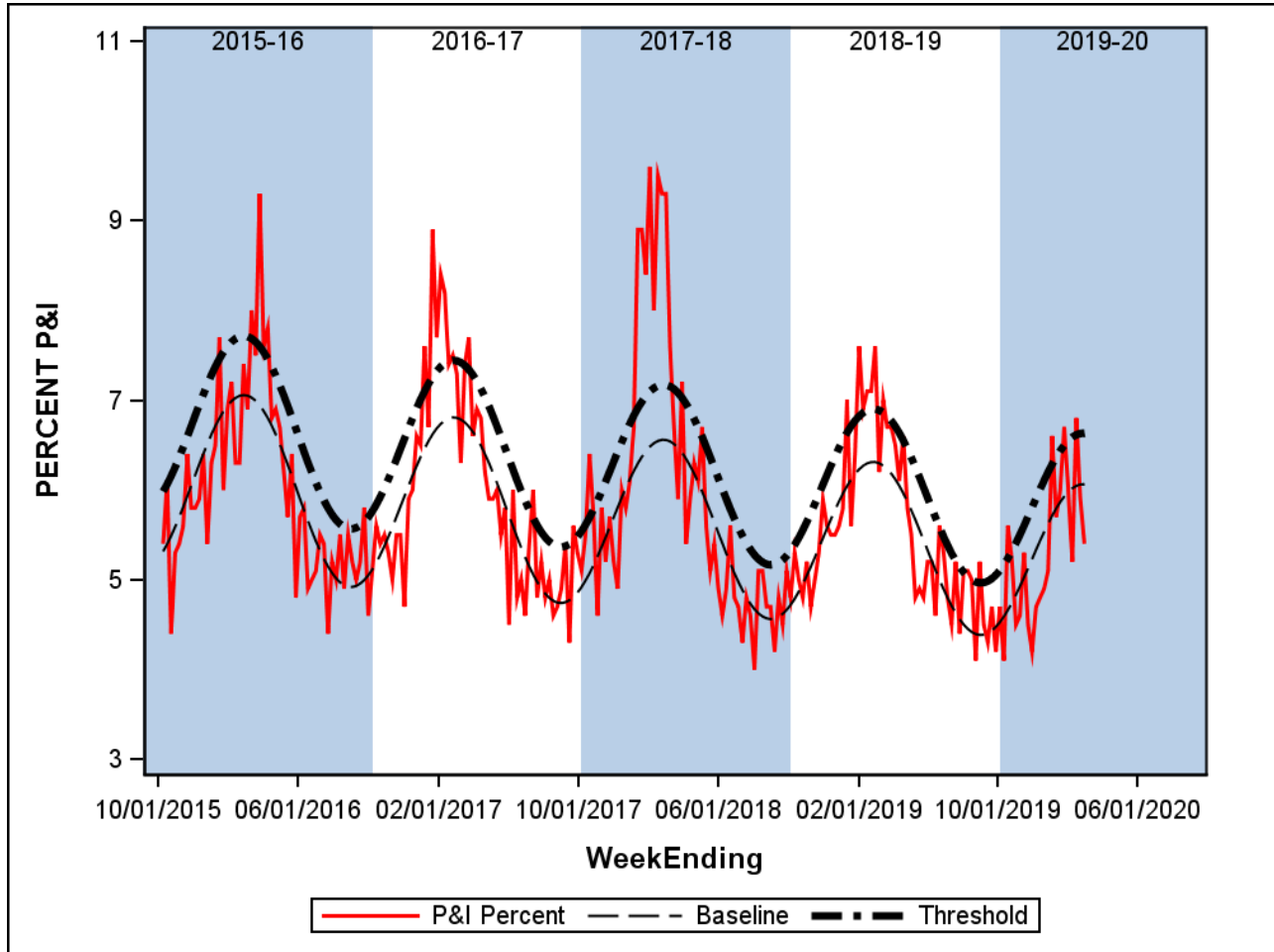
Influenza Test Results Reported to the National Respiratory and Enteric Virus Surveillance System (NREVSS) Select Pennsylvania Laboratories, Season to date



**ILI defined as presence of fever and (cough or sore throat) syndromes, or specific reference to flu ED data obtained daily from 146 Emergency Departments across Pennsylvania*

**PENNSYLVANIA WEEKLY INFLUENZA REPORT
 INFORMATION FROM 29SEP19 THROUGH 26SEP20**

**Percent of Total Deaths Attributed to Pneumonia and Influenza, Pennsylvania
 Through Week 9 (Ending 29FEB20)**



**ILI defined as presence of fever and (cough or sore throat) syndromes, or specific reference to flu ED data obtained daily from 146 Emergency Departments across Pennsylvania*