

**PENNSYLVANIA WEEKLY INFLUENZA REPORT
INFORMATION FROM 04OCT15 THROUGH 01OCT16**

SEASON-TO-DATE INFLUENZA CASE COUNTS BY COUNTY AND INFLUENZA TYPE

	Influenza Type			TOTAL
	A	B	U	
County				
	60	65	8	133
ADAMS	332	205	.	537
ALLEGHENY	2133	929	85	3147
ARMSTRONG	126	40	3	169
BEAVER	356	165	1	522
BEDFORD	34	11	1	46
BERKS	1045	615	.	1660
BLAIR	199	55	.	254
BRADFORD	60	9	.	69
BUCKS	788	565	6	1359
BUTLER	375	156	32	563
CAMBRIA	179	56	1	236
CAMERON	6	3	.	9
CARBON	79	52	.	131
CENTRE	291	255	1	547
CHESTER	645	283	6	934
CLARION	125	26	.	151
CLEARFIELD	199	148	2	349
CLINTON	13	11	.	24
COLUMBIA	110	53	.	163
CRAWFORD	277	50	.	327
CUMBERLAND	633	407	.	1040
DAUPHIN	518	183	3	704
DELAWARE	947	475	.	1422
ELK	33	16	.	49
ERIE	568	172	.	740
FAYETTE	187	79	1	267
FOREST	8	3	.	11
FRANKLIN	371	194	.	565
FULTON	55	58	.	113
GREENE	61	19	.	80
HUNTINGDON	46	56	.	102
INDIANA	332	99	1	432
JEFFERSON	85	89	.	174
JUNIATA	46	53	.	99

(Continued)

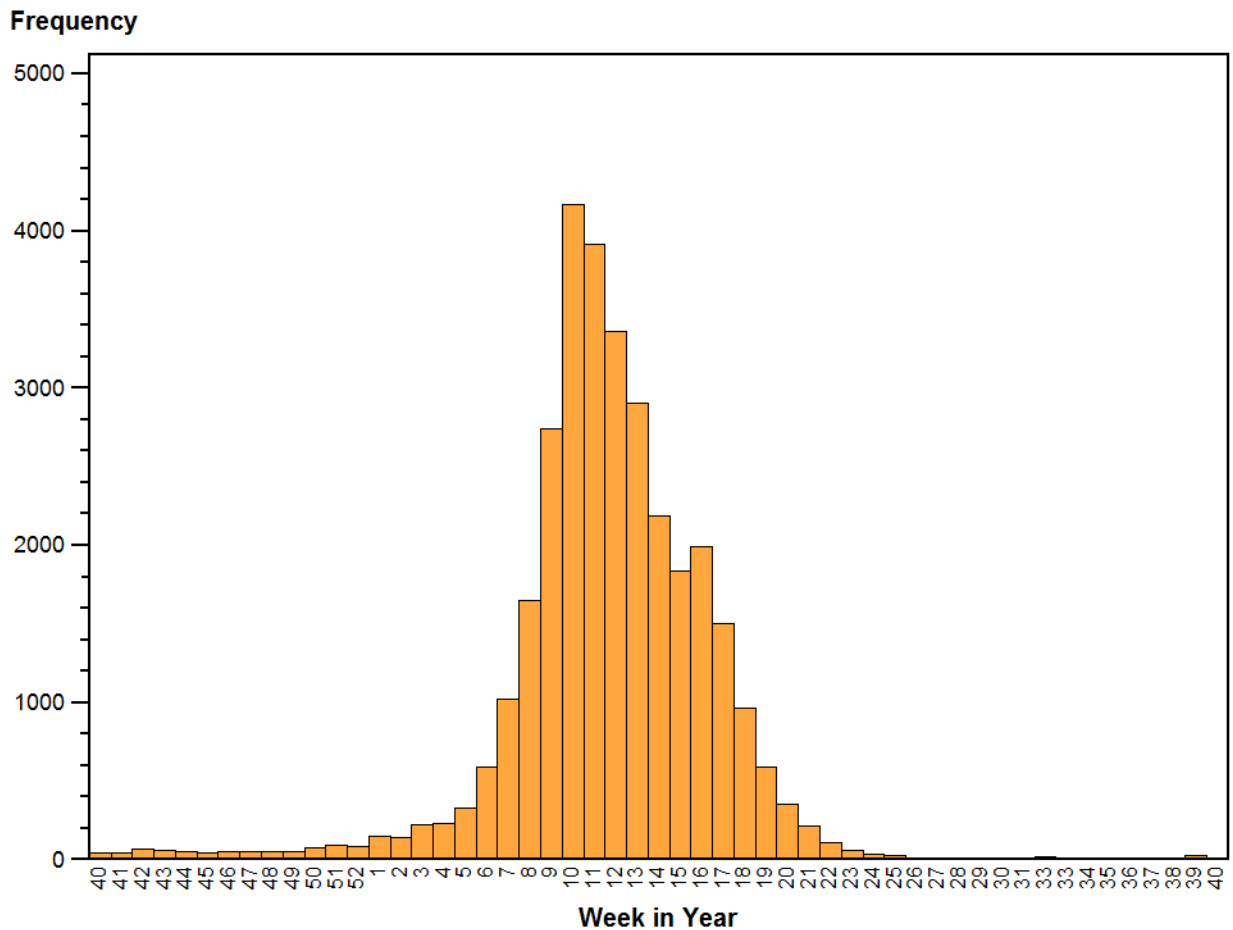
**PENNSYLVANIA WEEKLY INFLUENZA REPORT
INFORMATION FROM 04OCT15 THROUGH 01OCT16**

SEASON-TO-DATE INFLUENZA CASE COUNTS BY COUNTY AND INFLUENZA TYPE

	Influenza Type			TOTAL
	A	B	U	
County				
LACKAWANNA	315	154	.	469
LANCASTER	509	230	5	744
LAWRENCE	134	25	.	159
LEBANON	94	100	.	194
LEHIGH	1102	482	19	1603
LUZERNE	772	264	1	1037
LYCOMING	95	50	2	147
MCKEAN	93	15	.	108
MERCER	80	31	1	112
MIFFLIN	119	178	.	297
MONROE	227	76	2	305
MONTGOMERY	1120	579	9	1708
MONTOUR	49	36	.	85
NORTHAMPTON	1266	871	27	2164
NORTHUMBERLAND	186	103	1	290
PERRY	34	22	1	57
PHILADELPHIA	1178	486	.	1664
PIKE	84	18	1	103
POTTER	75	17	.	92
SCHUYLKILL	243	159	.	402
SNYDER	83	40	1	124
SOMERSET	94	50	22	166
SULLIVAN	5	1	.	6
SUSQUEHANNA	40	10	.	50
TIOGA	55	10	.	65
UNION	108	74	.	182
VENANGO	41	12	.	53
WARREN	59	17	.	76
WASHINGTON	576	227	1	804
WAYNE	149	72	1	222
WESTMORELAND	333	118	32	483
WYOMING	33	8	.	41
YORK	545	306	1	852
All	21218	10496	278	31992

PENNSYLVANIA WEEKLY INFLUENZA REPORT INFORMATION FROM 04OCT15 THROUGH 01OCT16

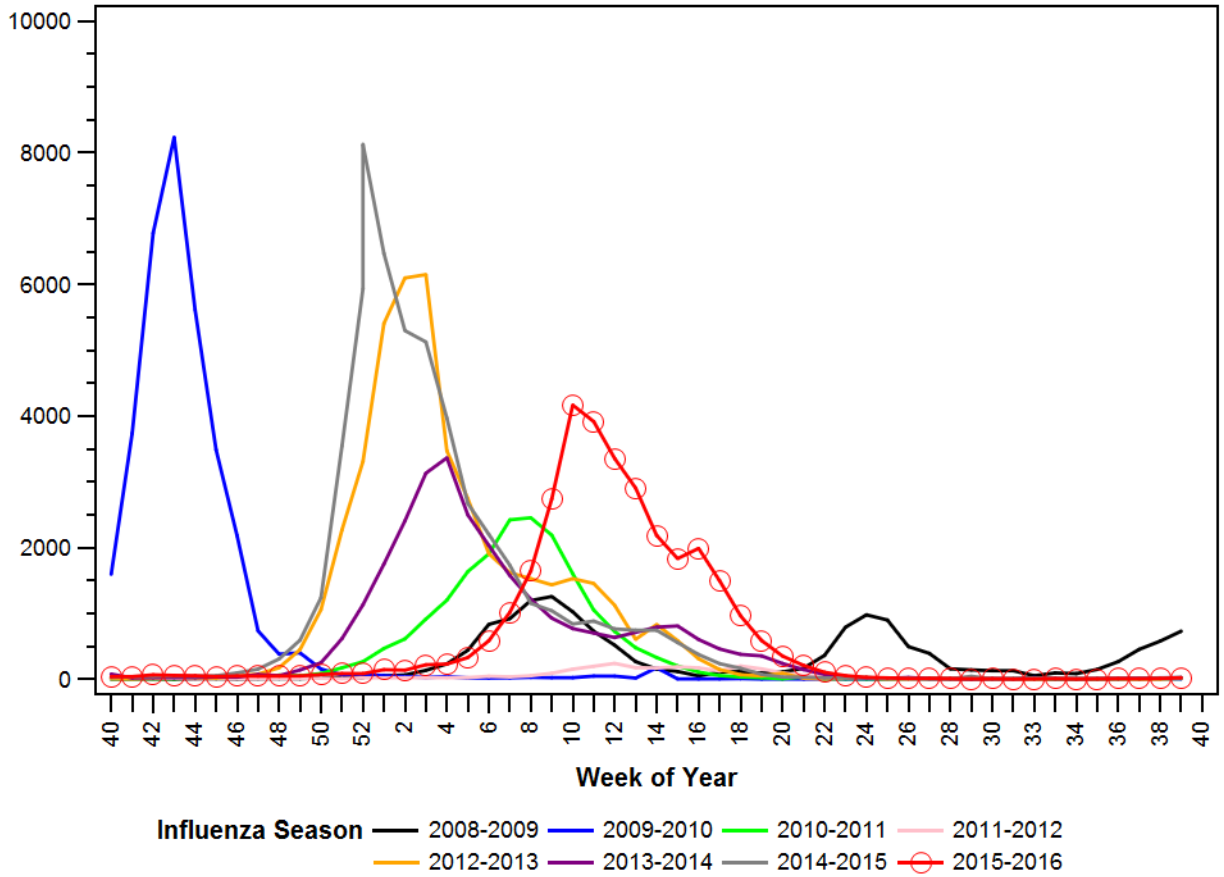
NUMBER OF PA INFLUENZA CASES (ANTIGEN, CULTURE, OR PCR POSITIVE), BY WEEK OF FIRST REPORT



PENNSYLVANIA WEEKLY INFLUENZA REPORT INFORMATION FROM 04OCT15 THROUGH 01OCT16

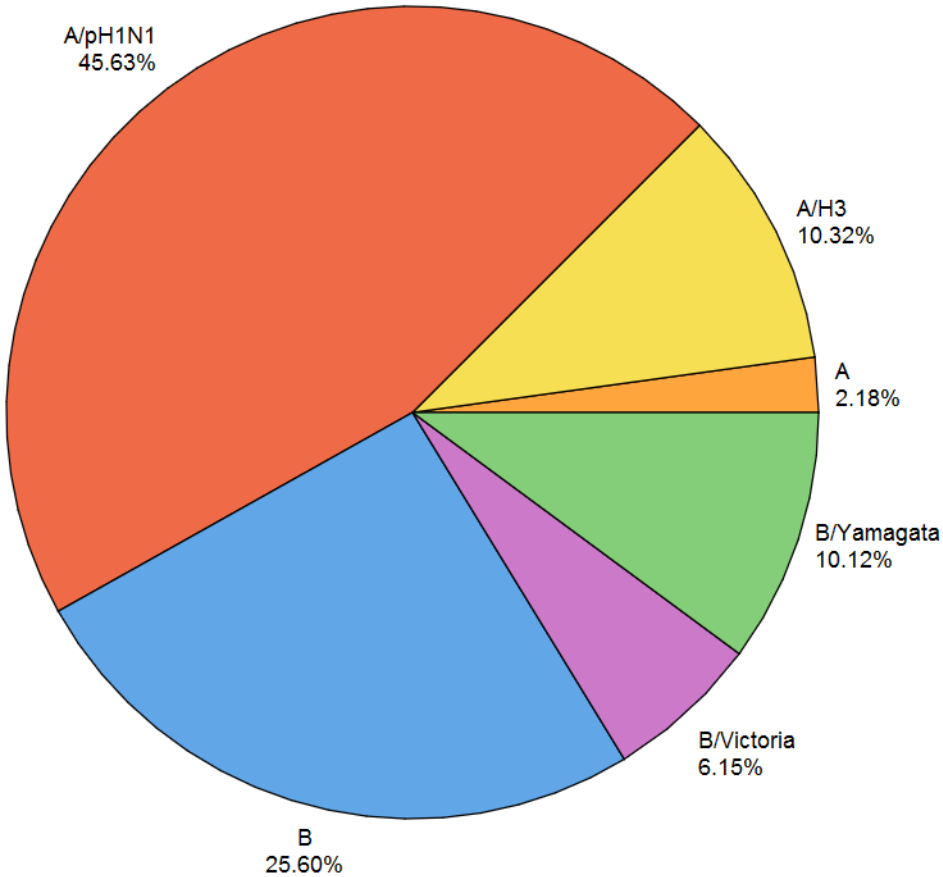
COMPARISON OF PA-NEDSS INFLUENZA CASES (ALL TYPES) IN CURRENT SEASON TO THE 6 PREVIOUS SEASONS

Number of Cases



PENNSYLVANIA WEEKLY INFLUENZA REPORT INFORMATION FROM 04OCT15 THROUGH 01OCT16

SEASON-TO-DATE INFLUENZA SUB-TYPING RESULTS FROM STATE PUBLIC HEALTH LAB



**PENNSYLVANIA WEEKLY INFLUENZA REPORT
INFORMATION FROM 04OCT15 THROUGH 01OCT16**

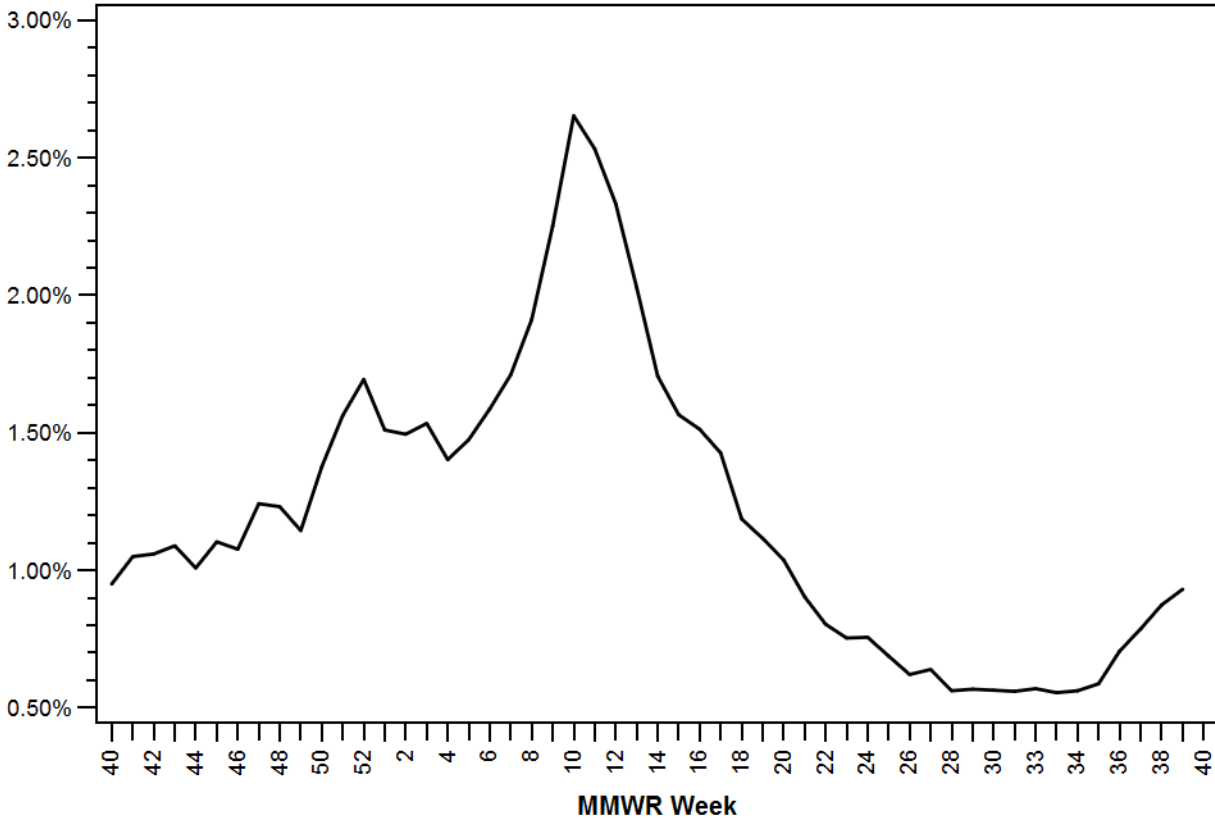
SEASON-TO-DATE INFLUENZA-ASSOCIATED DEATHS BY AGE

	Influenza-associated deaths
AGE	
25-49	7
50-64	20
65+	37
All	64

**PENNSYLVANIA WEEKLY INFLUENZA REPORT
 INFORMATION FROM 04OCT15 THROUGH 01OCT16**

**PERCENT OF EMERGENCY DEPARTMENT VISITS WITH INFLUENZA-LIKE ILLNESS (ILI*) AS
 REASON FOR VISIT
 Statewide, By Week of Emergency Department Visit**

Percent of ED Visits for ILI



Influenza Season — 2015-2016

**ILI defined as presence of fever and (cough or sore throat) syndromes, or specific reference to flu ED data obtained daily from 146 Emergency Departments Across Pennsylvania*