

2015/2016

**Cancer Annual
Report**

**Pennsylvania Cancer Control Prevention
and Research Advisory Board
December 1, 2016**



December 1, 2016

Message from the Cancer Advisory Board Chairman:

The Pennsylvania Cancer Control, Prevention and Research Advisory Board (CAB) presents its 2015-2016 Cancer Annual Report to the governor and General Assembly on the statewide initiatives implemented to improve the lives of Pennsylvanians at risk of or surviving cancer.

CAB is the legislatively mandated board established to advise the Pennsylvania secretary of health with respect to cancer control, prevention and research in Pennsylvania as required by Act 33 of 2006. CAB is responsible for approving grants and contracts, and overseeing the implementation of cancer-related prevention, education, training and research through the Pennsylvania Department of Health.

Our mission continues to be increasing access for population-based screening, improving health outcomes for cancer survivors, and identifying opportunities for policy, system and environmental approaches as guided by the 2013-2018 Pennsylvania Cancer Control Plan. This plan is crucial in influencing and guiding Pennsylvania's future cancer prevention and control strategies while we navigate through an ever-changing health care environment.

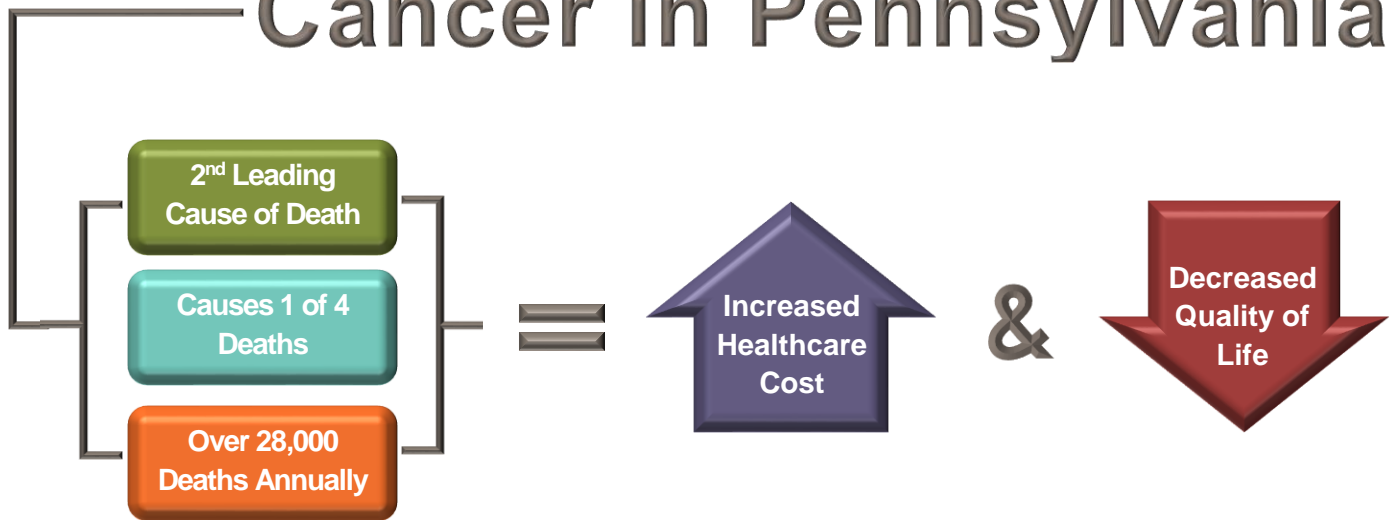
I want to thank you for your ongoing support and continued investment. Only by working together can we optimize the state's limited resources and ensure that individuals receive the services they need and deserve. The CAB appreciates your support, as well as that of the administration and the Department of Health, in helping us in our ongoing efforts to reduce the burden of cancer in Pennsylvania.

Sincerely,

A handwritten signature in black ink that reads "Joel Noumoff MD".

Joel Noumoff, MD
Chairman, Cancer Advisory Board

Cancer in Pennsylvania

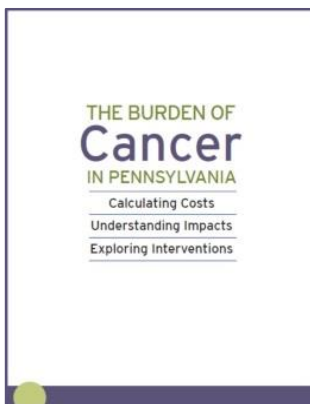


Guiding Documents



2013 – 2018 Pennsylvania Cancer Control Plan:

- recommends statewide comprehensive cancer control initiatives;
- establishes goals for the Pennsylvania Cancer Control Program; and
- was developed by the Stakeholder Leadership Team (SLT) cancer coalition by the direction of the Pennsylvania Cancer Control, Prevention and Research Advisory Board (CAB).



The Burden of Cancer in Pennsylvania Report:

- contains data to guide Comprehensive Cancer Prevention and Control program decision making and gauging project success;
- provides cancer stakeholders with data for guiding program development and decision-making; and
- collected through the Pennsylvania Cancer Registry and made available to the public through Division of Health Informatics' EDDIE system.

Breast and Cervical Cancer Activities

The HealthyWoman Program – See page 7 for funding (state and federal).

- Provided breast and cervical cancer screening and diagnostic services to **6,464 eligible women**, ages 40 to 64; detected **38 women** with invasive cancers and referred to treatment
- Supported a hotline that received **863 calls** with **625 referrals** to a screening site for an appointment
- **Outreached to 19,151 women** providing education on breast and cervical cancer services available
- Promoted workforce development efforts with Community Health Workers. Approximately **1,525 individuals** viewed and participated in webinars related to CHW workforce development

Consumer Health Coalition, Pittsburgh, Pa. \$10,000 (federal)

- **Provided 97 women** with individualized enrollment
- Delivered six group education presentations on breast and cervical cancer awareness and prevention to community organizations reaching **144 individuals**
- Conducted seven professional development trainings attended by **118 individuals**
- **Conducted 34 provider briefings** at health fairs
- Included **1,286 “Screening Guidelines” flyers** in the “newly insured” information packets given to all clients

Pennsylvania Breast Cancer Coalition \$90,000 (state)

- Held eight "67 Women, 67 Counties: Facing Breast Cancer in Pennsylvania" traveling photo exhibits within high breast cancer burden areas in Pa. reaching **15,695 participants**

Colorectal Cancer Activities

Pittsburgh Business Group on Health, Pittsburgh, Pa. \$10,000 (federal)

- Conducted an employer workplace wellness event “80% Screened for Colorectal Cancer by 2018” at Development Dimensions International attended by over 100 employees

Pennsylvania Department of Health and American Cancer Society

- One of eleven states selected to participate in the Colorectal Cancer 80% by 2018 Forum in Atlanta, GA on Sept. 16-17, 2015.
- Held a statewide Colorectal Cancer Summit with 169 attendees representing hospitals, physicians, health plans, and employers

HPV Associated Cancer Activities

Pennsylvania Chapter of the American Academy of Pediatrics \$48,500 (federal)

- Delivered technical assistance to 15 pediatric practices to institute quality improvement initiatives for increasing HPV vaccination rates; delivered at least one dose of the HPV vaccine to **12,000 patients**; increased HPV vaccine rates 2 percent in two months

“HPV – You are the Key to Cancer Prevention” Webinar

- Conducted a nationwide webinar to educate health professionals on the importance of HPV vaccination Pa. Department of Health partnered with a speaker/content expert from the Centers for Disease Control
- **Partnered with the Centers for Disease Control and Prevention** for content expertise and keynote speaker
- **Attended by 367 participants**, including attendees from 26 other states

Lung Cancer Activities

American Lung Association of Pennsylvania \$74,432 (federal)

- Increased knowledge regarding lung cancer and lung disease for 223 attendees at the Pittsburgh Lung Force Expo
- Established Quitline protocols and smoking cessation resources for cancer patients through the Lehigh Valley Health Network's oncology practices
- Conducted a project with Suburban Community Hospital, Norristown, Pa. to integrate lung cancer screening into a smoking cessation program; **19 candidates identified and 3 screened for Lung Cancer**

"Cancer in PA: Radon Awareness" Webinar

- Partnered with Pa. Department of Environmental Protection to deliver education for increasing radon awareness among physicians and other health professionals.
- Developed webinar CMEs through the Pennsylvania Chapter of the American Association of Pediatrics
- Attended by **201 attendees** including attendees from 23 other states

Screening Activities

Northeast Regional Cancer Institute \$10,000 (federal)

- Provided patient navigation services to reduce barriers to breast, colorectal and cervical cancer screenings for low-income patients in Northeast Pennsylvania; **2,025 initial contacts** were made with **90 individuals** referred for cancer screening services

Survivorship and Palliative Care Activities

Palliative Care \$10,000 (federal)

- Conducted a palliative care round table for **40 participants** in Blairsville, Pa. to identify successes, needs and gaps with palliative care
- Established the Pa. Palliative Care Task Force of 50 palliative care experts/champions who drafted the Pennsylvania Plan for Oncology Palliative Care for release in 2017

Survivorship \$10,000 (federal)

- Supported a **LIVESTRONG cancer survivorship program** conducted through the Harrisburg Area YMCA Association for **23 participants**

Cancer Education Activities

LiveHealthyPA.com website

- Launched LiveHealthyPA.com website to support communities, schools, organizations and health teams to learn what's happening to keep Pennsylvanians healthy

Cancer in PA: Trends & Insights webinars (2)

- Educated 90 attendees on melanoma and prostate Cancers
- Educated 90 attendees on thyroid and urinary bladder cancers, and EDDIE data system

Policy, Systems, and Environmental Change (PSE) videos

- Educated **48 individuals** on PSE and its ability to affect the health of large groups of people

Special Cancer Institute Initiatives

Pennsylvania State University \$150,000 (state)

- Educated **19 physician practices and four school districts** on cancer prevention/HPV vaccine, in partnership with the Crawford Health Improvement Council
- Conducted the “6th Annual Cancer Education Summit” with **110 attendees** in Harrisburg
- Conducted six community health worker-facilitated colon cancer education classes to **145 attendees** in Dauphin County
- Disseminated cancer risk reduction toolkits, educational and small media resources to **270 participants**

Northeast Regional Cancer Institute \$150,000 (state)

- Conducted 30 cancer awareness events for approximately **1,800 participants**
- Facilitated the completion of **667 breast, cervical and/or colon cancer screenings** for low income residents in Northeast Pa.
- Conducted 19 healthcare professional education programs with **1232 attendees**
- Provided one-on-one telephone education to **840 individuals** on the importance of breast, cervical, and/or colon cancer screening(s)

University of Pennsylvania \$150,000 (state)

- Conducted seven patient education conferences and two breast cancer survivorship conferences for more than **2200 participants**
- Provided prostate cancer education and screening in a high-risk, underserved area with **1,500 participants**
- Conducted skin cancer screenings for **165 participants**
- Provided navigation assistance for patients leading to a completion of **168 colonoscopies**

University of Pittsburgh Cancer Institute \$150,000 (state)

- Conducted 94 community education and events serving **1929 individuals**, with **126 getting screened**
- Conducted 16 Community Prevention and Risk Reduction Events with **3,420 participants**
- **Engaged 10,917 students** through the “Healthy Choices for Students” program
- **Engaged 5860 participants** through the “Healthy Choices for Students” summer program

General Government Operations (GGO) Funds

Gannett Fleming \$9,999 (state)

- Served as a consultant to support the Prostate Cancer Task Force to provide meeting facilitation, project planning, and administrative support

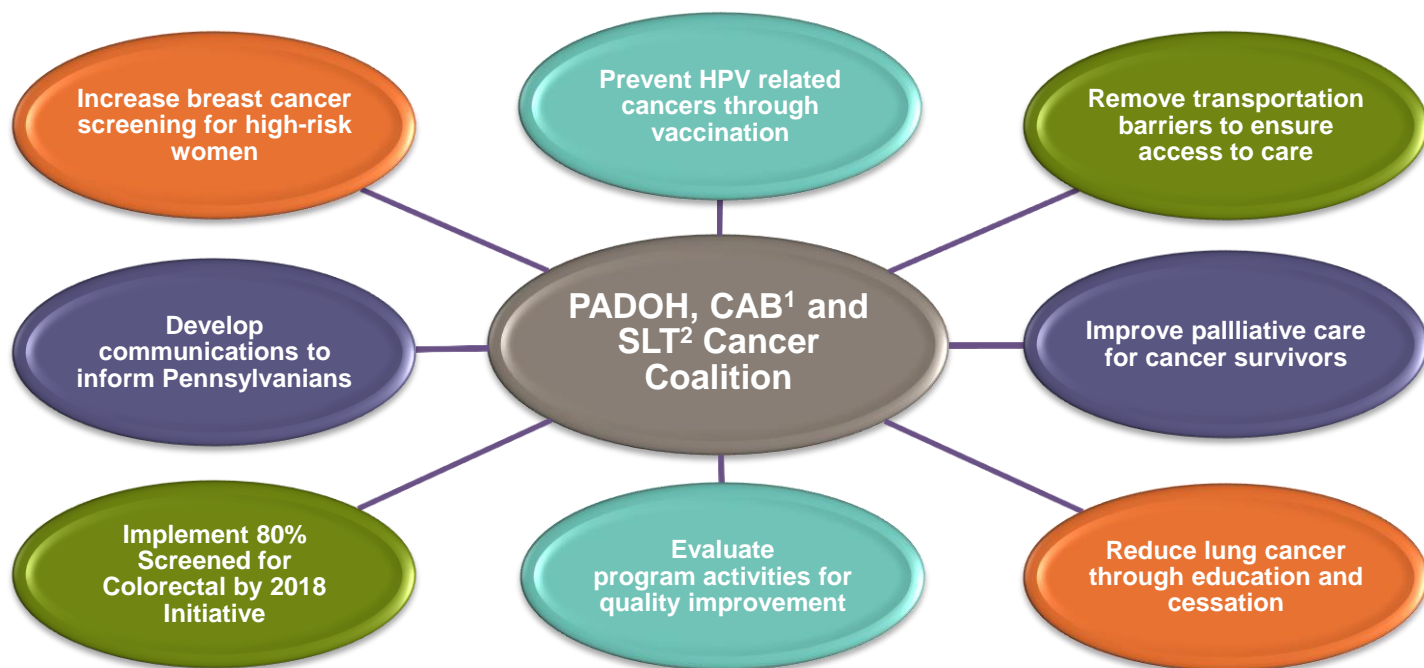
Penn State Hershey PRO Wellness Center \$2,582 (state)

- Served as an advisory board for submissions to the Healthy Living Practices database on LiveHealthyPA.com

University of Pittsburgh \$51,998 (state)

- Provided public health evaluation services for the Comprehensive Cancer Control Program

Comprehensive Cancer Control Strategies



1. Pennsylvania Cancer Control, Prevention and Research Advisory Board 2. Stakeholder Leadership Team cancer coalition

State Appropriated Funds	
Special cancer institute initiatives	\$600,000
Cancer survivorship grant	\$90,000
Breast and Cervical Cancer Screenings and Diagnostic Services (age 40-49)	\$2,563,000
Operating Expenses and Contracts	\$285,000
Federal Funds	
Centers for Disease Control and Prevention, Cancer Prevention and Control Program, DP12-1205	
• Component 1, Management, Leadership, Coordination	\$42,014
• Component 2, Comprehensive Cancer Control	\$565,605
• Component 3, National Breast and Cervical Early Detection Program	\$2,547,613
• Component 4, National Program of Cancer Registries	\$925,990