

## COVID-19 MONTHLY TRACKING REPORT FOR AUGUST 2023

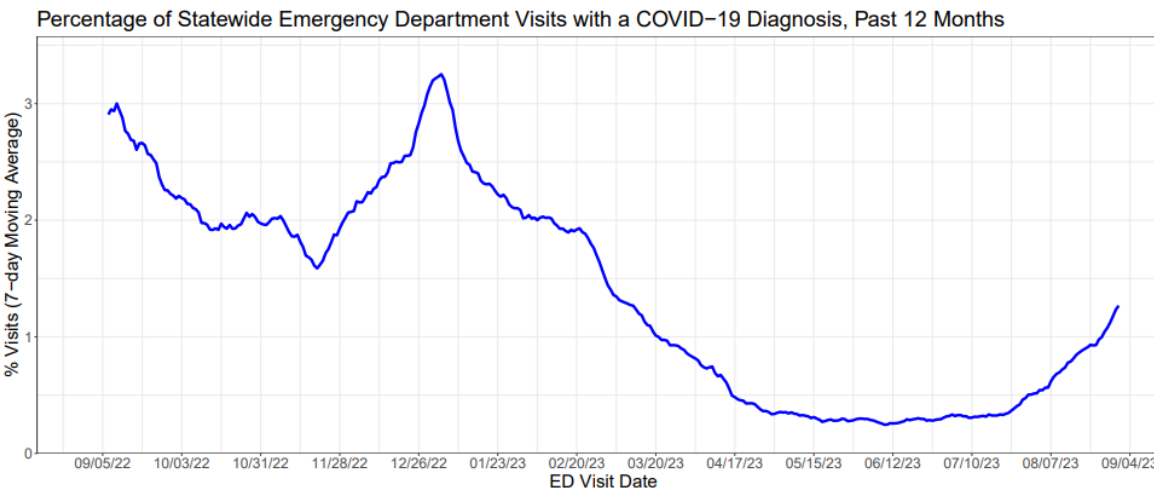
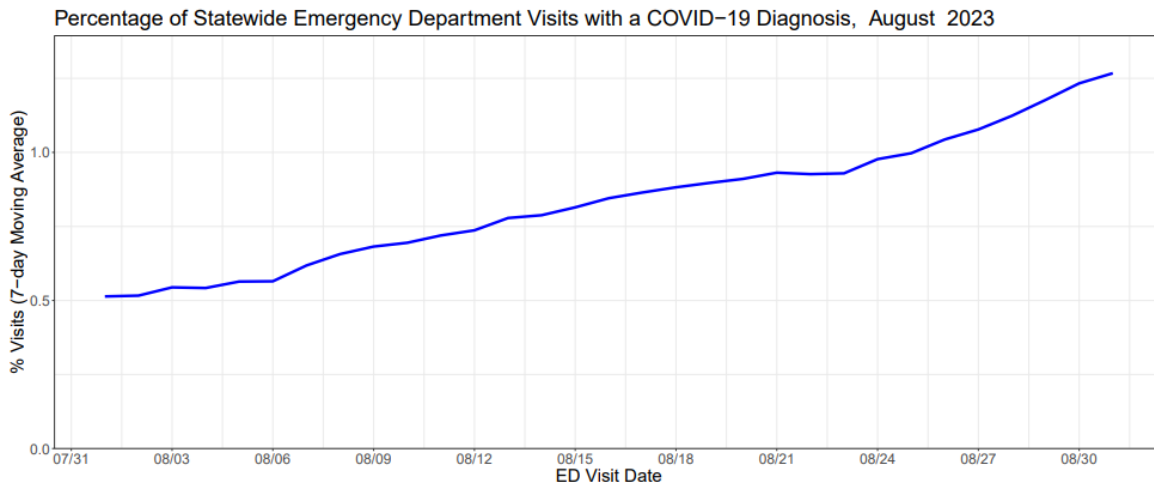
The Pennsylvania Department of Health (DOH) continues to monitor trends in clinically significant COVID-19 disease in Pennsylvania. This report includes recent trends in PA:

- Emergency departments visit with a diagnosis of COVID-19
- Hospitalizations for COVID-19
- Deaths attributed to COVID-19
- COVID-19 variants
- Wastewater surveillance

### Emergency Department Visit Data:

DOH collects near-real-time Emergency Department (ED) visit data from all PA hospitals. Trends are expressed as the percent of all ED visits where the person received a COVID-19 diagnosis.

The graphs below show the percent of ED visits that resulted in a diagnosis of COVID-19 in the previous month (August 2023) and over the past 12 months (September 2022 through August 2023).

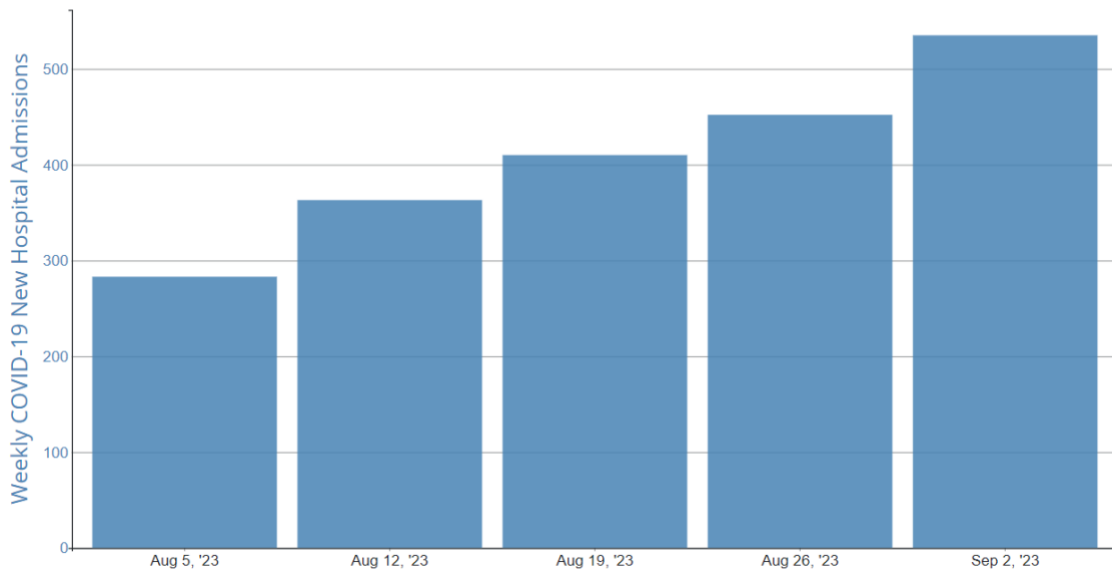


## COVID-19 Hospitalization Data:

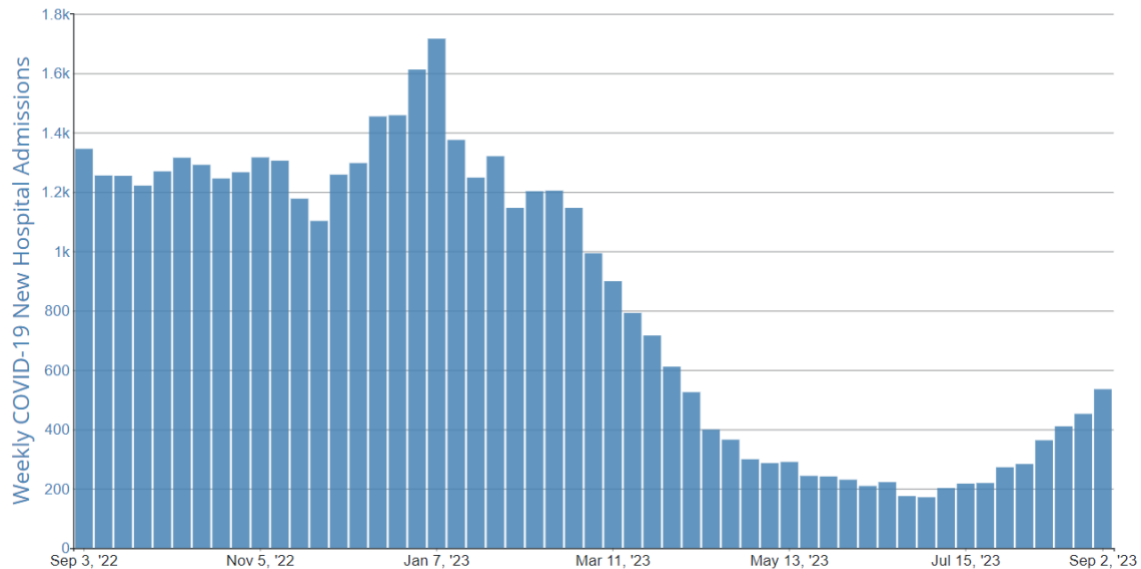
The U.S. Department of Health and Human Services requires hospitals to directly report COVID-19 admissions to them. The CDC Data Tracker website displays hospitalization and ICU census data, mapped to the county level ([https://covid.cdc.gov/covid-data-tracker/#cases\\_new-admissions-county](https://covid.cdc.gov/covid-data-tracker/#cases_new-admissions-county)). In addition to the map, trends in PA hospital admissions for COVID-19 can be found at <https://covid.cdc.gov/covid-data-tracker/#new-hospital-admissions>. Select Pennsylvania as the jurisdiction. The charts are updated weekly.

The graphs below show weekly PA COVID-19 hospitalizations for the previous month (August 2023), and over the last 12 months (September 2022 through August 2023), respectively.

COVID-19 New Hospital Admissions, by Week, in Pennsylvania, Reported to CDC



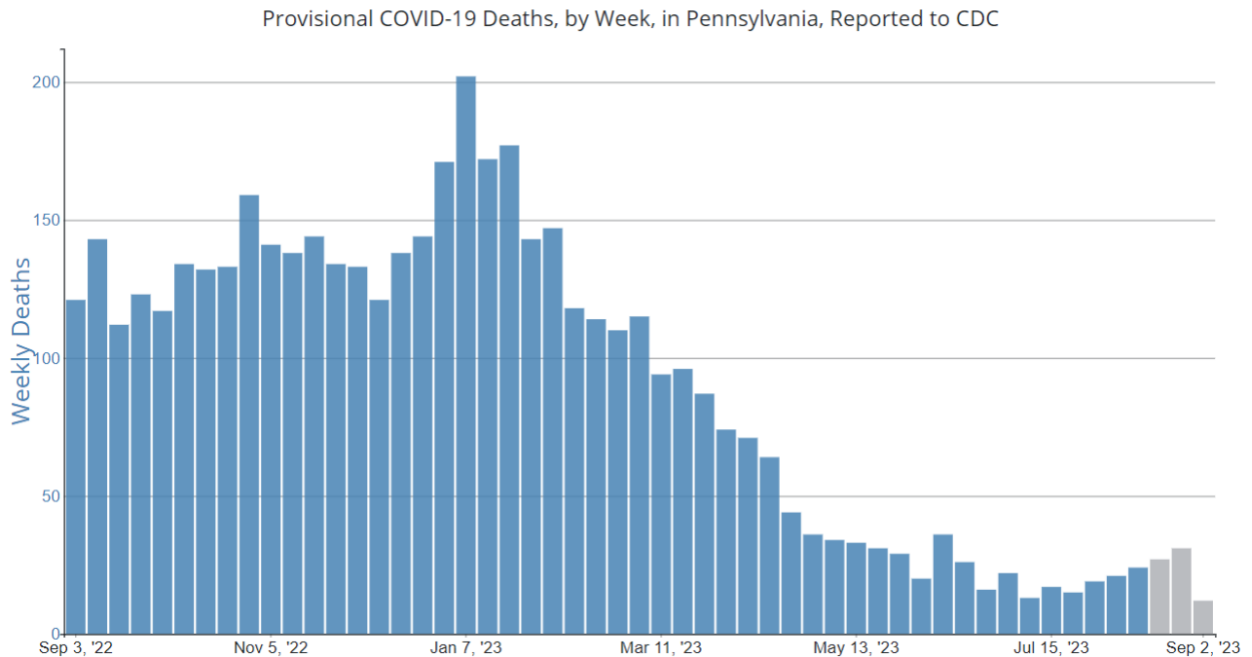
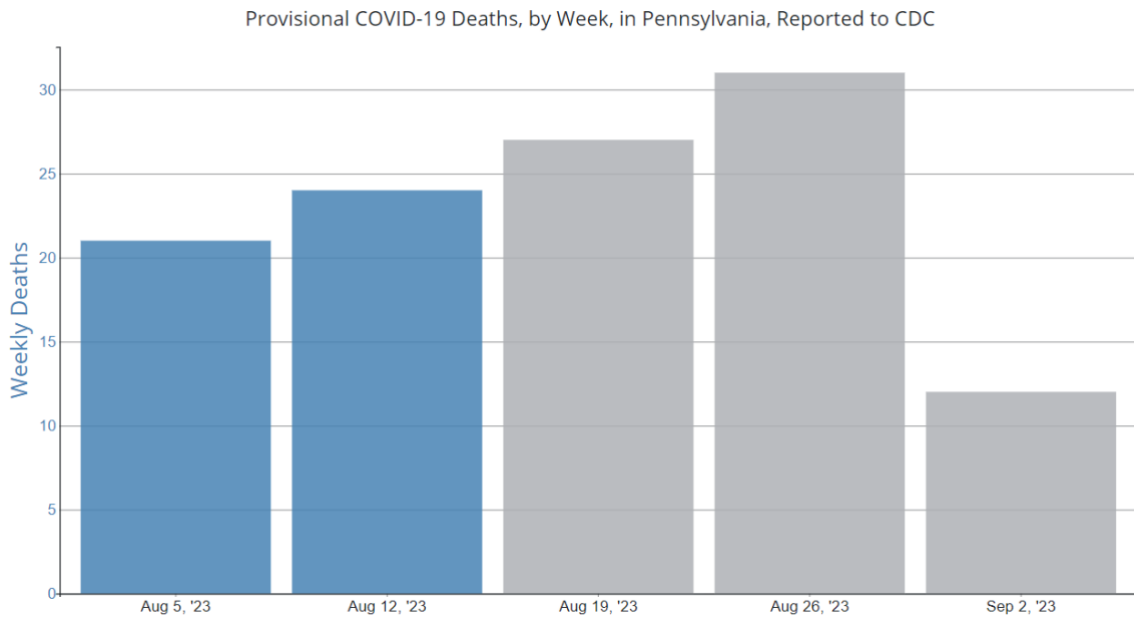
COVID-19 New Hospital Admissions, by Week, in Pennsylvania, Reported to CDC



### Trends in Provisional COVID-19 Deaths:

The National Center for Health Statistics receives all death certificates in the country and analyzes them to attribute the cause of death. Trends in PA COVID-related deaths can be found at [CDC COVID Data Tracker: Trends by Geographic Area](#). Death data by sex, age, and race/ethnicity can also be viewed by U.S. region.

The graphs below show weekly PA COVID-19 related deaths for the previous month (August 2023), and over the last 12 months (September 2022 through August 2023), respectively.



**Note from CDC:**

- Data during recent periods are incomplete because of the lag in time between when a death occurs and when a death certificate is completed, submitted to NCHS, and processed for reporting. This delay can range from 1 to 8 weeks or more, depending on the jurisdiction. The most recent 3 weeks of mortality counts are shaded grey and mortality rates shown as dotted lines because NVSS reporting is <95% during this period.

**COVID-19 Variant Information:**

CDC continues to post updated information on trends in COVID variants every two weeks on their Variant Proportions Nowcast page (<https://covid.cdc.gov/covid-data-tracker/#variant-proportions>). Analyses are available nationwide and at a regional level. Pennsylvania is in Region 3.

**Wastewater Data:**

The PA Wastewater Surveillance System ([PaWSS](#)) measures SARS-CoV2, the virus that causes COVID-19, in wastewater. The [PaWSS dashboard](#) is updated weekly on Monday mornings and displays trends in SARS-CoV-2 concentrations measured in wastewater samples collected at sites across PA.