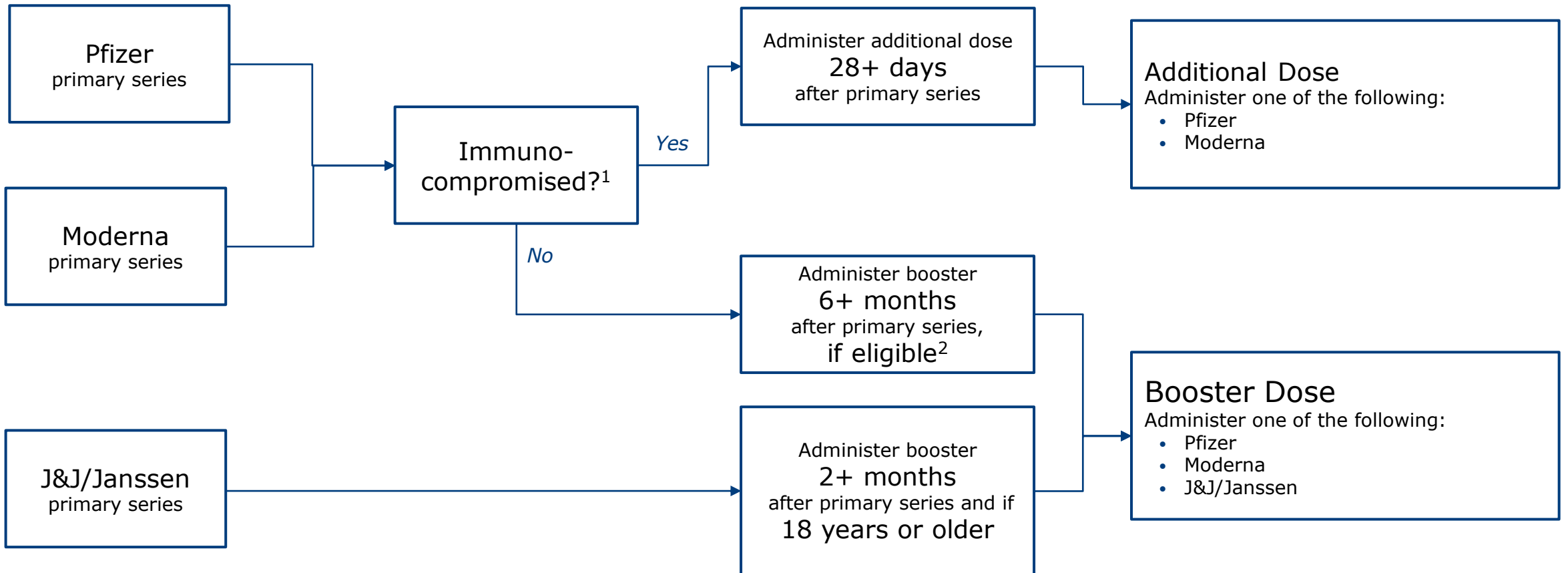


# Booster Guidance

Use this map to understand the current guidelines.



1. Immunocompromised as defined by CDC: <https://www.cdc.gov/coronavirus/2019-ncov/need-extra-precautions/people-with-medical-conditions.html>  
2. Pfizer/Moderna eligibility defined as 65+, 18+ in long term care setting, 50-64 with underlying medical conditions, the following may get a booster based on individual risks/benefits: 18-49 with underlying medical conditions, 18-64 with frequent institutional or occupational exposure to SARS-CoV-2